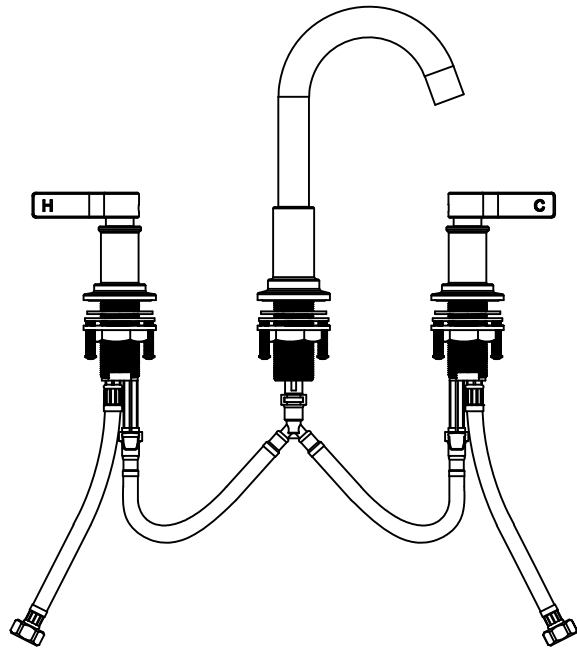


BATHROOM FAUCET INSTALLATION MANUAL



If you encounter any problems, feel free to drop us an email at
Help@ZRSupport.com

CONTACT US

Thank you for purchasing our products!

We're delighted to enhance your living space with our offerings. If you encounter any issues or have questions during installation or usage, don't hesitate to reach out. Our dedicated support team is available 24/7 to assist you and ensure your complete satisfaction.

✉ Email: Help@ZRSupport.com

☎ Phone: 1 - 888 - 204 - 3326

📺 Online Support: ZRSupport

To facilitate the installation of your faucet:

Please read through all the instructions before starting.

Read all warnings, cautions, and maintenance information.

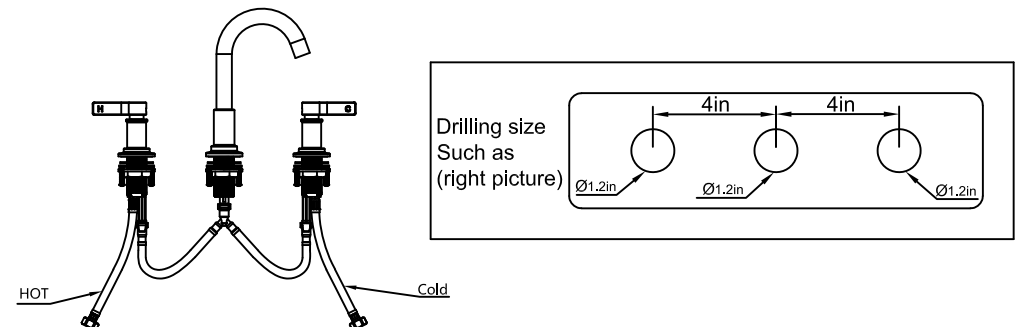
All information is based on the latest product information released.

Our company reserves the right to change the characteristics, packaging or types of products.

Precautions:

1. Thoroughly flush the water supply pipeline to remove debris.
2. Observe all local plumbing and building codes.
3. As far as possible, install the faucet before installing the basin.
4. Cut off the main water supply before installation.
5. Check the water supply pipeline for damage. If necessary, replace it.

Installation size and pipeline connection diagram



parameter

EN

This information is for installation masters or professionals to use, please Instructions to users.

Conditions of Use:

Can not be used together with non-pressure heaters, used in indoor public health environment

Environment or other same environment

Water supply pressure: 0.05MPa~0.5Ma Recommended water pressure: 0.1~0.5Ma

Working pressure: Maximum 1.0Mpa

Test pressure: 1.6Mpa

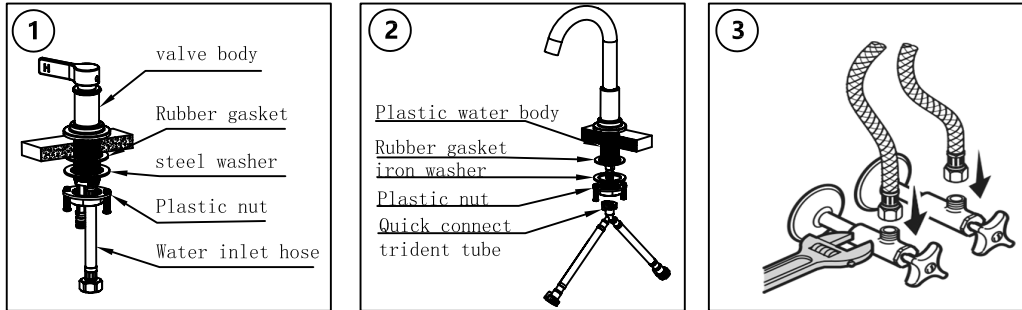
Hot water temperature: up to 90°C

Suggested temperature: 60°C

Environment temperature: 5°C~45°C

If the water inlet pressure exceeds 0.5Mpa, a pressure reducing valve must be installed to avoid.

The pressure difference between the hot and cold water pipes is large.



Install the valve body assembly (Fig. 1):

1. Remove the plastic nut and washer, insert the plastic valve body tap into the sink hole, install washer and nut from the bottom; tighten the nut and screw.

Install the water outlet nozzle assembly (Figure 2):

1. Remove the copper nut and washer from the water outlet pipe.
2. As shown in the figure, insert the dental tube into the hole in advance from the upper part of the basin to make the base stick tightly to the surface of the basin and be careful not to lose the base O-ring.
3. Install the rubber washer and copper nut onto the threaded tube, lock the copper nut, and tighten the screw.
4. Place the small washer into the quick connect connector, and then install the connector onto the dental tube port.
5. Connect the hose according to the hose connection diagram.

Install the hot and cold angle valve connector (Figure 3):

1. Connect the hose to the water supply line and pay attention to the direction of the hot and cold water



Maintenance: If necessary, please check and clean all accessories or Replace, please close the water inlet pipe first when replacing.



Function: Check whether there is water leakage at the connection position, the parts are complete, Closed normally.



When installing the valve body, please make sure not to miss the rubber ring to ensure. The sealing rubber ring is in the correct position, and then tighten the nut.

maintainance

Note:

Be sure to close the water pipe and open the handle before removing the faucet.

Relieve the pressure and make sure that the water valve switch is completely closed.

Keep the surface of the product clean and bright, please clean the faucet regularly and follow.

The following steps:

1. Use rinsing water and a soft cloth to clean the surface of the faucet to make it back to its best state.

2. Use only the following cleaning agents to clean oil stains:

√Soft liquid cleaner

√Colorless glass cleaner, easily soluble non-corrosive powder cleaner

Non-corrosive cleaning wax

√Do not use cleaners, gauze, or handkerchiefs that can hurt

×Don't use detergents, ammonia, bleach, etc.

Acid, vinegar, alcohol, solvent, etc.

3. After cleaning, rinse the cleaner on the surface of the faucet with water in time, and use Wipe dry with cotton cloth.

4. Remove the bubbler regularly and rinse with clean water to avoid clogging.