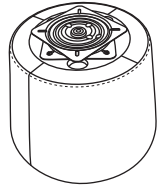
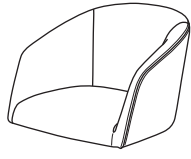


Install Instruction

Part List:

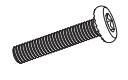


A x 1
Chair Base



B x 1
Chair Body

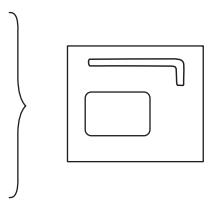
Hardware List:



H1 x 4
Nylok Bolt
(M6x30mm)

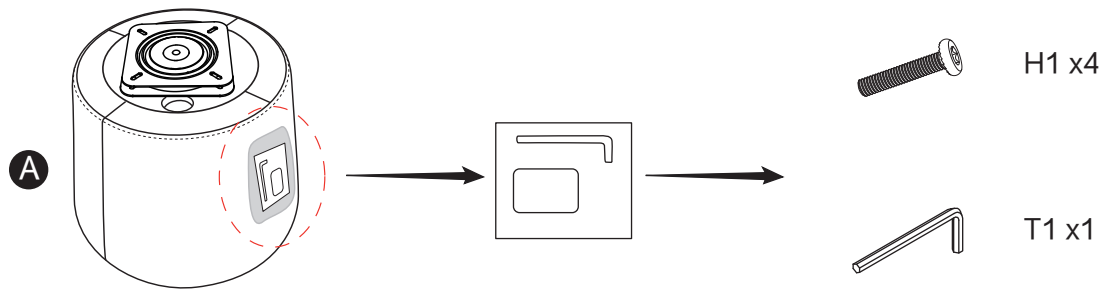


T1 x 1
Allen Key

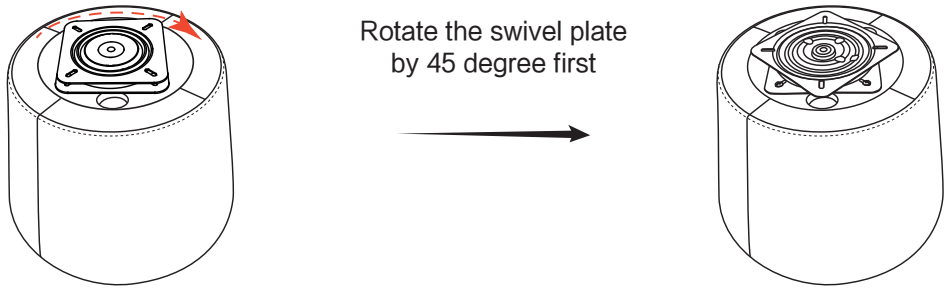


Assembly Instruction:

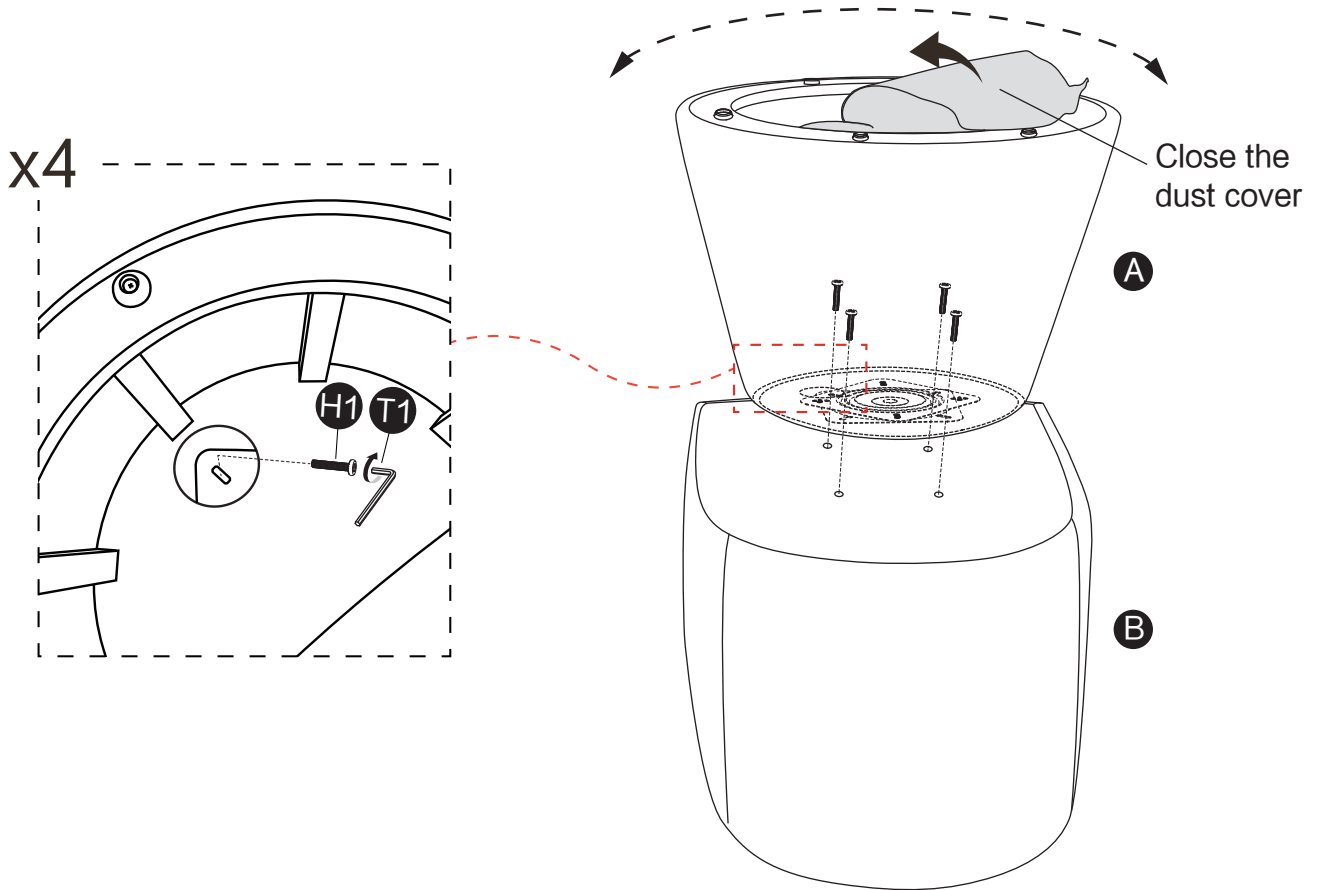
Step 1: Locate the hardware pack attached to the Chair Base (A). Make sure all parts and hardware are present before assembly. Assemble on a soft and smooth surface to prevent damage to product.



Step 2: Rotate the swivel plate by 45 degree.



Step 3: Attach the Chair Base (B) to Chair Body (A), using Bolts (H1) and Allen Wrench (T1).
Note: Loosely attach the bolts one by one and keep them loose. Do not fully tighten. After loosely attach the first bolt, rotate the base to attach the next one. After all 4 bolts are attached, use Allen Wrench (T1) to tighten.



Step 4: Assembly complete. Take a spin and enjoy.

