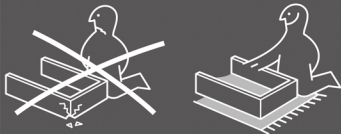
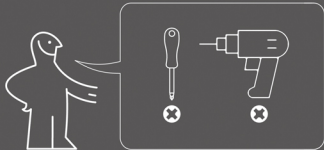


PRODUCT INSTALLATION INSTRUCTIONS



Before installing the product,
please read the product installation instructions carefully





				
X128	X128	X32	X32	X66
				
X8	X8	X14	X1	X16
				
X1	X13	X4		

Note: accessories have surplus is normal phenomenon

How to use round fasteners and silver connectors



Suggestion: please read the installation drawing carefully before installing the product

Part 1: storage cabinet drawers

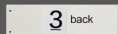
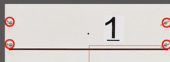


X6

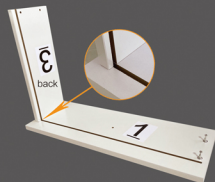
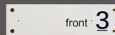


X4

Step. 01



Step. 02

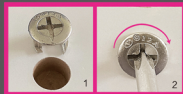


Step. 03

X2



X1



Step. 04

X2



front 2





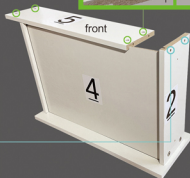
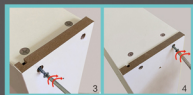
X4

X4

Step. 05

5 back

5 front



X1

X1

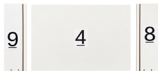
Step. 06



Part 2: vanity drawers



6/7

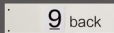
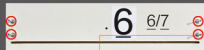


10



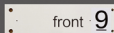
X4

Step. 07

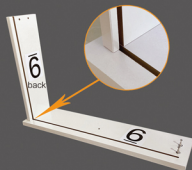


9 back

Step. 08



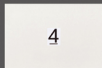
9 front



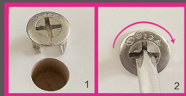
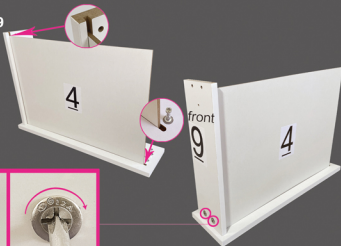


Step.09

X2



X1



Step. 10

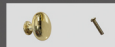
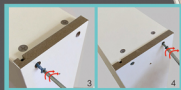
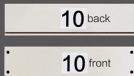
X2



X4

X4

Step. 11



X1

X1

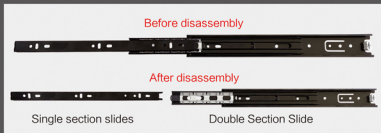
Step. 12



Step. 13



X16



Single section slides

X16

X32

Step. 14

Attach single-section slides to plates 2, 3 and 8, 9 with 0.47 in screws



Step. 15



X6



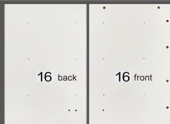
X1



X1

All drawers installed!

Part 3:
storage cabinet



Step. 16

X3

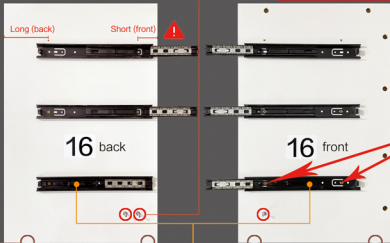
X6

X12

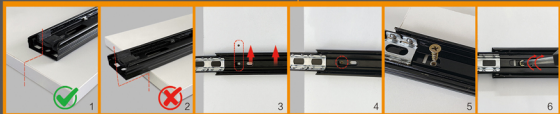
X2



Note: Both the front and back sides of the 16# board need to be install with slide rails.



Installation of each slide requires two 0.47 in screws. This step requires the installation of 6 slides, a total of twelve 0.47 in screw.

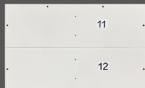


Step. 17



X4

X3



11

12



11

12



Note: The placement orientation of board 11# and 12#



Step. 18



X4



11

12



X3

Step. 19



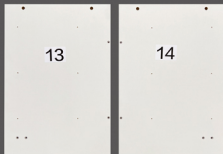
15 back

17 back

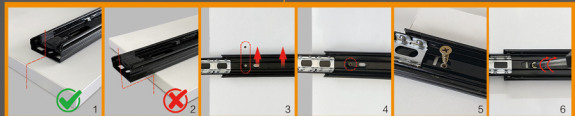
11

12

Step. 20



Installation of each slide requires two 0.47 in screws. This step requires the installation of 6 slides, a total of twelve 0.47 in screw.



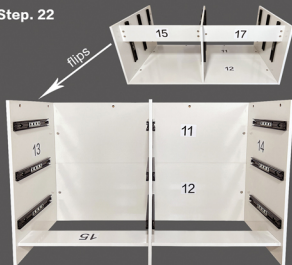


Step. 21

X8



Step. 22

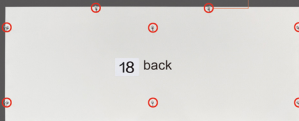


X8

Step. 23

18 back

18 front



Step. 24



X8





X1

Step 25



X5

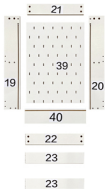
Step 26

Install the remaining drawer 1 on the cabinet, as you did with the drawer in the previous step. The locker installation is complete!



Refer to the last page for information on drawer adjustment methods (Drawer Installation Issues and Solutions).

Part 4: storage shelf



X12

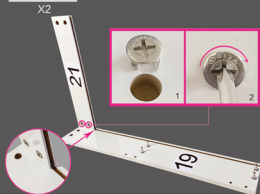
Step 27



X2

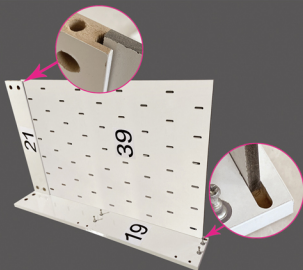
Step 28

: 21 back : | 21 front



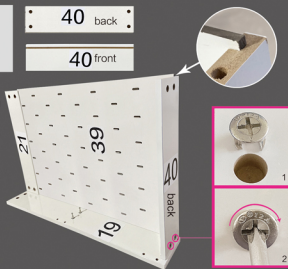
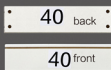


Step. 29

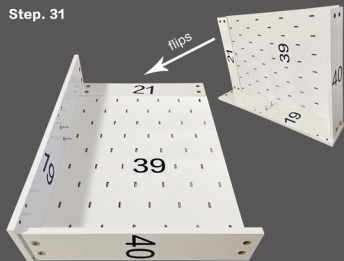


X2

Step. 30

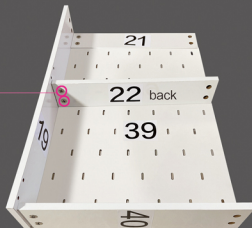
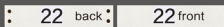


Step. 31



X2

Step. 32



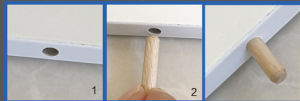


Step. 33

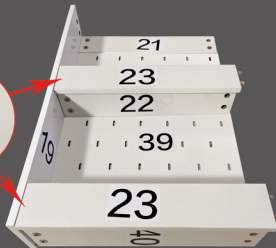
23

X2

X8



Step. 34



Step. 35

X6

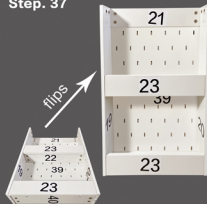


Step. 36

X6



Step. 37



Storage shelf
installation completed !

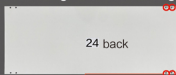
Part 5: Desk section



X4

Step. 38

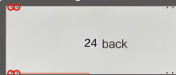
Option 1: storage shelf on the right



24 back



Option 2: storage shelf on the left



24 back



24 front

24 back

The storage shelf can be installed on the left or right side of the vanity, and you can choose option one or two according to your actual needs



24 front

1

19



24 front

1

20

The front of the storage shelf can face either inward or outward.



Outward



Inward



19

23

20

19

1



X4

Step. 39

For example: the storage shelf is on the right side, facing outward



1

2



21

23



1

19

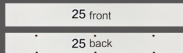


X9

Step. 40



Step. 41



X2



X4

Step. 42

Short (front) 26 Long (back)



X2

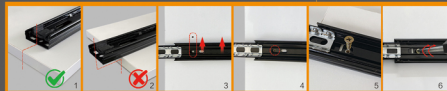


X2

Step. 43



X4



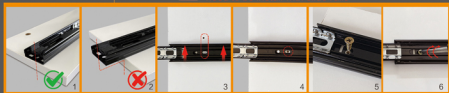


X2

X4

Step. 44

Note: Both the front and back sides of the 27" board need to be install with slide rails



X2

Step. 45

X14

Step. 46

X6

Step. 47



X1

Step. 48



X1

Step. 49

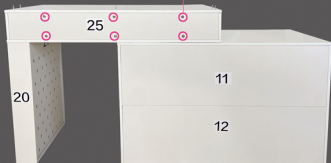


Following the installation steps of the previous drawer, install drawer 7# on the left side of the vanity table.



X6

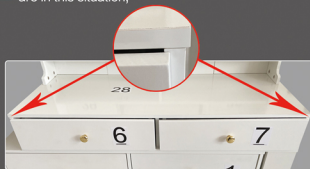
Step. 50



Desk section installation completed !



When the two drawers installed on your dressing table are in this situation,



You need to exchange the installation positions of the two drawers.

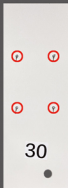
**Part 6:
The vanity mirror**



Step. 51



X8



Step. 52



X8



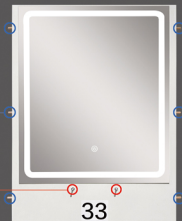
Step. 53



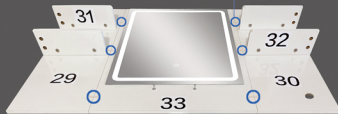
X2



X6



Step. 54





X2

Step. 55

34 front

34 back



X2

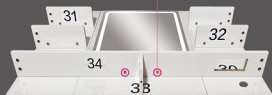
Step. 56

front
35
back
35



X2

Step. 57



X16

Step. 58



X12

Step. 59



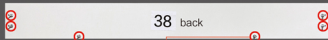
Step. 60



X6

38 front

38 back



Step. 61



X4



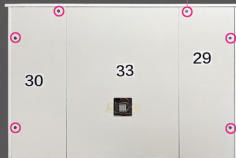
Step. 62



Step. 63



X6



The vanity mirror is installed!

Step. 64



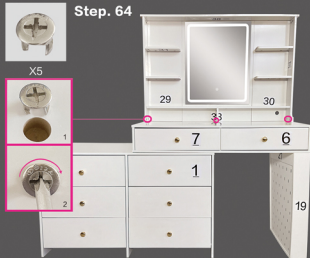
X5



1



2



Step. 65



1

Peel back the tape and remove the pre-wire



Check that the wiring is in a connected state

2



3

Returning lines in the connected state to their original position



X1

Step. 66





Step. 67



Step. 68



Step. 69

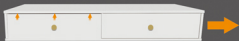


Friendly Reminder :

Gently touch "⏻" to adjust the light color, and long press "⏻" to adjust the light brightness.

In the off mode, long press the switch button to turn off the power indicator light.

Problems with the installation of drawers and solutions 1:

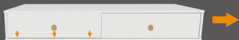


1: Loosen the screws fixing the slide rail

2: Move the slide downward

3: Tighten the screws clockwise

Problems with the installation of drawers and solutions 2 :



1: Loosen the screws securing the slide rail

2: Move the slide upwards

3: Tighten the screws clockwise

The left slide of the drawer is adjusted as follows.:

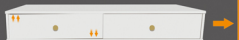


1: Loosen the screws securing the slide rail

2: Move the slide downward

3: Tighten the screws clockwise

Problems with the installation of drawers and solutions 3:



1: Loosen the screws securing the slide rail

2: Move the slide upwards

3: Tighten the screws clockwise