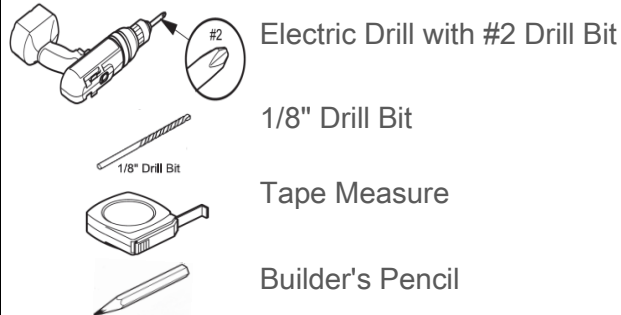


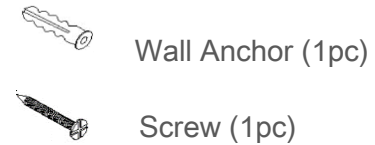
MIRROR INSTALLATION GUIDE



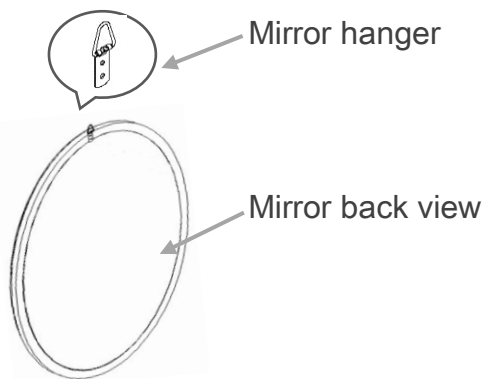
Tools for Assembly (Not Included)



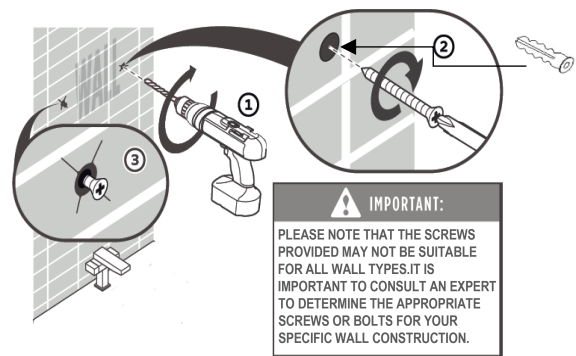
Supplies (Included in Package)



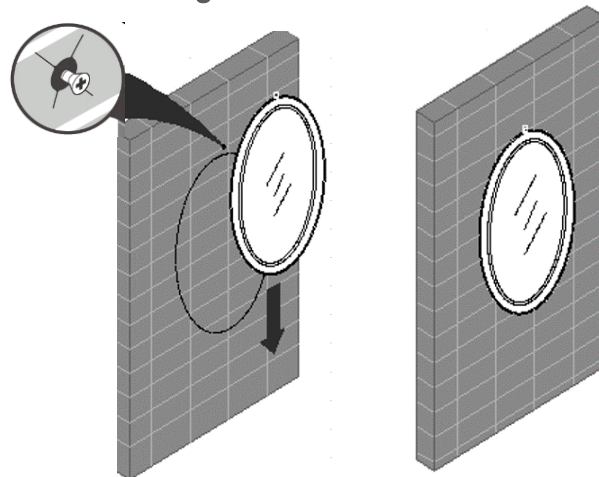
I. Flip the mirror over



II. Mark the desired position on the wall, then drill a hole and insert a wall anchor and screw.



III. Hang the mirror on the wall.



Thank you for choosing Water Creation. Your safety is our top priority, and we hope these instructions help you use our products safely and effectively.