

**TRADITIONAL CHAMPION® 4 ELONGATED
RIGHT HEIGHT™ ONE-PIECE TOILET WITH SEAT**

2034.004

- Vitreous china
- EverClean™ anti-microbial surface inhibits the growth of stain and odor causing bacteria, mold, and mildew.
- Low-consumption (6.0 Lpf/1.6 gpf)
- Features **Champion® 4 Flushing System** performance platform
- 4" non-adjustable, piston action Accelerator™ flush valve
- 16-1/2" rim height for accessible applications
- Elongated siphon action jetted bowl
- 2-3/8" fully-glazed trapway
- Chrome trip lever
- Includes matching styled EverClean™ slow-close wood seat and cover. EverClean™ anti-microbial surface inhibits the growth of stain and odor causing bacteria, mold, and mildew. EverClean™ surface does not protect against disease causing bacteria.
- 100% factory flush tested
- 2 bolt caps
- 10 year warranty



Nominal Dimensions:

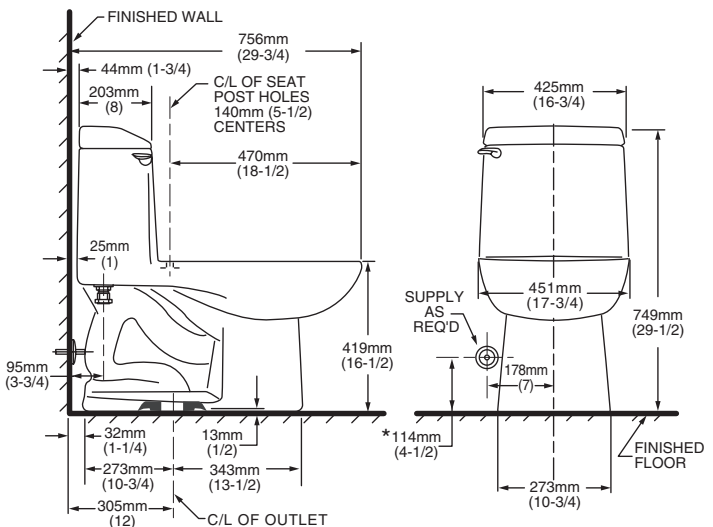
756 x 451 x 749mm
(29-3/4" x 17-3/4" x 29-1/2")

Fixture and seat only, supply by others

Compliance Certifications -

Meets or Exceeds the Following Specifications:

- ASME A112.19.2M for Vitreous China Fixtures- includes Flush Performance, Ball Pass Diameter, Trap Seal Depth and all Dimensions



To Be Specified:

- Color:
 - White Bone Silver Linen Black
- Supply with Stop (by other):



MEETS THE AMERICANS WITH DISABILITIES ACT GUIDELINES AND ANSI A117.1 REQUIREMENTS FOR ACCESSIBLE AND USABLE BUILDING FACILITIES-CHECK LOCAL CODES.

- When installed, top of seat meets minimum requirement of 432 to 483mm (17" to 19") from the finished floor.

NOTES:

THIS TOILET IS DESIGNED TO ROUGH-IN AT A MINIMUM DIMENSION OF 305MM (12") FROM FINISHED WALL TO C/L OF OUTLET. SUPPLY NOT INCLUDED WITH FIXTURE AND MUST BE ORDERED SEPARATELY.

* DIMENSION SHOWN FOR LOCATION OF SUPPLY IS SUGGESTED.

IMPORTANT: Dimensions of fixtures are nominal and may vary within the range of tolerances established by ANSI Standard A112.19.2. These measurements are subject to change or cancellation. No responsibility is assumed for use of superseded or voided pages.

CHAMPION® 4
Flushing System