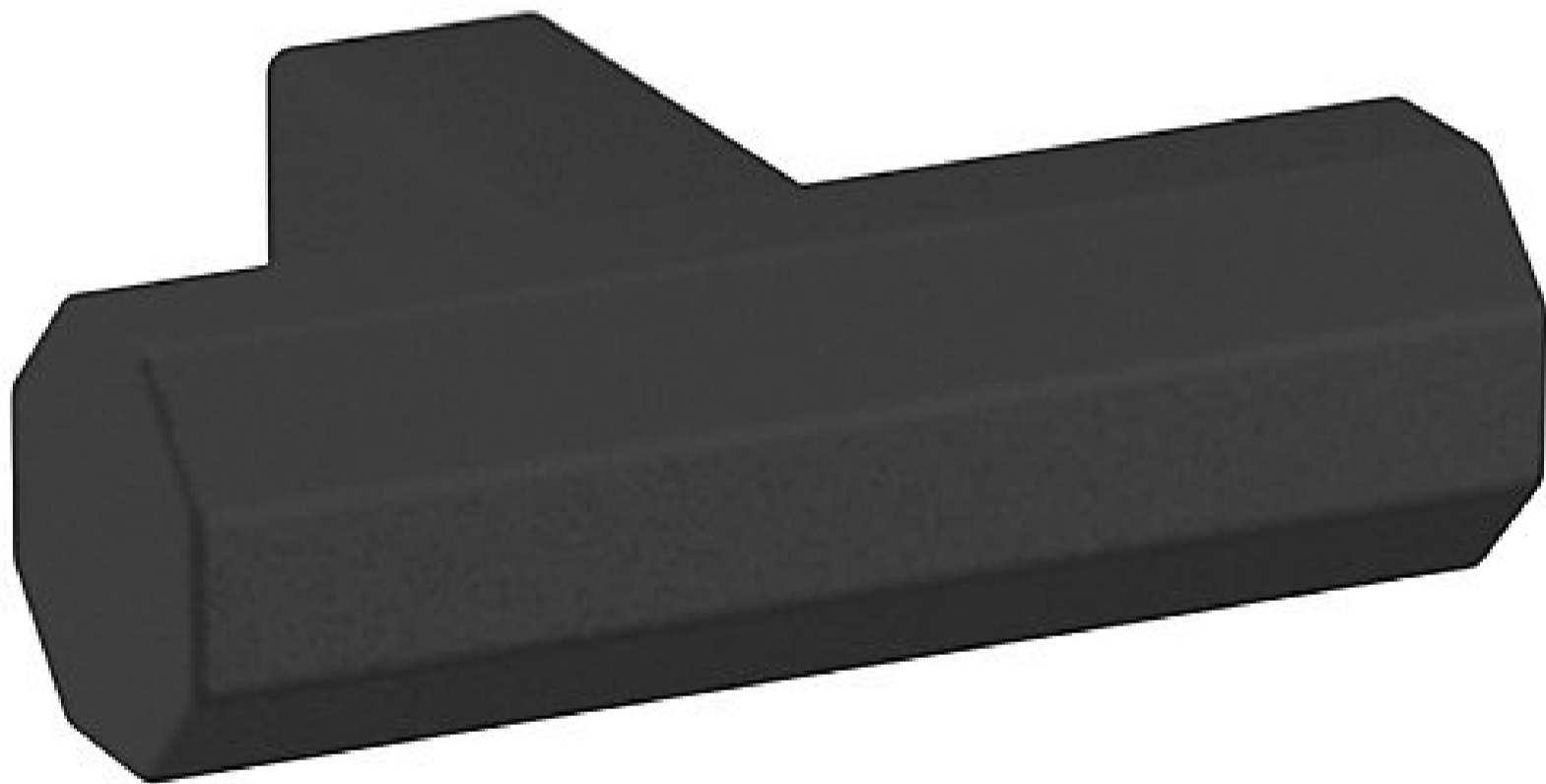


4416 OCTAGONAL KNOB



SPECIFICATIONS

STYLE	Traditional
CABINET KNOB DIAMETER	1.5
PROJECTION	1.14

4416 OCTAGONAL KNOB



ESTATE PORTFOLIO

Model Number:
4416.190.BIN

Key Features

- ✓ This family is available in a knob, and 4", 6", 12", and 18" Pull
- ✓ Solid brass construction, feeling the difference in quality in every piece of cabinet hardware.
- ✓ A versatile finish featuring a deep solid Matte Black over sanded brass brings a sense of history to country looks and a sense of drama to more contemporary designs.
- ✓ Mounting Hardware included

FINISHES OPTIONS



Satin Nickel - 150, US15



Lifetime (PVD) Polished Nickel - 055



Polished Chrome - 260



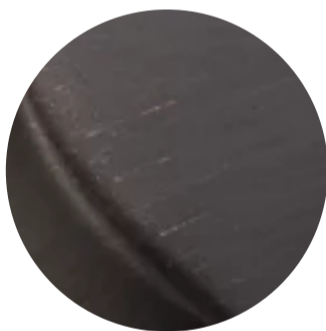
Lifetime (PVD) Polished Brass - 003



Lifetime (PVD) Satin Brass - 044



Satin Black - 190



Venetian Bronze - 112, 11P



Non-lacquered Brass - 031

all measurements in inches

SPECIFICATIONS

STYLE	Traditional
CABINET KNOB DIAMETER	1.5
PROJECTION	1.14