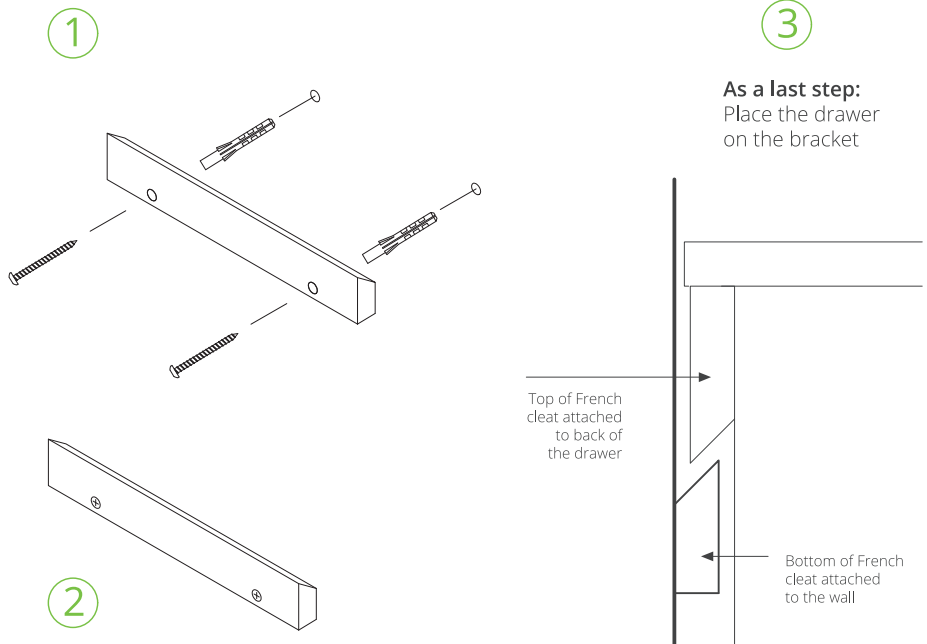


# ASSEMBLY INSTRUCTIONS

Tools needed (not included): Level, Drill, Screwdriver, Ruler or tape measure, Hammer, Pen



**Wall fixings:** As wall materials vary, screws for fixing to wall are not included. For advice on suitable screw systems, contact your local specialised dealer.

**PS!** Please note that product is treated with oil and can rub off on clothing when opening the packaging. This is due to natural differences of the wood as various parts of an item will absorb the oil differently.

## **Serious or fatal crushing injuries can occur from furniture tip-over. To help prevent tip-over:**

- Execute all steps fixation described in this assembly guide.
- Never allow children to climb or hang on furniture.
- Do not set heavy objects on the top of this product.
- It is the users responsibility to ensure the proper use and installation of this product. The manufacturer accepts no responsibility for failure due to incorrect or inappropriate installation.

**Warning!** This bag contains small parts that present a choking hazard for children under 3 years of age. These parts are for adult assembly only and should not permanently affixed to the furniture.