

Assembly Instructions

Caution : You must read this before you proceed

Care & Maintenance



- Not for commercial use. For residential use only.



- Furniture may scratch floors. We recommend using furniture pads to protect your floors.



- Do not put hot items directly on furniture surface.



- Do not clean furniture with harsh cleansers or polish.



- Do not place furniture under direct sunlight.



- Do not place furniture near heating or cooling vents.



- Do not write on furniture without a padded barrier to protect the surface.



- Do not place furniture outside . For indoor use only.



- Stains may be removed with mild soap solution and damp cloth.



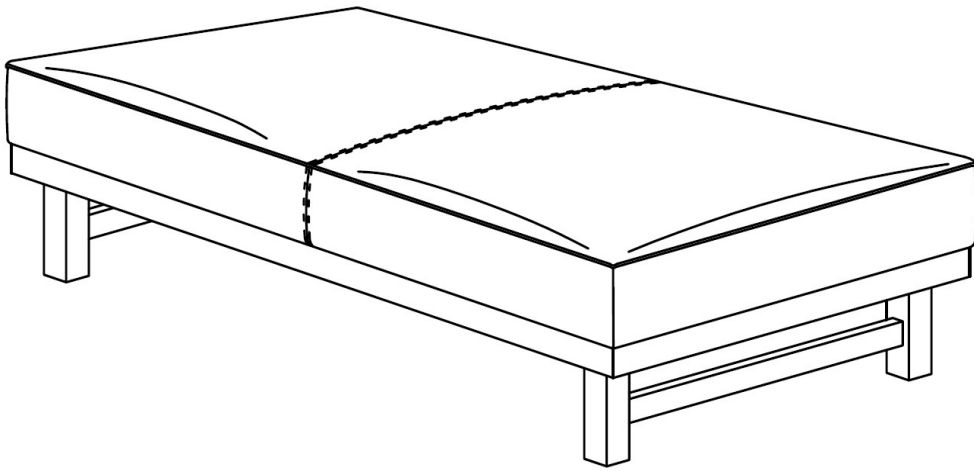
- Children should not climb or jump on the furniture.



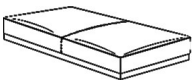
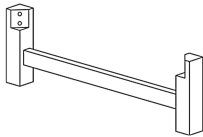
- Dust and pick-up spills using a clean, non-colored, lint-free cloth.

Please look in the magic tape pouch for hardware packs and legs.

OTTOMAN



Part List

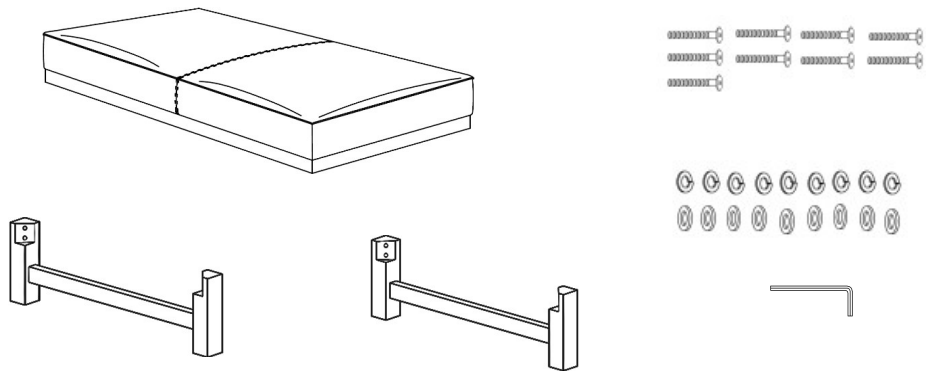
Label	Picture	Description	QTY
A		Ottoman	1
B		Leg	2

Hardware List

Label	Picture	Description	QTY
①		Bolt (M8x50mm)	9
②		Spring Washer	9
③		Flat Washer (M8)	9
④		Allen Wrench	1

Assembly Preparation

Before
Beginning
Assembly:



- Read instructions, cover to cover-



- Have 2 adults on hand for assembly-



- Do not assemble on flooring or carpet-



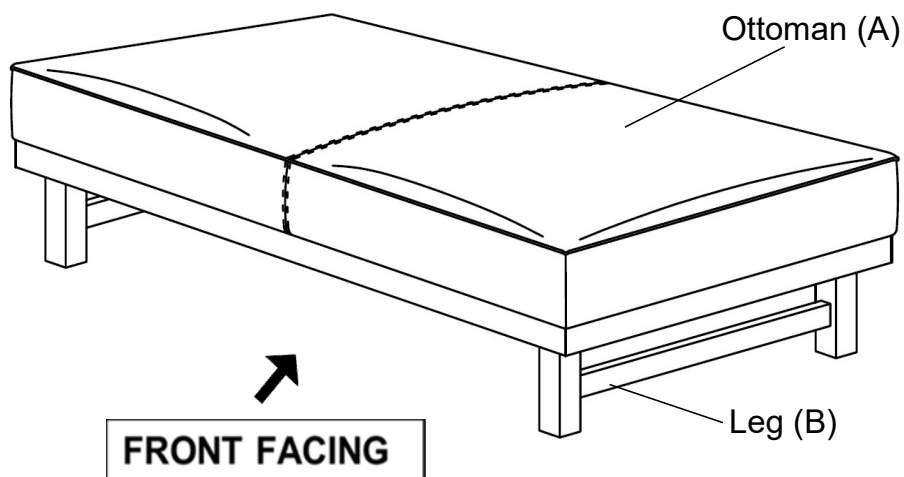
- Assemble on a clean non-marring surface (packing foam)-



- Save all packaging until finished-

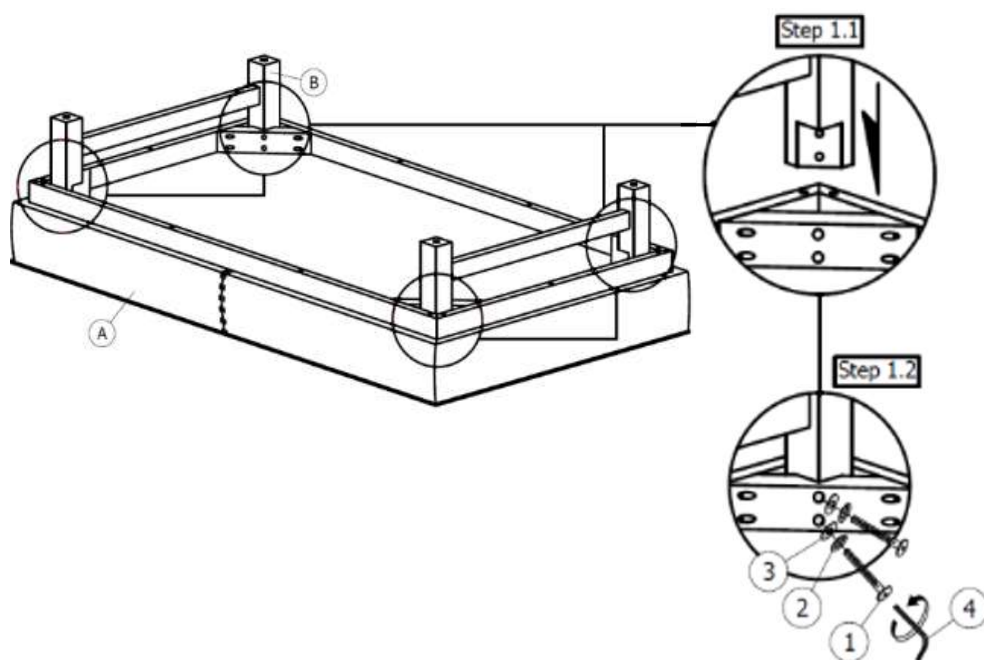
Assembly Steps

Overview



This Ottoman has multiple parts and may require up to 30 minutes to assemble. To give you an overview of the Ottoman parts, the above picture is to help you put the various parts into perspective. Please read through the instructions below to familiarise yourself with the parts and steps before assembly.

Step 1



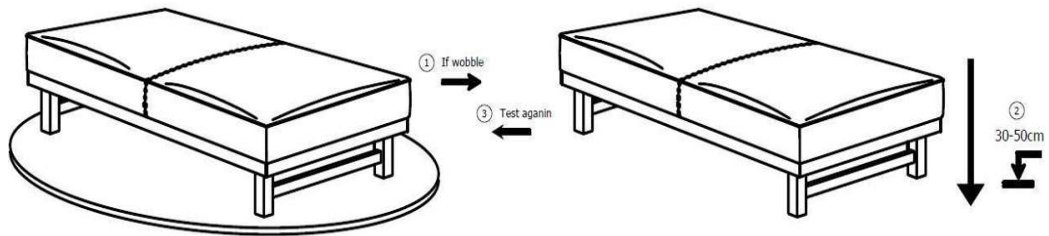
Place the Ottoman(A) facedown on a clean, non-marring surface.

1.1) Insert Legs(B) into Ottoman(A) as specified in the above diagram.

1.2) Attach Legs(B) to Ottoman(A) using Bolts(1), Spring Washers(2) and Flat Washer(3) with Allen Wrench(4).

Do not fully tighten the Bolts.

Step 2



Place the Ottoman on a **LEVEL SURFACE** to see if it wobbles.

If it wobbles, lift the Ottoman some 30cm to 50cm high from the ground.

Keep your feet and toes well away from the drop zone.

Drop the Ottoman freely and vertically with the four Legs, hitting the ground, at the same time.

This Drop Test will help to ensure that all Bolts and gaps reach full alignment status.

Test again for evenness on a **LEVEL SURFACE**.

If no wobbles are found, proceed to tighten all the Bolts.

When tightening the Bolts, tighten sequentially.

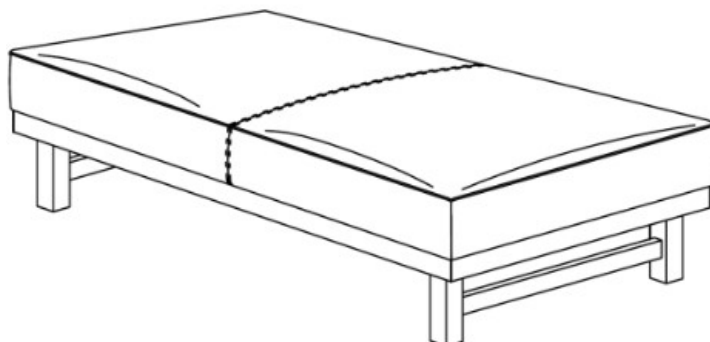
DO NOT tighten any Bolt fully and then move on to the next one.

This may cause the frame to warp.

If there are still wobbles, loosen the Bolts and execute the same drop test.

If the Ottoman is not stable it could lead to damage to the product.

Step 3



Your Ottoman is ready for use.

This Ottoman can only be used on a flat, level surface.