





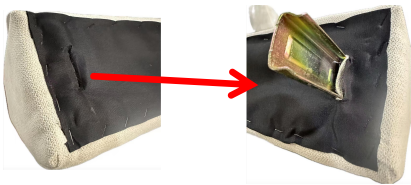


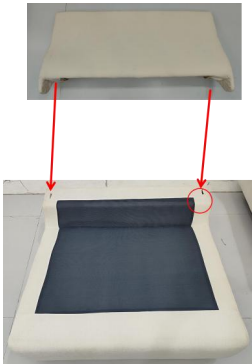
Installation 151-2

To avoid scratches and swallowing parts, please do not install by children!

Hardware List		Hardware List	
 Sofa base	1	 backrest	1
 Back cushion	1	 Seat cushion	1
 armrest	1	 Legs	6
bolt	2		

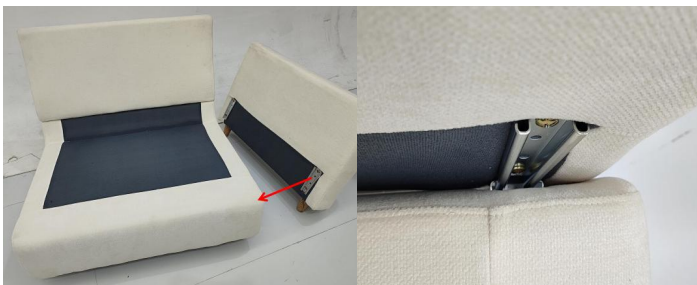


Stick the black cloth tightly along the nylon buckle around the sofa and attach the legs



Secure the legs of the sofa.

Insert the latch into the backrest, and then insert the backrest into the base








Insert the pin at the bottom of the armrest into the pin on the sofa base



The positions and installations of the seats, backrests, and armrest cushions have been completed.

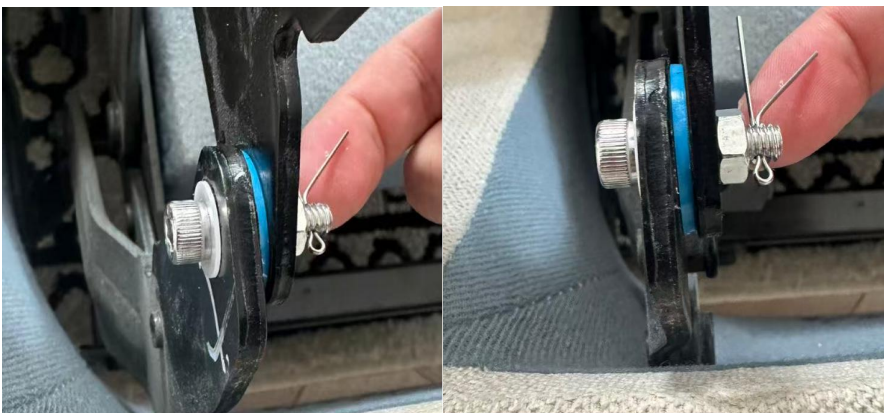
Installation 151-3

To avoid scratches and swallowing parts, please do not install by children!

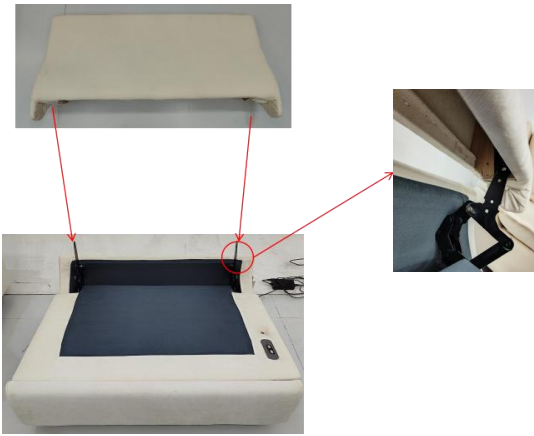
Hardware List			Hardware List		
	Sofa base	1		backrest	1
	Back cushion	1		Seat cushion	1
	Legs	4	Screw accessory kit		1



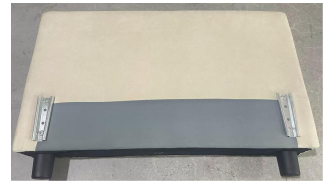
The hinge of the unpacked package is in a folded state.
Open the hinge and place the blue and white spacers



Insert the screw, tighten the nut, insert the wire and bend it, and complete the installation



Insert the latch of the sofa base into the slider of the backbest



Secure the legs of the sofa.



2.Seat cushion



3.Sofa cover



The positions and installations of the seats, backrests, and armrest cushions have been completed.

Connect the two plugs of the power adapter to the sofa base and heating module (on the Seat cushion) respectively






Press and hold the switch button for 3 seconds to start heating. Short press the switch button to switch the temperature, then long press the switch button again for 3 seconds to turn off the heating.



Long press the button in front, raise the leg rest and fold down the backrest. Press and hold the button at the back to retract the leg rest and raise the backrest.

Installation 151-5

To avoid scratches and swallowing parts, please do not install by children!

Hardware List			Hardware List		
	footrest	1		Legs	4
	Seat cushion	1			



Stick the black cloth tightly along the nylon buckle around the sofa and attach the legs

Place the cushion on the footrest and the assembly is complete