

**THANK YOU FOR
CHOOSING**

HILO

**THE ALL-IN-ONE
SMART MIRROR**

www.hilosmartmirror.com



Magic on the wall

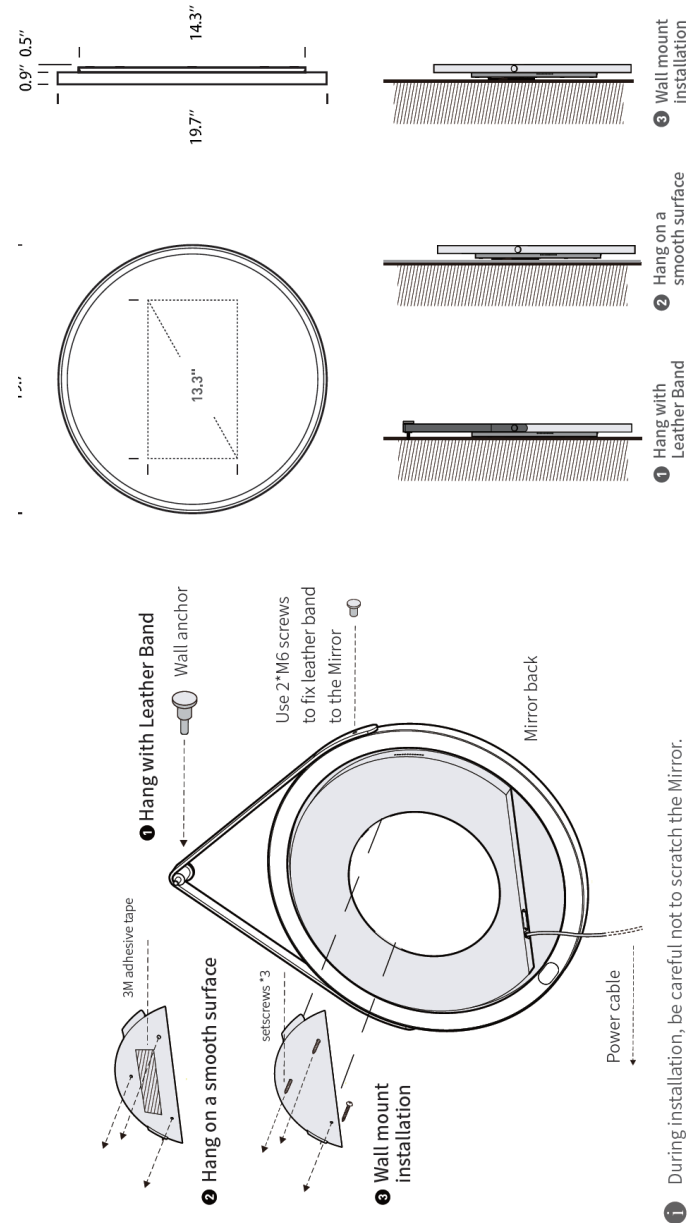
LE MIROIR

Montreal

service@hilosmartmirror.com

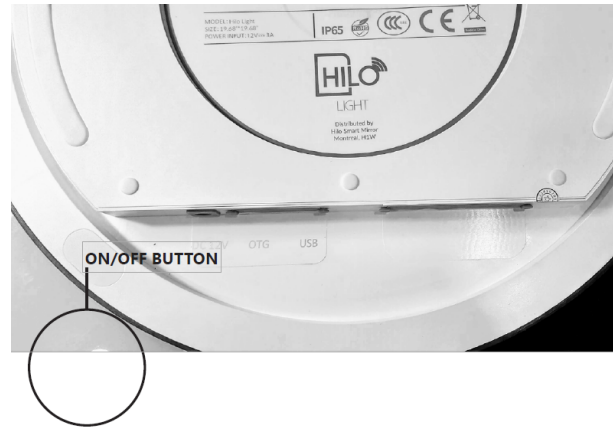


INSTALLATION GUIDE



GETTING STARTED

1. After the installation plug the included adapter into the wall
2. Click on the ON/OFF button on the back panel behind the RED Indicator (as in the first image)
3. Wait until the system finishes starting
4. HILO App turns automatically 30-60 seconds after the mirror is on.



5. Connect to your Home Wi-Fi
 1. Go to setting
 2. Click on Wi-Fi
 3. Select your Wi-Fi d. Type your personal Wi-Fi password
6. You can now go into Play Store and download your Apps
7. We recommend updating Google Play Services

LE MONDE URBAIN LES SENTIERS DES ÉTOILES

Water Resistance

Hilo Mirrors are certified IP65 water-resistant. Mean it resist water splash and mist. But:

- I. CANNOT BE SUBMERGED BY WATER
- II. Must be at least 20" from a water source
- III. In case you noticed some unusual, unplug the mirror and contact our support centre

Privacy

- I. We recommend creating a new Gmail account that will be dedicated to the mirror
- II. Hilo Never collect any kind of data from your device
- II. Hilo uses Android security protocols to keep the device secure
- III. Updates are done over the network if needed, you will receive a pop-up asking you if you like or not to update the system
- IV. Camera: NO CAMERA is installed on consumer products. Cameras are only available to businesses with a formal request