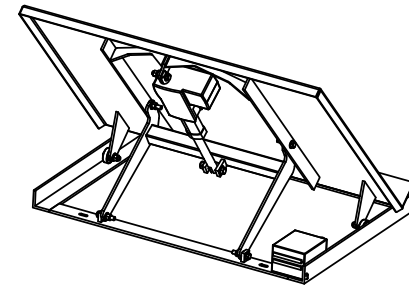
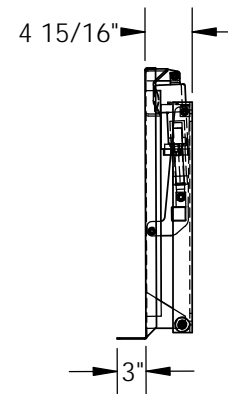
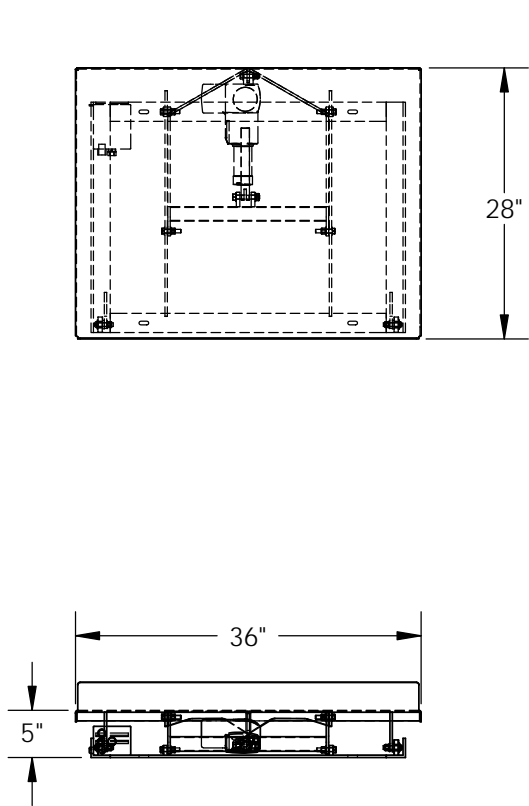


APPROX WEIGHT: 109.98 lbs.
DOES NOT INCLUDE WEIGHT OF POWER OR PACKAGING!!!

BENCH TOP TILTER - BTT-5-36

*** ANY ADDITIONS, DELETIONS, OR OMISSIONS MUST BE CORRECTED ON THIS DRAWING AS THIS DRAWING WILL BE CONSIDERED ALL INCLUSIVE ***
ALL GRAPHICS PROVIDED ARE FOR REFERENCE ONLY. IF CERTAIN DIMENSIONS ARE CRITICAL PLEASE VERIFY THOSE DIMENSIONS WITH YOUR SALESPERSON



SHOW IN THE UPRIGHT
POSITION AT 45°

STANDARD FEATURES

MODEL NUMBER IS BTT-5-36
MAX. CAPACITY IS 500 LBS.
PLATFORM WIDTH IS 28"
PLATFORM LENGTH IS 36"
PLATFORM HEIGHT IS 5"
PLATFORM LIP IS 3"
DEGREES OF TILT: 0° TO 45°
LINEAR ACTUATED
PUSH BUTTON HAND PENDANT
CONTROL
115V SINGLE PHASE STANDARD

DIMENSION TOLERANCE $\pm 1/4"$

SPECIAL FEATURES

NONE

APPROVAL

I, THE UNDERSIGNED, AGREE THAT THE PRODUCT AS REPRESENTED SATISFIES DESIGN AND DIMENSION REQUIREMENTS. I ALSO ACKNOWLEDGE MY DUTY TO CONFIRM PRODUCT AND INSTALLATION COMPLIANCE WITH ALL APPLICABLE FEDERAL, STATE AND LOCAL REGULATIONS AND STANDARDS.
ALL SPECIAL UNITS ARE NON-RETURNABLE
[] As drawn [] As marked

Signed: _____ Date: _____

LEAD TIME WILL START UPON RECEIPT
OF SIGNED APPROVAL DRAWING

DISTRIBUTOR'S NAME:		P.O.#
VESTIL MANUFACTURING		X
DRAWN BY: DEY		W.O.#
DATE: 7/06/10		X
REFERENCE: X	SCALE: 1:20	SALES: X
QUOTED LEAD TIME: X	QUOTE # X	FILE NAME:
		03-007-006