

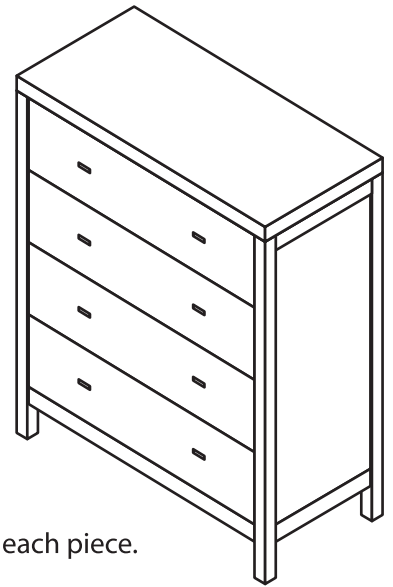
Dresser

Congratulations on the purchase of your Dresser. It has been crafted to the highest standards of quality and safety and will give you many years of enjoyment and practical use.

Since this is a natural wood product, there will be variations in color and grain and minor checking may occur. This is normal and does not compromise the integrity of your dresser. In fact, variation in character of solid hardwood is integral to the beauty and appeal of hardwood furniture and distinguishes it from prefabricated, synthetic and composite materials.

On this insert you will find a list of the hardware and parts included as well as detailed assembly instructions. Assembly is quite simple and requires only a Phillips head screwdriver. Assembly will be most easily accomplished if you take the time to carefully sort the hardware and familiarize yourself with the function of each piece.

If you need assistance with assembly, part replacement or any other matter, please contact the toll-free Customer Service Team. You may also email your request or comments and a customer service representative will respond.



Thank you and Enjoy

HARDWARE & PART LIST

8 **Wooden handles**

Used to attach drawer



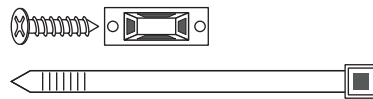
8 **Wood screws**

Used to attach drawer handle



1 **Tip-Over Straps Pack**

8 screws, 2 straps and 4 strap brackets



WARNING:

Furniture tipping over can create a significant hazard in the home, particularly to young children, although adults can be injured as well. It is recommended that casegoods over 30" in height be secured with some form of anti-tip over device. This dresser comes with anti-tip over straps that reduce the risk of tipping. These can be easily installed in minutes. We strongly recommend that you use them, especially where children are concerned and where earthquakes may pose a hazard.

If you find you need to remove a drawer, push and hold the track tabs outward and pull the drawer out the rest of the way. **NOTE: Each drawer is made only for its original location so make sure if you remove more than one they go back in proper order.**

