

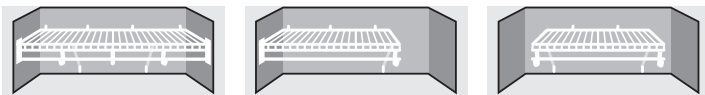


FIXED MOUNT INSTALLATION TIPS

1. SHELF INSTALLATION

There are three ways to install a shelf: Wall-to-Wall, Wall-to-Open, Open-to-Open. Shelves are supported by wall clips and support brackets or support poles. When a shelf is attached to a side wall, a wall bracket is also used.

Choose the right hardware based on the length of the shelf and whether or not it attaches to a side wall.



Wall-to-Wall

Wall-to-Open

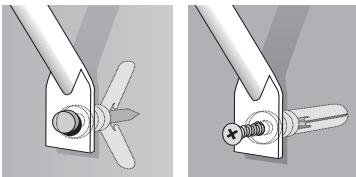
Open-to-Open

2. USE THE RIGHT HARDWARE

Drywall - Use ClosetMaid hardware with attached anchor in drywall that is 5/8 in. thick or less. Drill 1/4 in. hole, insert hardware, and push in pin using the blunt end of a hammer or screwdriver. Punching the holes in the wall or drilling oversized holes will result in a weakened installation. Hammering pins into the wall can result in broken hardware.

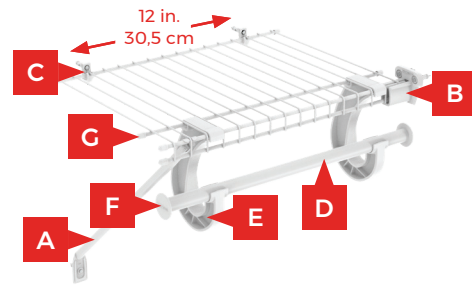
Wood studs - Cut attached anchor off of ClosetMaid hardware and secure to the wall using a #8 x 1 in. screw into the stud.

Concrete (all) and plaster or drywall (over 5/8 in. thick) - Drill 1/4 in. hole, insert hardware with attached anchor, and secure to the wall using a #8 x 1 in. screw.



3. END CAPS

Add caps to every exposed wire on both ends of each shelf and to the ends of closet rods. End caps protect you, your clothing and the shelving materials.



FIXED MOUNT with SUPERSLIDE®

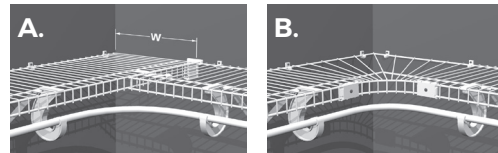
Choose Your Hardware

- | | |
|----------------------------|-----------------------------|
| A Support Bracket | D Closet Rod |
| B Side Wall Bracket | E Closet Rod Support |
| C Wall Clip | F Closet Rod Cap |
| | G Shelf End Cap |

4. CORNERS

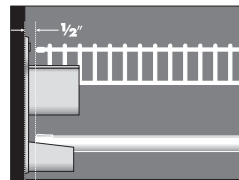
Butt shelves (A). Be sure to allow for the width of the full length shelf when calculating the size of the other shelf. Use a corner support to connect the two shelves. Use a corner hanger bar to connect hanger bars and allow clothes to slide around corners. Or use a corner kit (B) that includes a specially designed corner shelf, corner hanger bar, and all installation hardware.

NOTE: Hanger bar supports should be placed where hanger bars join.



5. MEASURING AND CUTTING SHELVES AND HANGER BARS

Wire shelving can be cut using a bolt cutter or hacksaw. Hanger bars can be cut using a pipe cutter.



6. USING 16 IN. SHELVING

16 in. shelving provides additional storage capacity. It is especially good for storage of linens or boxes and as shoe shelving. Hanger Bars can be installed using 16 in. shelving. When using 16 in. shelving to hang clothes, be sure to use 12 in. support brackets as shown so the shelf is supported properly and hangers can slide unobstructed.



7. ALTERNATIVE HARDWARE

Support poles instead of support bracket when stacking two or more shelves.

ClosetMaid Superslide® shelf system is manufactured by ClosetMaid LLC., Orlando, Florida. Manufacturer reserves the right to change specifications without notice.