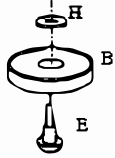


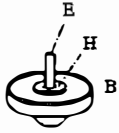
ASSEMBLY INSTRUCTIONS (ATF18)

TEAKWOOD CHAISE LOUNGE WITH ARM, TRAY AND RUBBER WHEELS

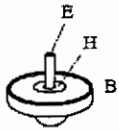
STEP 1.



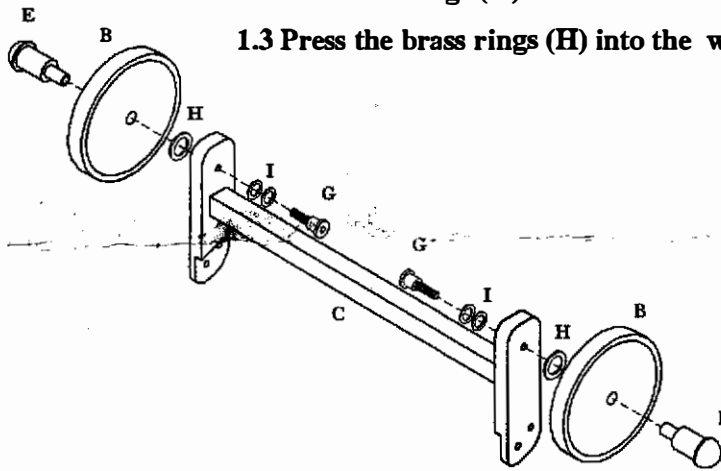
DETAIL 1.



DETAIL 2.



DETAIL 3.



1.1 Insert wheel's fittings (E) into the hole in wheels (B) as detail 1.

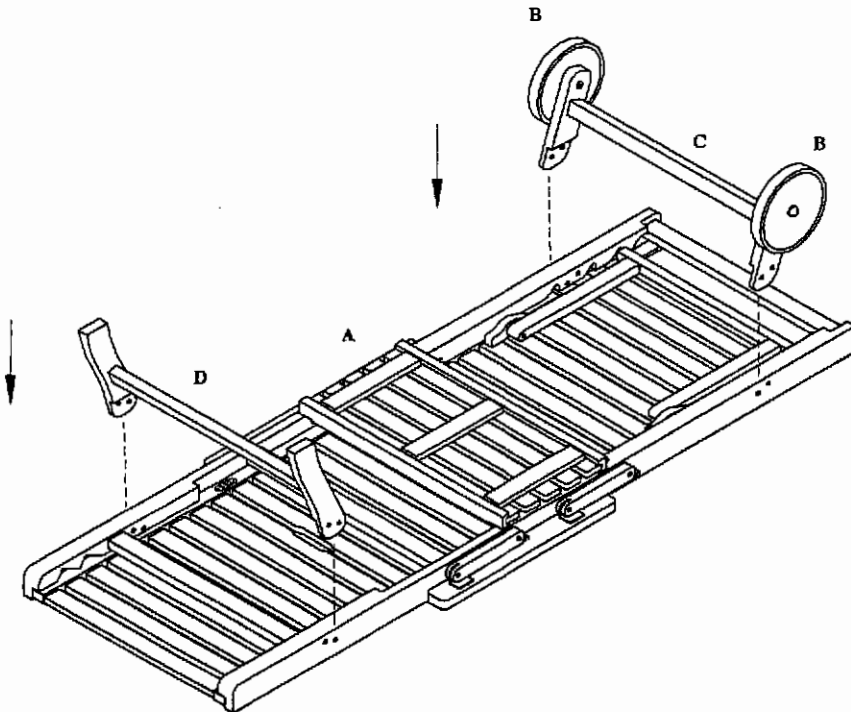
1.2 Put brass rings (H) into the other side of the wheels as detail 2.

1.3 Press the brass rings (H) into the wheel's holes as shown in detail 3.

1.4 Put the wheel which already have wheel fittings (E) and brass rings (H) on the outer side of back leg set (C) as picture step 1.

1.5 Put studs (G) with 2 of fibre rings (I) into each of the inner side of back leg set (C). Tighten up the studs fully by wrench (J)

STEP 2.



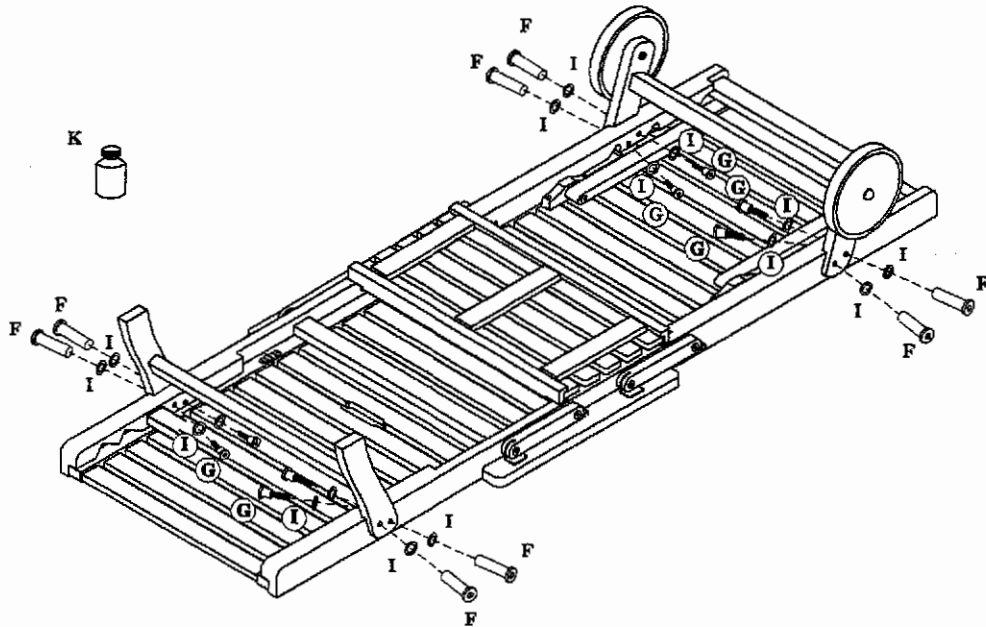
Put front leg (D) and back leg (C) onto the chaise lounge.

ASSEMBLY INSTRUCTIONS (ATF18)

TEAKWOOD CHAISE LOUNGE WITH ARM, TRAY AND RUBBER WHEELS

STEP 3.

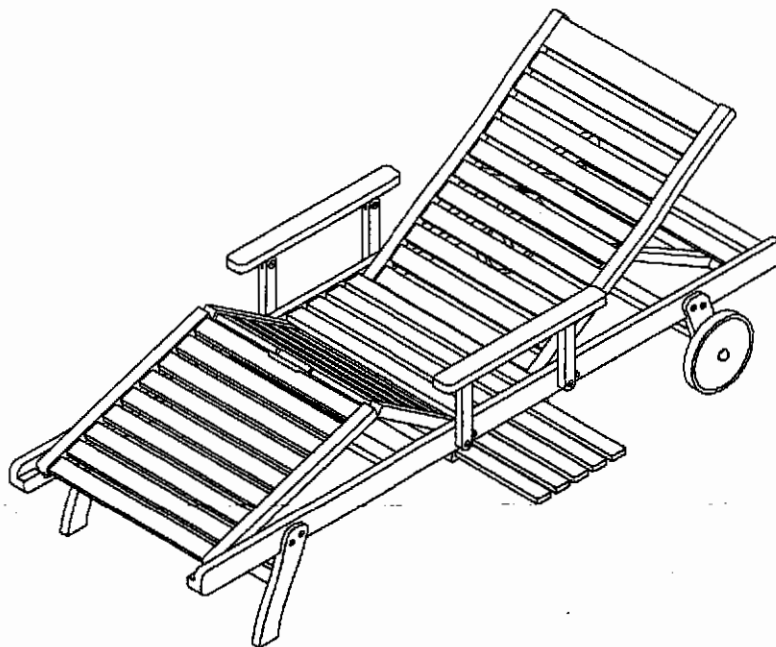
3.1 Please check before tighten up the screws whether you put the front leg and back leg correctly as shown in step 4.



3.2 Put screw (F) with fibre ring (I) into each outer hole of as shown in step 4.

3.3 Put screw (G) with fibre ring (I) into each inner hole. Tighten up the screw by wrench (J).

STEP 4.

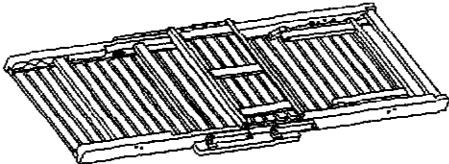
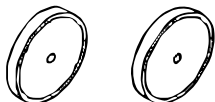
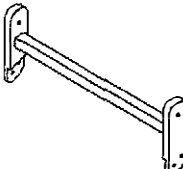
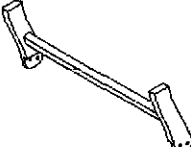

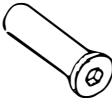



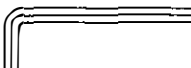


Remark

There is engineering glue on the studs (G) which prevents the studs from becoming loose. Once you tighten up the screws, the glue will work.

If you try to unscrew or tum the studs, the glue will be destroyed.

ASSEMBLY INSTRUCTIONS (ATF18)
TEAKWOOD CHAISE LOUNGE WITH ARM, TRAY AND RUBBER WHEELS

NO.	PARTS.	QTY.
A	<p style="text-align: center;">CHAISE LOUNGE</p> 	1
B	<p style="text-align: center;">WHEELS</p> 	2
C	<p style="text-align: center;">BACK LEGS</p> 	1
D	<p style="text-align: center;">FRONT LEGS</p> 	1
E	<p style="text-align: center;">WHEEL'S FITTING</p> 	2
F	<p style="text-align: center;">SCREW</p> 	8
G	<p style="text-align: center;">STUD</p> 	10
H	<p style="text-align: center;">BRASS RING</p> 	2
I	<p style="text-align: center;">FIBRE RING</p> 	20
J	<p style="text-align: center;">HEXAGONAL WRENCH</p> 	2