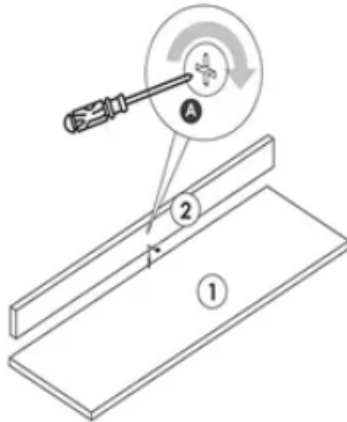
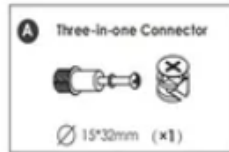


# Assembly Instruction supplement

## Assembly Instructions

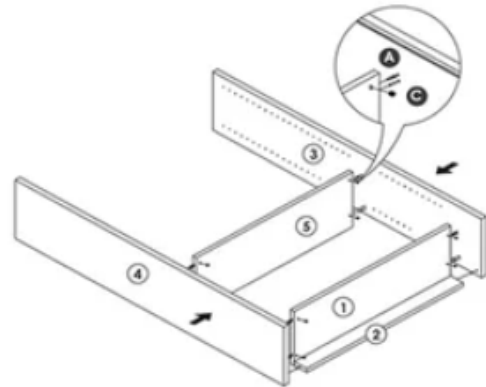
### Step 1:

Fit and fasten the **Base Panel** on the **Bottom Board**.



### Step 2:

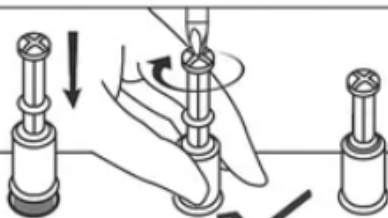
Fit and fasten the **Bottom Board** and fixed **Panel** with two **Side Panels**.



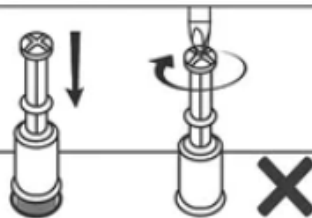
When assemble the A part hardware, do not let the connector pin just sit in the hole, first you need to screw it until its bottom plastic cap is expanded, being fixed in the hole (see below picture).

Then connect the boards and rotate the cam lock for locking it. Thus, the cam screws will not slide out at free.

## IMPORTANT PRECAUTIONS



GRASP THE CAM LOCK PIN!



SCREW DIRECTLY WITHOUT GRASP

### INSTALLATION PRECAUTIONS!



RIGHT TURN  
UNTIL TIGHT

ENSURE THERE IS NO GAP  
BETWEEN THE PANELS

### IMPORTANT!

Place the black cap of the 3 in 1 into the hole and tighten the screw to expand the plastic cap which will hold it securely to the board. Otherwise, the bookcase will probably collapse.

### WARNING!

When tighten the Cam lock Pin, we must make sure that the the bottom part will not rotate. So please hold the bottom tightly with your fingers as left picture shows.

### IMPORTANT!

After inserting the panel, ensure there is no gap between the panels. If there is a gap, check the direction of the Cam Lock. Then turn the CamL lock to the right until tight.