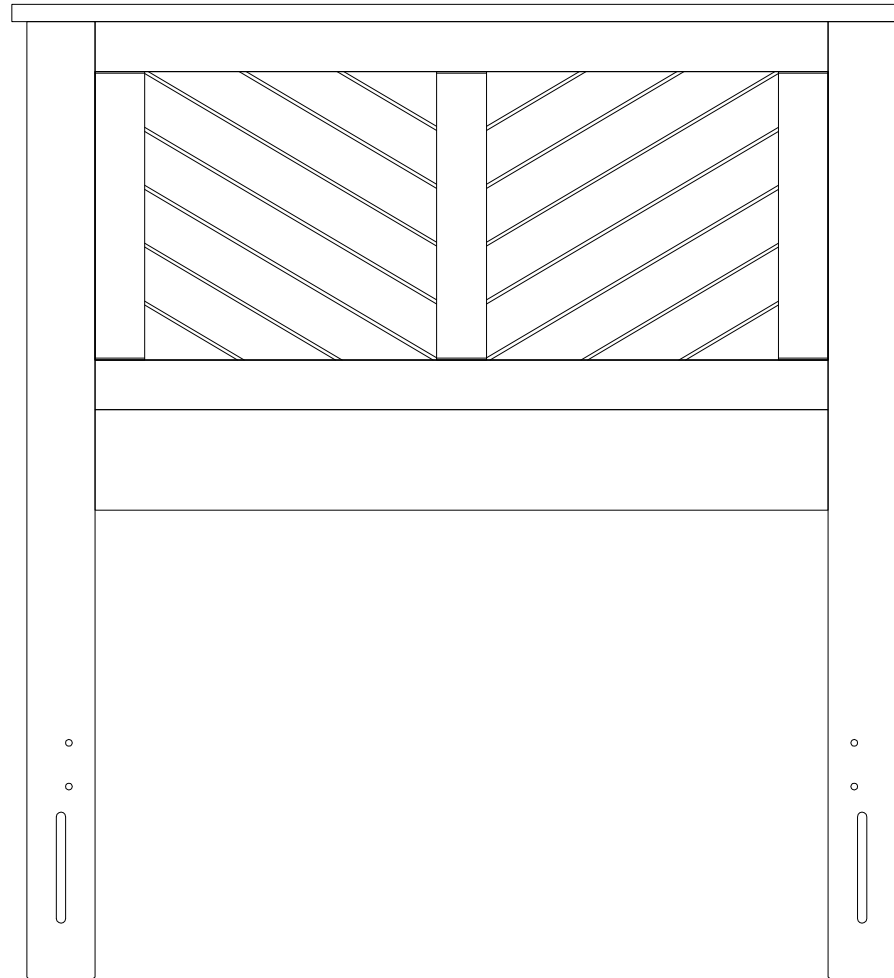


ASSEMBLY INSTRUCTIONS:

TWIN HEADBOARD



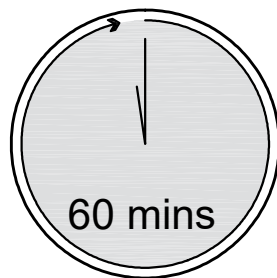
TWIN HEADBOARD

Page 2 of 8

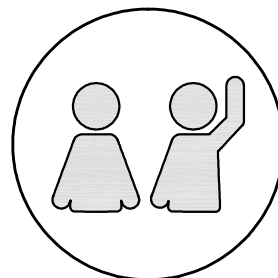
ASSEMBLY INSTRUCTIONS

Read these instructions carefully and keep for future reference. Refer to parts inventory for guidance, and ensure you have all pieces before starting.

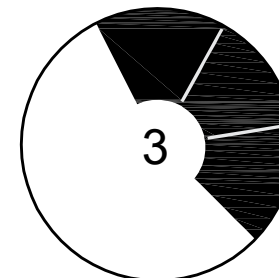
When assembling, place all parts on a soft, clean, and flat surface such as a carpet to prevent scratches.



TIME



OF PEOPLE





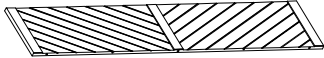


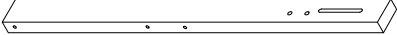
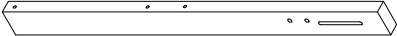
DIFFICULTY

Important: Use hand tools for assembly. Power tools can lead to over-tightening and damage.


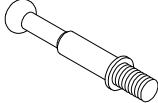
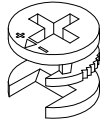
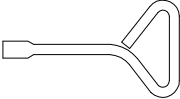
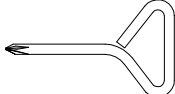
TWIN HEADBOARD

Page 3 of 8

Parts List

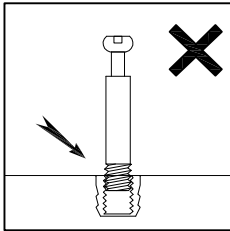
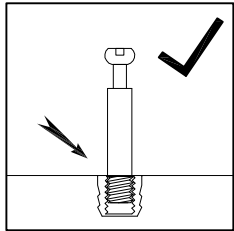
CODE	DESCRIPTION	QTY
A4	Headboard Top 	1 pc
B4	Crossbar Top 	1 pc
F4	Headboard 	1 pc
C4	Crossbar 	1 pc
D4	Crossbar Bottom 	1 pc
G-R	Right Leg 	1 pc
G-L	Left Leg 	1 pc

Hardware List

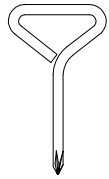
CODE	DESCRIPTION	QTY
1	Dowel Ø8x1-1/8" 	4 pcs
2	Cam Lock Bolt Ø1/4"x1-3/8" 	16 pcs
3	Cam Lock Ø15 	16 pcs
4	Flat Head Screwdriver 	1 pc
5	Philips Head Screwdriver 	1 pc

TWIN HEADBOARD

1



5



A4

2

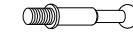
G-L

G-R

B4

C4

1



2

Ø1/4"x1-3/8" 15 pcs

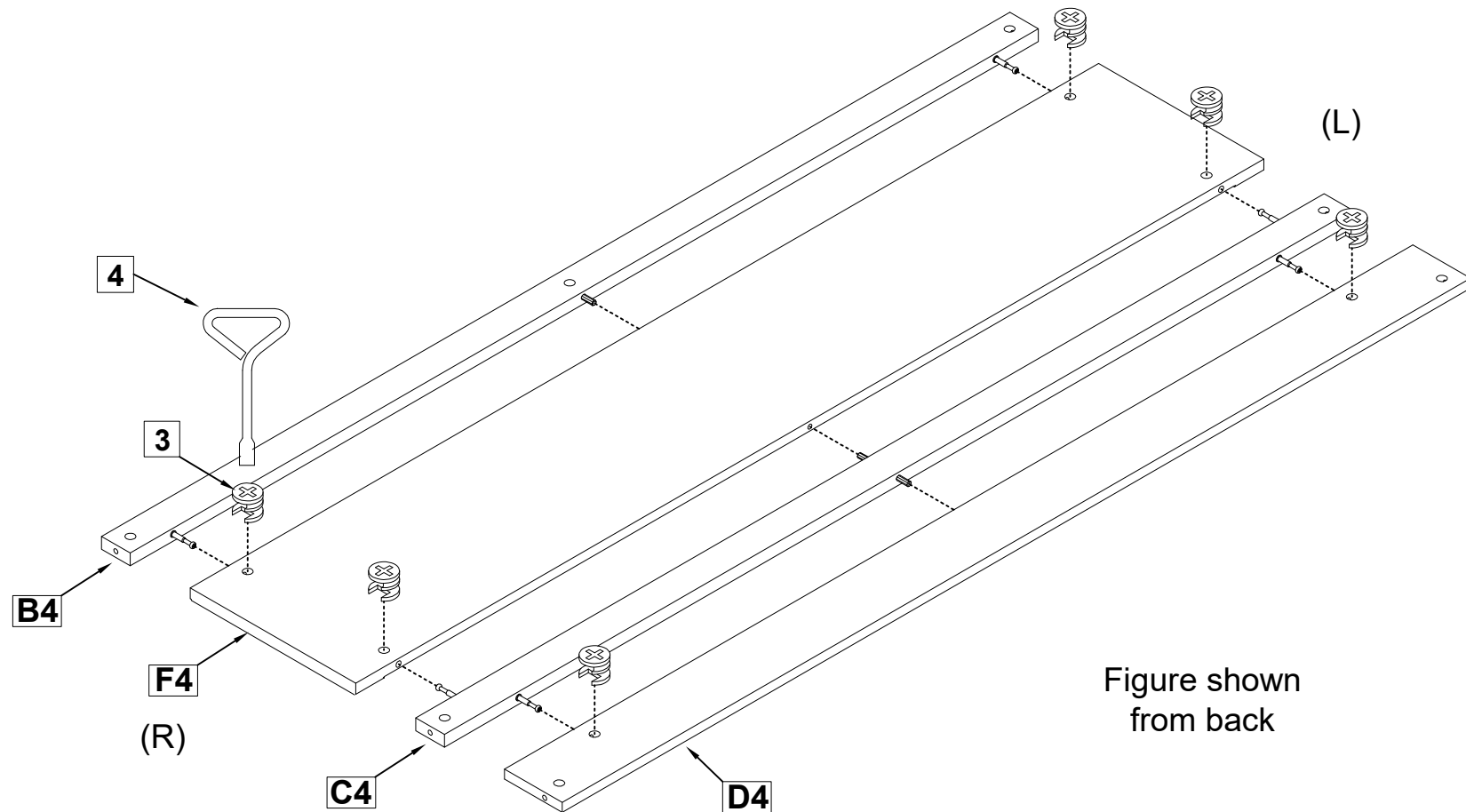
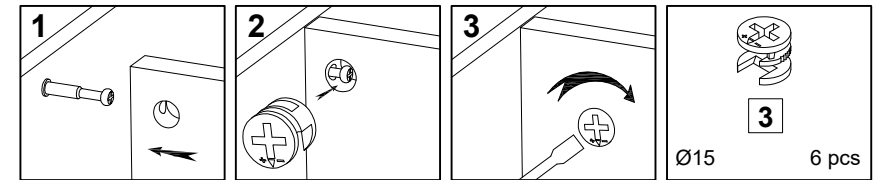


1

Ø8x1-1/8" 3 pcs

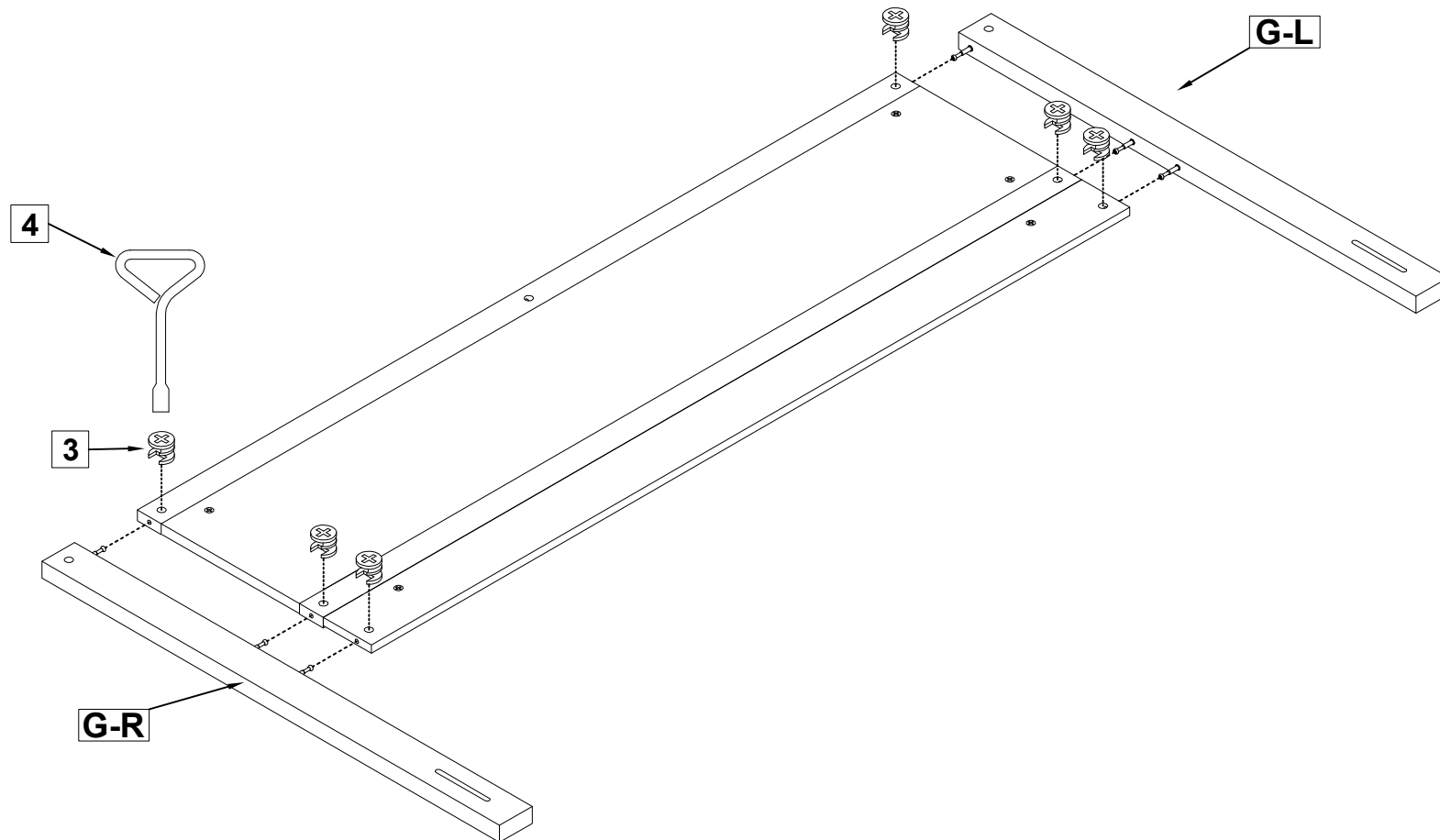
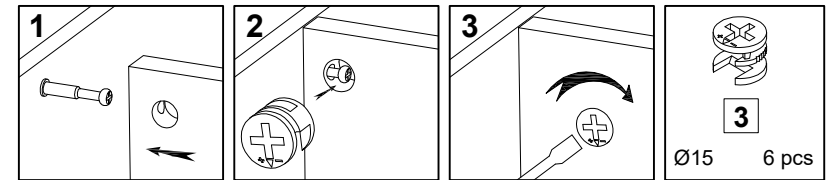
TWIN HEADBOARD

2

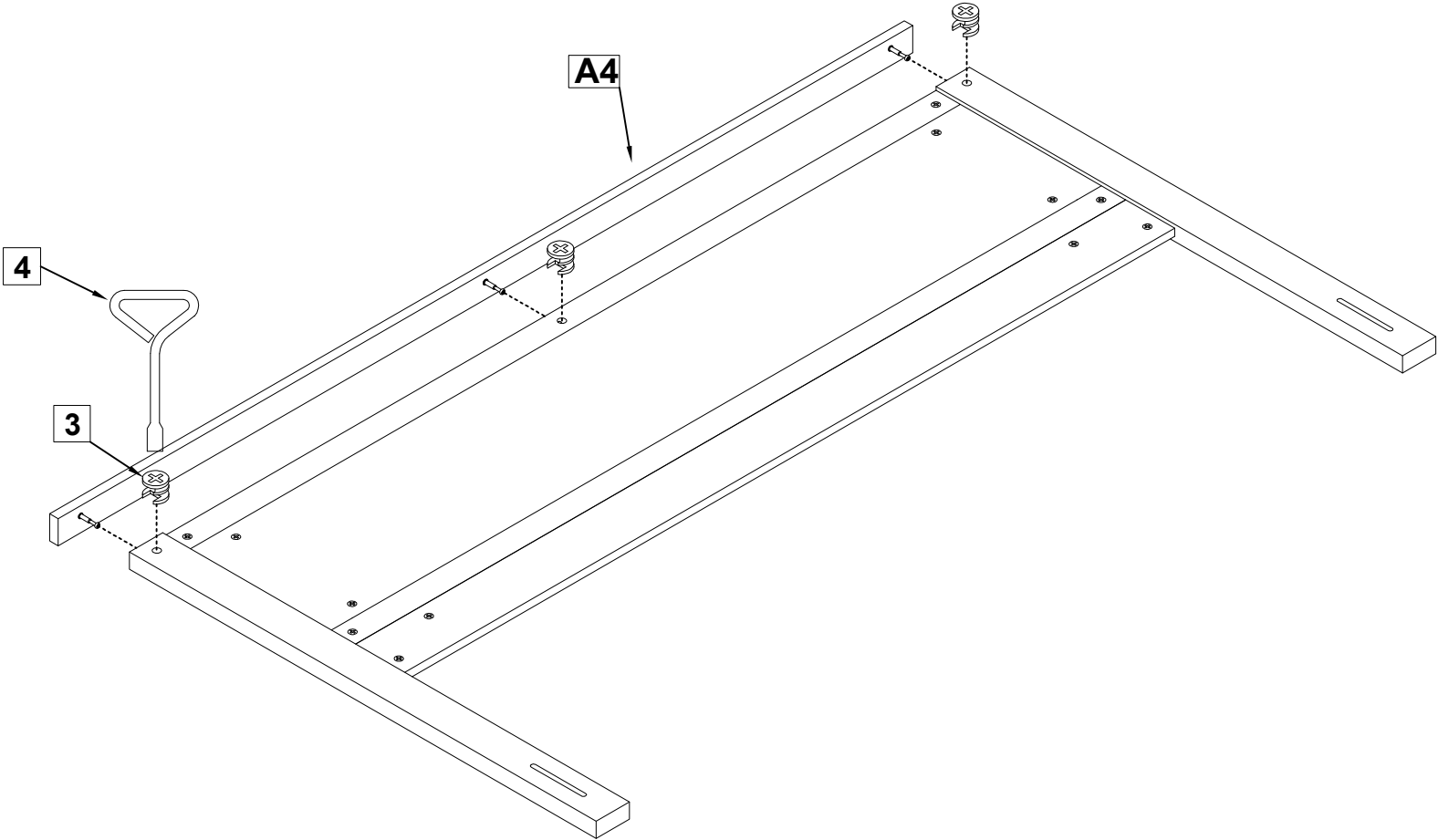
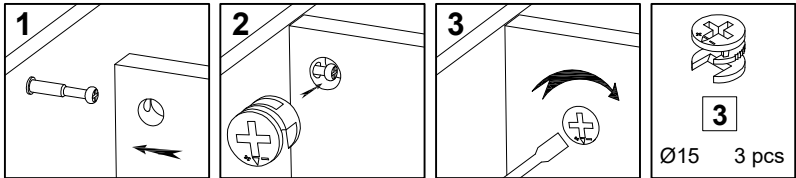


TWIN HEADBOARD

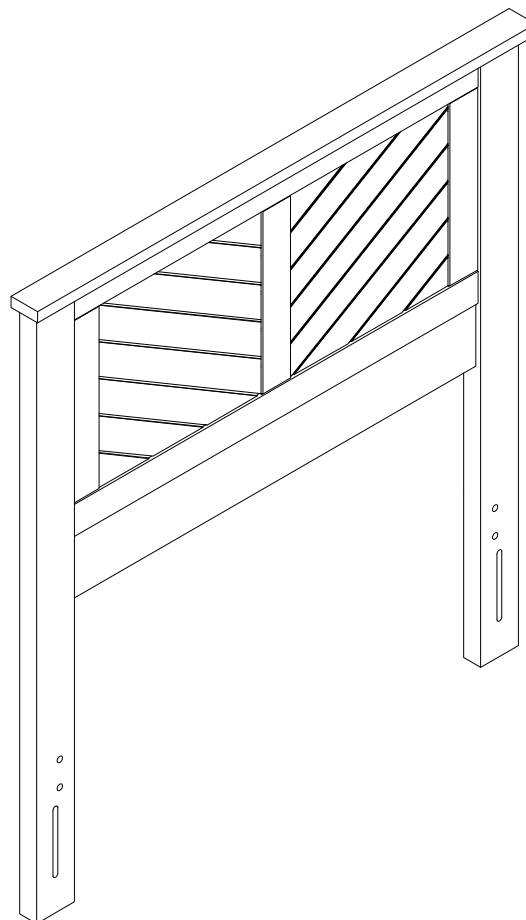
3



4



5



Attach the frame to the headboard using the long slots located on the lower portion of the legs of the headboard (hardware not included), these are designed to accommodate varying height bed frames. The holes with inserts are used with the bed frame that We produce for the headboard only.

Hardware/Assembly Tips:

With the headboard in position to be mounted to the frame, measure the length from the back of the headboard to the inside of the bedframe, allow enough additional length to add a couple of washers and a nut to secure the headboard to the frame.