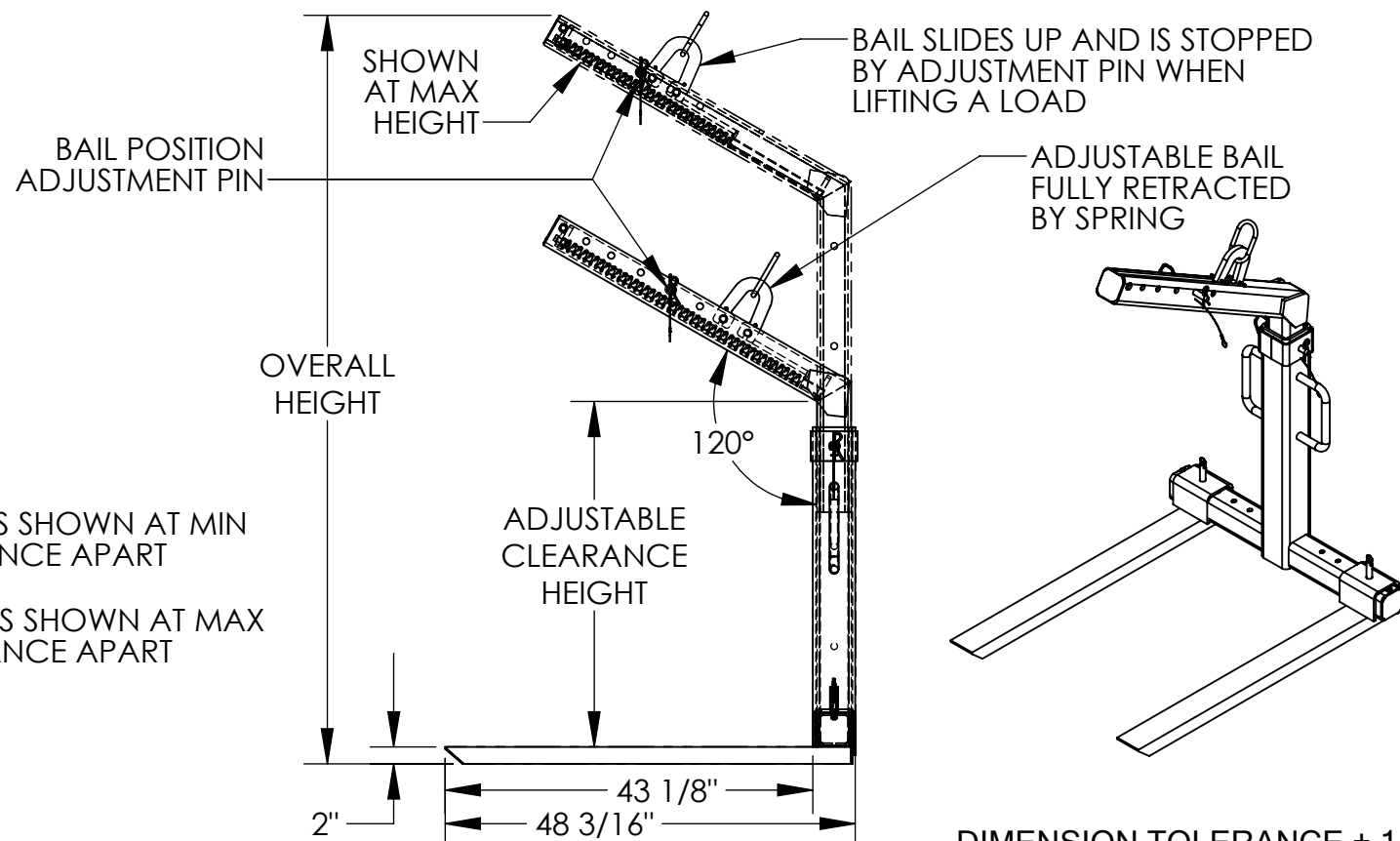
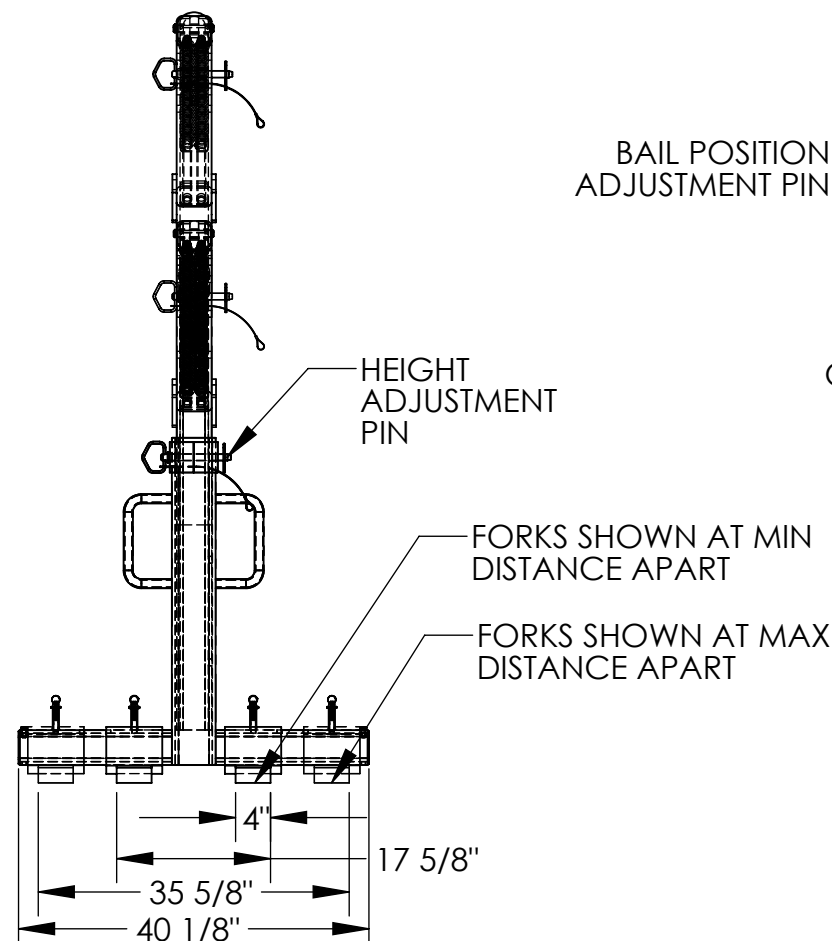


ADJUSTABLE OVERHEAD LOAD LIFTER - OLA-4-42

APPROX WEIGHT: 494.42 lbs.
DOES NOT INCLUDE WEIGHT OF POWER OR PACKAGING!!!

*** ANY ADDITIONS, DELETIONS, OR OMISSIONS MUST BE CORRECTED ON THIS DRAWING AS THIS DRAWING WILL BE CONSIDERED ALL INCLUSIVE ***

ALL GRAPHICS PROVIDED ARE FOR REFERENCE ONLY. IF CERTAIN DIMENSIONS ARE CRITICAL PLEASE VERIFY THOSE DIMENSIONS WITH YOUR SALESPERSON



DIMENSION TOLERANCE $\pm 1/4"$

STANDARD FEATURES

MODEL NUMBER IS OLA-4-42
MAX CAPACITY IS 4,000 LBS
ADJUSTABLE CLEARANCE HEIGHT IS
40 9/16", 52 5/16", AND 64 1/16"
OVERALL HEIGHT IS
64 3/8", 76 1/8", AND 87 7/8"
ADJ. FORK SPREAD (OUTSIDE TO OUTSIDE)
MAX IS 35 5/8", MIN IS 17 5/8"
FORK SIZE IS 2" H X 4" W
USABLE FORK LENGTH IS 43 1/8"
OVERALL WIDTH IS 40 1/8"
OVERALL LENGTH IS 48 3/16"
DURABLE LIQUID PAINT BLUE FINISH

SPECIAL FEATURES

NONE

APPROVAL

I, THE UNDERSIGNED, AGREE THAT THE PRODUCT AS REPRESENTED SATISFIES DESIGN AND DIMENSION REQUIREMENTS. I ALSO ACKNOWLEDGE MY DUTY TO CONFIRM PRODUCT AND INSTALLATION COMPLIANCE WITH ALL APPLICABLE FEDERAL, STATE AND LOCAL REGULATIONS AND STANDARDS.

ANY MODIFIED UNITS ARE NON-RETURNABLE

[] As drawn [] As marked

Signed: _____ Date: _____

Printed Name: _____

LEAD TIME WILL START UPON RECEIPT OF SIGNED APPROVAL DRAWING

FOR INTERNAL USE ONLY
PROJECT SIGN OFF

SALES	
ENG.	
FAB.	
POWER	

DISTRIBUTOR'S NAME:

VESTIL MANUFACTURING

DRAWN BY: ND

DATE: 05/22/2009

REFERENCE: X

SCALE: 1:22

QUOTED LEAD TIME: X

QUOTE #
X

P.O.# X

W.O.# X

SALES: X

FILE NAME:

38-007-031