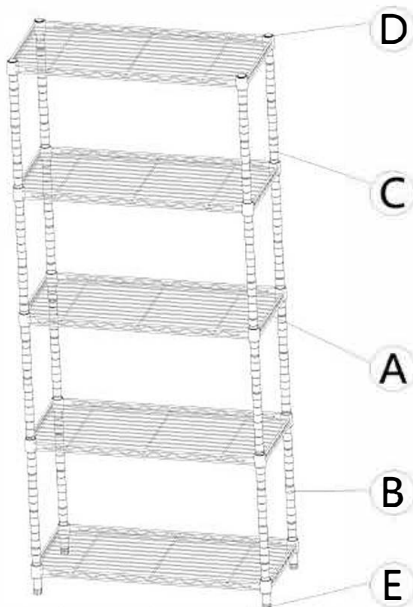
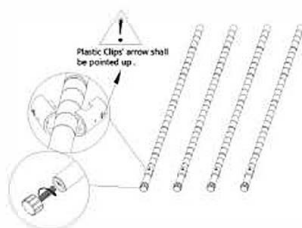


# WIRE SHELVING INSTRUCTION

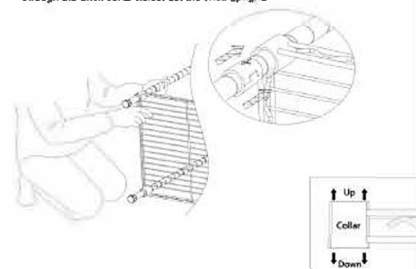
## Assembly Steps:



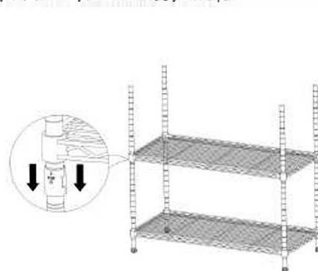
1 Screw four pieces Leveling Feet(E) into the bottom of each Lower Pole(B). And snap the Plastic Clips (D) on the grooves of each lower pole at the same position. Make sure the arrow of all the plastic clips should be pointed up.



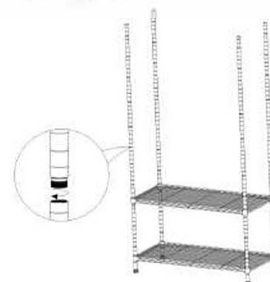
2 Please make sure that you have the Wire Shelf(A) the correct way up. Hold the shelf on its side and slide the top of four lower poles through the bottom of each shelf at its corners until there is snug fit. After the four poles have been slid through the shelf collar holes, set the shelf upright.



3 Refer to the Step ① to snap plastic clips on the grooves of four pieces (lower poles) at your desired position for next wire shelf. Slide down the next wire shelf from the top of each lower pole down onto the plastic clips.



4 Screw Upper Poles(C) into lower poles by screw connectors which are already assembled on the upper poles.



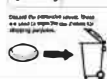
5 Refer to the Step ③ to snap the plastic clips on the same grooves of each pole at your next desired position for other three pieces wire shelves. And then assemble other three pieces wire shelves.



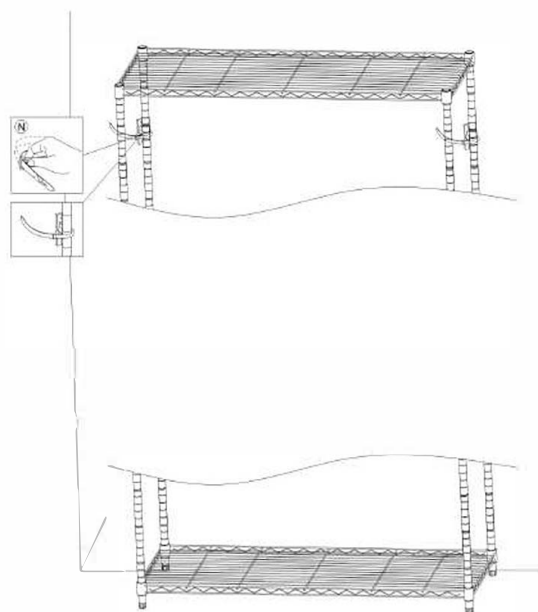
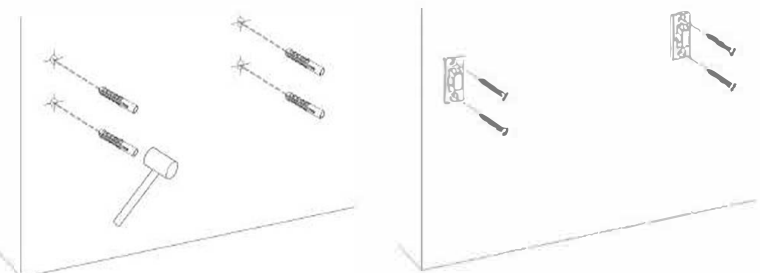
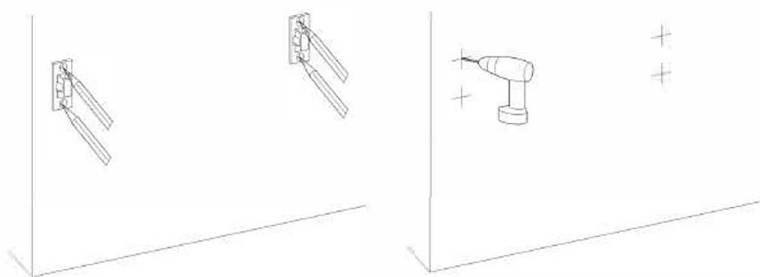
6 Pushing firmly down on every wire shelf at corners by rubber mallet to ensure all the wire shelves in a place over the plastic clips. And screw leveling feet in or out to attain proper leveling.



No.	A	B	C	D	E
Name	Wire Shelf	Lower Pole	Upper Pole	Plastic Clip	Leveling Feet
Parts					
Quantity	5PCS	4PCS	4PCS	40PCS	4PCS



⑦ It's recommended to install the included anti-tip device for safety.



No.	N
Name	Anti-Tip Device
Parts	
Quantity	1SETS