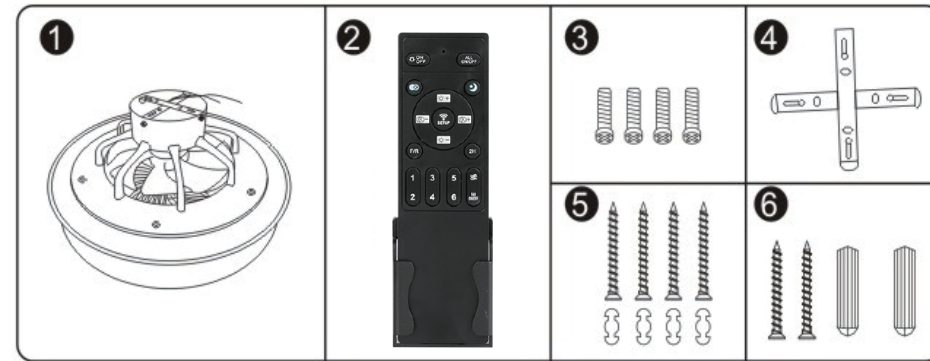


## 1.WARM TIPS

- ① Please install according to the instructions when installing.
- ② We suggest you ask a professional technician for help if you are not good at installation.
- ③ Do not touch when the lamp is lit. In the event of a malfunction, the power must be deactivated first! It should be specially maintained by an electrician or qualified personnel.
- ④ If you have any questions, please email us, we will reply in 24 hours.

## 2.Package Include:

- ① Ceiling fan with light
- ② Remote control (without batteries)
- ③ 4 mounting bracket screws
- ④ Mounting Bracket
- ⑤ Pointed Screws and Drop in Anchors
- ⑥ Screws for hanging the remote control



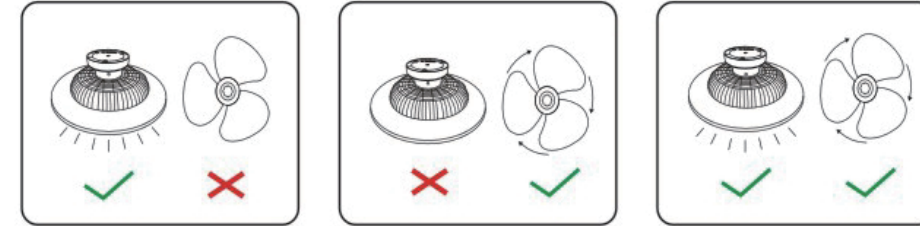
## 3. Wall Switch

In order to ensure the normal work of LED Light recommend to use ordinary wall switch.



## 4. Function Test

1. Don't install the fan light, put it flat and check the product function firstly.
2. When your remote control or APP is unavailable, follow these steps to test the wall switch before using it.
3. How to test: Power on - Power off - Power on - Power off - Power on

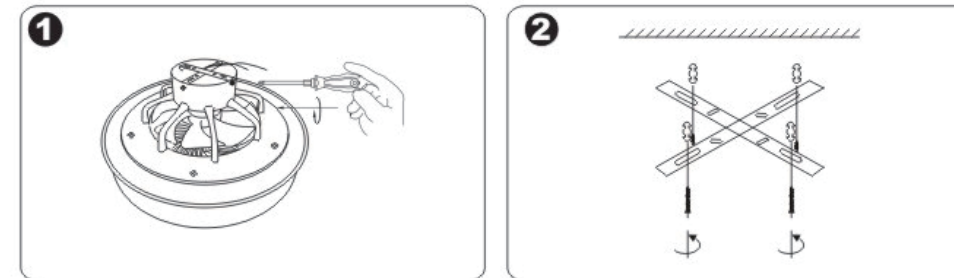


Power on first:  
Light on, no fan run

Power on second:  
Fan run, no light on

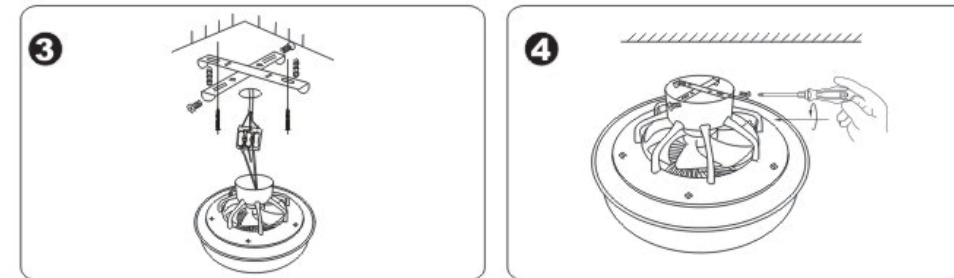
Power on third:  
Light on, fan run

## 5. How to Install



Remove the mounting bracket screws

Install the mounting bracket on the ceiling and fix it with screws( Pointed Screws+Drop in Anchors )



Connect the black wire to the live line, and the white wire to the neutral line.

Secure the mounting bracket screws

## Remote control button function

- : Code matching key: the lamp is powered on for 3 seconds, press briefly, and the lamp flashes successfully
- : Clear code key: long press for 5 seconds, turn on the wall switch at the same time, and the light flashes to clear code successfully
- : Light on/off
- : Turn off fans and lights
- : Color temperature switching white light, yellow light and neutral light
- : Turn on the night light
- : Brightness+, short press to increase brightness by 10%
- : Brightness -, short press to reduce brightness by 10%
- : Color temperature+, short press to increase color temperature by 10%
- : Color temperature -, short press to reduce color temperature by 10%
- : Switching fan forward/reverse
- : Timed for 2 hours
- : Natural wind
- : Turn off the fan

Fan gear key: number keys 1~6 for gear switching

Battery model: NO 7 15V\*2



## Instructions for Fan Lamp Remote Control

### Usage of Remote Control

1. If the remote control is not used for a long time, please remove the battery.
2. Code matching:  
Turn on the power supply, press and hold the code matching key within 3 seconds when the light is on, until the fan light flashes once, which means the code matching is successful.  
If you need to match the second time, you need to wait 30 seconds to turn on the power and repeat the above operation.



Scan any QR code, and after checking the code, you can control the light of the mobile app  
Code matching method: press the code matching key within 3S after the host is powered on; (the lamp flashes once, and the code matching is successful)