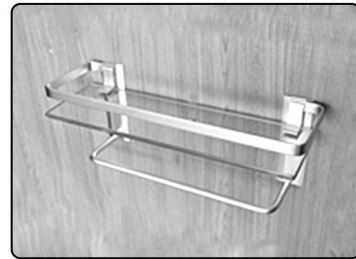
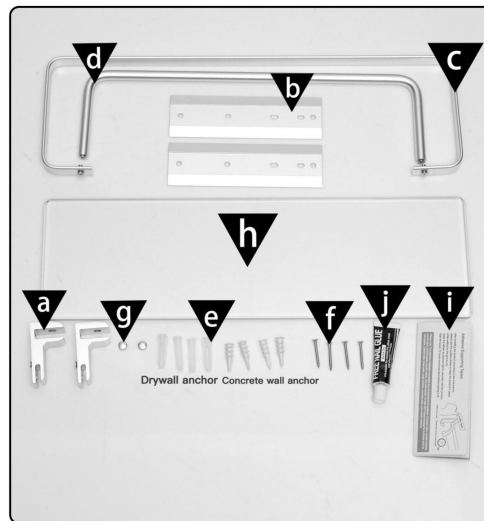
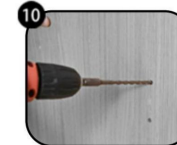


## Installation Manual (B)



9. Mark drill position of another one



10. Drill 6mm holes in to your indicators



11. Use a hammer to drive "e" into the wall



12. Use screws (f) to fasten the bracket to the wall



13. Repeat step 12 on other side



14. Use screw caps (g) to cover the screws



15. Insert the glass (h) into the slot of part (a)

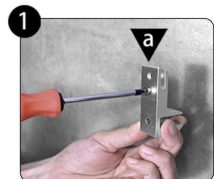


16. Fasten the glass with screws from below

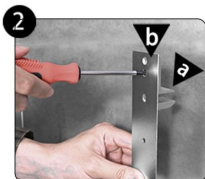
### Adhesive Mounting Instructions

Please note: The adhesive installation is suitable (but not limited to) for surfaces of ceramic tiles, smooth marbles, ground glass, smooth glass, smooth metals, and solid woods. It is also NOT recommended for surfaces such as wall papers, painted walls, limed walls, rough marbles, concrete walls, and uneven surfaces.

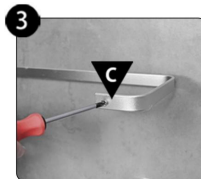
Repeat steps 1 to 7 from drill mounting instructions to assemble it



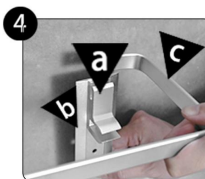
1. Remove the screws from part (a)



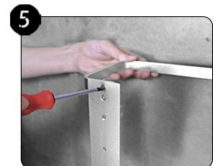
2. Use these screws to fasten parts (a) and (b) together



3. Remove the screws from part (c)



4. Place part (c) in the slot of part (a)



5. Use screw from step 3 to fasten part (c) from the back of part (b)



6. Remove screws from part (d) and align it to the last hole



7. Fasten part (d) from the back of part (b)



8. Mark drill position



1. Spread glue (j) evenly across the back of part (b)



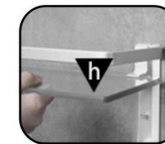
2. Stick onto the wall by applying pressure for about 3 minute



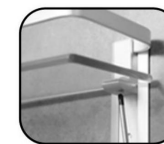
3. Apply two supportive tapes (i) on both side



4. Wait 72 hours for the glue to completely dry

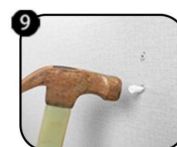
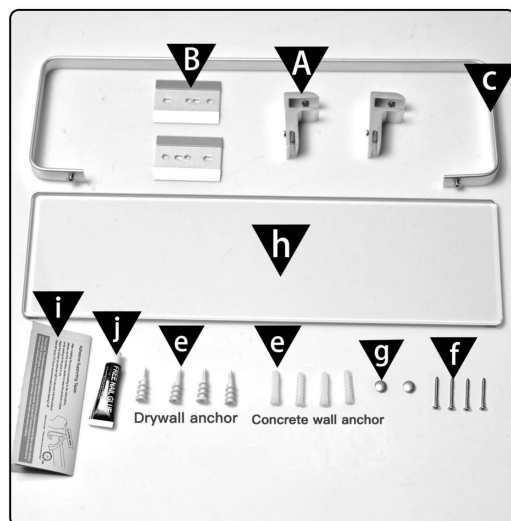


5. Insert the glass (h) into the slot of part (a)



6. Fasten the glass with screws from below

# Installation Manual (A)



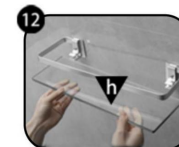
9. Use a hammer to drive anchors (e) into the wall



10. Use screws (f) to fasten the bracket to the wall



11. Use screw caps (g) to cover the screws



12. Insert the glass (h) into the slot of part (A)



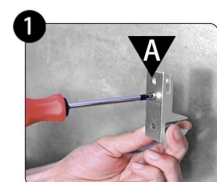
13. Fasten the glass with screws from below

## Adhesive Mounting Instructions

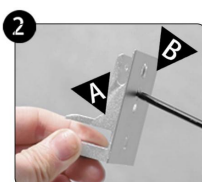
Please note: The adhesive installation is suitable (but not limited to) for surfaces of ceramic tiles, smooth marbles, ground glass, smooth glass, smooth metals, and solid woods. It is also NOT recommended for surfaces such as wall papers, painted walls, limed walls, rough marbles, concrete walls, and uneven surfaces.

Repeat steps 1 to 7 from drill mounting instructions to assemble it

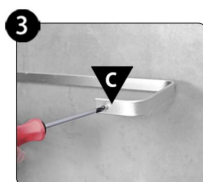
## Drill Mounting Instructions



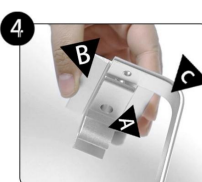
1. Remove the screws from part (A)



2. Use these screws to fasten parts (A) and (B) together



3. Remove the screws from part (c)



4. Place part (c) in the slot of part (A)



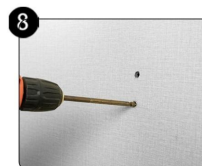
5. Use screw from step 3 to fasten part (c)



6. Mark drill position



7. Mark drill position of another one



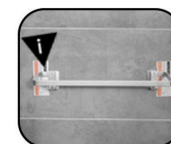
8. Drill 6mm holes into your indicators



1. Spread glue (j) evenly across the back of part (B)



2. Stick onto the wall by applying pressure for about 3 minutes



3. Apply two supportive tapes (i) on both side



4. Wait 72 hours for the glue to completely dry



5. Insert the glass (h) into the slot of part (A)



6. Fasten the glass with screws from below