



Essentials

Keyed YED210



Install Your Lock

Follow the step-by-step Installation Guide in this manual (pages 7-18).

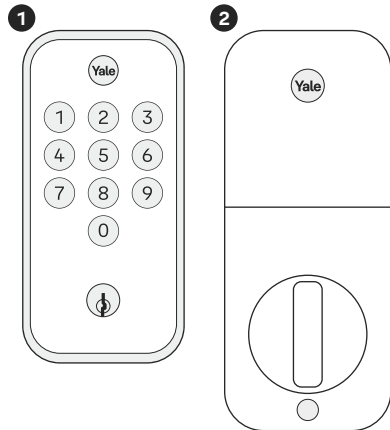
Set Up and Use Your Lock

Create and store up to 20 entry codes, lock with one touch, use Auto-Lock and more (pages 19-27).

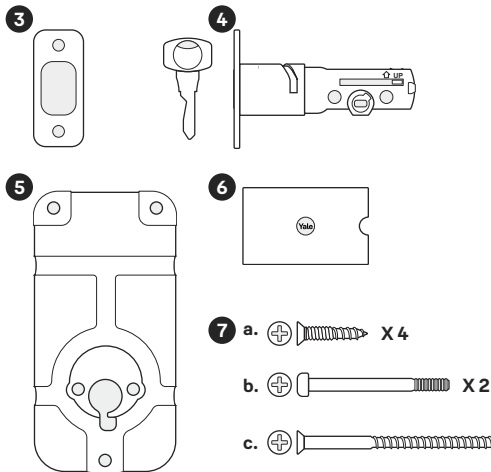
In the Box

2

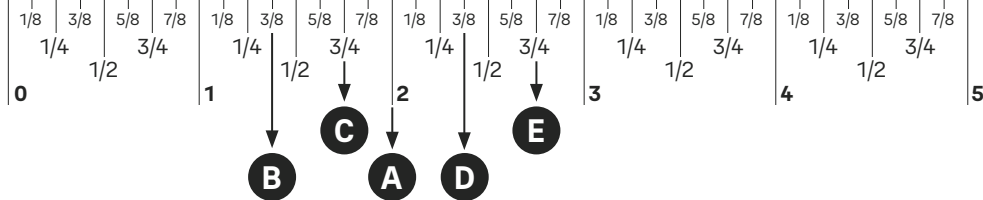
Lock



Hardware



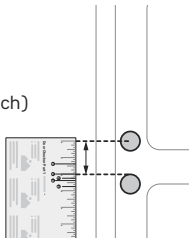
1. Exterior Keypad
2. Interior Lock
3. Strike Plate
4. Adjustable Deadbolt & Key
5. Mounting Plate
6. Manual
7. Screws
 - a. Strike Plate and Deadbolt Screws
 - b. Black Screw Set
 - c. Optional Security Strike Plate Screws



Door Checker Part 1

Measure Clearance

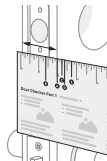
- ✓ Greater than A
- ✗ Less than A
(Your door is not a match)



A. 2" minimum clearance between top of the door knob and center of deadbolt hole.

Measure Door Thickness

- ✓ A, B or C
- ✗ Less than B or greater than A
(Your door is not a match)



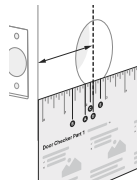
B-C. 1-3/8" - 1-3/4" door thickness; use **black screws** provided.

A. 1-3/4" - 2" door thickness; use 2" screws (sold separately).

See Reverse for Part 2 →

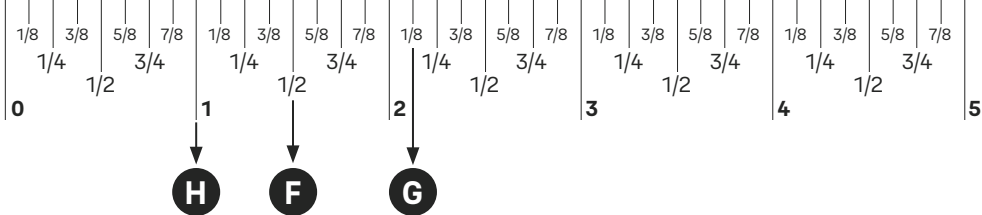
Measure Backset

- ✓ Equals D or E
- ✗ Doesn't equal D nor E
(Your door is not a match)



D. 2-3/8" backset, use out of box latch setting.

E. 2-3/4" backset, adjust latch setting (Step 2, point 1 of this manual).

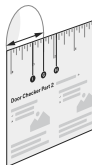


Door Checker Part 2

See Reverse for Part 1 →

Measure Face Bore

- ✓ Equals F or G
- ✎ Less than F
(Adjust diameter to F or G)
- ✗ Greater than G
(Your door is not a match)

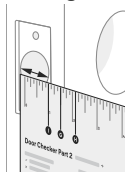


- F.** 1-1/2" face bore diameter.
- G.** 2-1/8" face bore diameter.

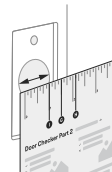
Measure Edge Bore and Strike Pocket

- ✓ Equals H
- ✎ Less than H
(Adjust diameter to H)
- ✗ Greater than H
(Your door is not a match)

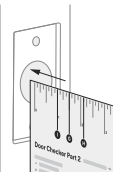
Door (Edge Bore)



Frame (Strike Pocket)



Diameter



Depth

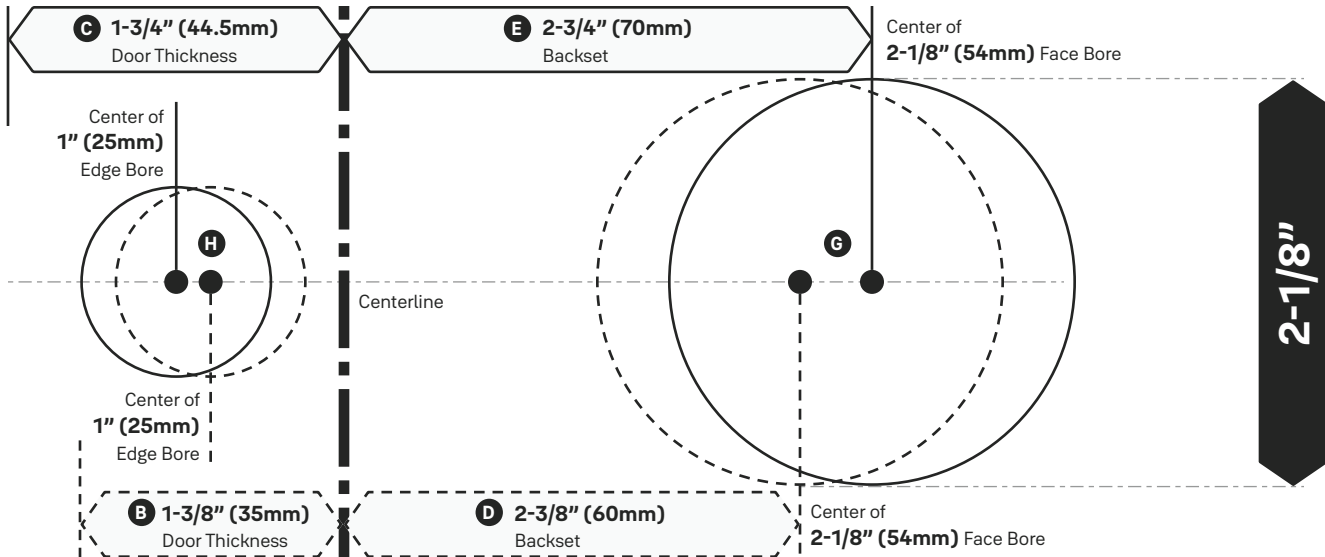
- H.** 1" edge bore diameter;
1" strike pocket diameter and depth.



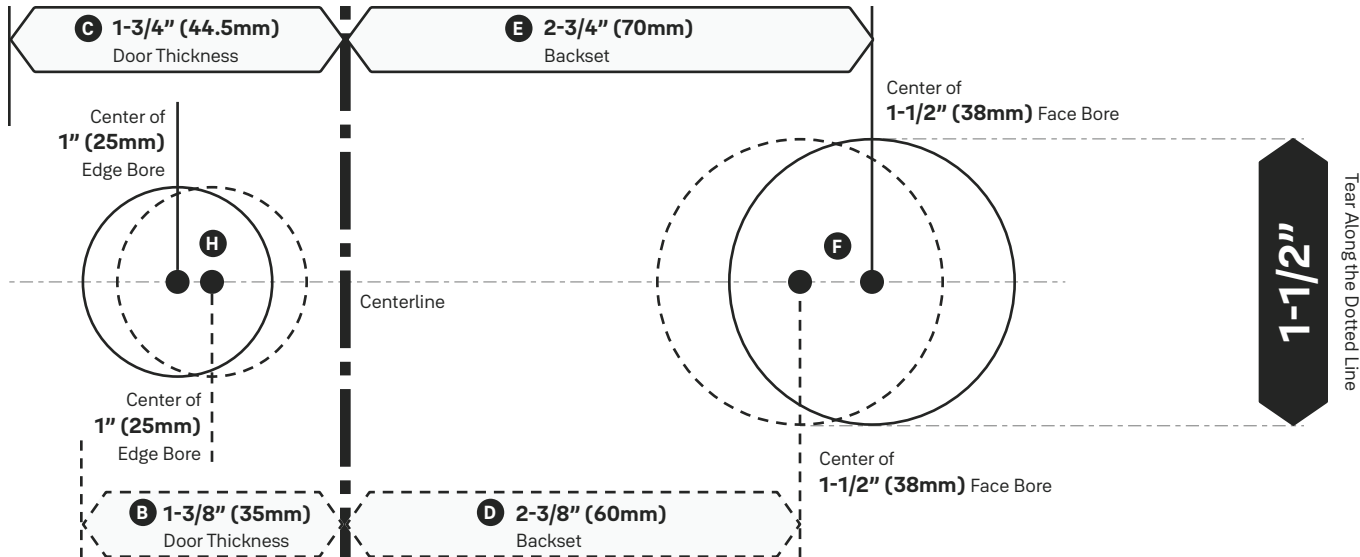
Minimum strike pocket depth is 1".

Marking Template for 2-1/8" (54mm) Face Bore

Tear Along the Dotted Line

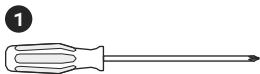


Marking Template for 1-1/2" (38mm) Face Bore

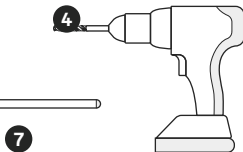
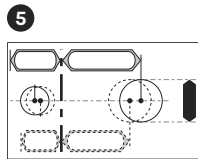
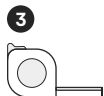


Installation Guide

Required Tools



You Might Also Need



1. **Phillips Head Screwdriver**
2. **Door Checker**
(tear off pages 3-4 of this manual)
3. **Tape Measure**
4. **Drill**
5. **Marking Template**
(tear off pages 5-6 of this manual)
6. **Pencil**
7. **Wood Mortise Chisel**
8. **Utility Knife**
9. **Level**

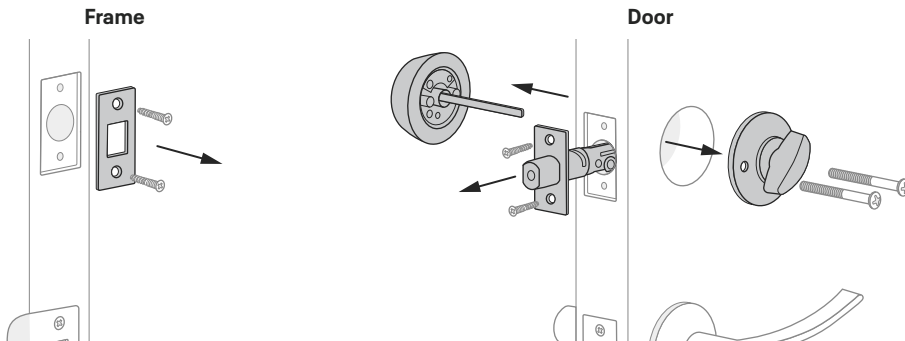


Failure to follow the Installation Guide precisely could result in damage to the product, voiding the factory warranty, and could lead to failure of the product to provide access.

1a Remove Existing Deadbolt

If you have a new door, please proceed to step 1b. →

If you have a deadbolt on your door, use the diagram to help you remove it.

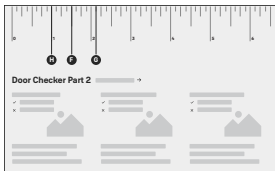
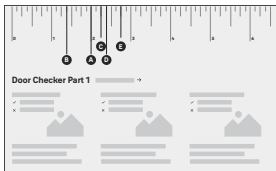


Keep your old deadbolt until your new lock has been successfully installed.

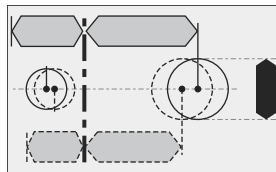
1b Check Door Measurements

If your door doesn't have holes, please proceed to step 1c. →

Tear off the **Door Checker** (pages 3-4) and follow the guidelines on **both sides** to measure each aspect of your door and frame. There are some cases when existing holes cannot be adjusted to be compatible.



✎ If you need to make adjustments, go to **step 1c** and find the closest match to each aspect of your door on the **Marking Template**.



Please do not drill any holes until you confirm that your door is compatible.

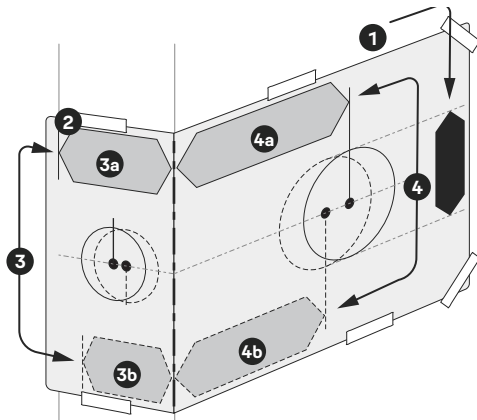
If you have confirmed that the existing holes are compatible with your new lock, please proceed to step 2 (skip step 1c).

1c Make or Adjust Holes

Skip this step if you have confirmed that the existing holes are compatible (step 1b).

1. Tear off the **Marking Template** (pages 5-6), and choose the preferred face bore diameter (**2-1/8"** or **1-1/2"**) on either side of the template.
2. Tape the Marking Template onto the door as shown.
3. Check the door thickness. It should match either the shape with **solid** outlines (**1-3/4"**), or the one with **dashed** outlines (**1-3/8"**).
 - 3a. Use **solid** lines as a template for **1-3/4"** door thickness.
 - 3b. Use **dashed** lines for **1-3/8"** door thickness.
4. Choose your preferred backset. It should match either the shape with **solid** outlines (**2-3/4"**), or the one with **dashed** outlines (**2-3/8"**).
 - 4a. Use **solid** lines as a template for **2-3/4"** backset.
 - 4b. Use **dashed** lines for **2-3/8"** backset.

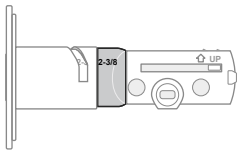
5. Drill holes in your door where marked.



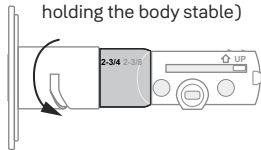
2 Install Deadbolt Latch

1. Correct deadbolt length is based on the backset. Refer to measurements **D** and **E** on the **Door Checker** (page 3) to verify backset.

D 2-3/8" Backset
(Out of box)



E 2-3/4" Backset
(To adjust, twist neck by holding the body stable)



2. Align strike plate with deadbolt latch.

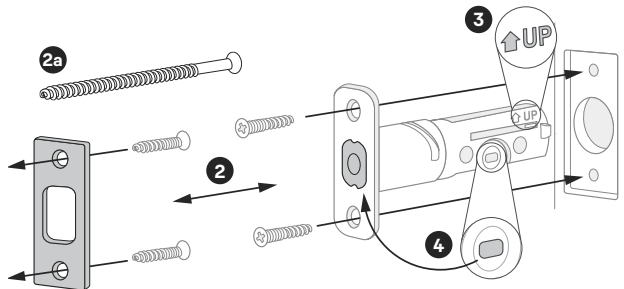
2a. (Optional) Security screws can be used in place of the small strike plate screws.

x 2 for Deadbolt Latch
x 2 for Strike Plate
(Actual size)



3. Make sure UP arrow on the deadbolt is facing upwards.
4. Deadbolt latch must be in an unlocked position.

Note: If the deadbolt latch is extended, use a small flathead screwdriver to rotate slot until deadbolt latch is retracted.



3 Install Exterior Keypad

12

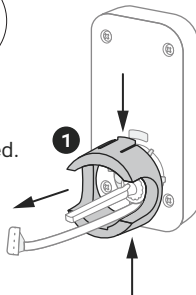
1. Refer to measurement **G** on the **Door Checker** (page 4) to measure face bore hole. If the hole is less than 2-1/8", remove plastic adapter by applying pressure to the tabs on its top and bottom and pulling it off the body of the exterior keypad.



Install your lock with the door open.

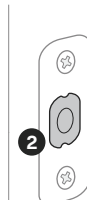
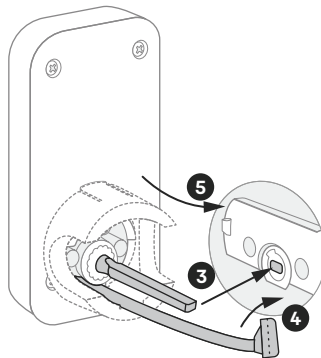
Do not close your door until all the steps are completed.

2. Make sure your deadbolt latch is in an unlocked position. Refer to **step 2, point 4** (page 11) for guidance on how to retract it, if needed.
3. Slide the tailpiece through the deadbolt latch slot.
4. Guide the wire cable under the deadbolt.



YED210-MNL-0038 Rev A

5. Slide the keypad in place, making sure it's on the exterior part of your door.



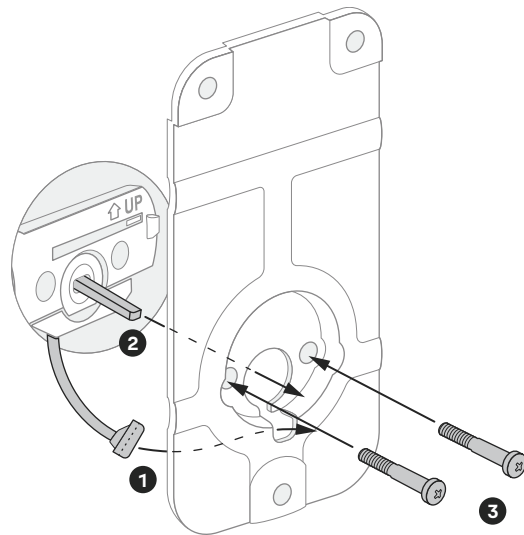
4 Install Mounting Plate

13

1. Route the wire cable into the designated slot in the mounting plate.
2. Slide tailpiece through the designated slot in the mounting plate.
3. Tighten screws with a screwdriver to secure the mounting plate.
As you tighten the screws, make sure the mounting plate and the exterior keypad are straight.

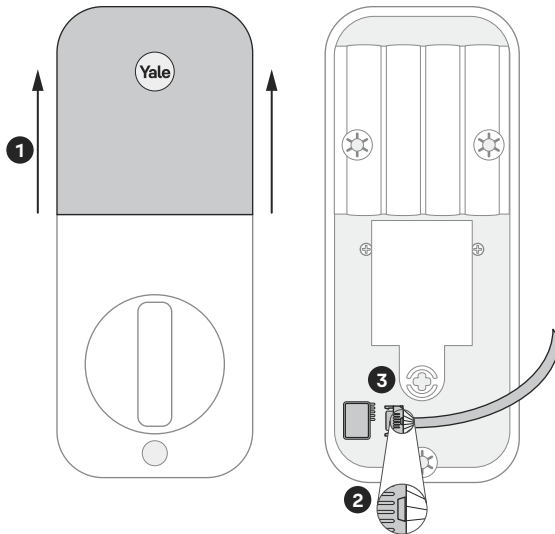


Ensure that the wire cable is not pinched to prevent it from reducing your lock's battery life.



5 Attach Wire Cable to Interior Lock

1. Remove battery cover by pulling it upwards off the body of the interior lock.
2. Make sure the tab on the cable end faces outward.
3. Push cable into the designated slot.



6 Determine Lock Handing

For your lock to function properly, we need to determine which direction to rotate the thumbturn. This is called "lock handing".

1. Look at the drawing to help you determine your hand of door.

2. Find the **Handing toggle** on the interior lock with the battery cover off and make sure it corresponds with your hand of door.

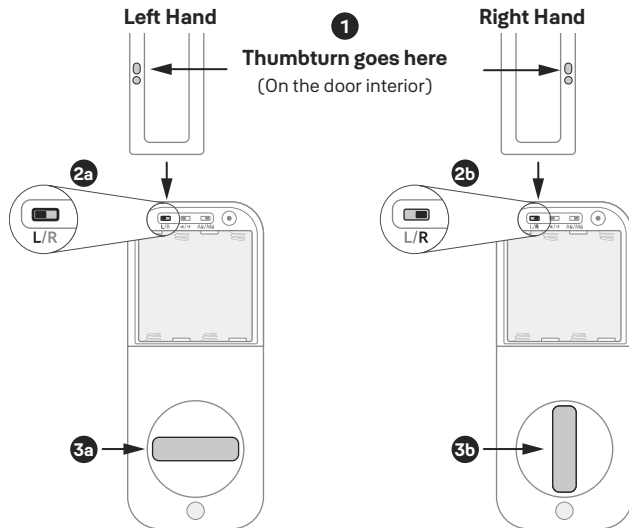
2a. L stands for **left hand**.

2b. R stands for **right hand**.

3. Position the thumbturn to match the handing of the door.

3a. For left handing, position thumbturn **horizontally**.

3b. For right handing, position thumbturn **vertically**.

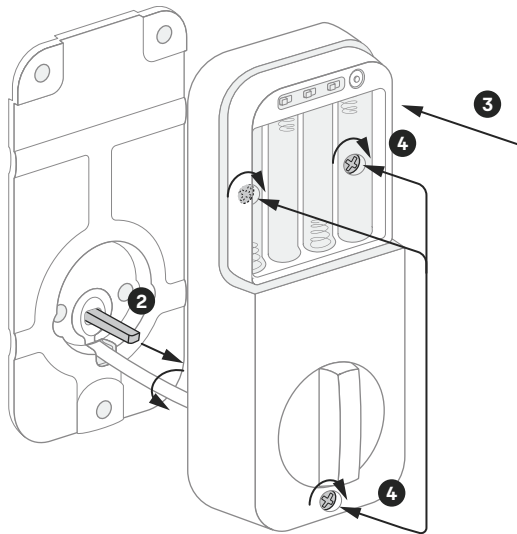


7 Install Interior Lock

1. Make sure thumbturn is positioned correctly for your hand of door. Refer to **step 6** (page 15) for guidance on how to determine it, if needed.
2. Slide the tailpiece through the designated slot on the back of the thumbturn.
3. Press the lock against the mounting plate.
4. Tighten the three pre-installed screws. When fully tightened, lock should be flush to door.



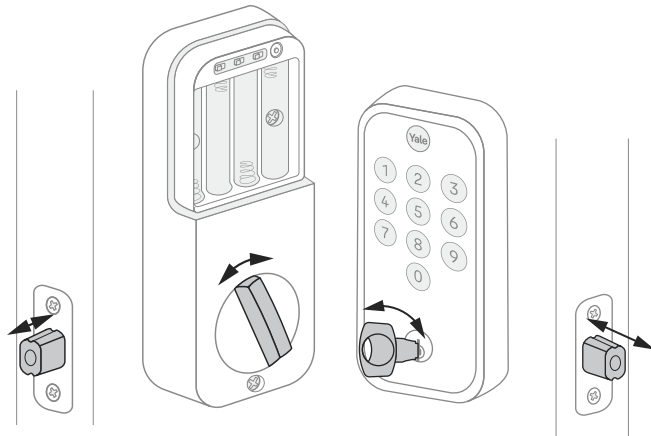
Ensure that the wire cable is not pinched to prevent it from reducing your lock's battery life.



8 Test Thumbturn and Key

If deadbolt latch does not lock or unlock with the **key** (from the outside) or the **thumbturn** (from the inside):

- Ensure that the deadbolt latch is centered in the face bore hole;
- Ensure that the tailpiece is inserted through deadbolt latch slot (step 3, point 3) into the thumbturn slot (step 7, point 2).



Smooth deadbolt latch operation will enhance your battery life.

9 Install Batteries* and Set Up an Entry Code

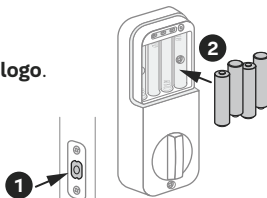
18

1. Before installing batteries, make sure the deadbolt latch is unlocked.
2. Install 4 AA batteries*.
3. Once batteries are inserted, the entire keypad will light up and the status LED will turn yellow. Once this happens, your lock has entered Setup Mode and you can create your first entry code.

Note: If the yellow LED turns off, simply press the Yale logo to reenter Setup Mode.

4. Create your first entry code.

4a. Enter a **4-8 digit code**, then press the **Yale logo**.



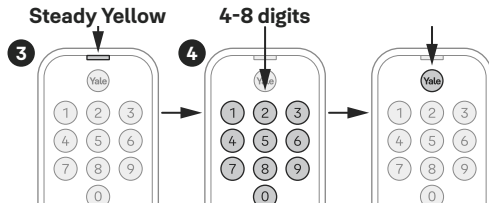
* Batteries are not included

YED210-MNL-0038 Rev A

- 4b.** **Re-enter** the code, then press the **Yale logo**. If the code matches the one from step 4a, the status LED will flash green and you will hear a long beep.

Note: Entry code will be saved and the lock will then switch to Normal Mode. See p.21 for instructions on how to create additional entry codes.

5. Replace battery cover.



Using Your Lock

Exterior Keypad



To **lock** your door

Press **Yale**

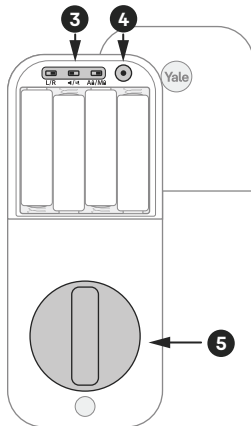
To **unlock** your door

Press **Yale** →

Enter entry code →

Press **Yale**

Interior Lock



1. **Status LED Indicator**
2. **Wake / One-Touch Locking**
3. **Toggle Features***
 - a. Lock Handling
 - b. Audio Mode
 - c. Auto-Lock
4. **Mode Button**
5. **Thumbturn**

* See p.24 for more information

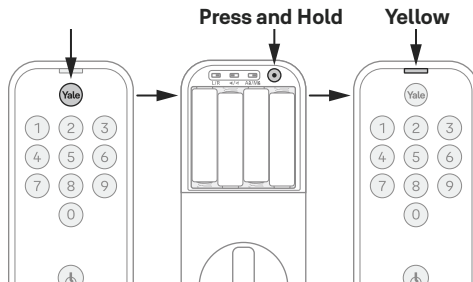
LED Alerts

Status LED turns steady yellow	Initial Setup Mode
Status LED turns steady green	Create Additional Entry Code Mode
Status LED turns steady red	Remove Entry Code Mode
Status LED flashes green	Success
Status LED flashes red	Failure

Factory Reset

20

Press the **Yale logo** to wake up the lock, then **press and hold the Mode button** under the battery cover on the interior side until the status LED turns yellow and you hear a beep (roughly for 3 seconds). Lock has been factory reset and you can set up your first entry code. See step 9, point 4 (p.18) for instructions.



Create Additional Entry Codes

← See step 9, point 4 (p.18) for instructions on how to set up your first entry code.

You can store up to 20 entry codes that are 4-8 digits long.

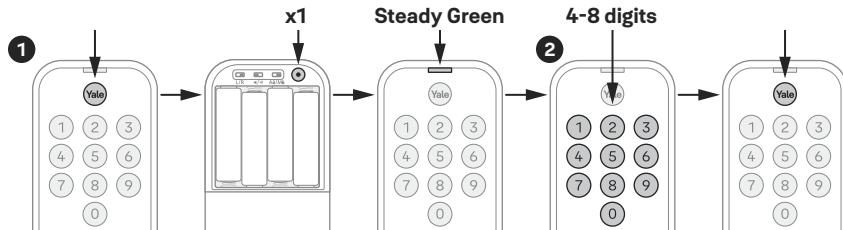
1. Press the **Yale logo**, then press the **Mode button** under the battery cover on the interior side **once**. The status LED will turn **steady green**.

2. Create and entry code.

2a. Enter a **4-8 digit code**, then press the **Yale logo**.

2b. **Re-enter** the code, then press the **Yale logo**. If the code matches the one from step 2a, the status LED will flash and you will hear a long beep.

Note: Entry code will be saved and the lock will then switch to Normal Mode.



YED210-MNL-0038 Rev A



Each entry code must be 4-8 digits long.

Delete Entry Codes

1. Press the **Yale logo**, then press the **Mode button** under the battery cover on the interior side **twice**. The status LED will turn **steady red**.

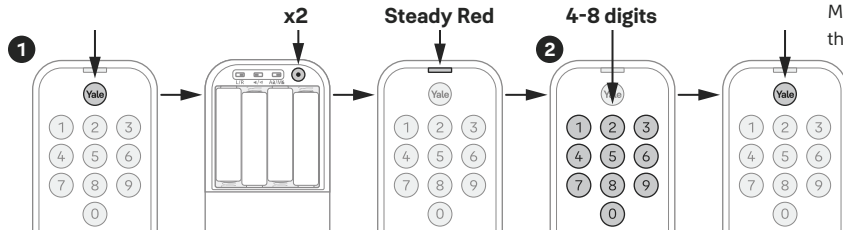
2. Delete a previously saved entry code.

2a. Enter a previously saved **4-8 digit code**, then press the **Yale logo**.

2b. **Re-enter** the code, then press the **Yale logo**. If the code matches the one from step 2a, the status LED will flash and you will hear a long beep.

Note: Entry code will be deleted and the lock will then switch to Normal Mode.

Note: If you delete the last or the only saved code, the status LED will turn steady yellow indicating that the lock has entered Setup Mode. See step 9, point 4 (p.18) for instructions on how to set up the first entry code.



Hidden Entry Code

If you think someone might be watching you enter your entry code, you can “hide” it by combining it with random numbers, and your door will still unlock. Follow these steps:

1. Press the **Yale logo** to wake up the lock.
2. Type in random numbers before, after, or both before and after the actual code.



Example: Your actual code is 1234. Type in random numbers before and after the actual code so it looks like this: 154686**1234**8569423.

3. Press the **Yale logo** again, and your door will unlock.

Entry Codes	<ul style="list-style-type: none"> • Entry Codes are used to unlock your door. Each entry code must be 4-8 digits long. • Store up to 20 entry codes. 		
Hidden Entry Code	<ul style="list-style-type: none"> • Hide your entry code among random numbers if you think someone might be watching you. See p.23 for more information. 		
Toggle Features (On the interior lock under the battery cover)	Lock Handing	Default: R	<ul style="list-style-type: none"> • Determine which direction (right or left) your deadbolt turns to lock. See p.15 for more information.
	Audio Mode	Default: Enabled	<ul style="list-style-type: none"> • Play audio when the lock is operated.
	Auto-Lock	Default: Disabled	<ul style="list-style-type: none"> • Automatically lock the deadbolt after its been unlocked for 30 seconds.
One Touch Locking	<ul style="list-style-type: none"> • Lock your door with one touch by pressing the Yale logo on the lock. 		
Invalid Code Lockout	<ul style="list-style-type: none"> • The keypad will be disabled for 60 seconds after five consecutive invalid codes. • After 60 seconds, you may reenter the correct code. 		

Lock Operations Troubleshooting

25

Lock does not respond.	<ul style="list-style-type: none">• Press the Yale logo to activate the keypad.• Verify contact with the logo.• Check batteries are installed and oriented correctly in battery case. Replace batteries if needed.• Check that the keypad wire is fully connected and not pinched.
Lock does not respond – door is locked and inaccessible.	<ul style="list-style-type: none">• Batteries may not have enough power. Replace batteries.• Use mechanical key to unlock the door.
Lock is on for a while then shows no reaction. LED indicator dims.	<ul style="list-style-type: none">• Batteries do not have enough power. Replace batteries.
Lock chimes indicating code acceptance but door will not open.	<ul style="list-style-type: none">• Check for any foreign objects between door and frame.• Check that the wire is firmly connected to the interior lock.
Lock responds "Low Battery".	<ul style="list-style-type: none">• Replace all four (4) batteries with new AA alkaline batteries.

Lock Operations Troubleshooting

Entry code will not register.	<ul style="list-style-type: none">• If low battery indicator is lit, change batteries.• Verify that your entry code consists of 4 to 8 digits.• Entry code must be entered while the keypad is in Setup Mode. For the first entry code, press Yale logo to re-enter Setup Mode. For additional entry codes, see p.21.
Upon entering an entry code and pressing the Yale logo, the status LED indicator turns red or lock times out without responding.	<ul style="list-style-type: none">• Verify entered code is a valid, previously programmed, 4 to 8 digit code.
Deadbolt does not extend when locking the door with the keypad.	<ul style="list-style-type: none">• Lock was not handed properly. Switch the toggle for "L/R" on the interior lock under the battery cover.
Lock operates but makes no sound.	<ul style="list-style-type: none">• Check if the toggle for Audio Mode on the interior lock under the battery cover is set to "Disabled".

Hardware Troubleshooting

27

Deadbolt grinds and will not extend to lock when using an entry code but thumbturn locks and unlocks smoothly.

- Lock was not handed properly. Switch the toggle for "L/R" on the interior lock under the battery cover.

Deadbolt is hitting the strike plate.

- Reposition the strike plate to align with deadbolt.

Deadbolt is not fully extending.

- Increase depth of the deadbolt strike pocket in the frame. Make sure that the strike pocket depth is at least 1".

Resistance when locking deadbolt that requires pushing or pulling on the door to align deadbolt and latch.

Adjust your existing knob, lever, or handleset strike plate. Latch engagement into the strike is the main component used for door alignment.

To adjust knob / lever / handleset strike plate:

1. Remove plate from door frame with a hand screwdriver. Note: Using an electric driver may strip screw heads or enlarge screw holes.
2. Locate tab on strike plate. Bend the tab towards surface of strike. Note: A small change may be all that is required.
3. Reinstall strike plate using a screwdriver and test again.
4. If door cannot be adjusted sufficiently with strike tab, both knob/lever/handleset latch and deadbolt could require adjustment – we suggest you contact a local locksmith for assistance.

For help with misalignments, watch our door alignment video: US.YaleHome.com/Support

This device complies with part 15 of the FCC Rules. Operation is subject to the following two conditions: (1) This device may not cause harmful interference, and (2) this device must accept any interference received, including interference that may cause undesired operation.

Warning:

Changes or modifications to this device, not expressly approved by **Yale Home** could void the user's authority to operate the equipment.

Yale Home

24/7 Support: 1-855-213-5841 • US.YaleHome.com

Yale® is a registered trademark of Yale Home. Other products' brand names may be trademarks or registered trademarks of their respective owners and are mentioned for reference purposes only. ©Copyright 2023. All rights reserved. Reproduction in whole or in part without the express written permission of Yale Home is prohibited.

YED210-MNL-0038 Rev A

Trusted Every Day