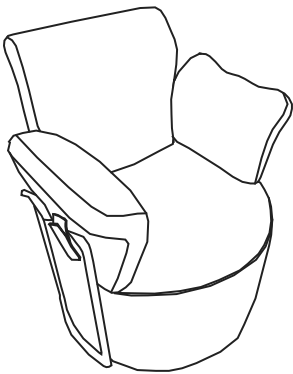


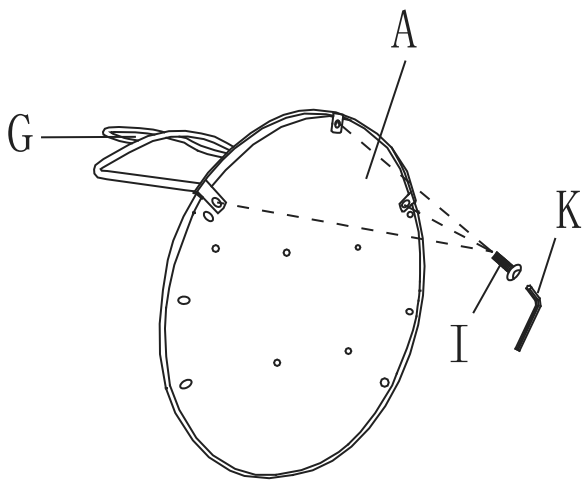
# ASSEMBLY INSTRUCTION



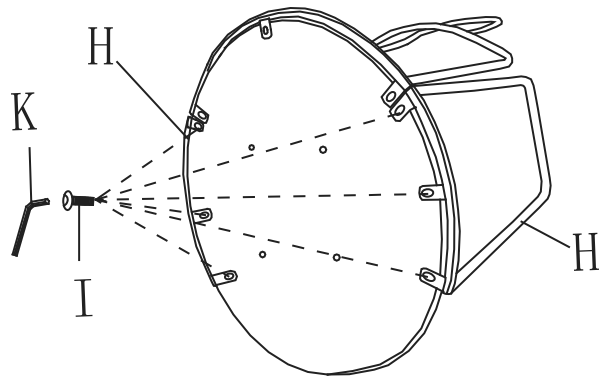
## PARTS LIST

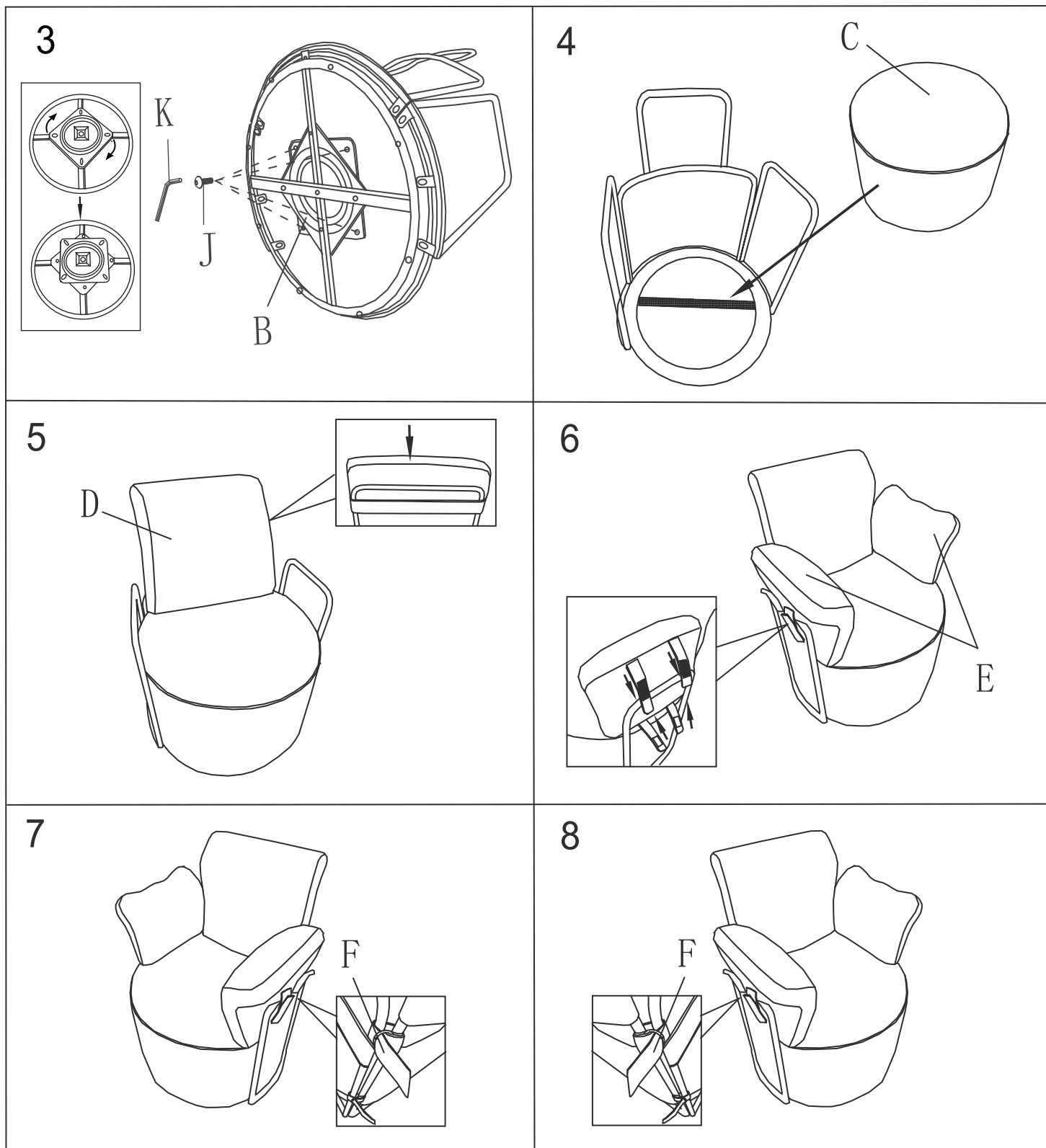
A×1	B×1	C×1	D×1	E×2	F×4
G×1	H×2	I×9+1 M6*20	J×4 M6*16	K×1	

1



2

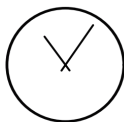
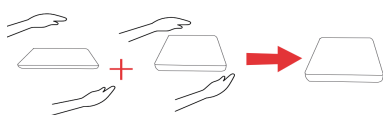




Tips: 1. Please do not 100% tighten all the bolts until the chair is fully assembled, just 50% is OK, make it has space to adjust the chair.

2. Knead your cushion like giving your cushion a massage while allowing the air to flow through the foam.

3. Repeatedly tap the sides and front and back to make it rebound better and fluffy.



**72h**

It might takes up to 72 hours.

4. The suggestion is that it is best to assemble the chair with two people.

5. Before installing the chair, lay a cloth on the floor or install it on the carpet to prevent the chair from scratching.