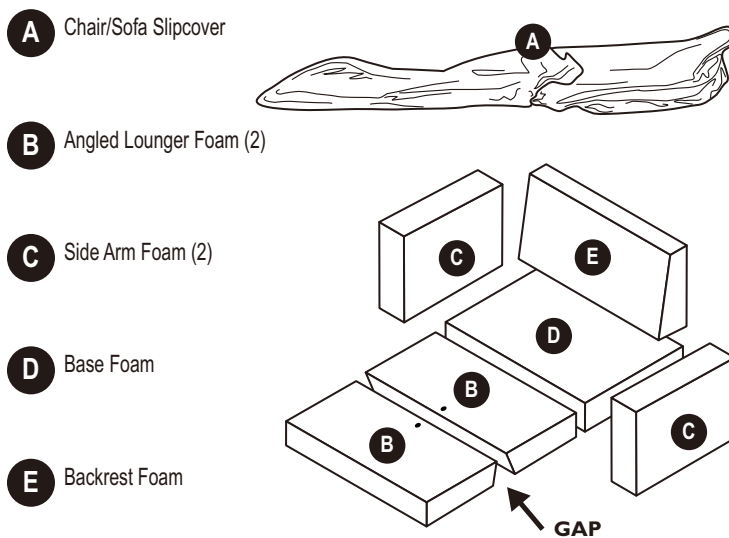


Convertible Chair/Sofa

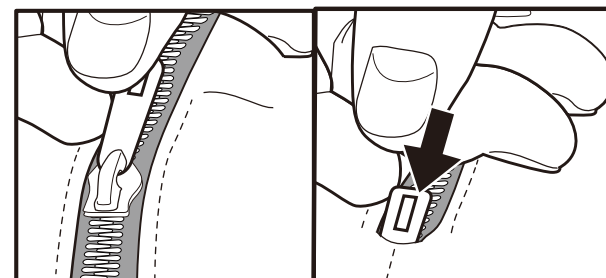
Instruction Manual

PARTS / FOAM LAYOUT

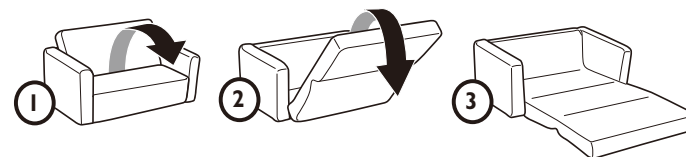


OPENING / CLOSING SLIPCOVER

- Zip/Unzip all the way to open and close.



CHAIR/SOFA TO LOUNGER



⚠ WARNING:

- **FOR CHILDREN AGES 18 MONTHS AND UP.**
- **Suffocation Hazard!**
- **NEVER** use with infants who cannot sit up or get in and out of the product unassisted
- Child can roll over and get head and face entrapped against soft side of product and suffocate

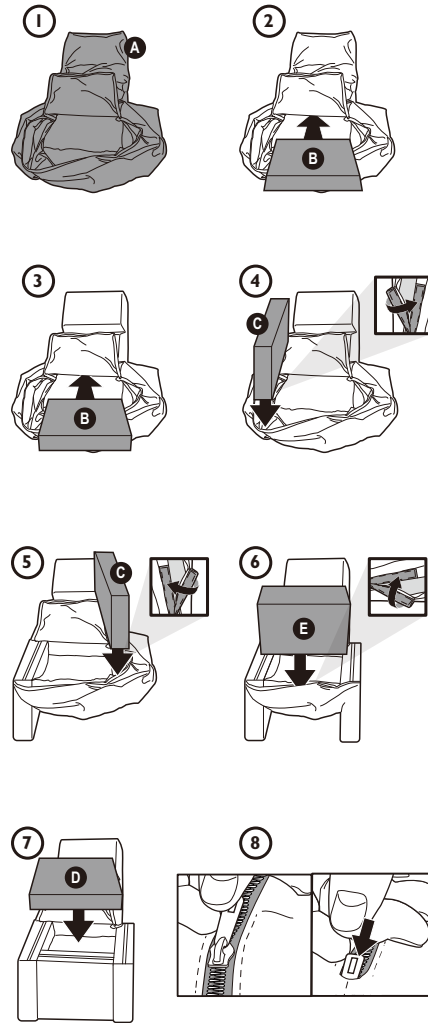
Please read the following instructions and warnings carefully.
KEEP THIS INSTRUCTION MANUAL FOR FUTURE REFERENCE.
DO NOT use this product if it is damaged or broken.

PLEASE NOTE:

When exposed to air, the inner foam turns from white to yellow.
Important to leave the gap at the bottom.

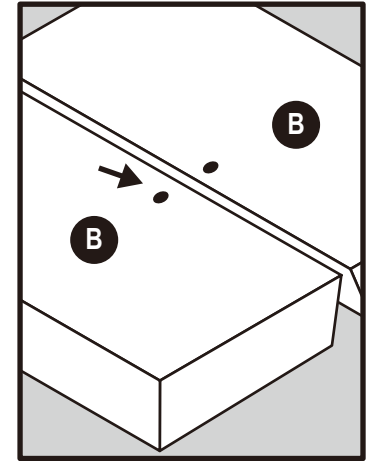
FOAM ASSEMBLY CHAIR/SOFA

- 1 Place Slipcover (A) on a flat level surface with opening facing up.
- 2 Insert one Angled Lounger Foam (B) into Slipcover (A). Important that Ink Dots are facing down and gap will be facing up.
- 3 Insert second Angled Lounger Foam (B) into Slipcover (A). Important that Ink Dots are facing down and gap will be facing up.
- 4 Insert one Side Arm Foam (C). Close Side Arm pocket using hook and loop.
- 5 Insert second Side Arm Foam (C). Close Side Arm pocket using hook and loop.
- 6 Insert Backrest Foam (E). Angled side faces forward. When inserting, top faces down and base faces up. Close Backrest pocket using hook and loop.
- 7 Insert Base Foam (D).
- 8 Finish by zipping all the way until closed.



ANGLED FOAM INK DOTS

- When placing the Angled Lounger Foam (B) into the slipcover, the Ink Dots should be side-by-side facing down.
- The gap will be facing up when inserting into slipcover.



CARE INSTRUCTIONS

Cold Water, Gentle Cycle, NO BLEACH,
NO IRONING. Regular Detergent,
Tumble Dry Low Heat or Air Dry

