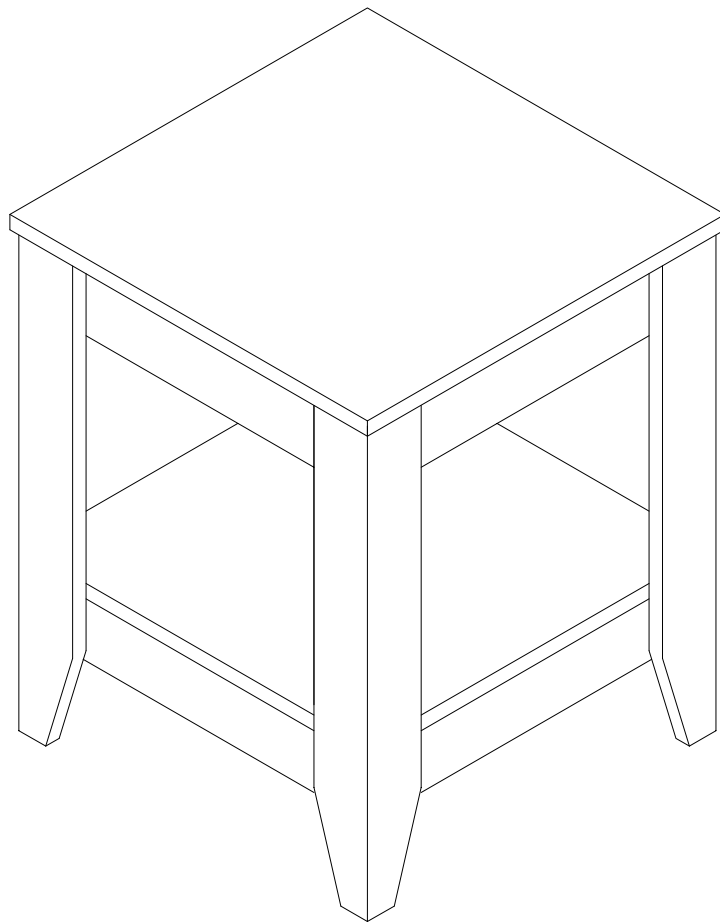


Night Stand
Assembly Instructions
Contains One Night Stand and Hardware



Night Stand

Contains One (1) Night Stand and Hardware

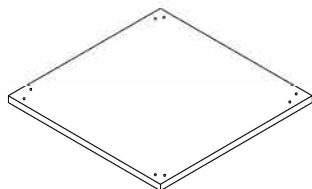
IMPORTANT NOTE:

Carefully remove all the parts from the box. Arrange on a flat surface and verify you have all of the following parts and hardware

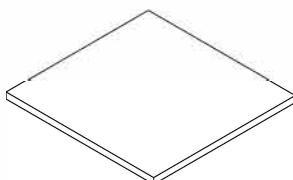
TOOLS REQUIRED:
-Phillips Screwdriver

PARTS LIST

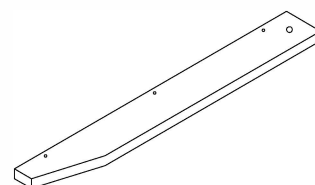
1.Top Panel (1 PC)



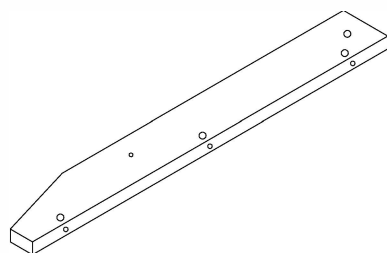
2.Middle Panel (1 PC)



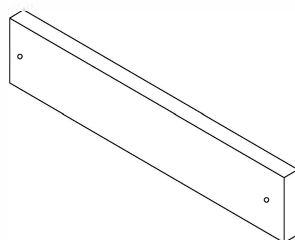
3.Left Leg Panel (4 PCS)



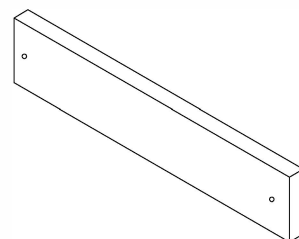
4.Right Leg Panel (4 PCS)



5.Short Apron (4 PCS)

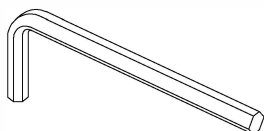


6.Long Apron (4 PCS)

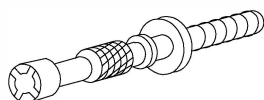


HARDWARE LIST

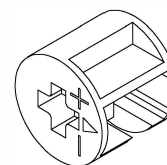
A.Allen Key (1 PC)



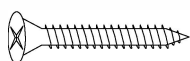
B.Minifix Bolt (24 PCS)



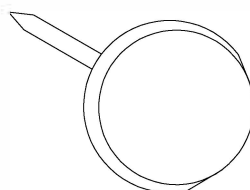
C.Minifix House (24 PCS)



D.Screw 30mm (16 PC)



E.White Nail (8 PCS)



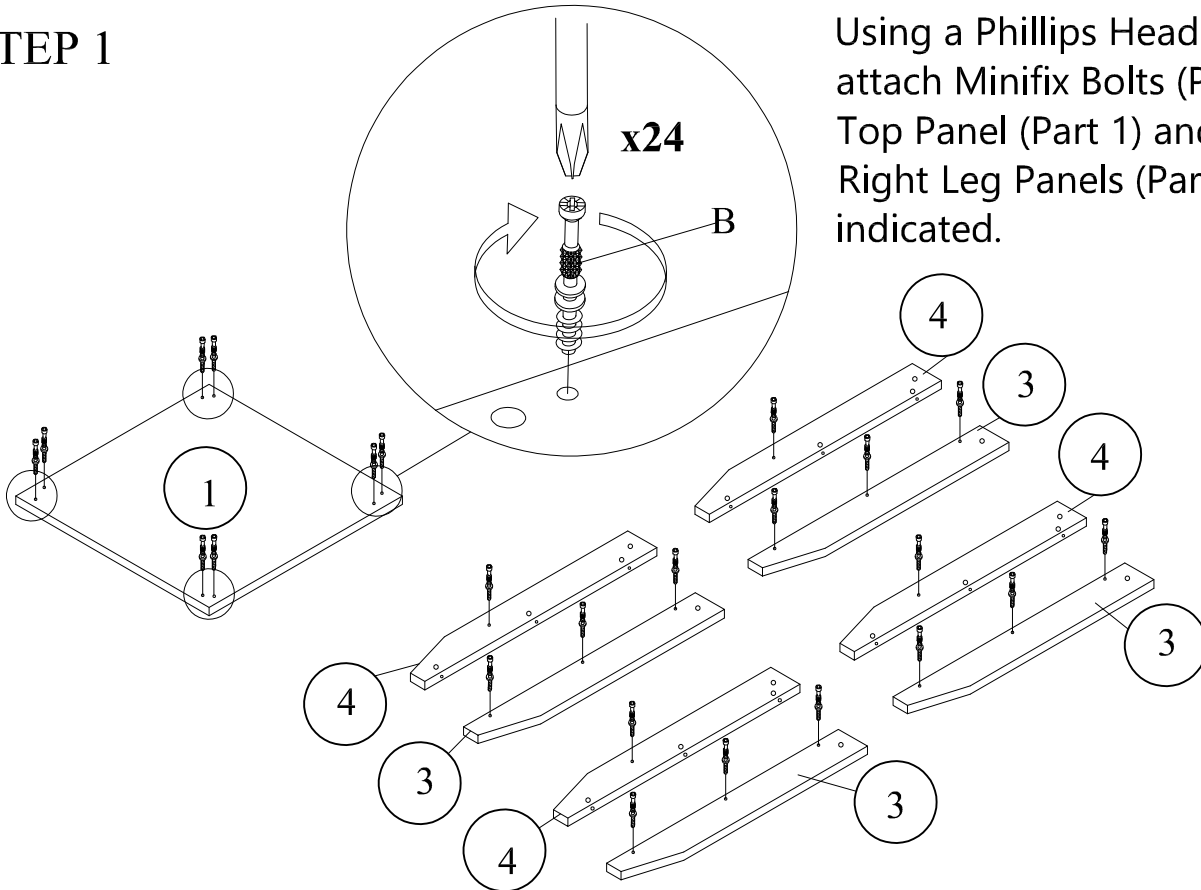
F.Minifix Cap (24 PCS)



ASSEMBLY INSTRUCTIONS

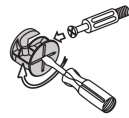
STEP 1

Using a Phillips Head Screwdriver, attach Minifix Bolts (Part B) to the Top Panel (Part 1) and Left and Right Leg Panels (Parts 3 and 4) as indicated.



STEP 2

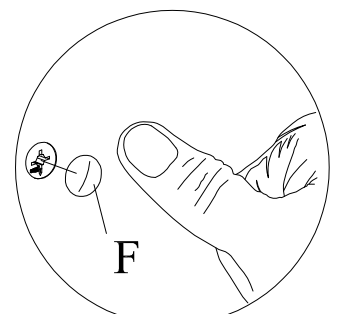
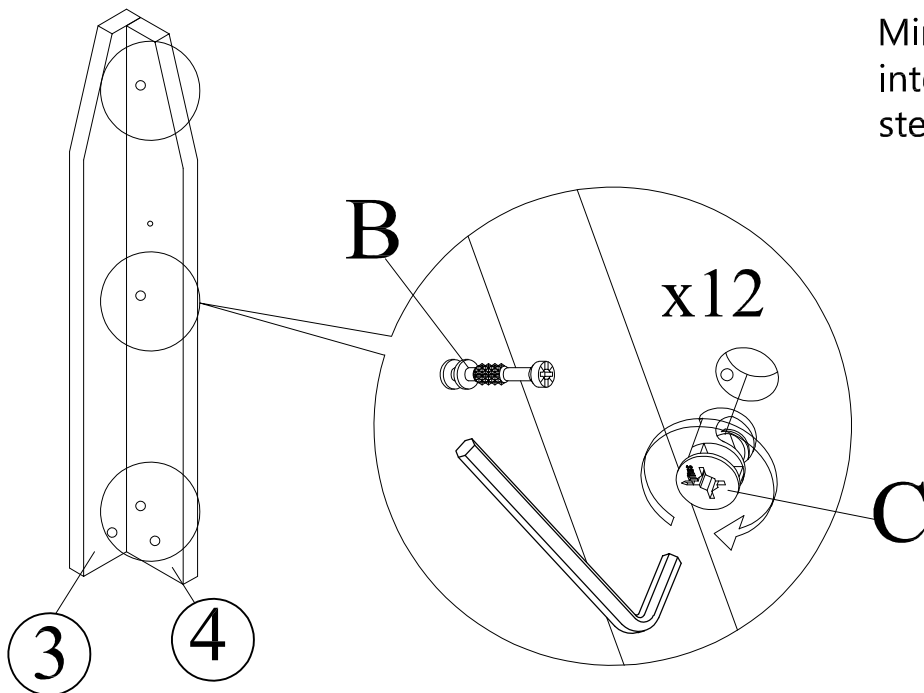
This is how a mini fix works...



The head of the mini fix housing goes into the open mouth of the mini fix bolt. You then turn the mini fix housing so it tightens over the mini fix bolt.

Attach the Left legs (Part 3) to the Right legs (Part 4) as shown. Turn the Minifix House (Part C) to tighten using the Allen Key.

Cover the Minifix House using the Minifix Cap (Part F) by pressing it into the Minifix House. Repeat the step 4 times.

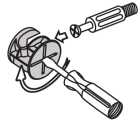


**Attach Minifix Cap as shown.*

ASSEMBLY INSTRUCTIONS

STEP 3

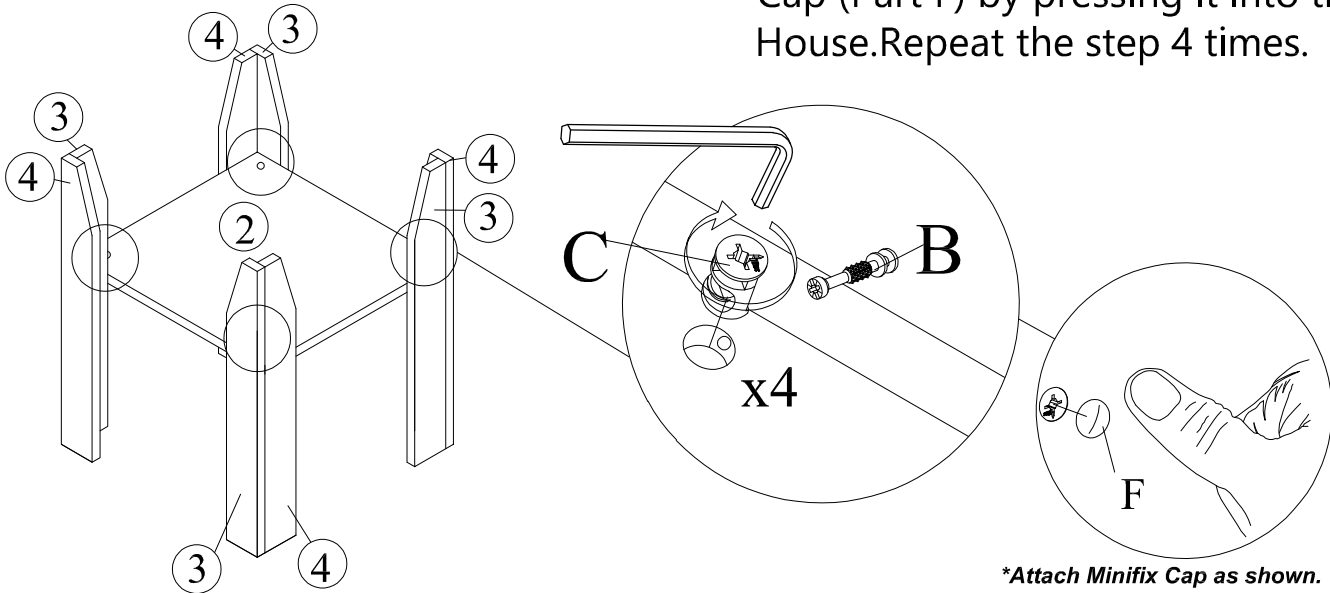
This is how a mini fix works...



The head of the mini fix housing goes into the open mouth of the mini fix bolt. You then turn the mini fix housing so it tightens over the mini fix bolt.

Attach the the legs to Middle Panel (Part 2) as shown. Turn the Minifix House (Part C) to tighten using the Allen Key.

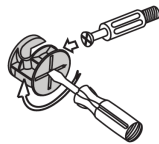
Cover the Minifix House using the Minifix Cap (Part F) by pressing it into the Minifix House. Repeat the step 4 times.



**Attach Minifix Cap as shown.*

STEP 4

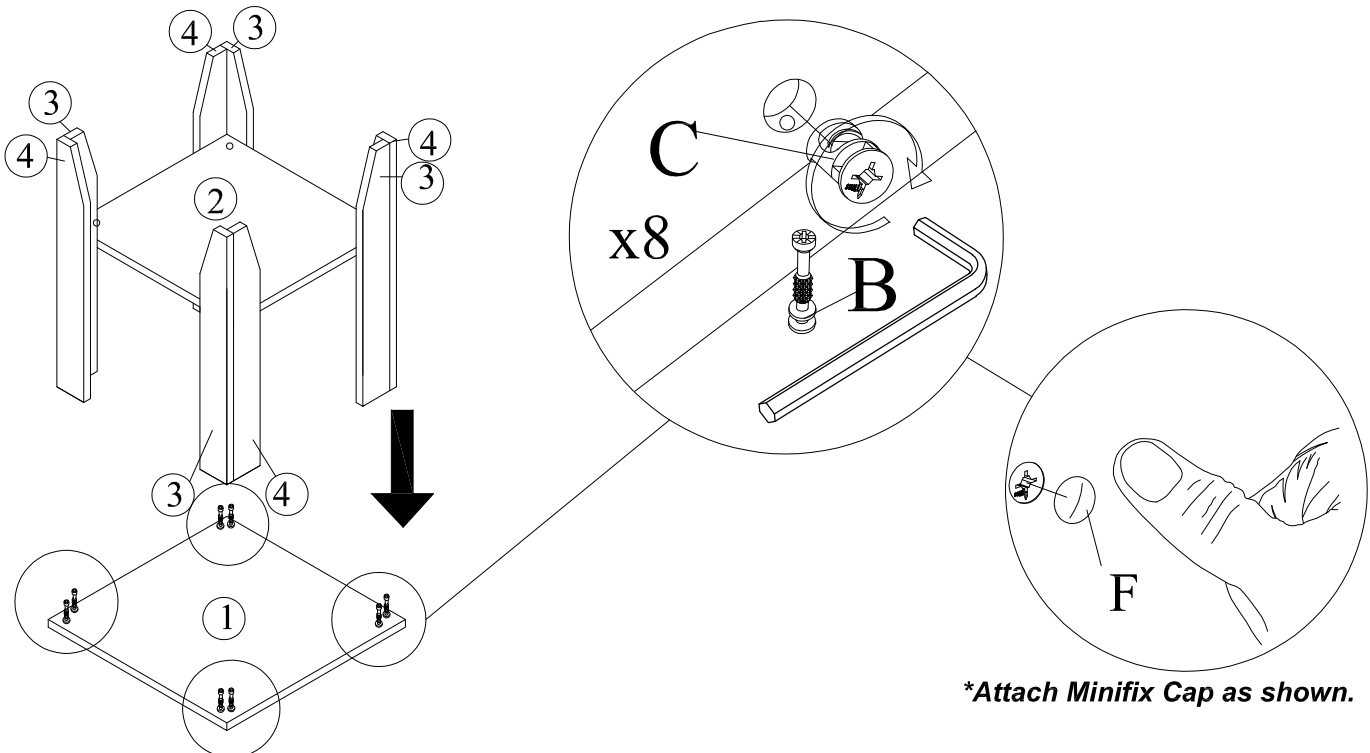
This is how a mini fix works...



The head of the mini fix housing goes into the open mouth of the mini fix bolt. You then turn the mini fix housing so it tightens over the mini fix bolt.

Attach the Top Panel (Part 1) to the legs as shown. Turn the Minifix House (Part C) to tighten using the Allen Key.

Cover the Minifix House using the Minifix Cap (Part F) by pressing it into the Minifix House.

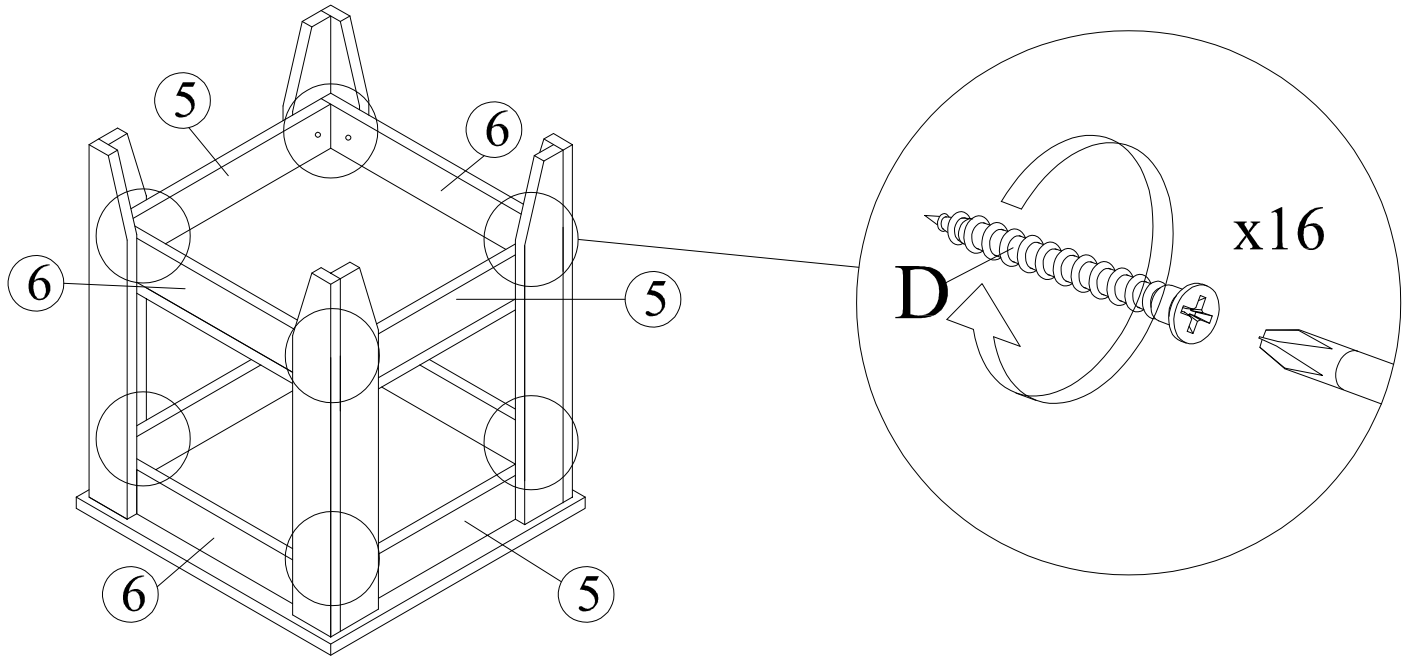


**Attach Minifix Cap as shown.*

ASSEMBLY INSTRUCTIONS

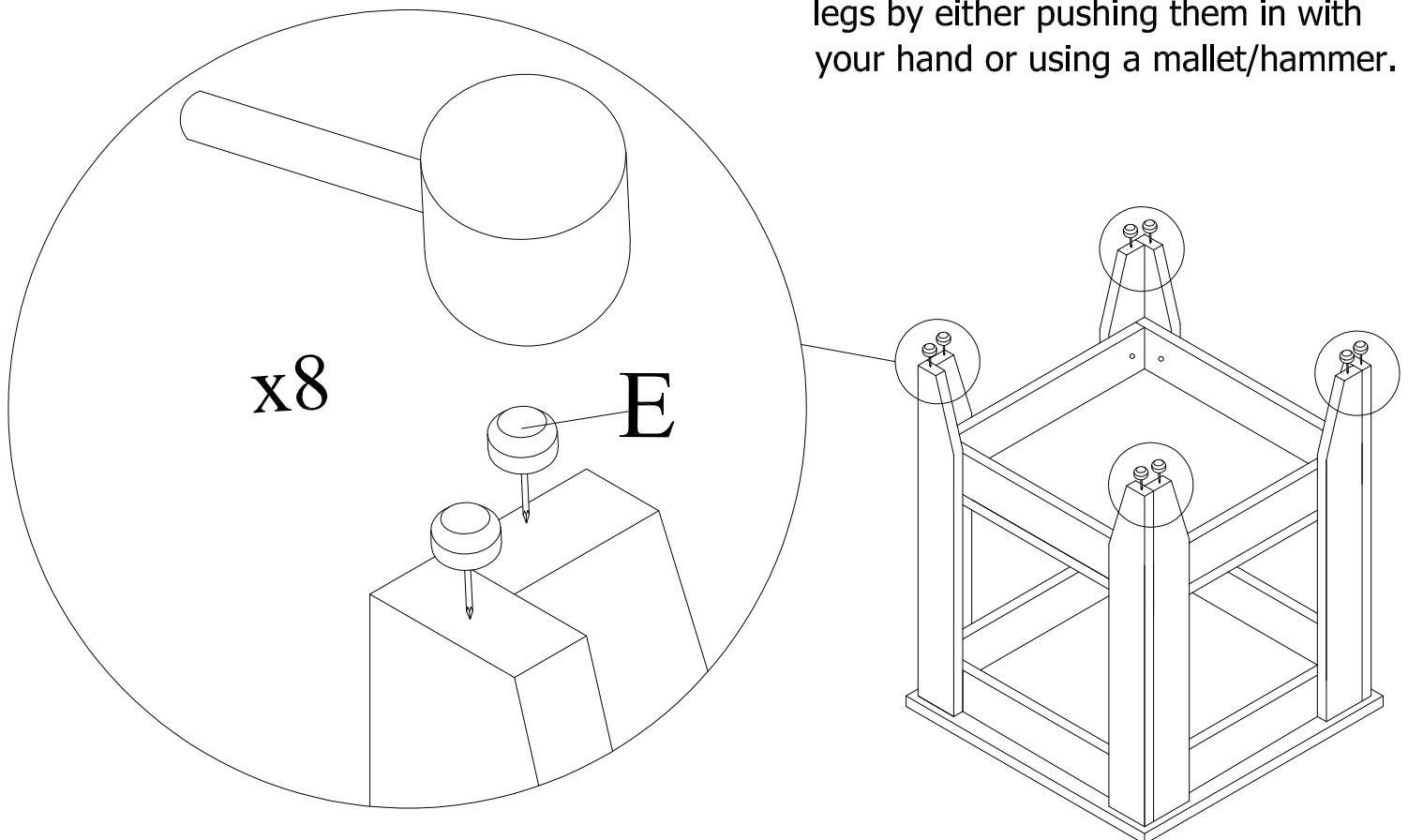
STEP 5

Attach the short and long Apron (Part 5,6) and tighten using screw 30mm (Part D).



STEP 6

Attach the White Nail (Part E) to the legs by either pushing them in with your hand or using a mallet/hammer.



ASSEMBLY INSTRUCTIONS

YOUR NIGHTSTAND IS NOW READY FOR USE

