

INSTRUCTION MANUAL ENCLOSED

ATTENTION

**IF YOU HAVE ANY PROBLEMS OR QUESTIONS, EMAIL OR CALL
CUSTOMER SERVICE BEFORE YOU RETURN THIS PRODUCT TO THE
STORE WHERE IT WAS PURCHASED.**

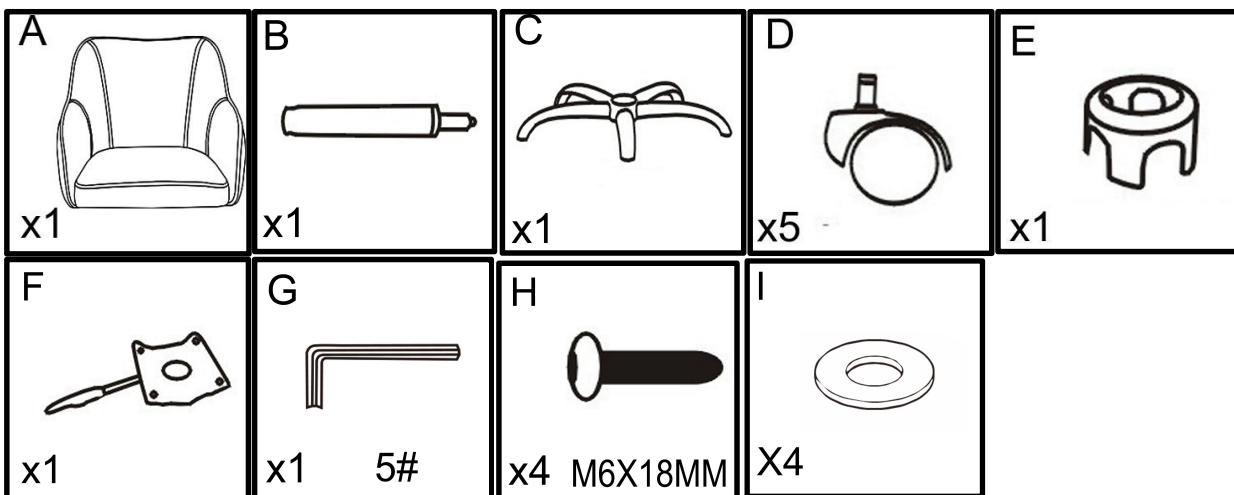
INSTRUCTION MANUAL ENCLOSED

INDOOR ACCENT CHAIR

INDOOR ACCENT CHAIR ASSEMBLY INSTRUCTION



Part	DESCRIPTION	Quantity
PARTS LIST		
<i>PARTS</i>		
A	Seat	1
B	Gas lift	1
C	Base	1
D	Wheel	5
E	Decorations	1
F	Chassis	1
<i>HARDWARE</i>		
G	Allen Key	1
H	Screws	4
I	Washer	4



PLEASE READ AND FOLLOW ALL SAFETY TIPS

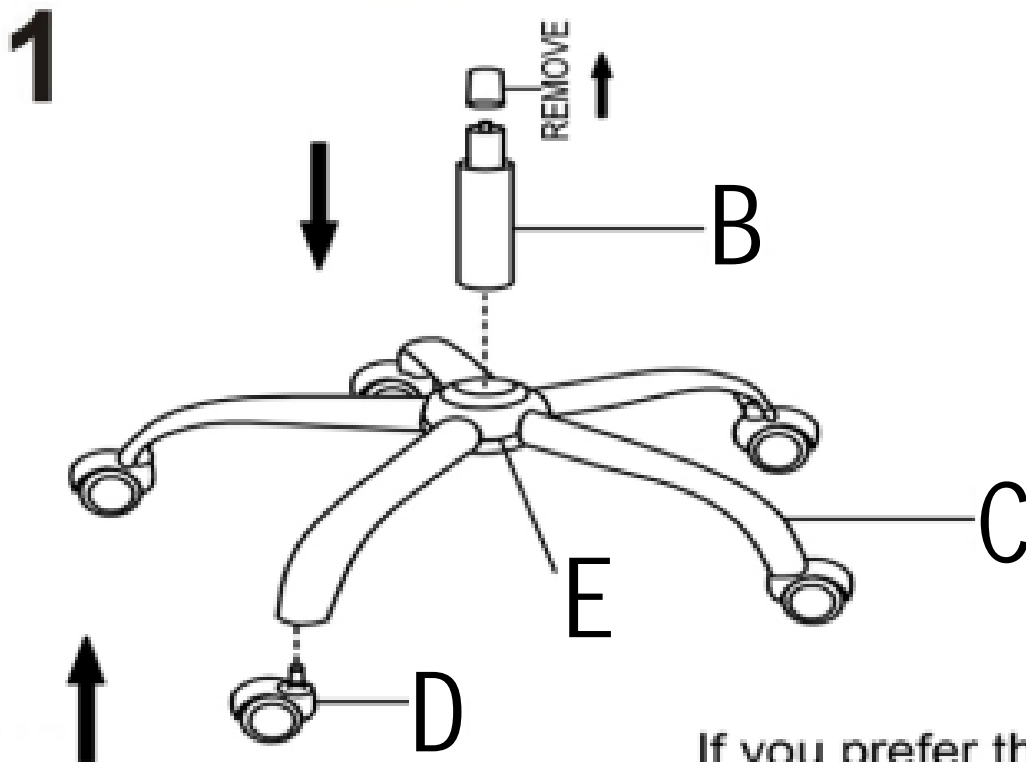
GETTING STARTED

1. Before assembly, CAREFULLY use scissors or utility knife to cut and unwrap all parts. Make sure you do not discard the hardware.

Warm Tips:

1. The plastic covers on some metal parts are just for product protection. Please remove it before assembly.
2. Please follow the sequence of AI during assembly.
3. Do not tighten the screws until all of them are in right positions.

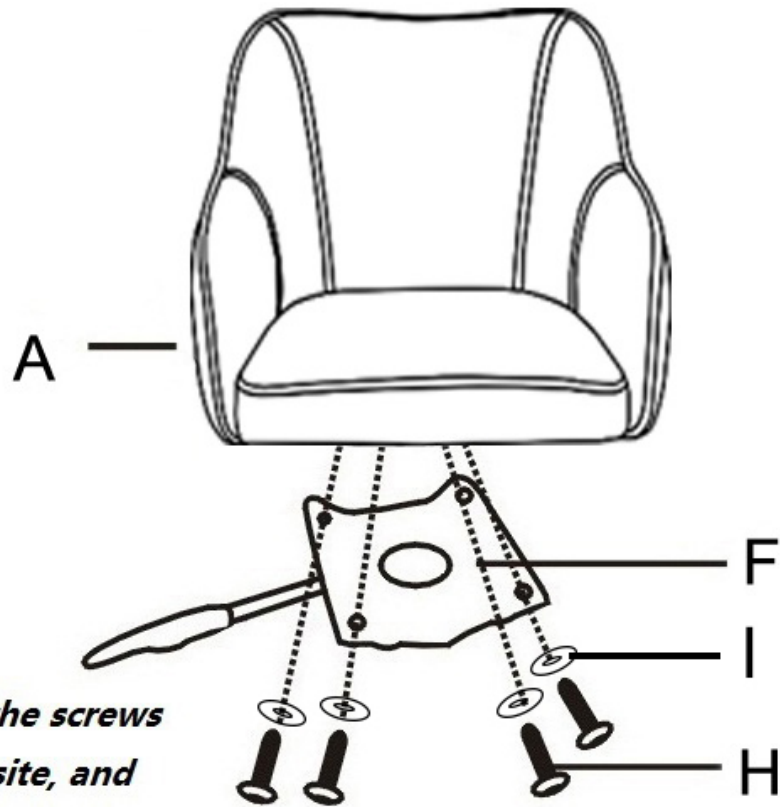
1. As shown in the picture.



If you prefer the silver cover (E), please replace it by yourself.

2.As shown in the picture.

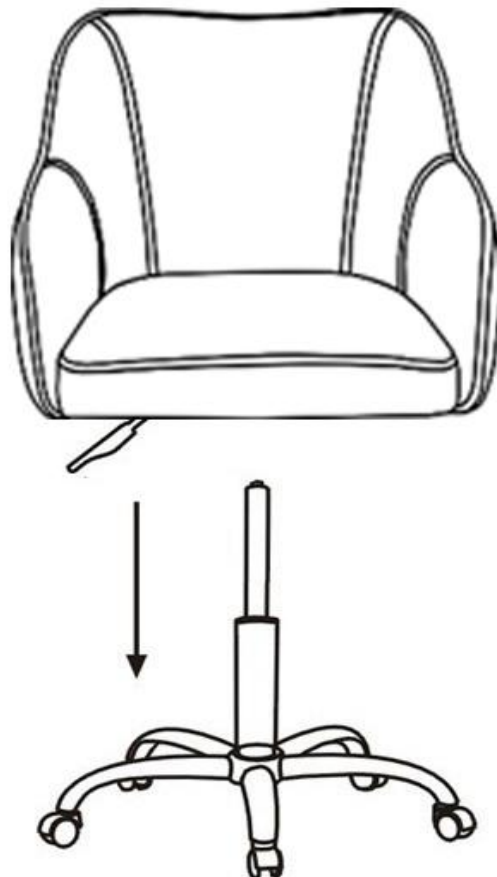
2

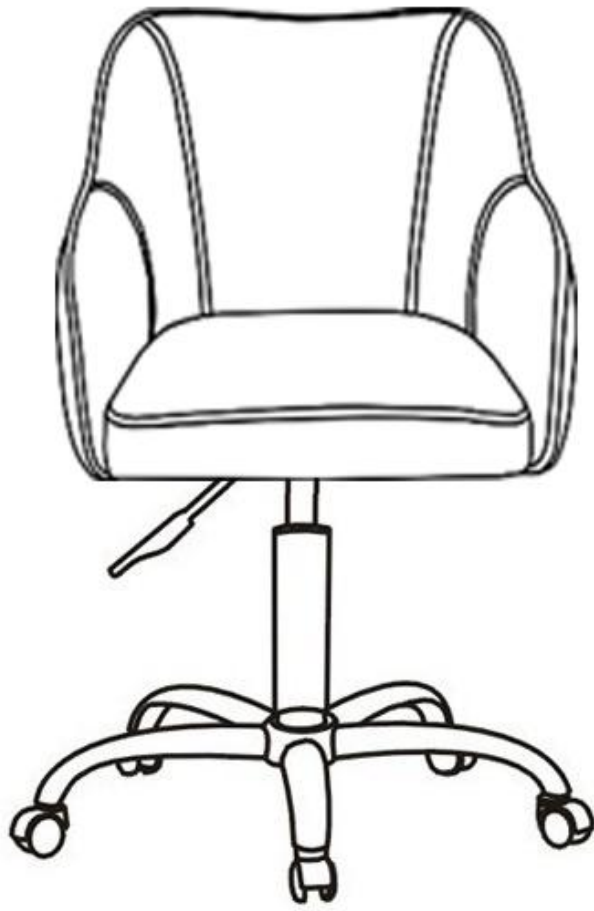


Note: Put all the screws into the hole site, and then tighten them.

Do not tighten one by one

3





Till now you have finished the whole assembly and enjoy your furniture!