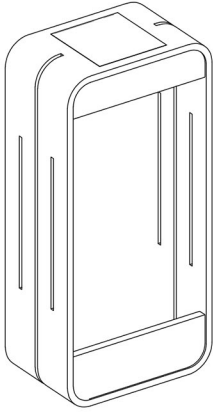


# Owner Manual



# PARTS

A\*1



Fixture

# HARDWARE

①\*2

②\*2



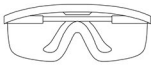
Expansion  
screw

Screw

# TOOLS REQUIRED



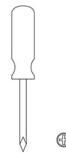
LADDER



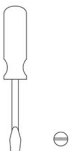
SAFETY  
GOGGLES



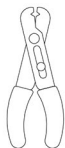
ELECTRICAL  
TAPE



PHILLIPS  
SCREWDRIVER



FLATHEAD  
SCREWDRIVER



WIRE  
CUTTER



WIRE  
STRIPPER

# ATTENTION

Please inspect the wires before installation, if the wire shows any cut or abrasion, or has exposed copper wires, **DO NOT** use the fixture, it might be caused during transportation or defect product.

Before starting installation of the fixture, please remove the previous fixture (if any).

Disconnect the power by turning off the electric break for your property (Please ask for professional help if needed).

# MAINTENANCE AND WARNING

Verify the lamp model suits the environment (indoor/outdoor, IP rating) and check all accessories (body, screws, cord, manual).

Only use with bulbs of the recommended type and wattage. Exceeding the maximum wattage may cause overheating or fire.

Do not install the fixture if any part is damaged or missing. Contact the manufacturer or seller for replacement parts.

The fixture may become hot during use. Allow to cool before handling.

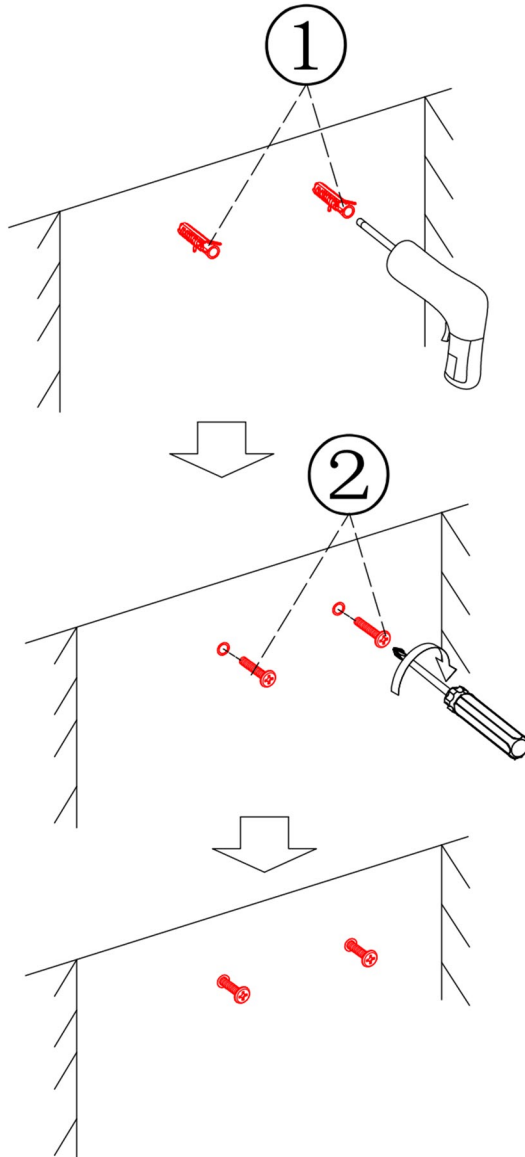
Clean dust accumulation in recessed lamps regularly (to prevent overheating), but only when powered off; never rinse with water.

If the fixture includes a dimmer switch, ensure it is compatible with the fixture before installation.

Do not modify the fixture in any way; tampering with electrical components can result in malfunction or risk of fire.

# step 1 ---Install Bolts to the Wall

First, drill and secure the expansion bolts into the wall, ensuring they are perfectly aligned in height. Then, use a screwdriver to drive in the screws that will be used to mount the wall lamp.



# step 2 ---Hang the Lamp

Hang the wall lamp on the installed screws according to the diagram.

