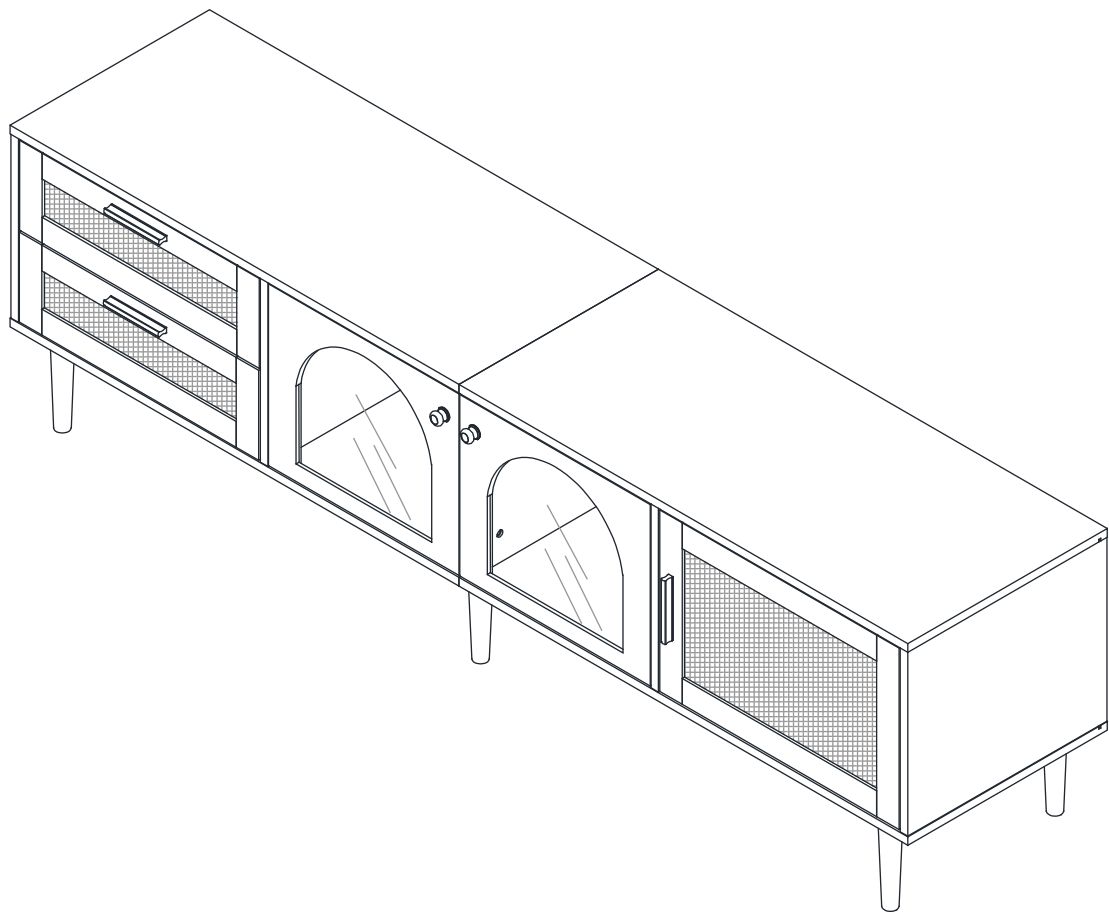


# TV STAND

## *USER MANUAL*



***SAVE THESE INSTRUCTIONS FOR FUTURE USE***

**PLEASE DO NOT RETURN TO STORE**



**Please do not return this product to the retailer!!  
We are able to assist you in ANY way**

If you find that you have any trouble with assembly or missing or damaged parts please contact the seller.

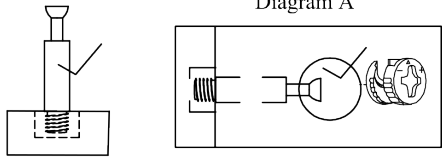
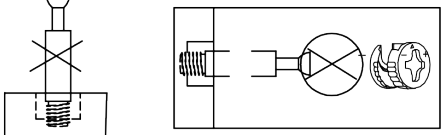
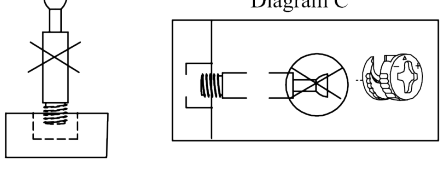
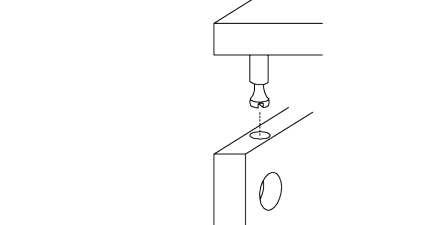
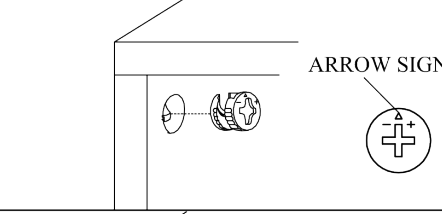
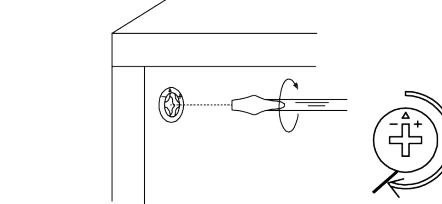
# Before Installation

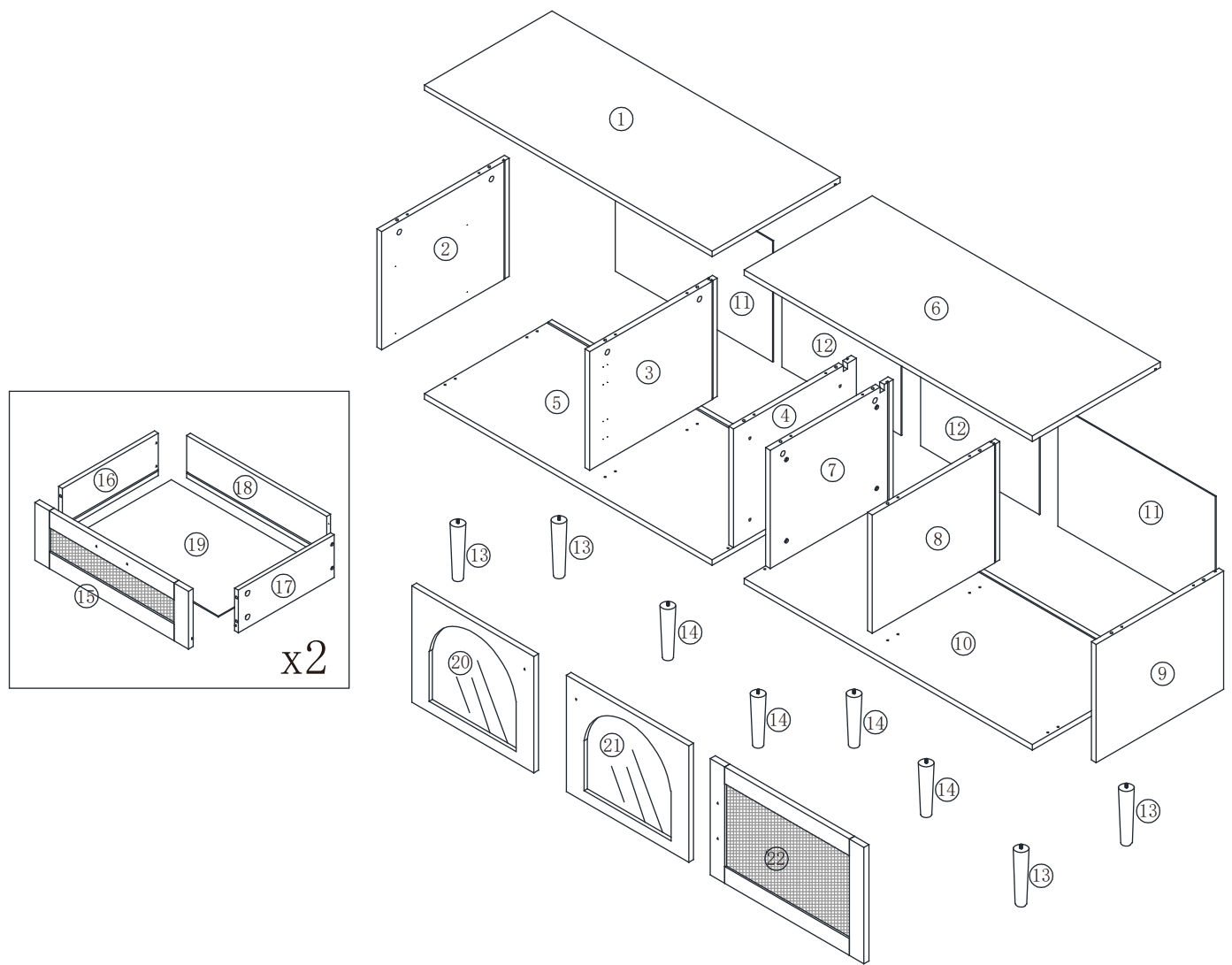
**Important – Please read these instructions fully before starting assembly**

Thank you for purchasing this quality product. Be sure to check all packing materials carefully for small parts, which may have come loose inside the carton during shipment. Identify and count all items according to the PARTS LIST and/or HARDWARE LIST shown below. Check you have all the components and tools listed on the following pages.

- We recommend that you assemble this product with the assistance of another person; this will make the assembly easier, and will help eliminate damage to the product or injury to persons during assembly.
- Please do not over tighten screws or bolts until the assembly is completed.
- Keep children and animal away from the work area, small parts could choke if swallowed.
- Please put all parts on a non-abrasive floor before assembly, and follow the assembly steps to assemble your newly purchased product correctly and efficiently.

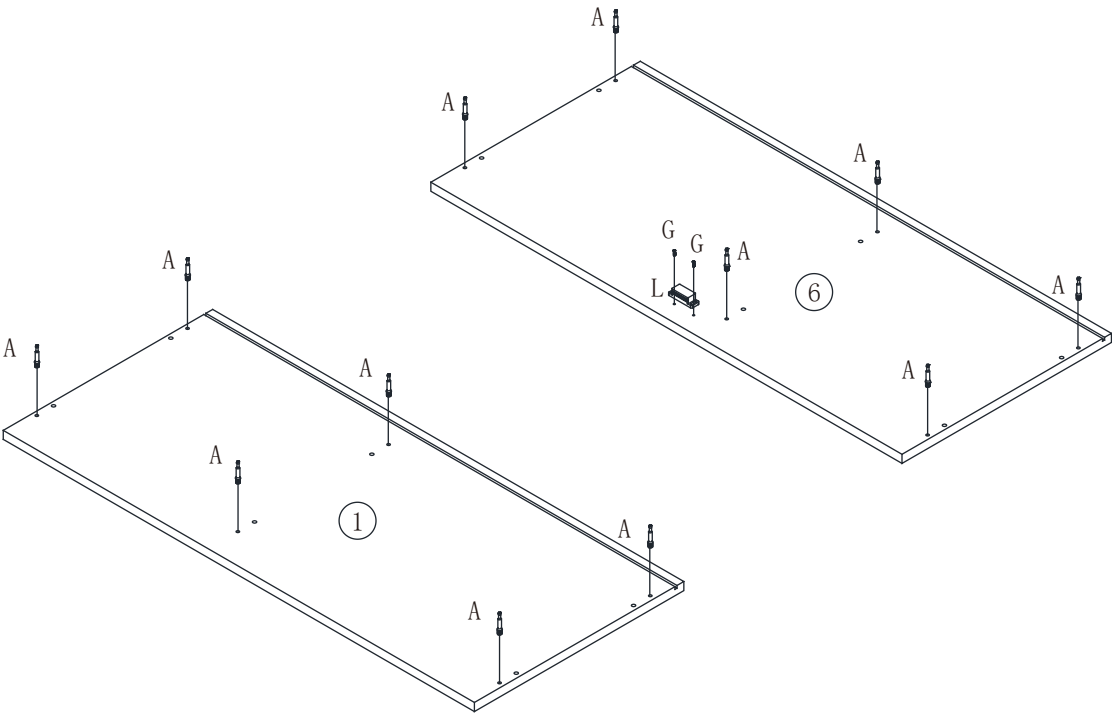
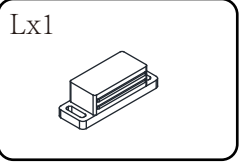
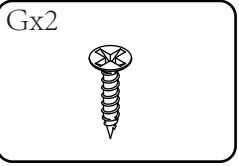
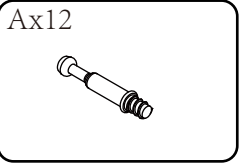
## Cam Lock Assembly Instructions

|   |   |
|---|---|
|    | <p>Diagram A</p> <p>Insert Cam Bolt into hole as shown in diagram A.</p>  |
|  | <p>Diagram B</p> <p>Make sure not to insert the Cam Bolt:<br/>Too deep as shown in figure B as this will cause the Cam Lock to be misaligned and unable to interlock properly.</p>                |
|  | <p>Diagram C</p> <p>Also avoid inserting the Cam Bolt too close to the surface of the hole as shown in figure C, as this will cause the Cam Lock to be too loose, and not interlock properly.</p> |
|  | <p>Connect the panels together.</p>   |
|  | <p>Insert the Cam Lock so the side opening fits over the head of the Cam Bolt.</p>  |
|  | <p>To tighten the Cam Lock, turn it clockwise on half a turn with a flat screwdriver.<br/><i>*Do not use an automatic screwdriver as it may bend or break if too much power is imposed.</i></p>   |

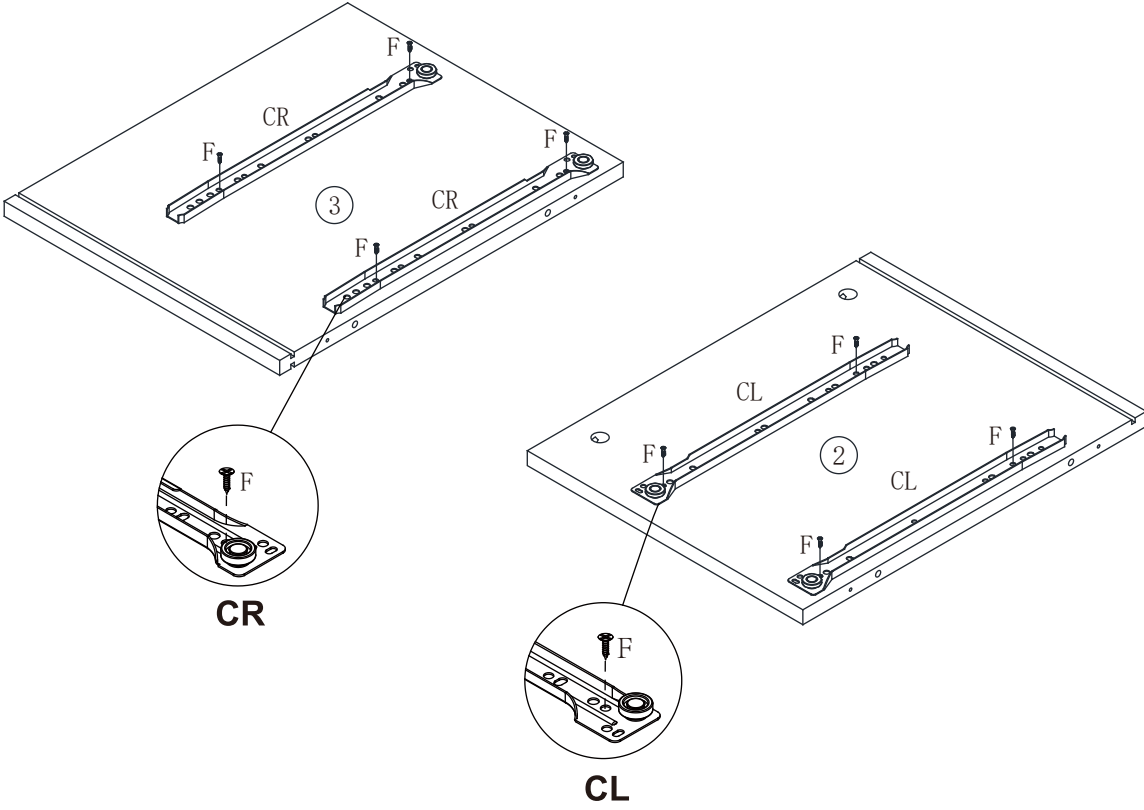
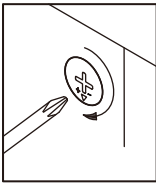
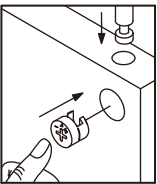
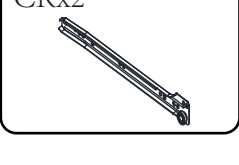
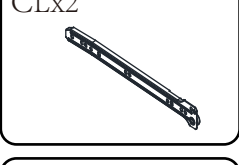
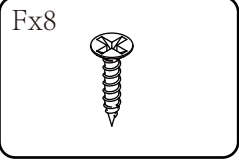


|                   |                   |                   |                   |                   |                   |
|-------------------|-------------------|-------------------|-------------------|-------------------|-------------------|
| Ax20<br>          | Bx20<br>          | Cx24<br><br>M6x30 | Dx12<br><br>M4x40 | Ex 8<br><br>M4x30 | Fx16<br><br>M3x12 |
| Gx18<br><br>M3x14 | Hx36<br><br>M4x14 | Ix32<br><br>M4x12 | Jx8<br>           | Kx4<br><br>M6x15  | Lx1<br>           |
| Mx6<br>           | Nx2<br><br>M4x25  | Ox6<br><br>M4x18  | Px3<br>           | Qx2<br>           | Rx4<br>           |
| Sx4<br>           | Tx20<br>          | Ux16<br>          | Vx2<br>           | Yx1<br>           | CRx2<br><br>300mm |
| CLx2<br><br>300mm | DRx2<br><br>300mm | DLx2<br><br>300mm |                   |                   |                   |

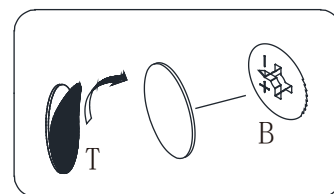
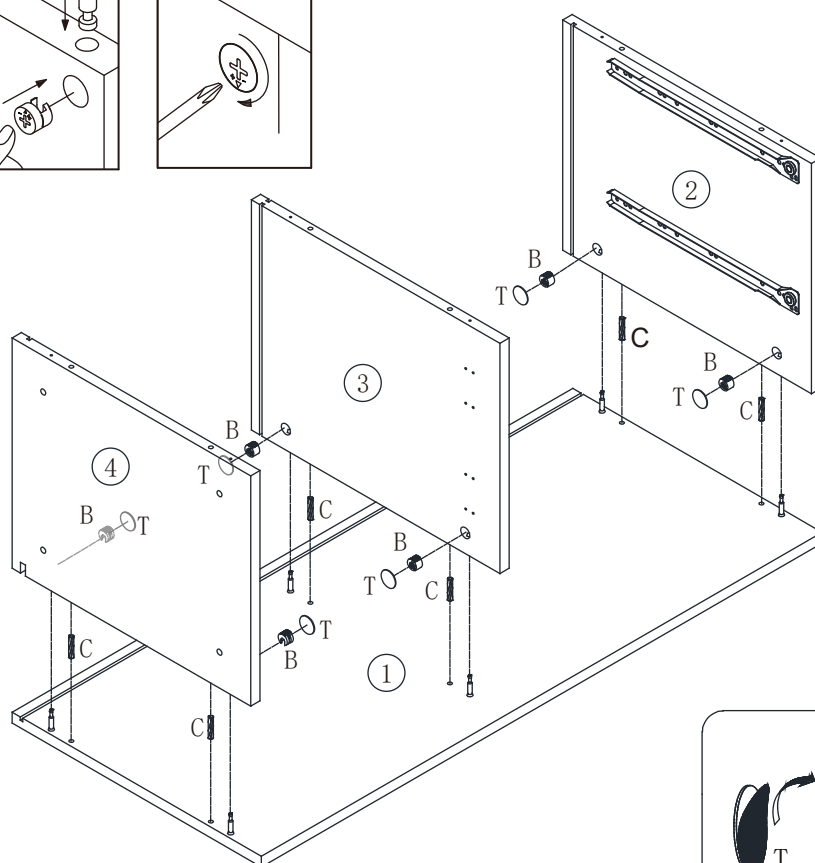
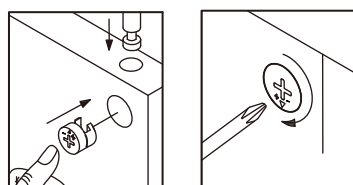
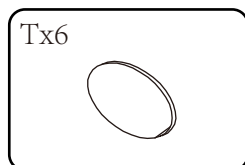
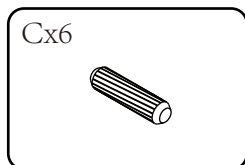
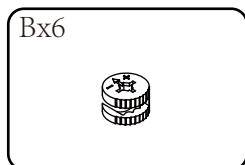
STEP 1



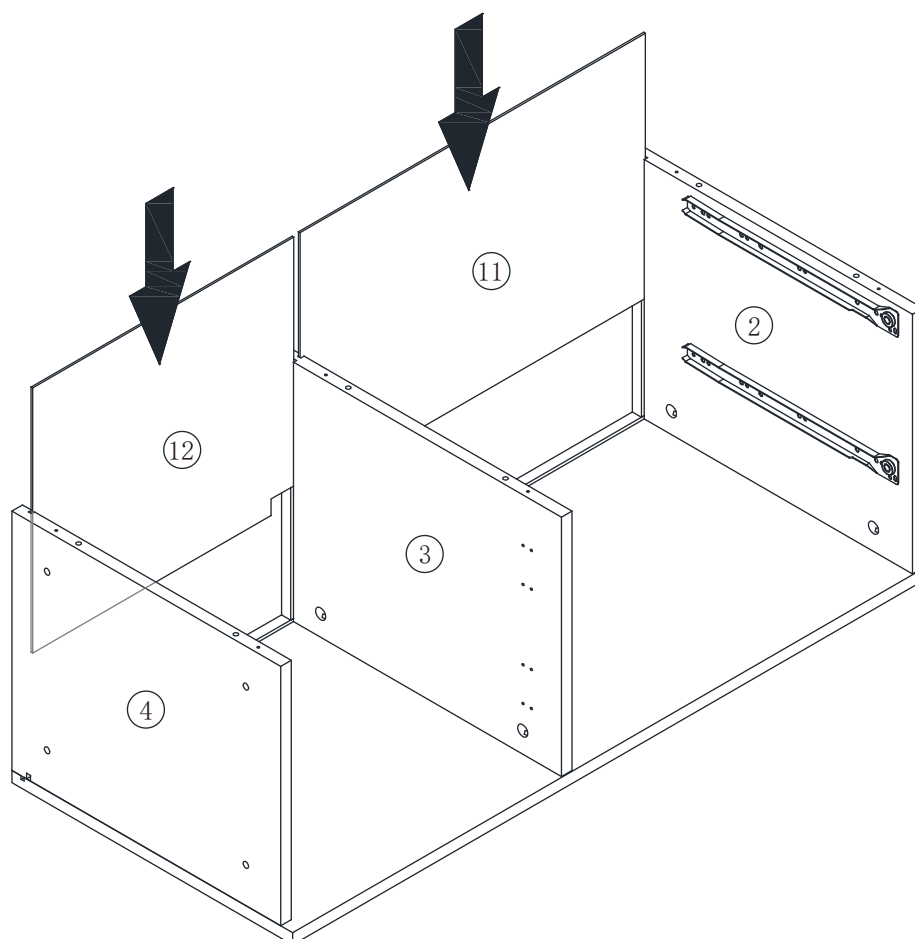
STEP 2



## STEP 3



## STEP 4

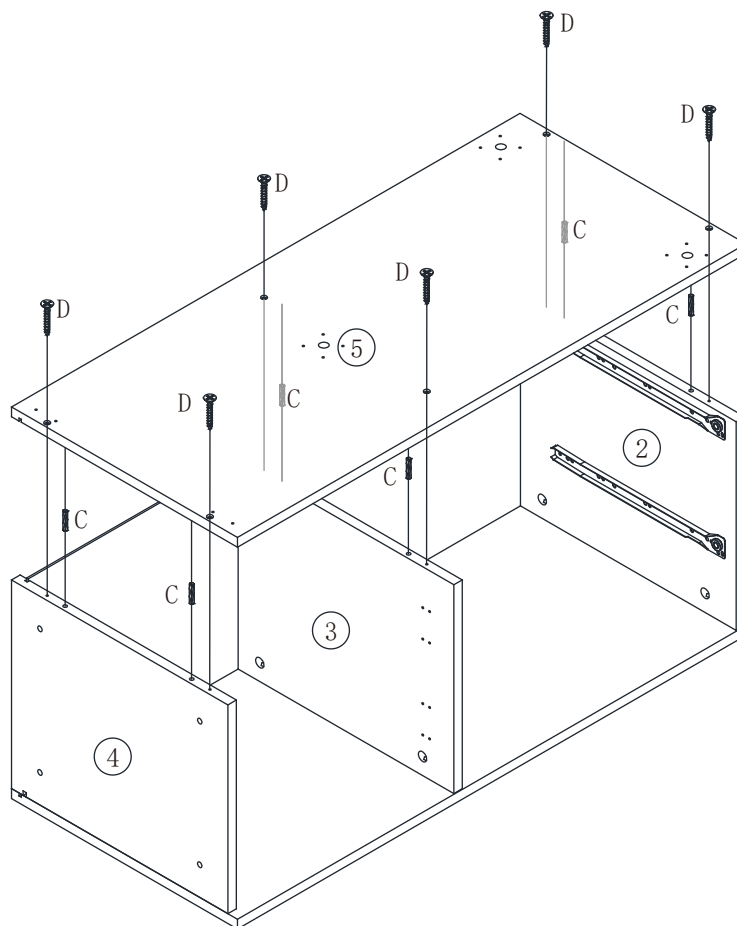


## STEP 5

Dx6



Cx6



## STEP 6

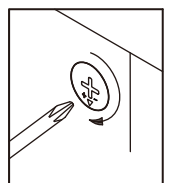
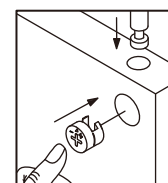
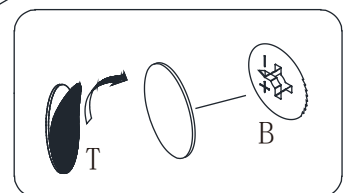
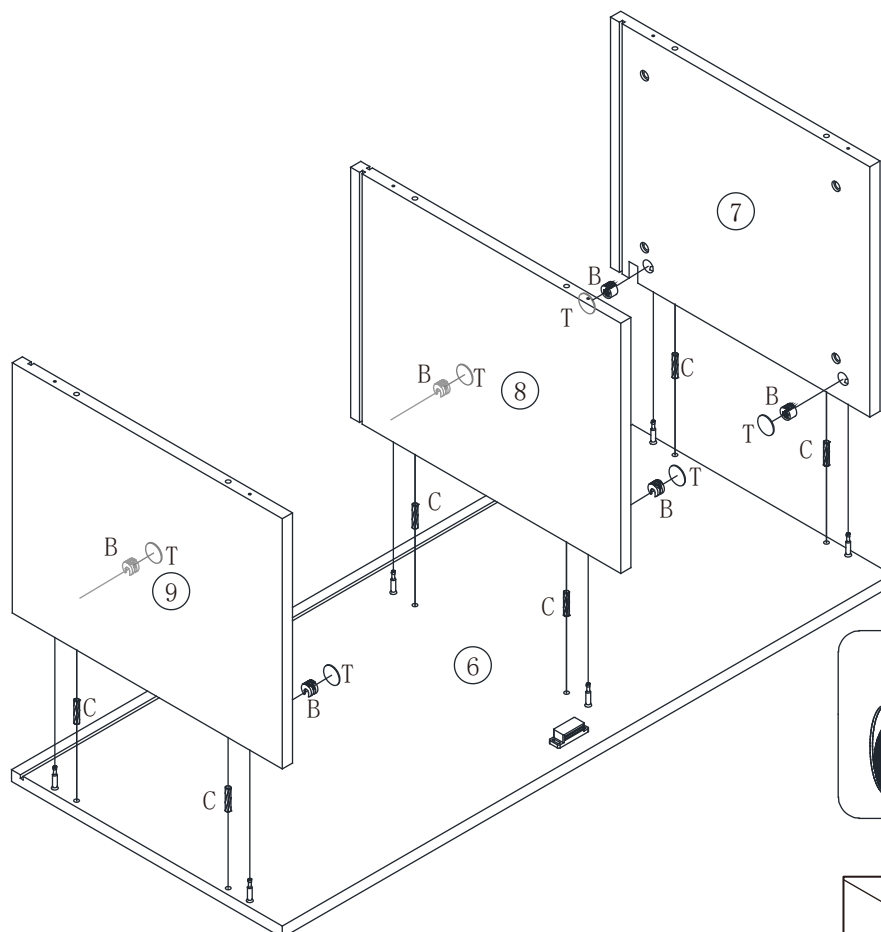
Bx6



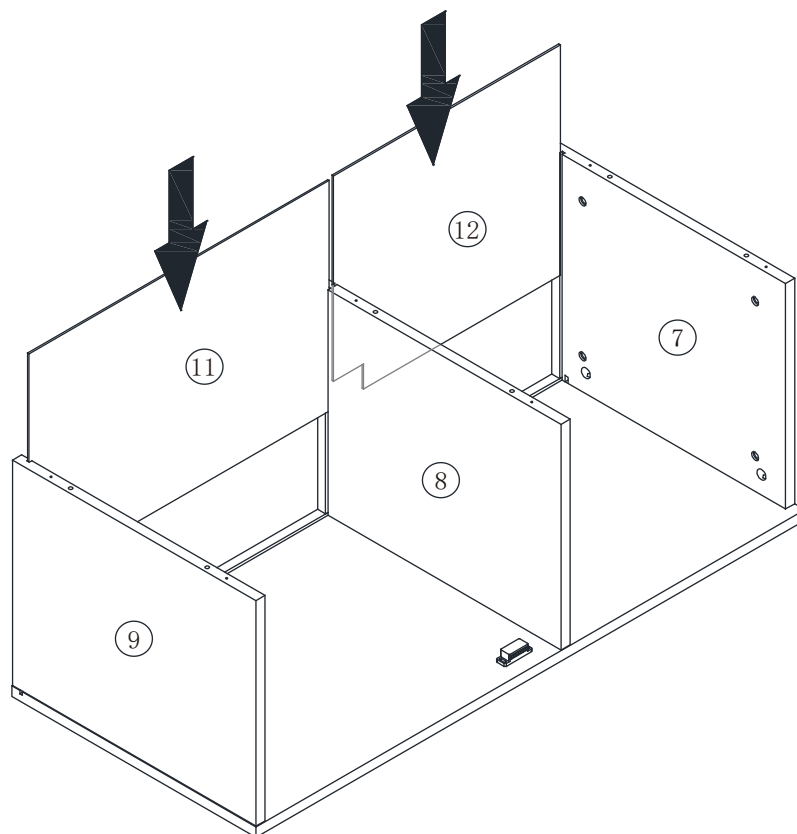
Cx6



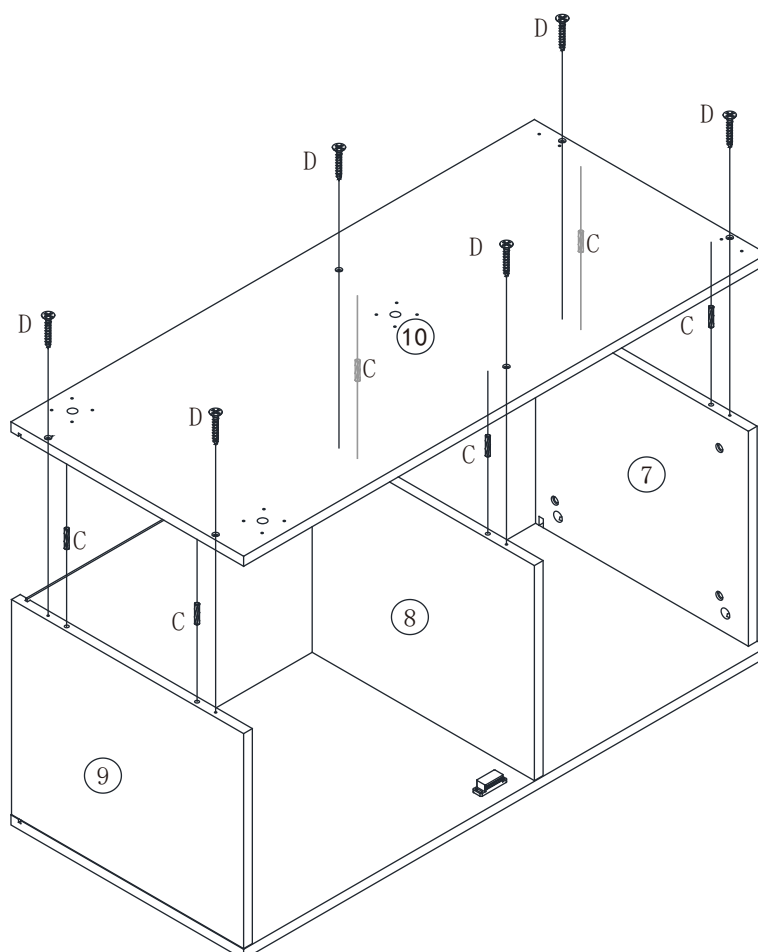
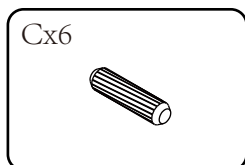
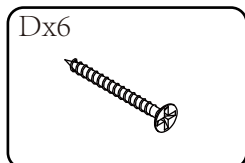
Tx6



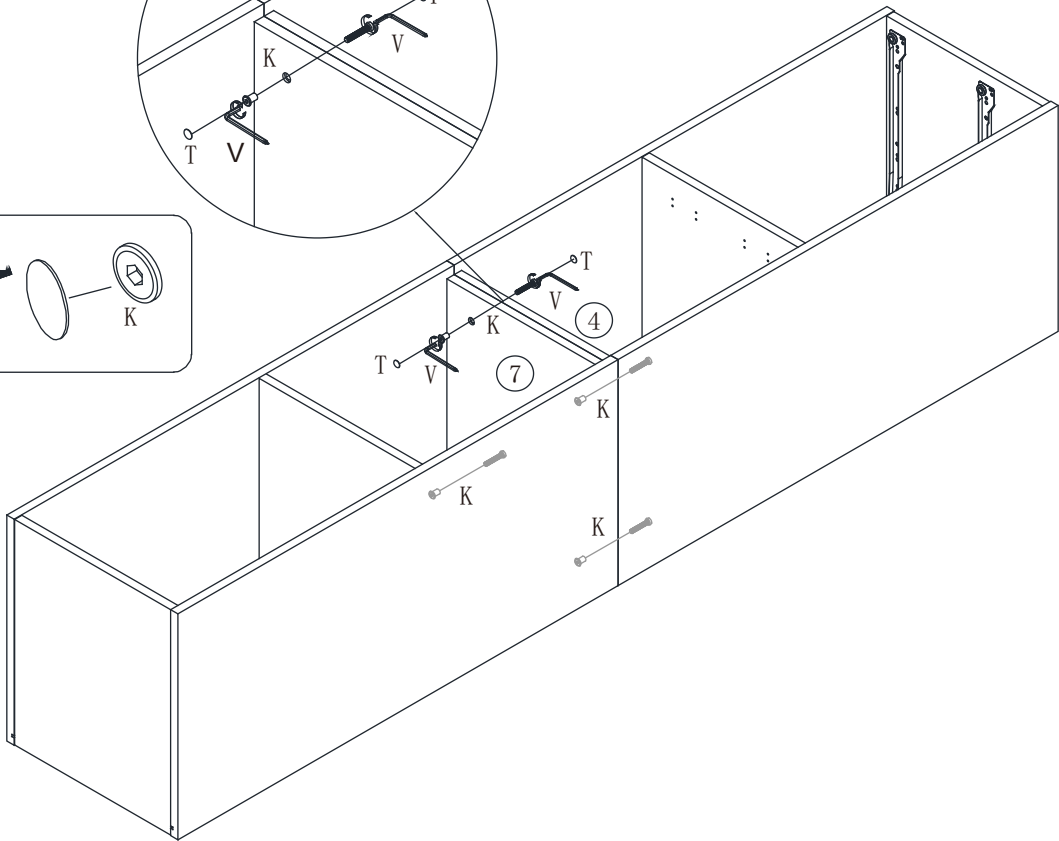
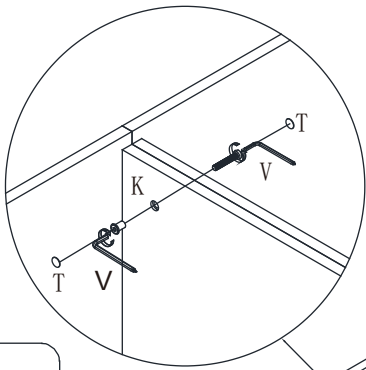
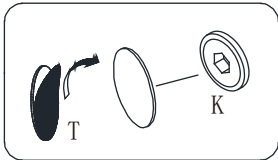
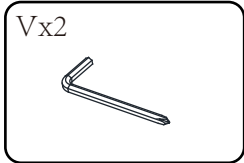
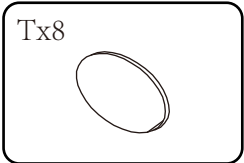
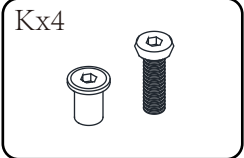
## STEP 7



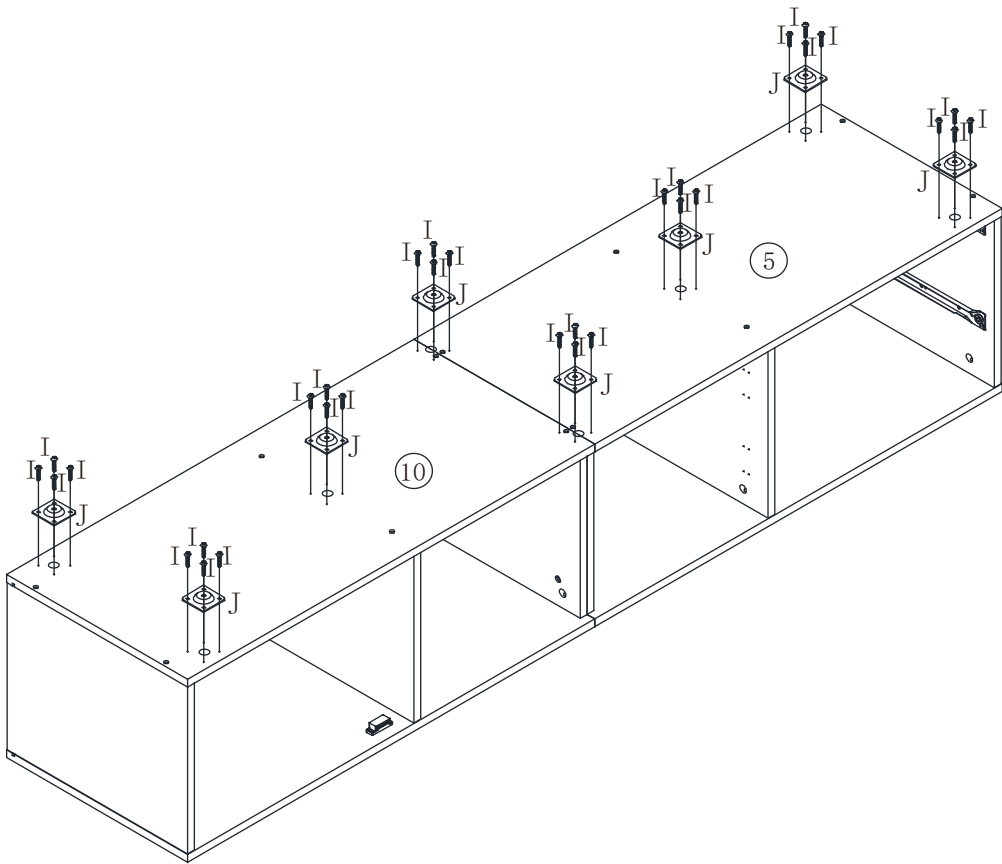
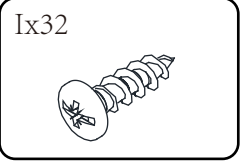
## STEP 8



STEP 9



STEP 10

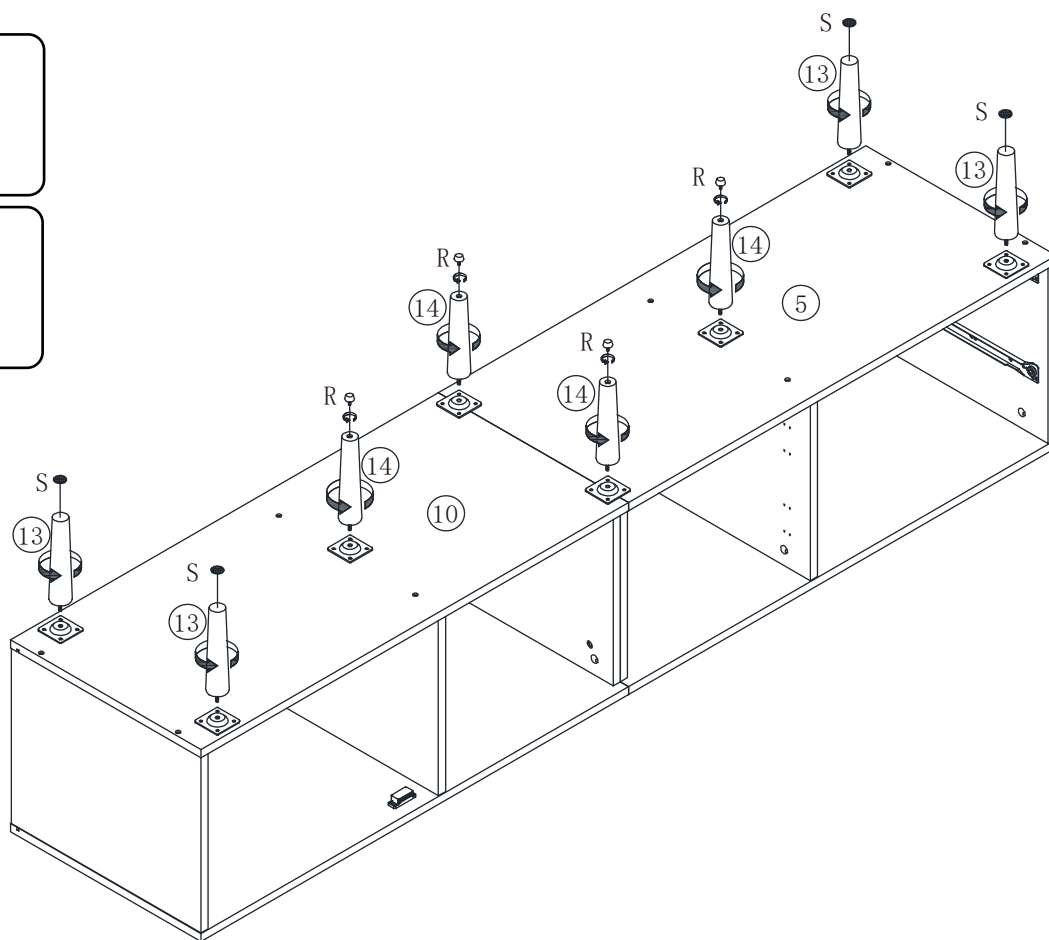


## STEP 11

Sx4

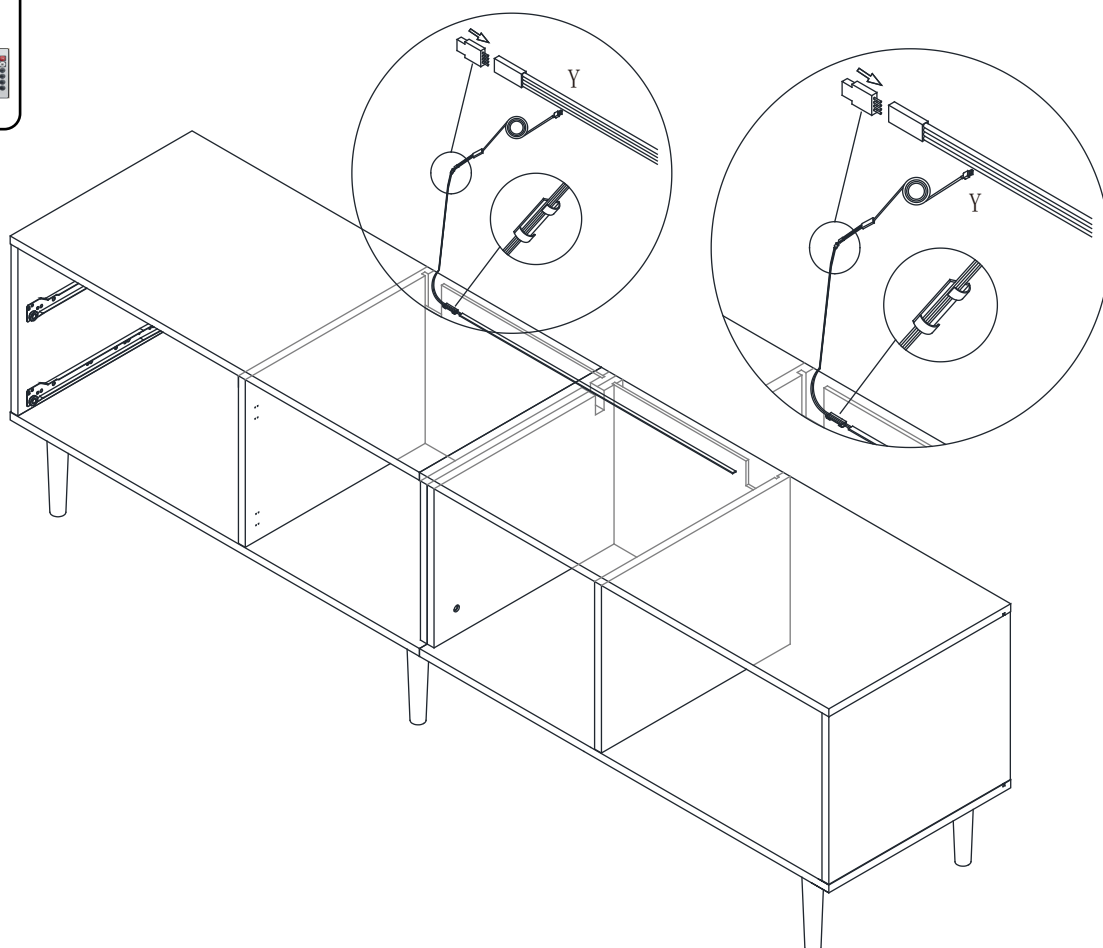


Rx4



## STEP 12

Yx1

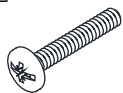


## STEP 13

Hx12



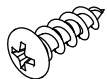
Ox2



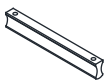
Mx6



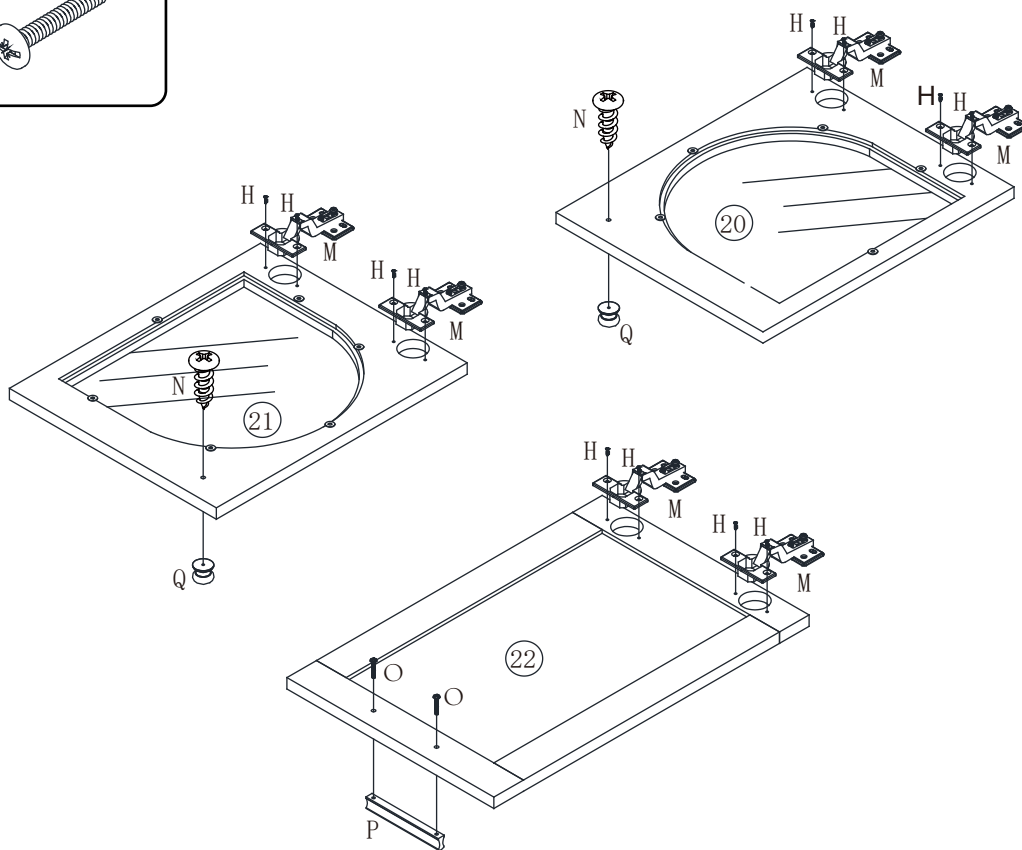
Nx2



Px1

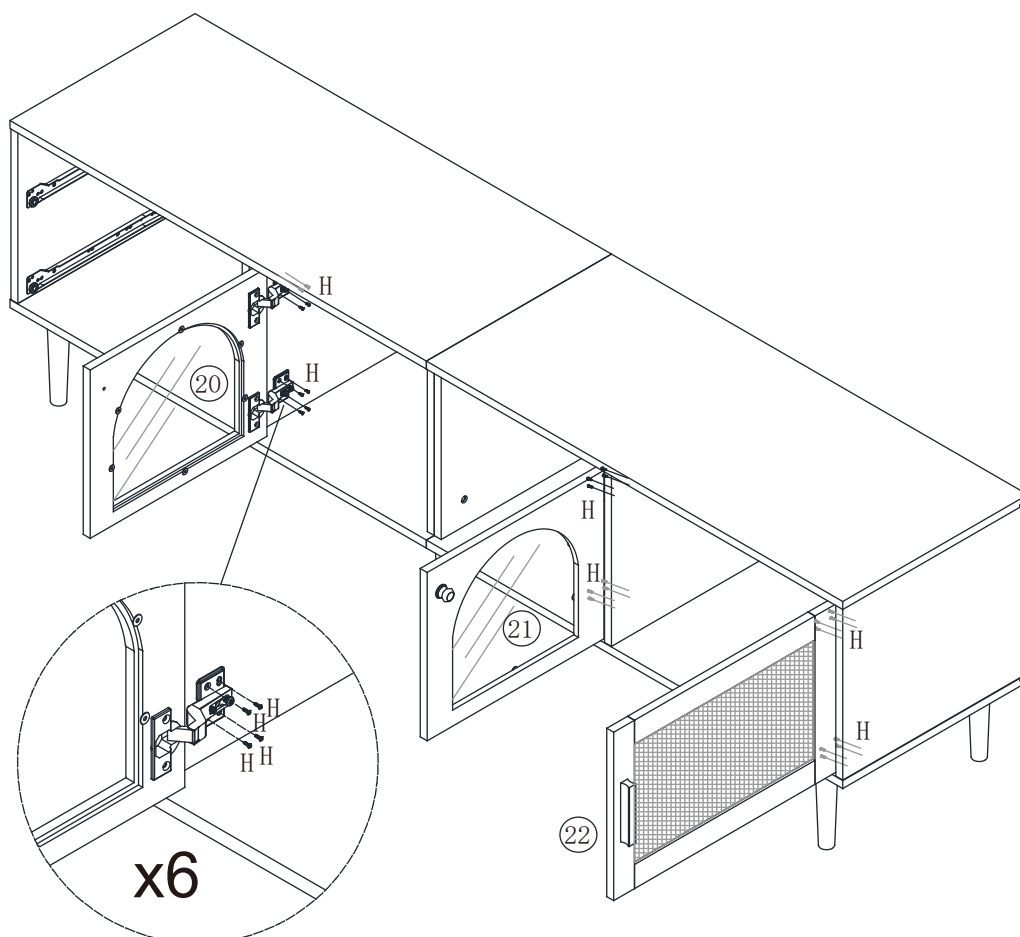
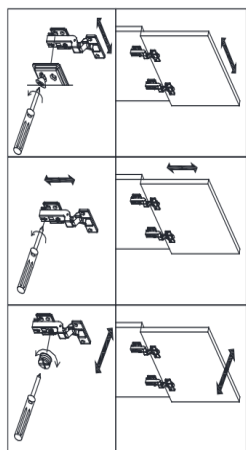


Qx2



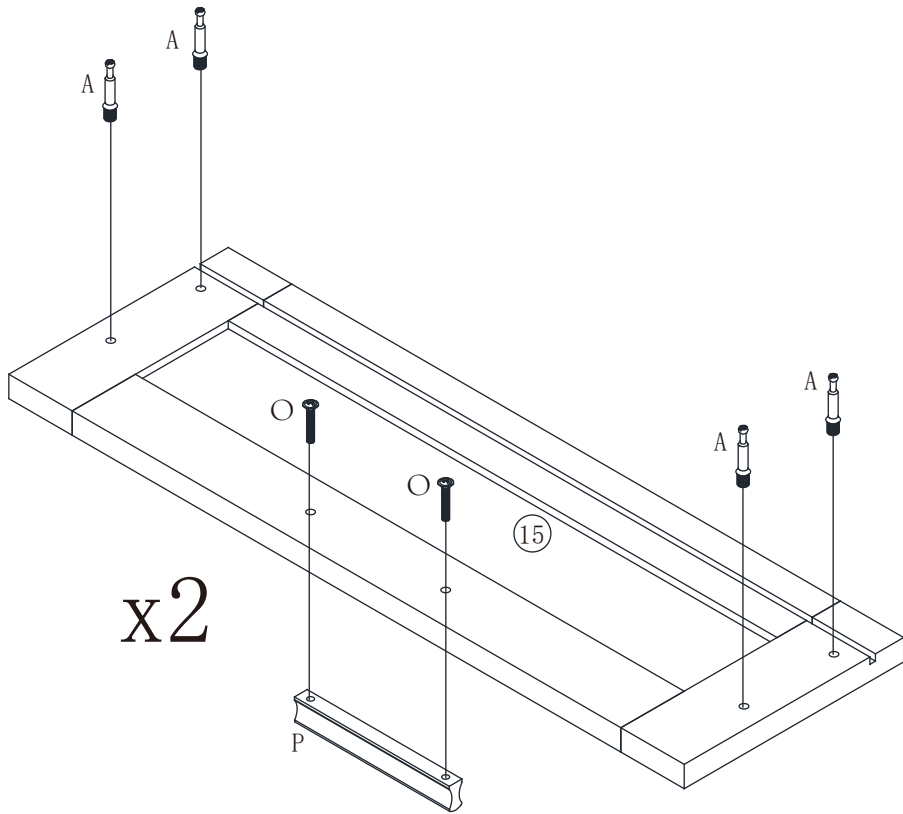
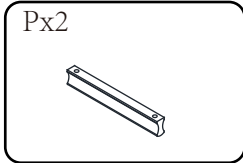
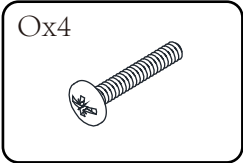
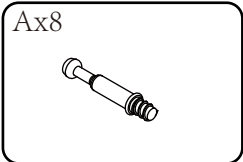
## STEP 14

Hx24

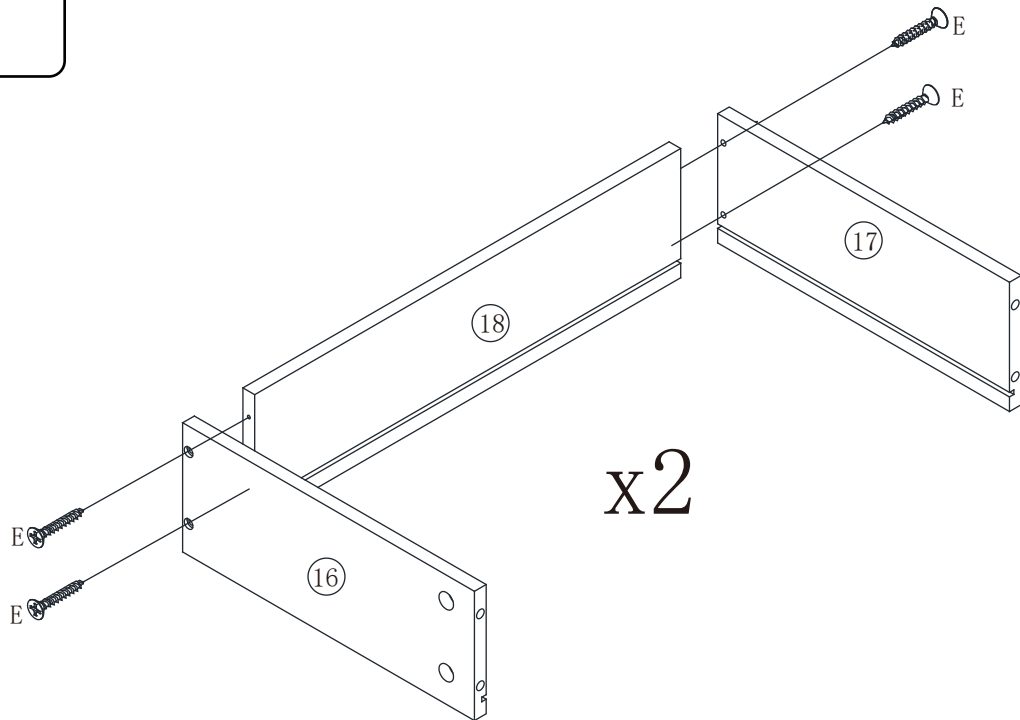
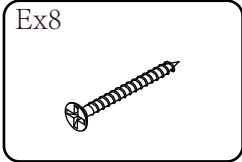


(For detailed hinge adjustment instructions, please refer to the last page.)

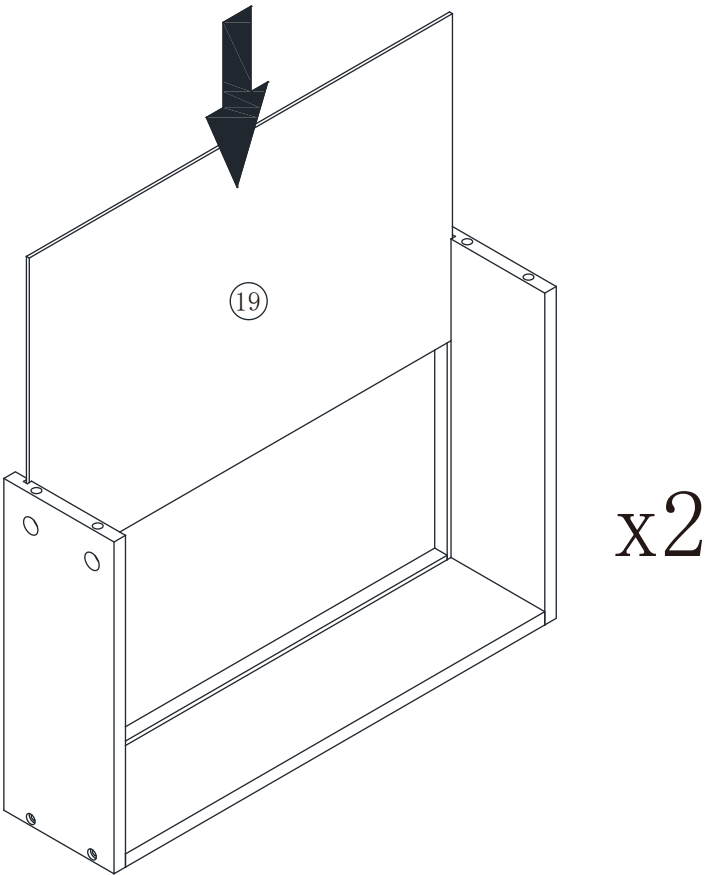
STEP 15



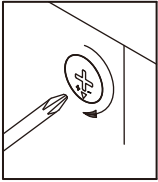
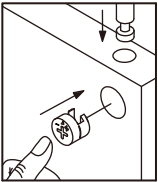
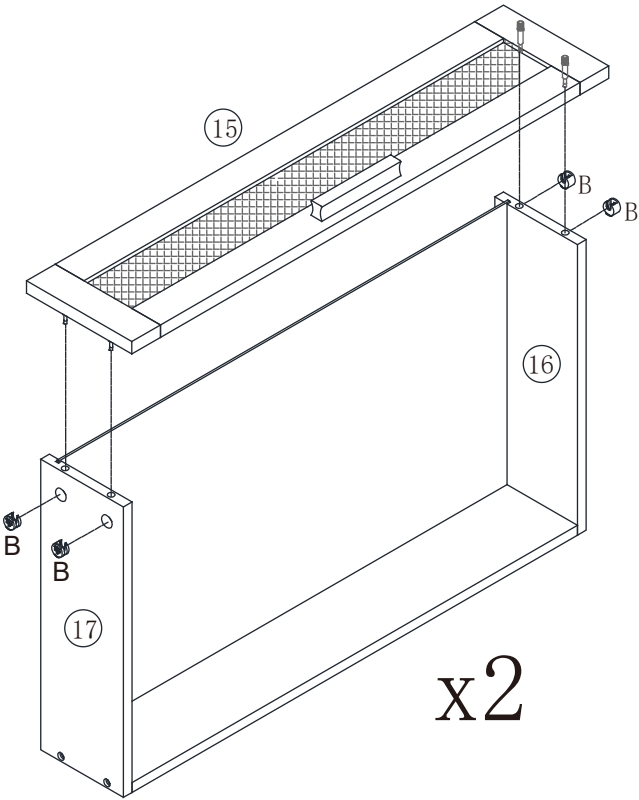
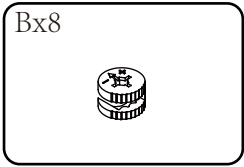
STEP 16



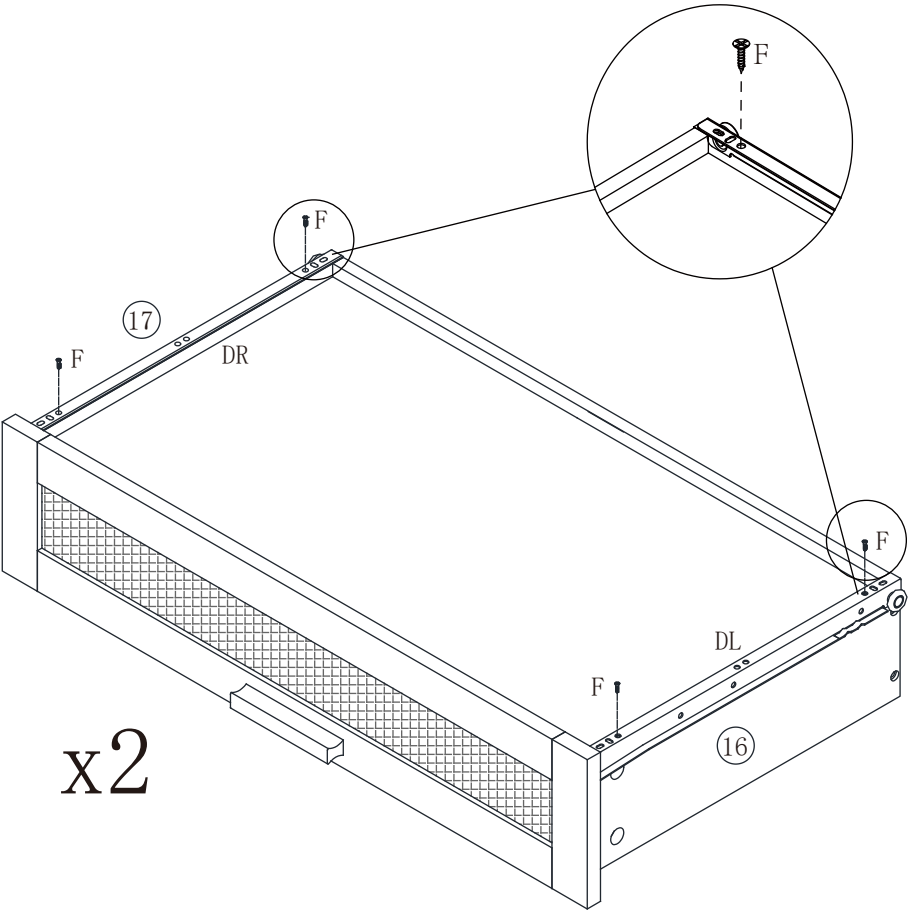
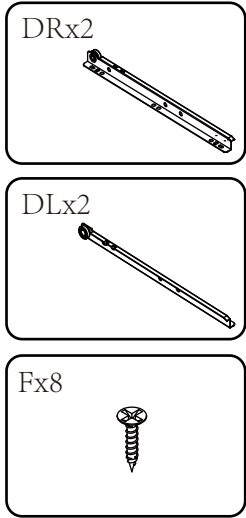
STEP 17



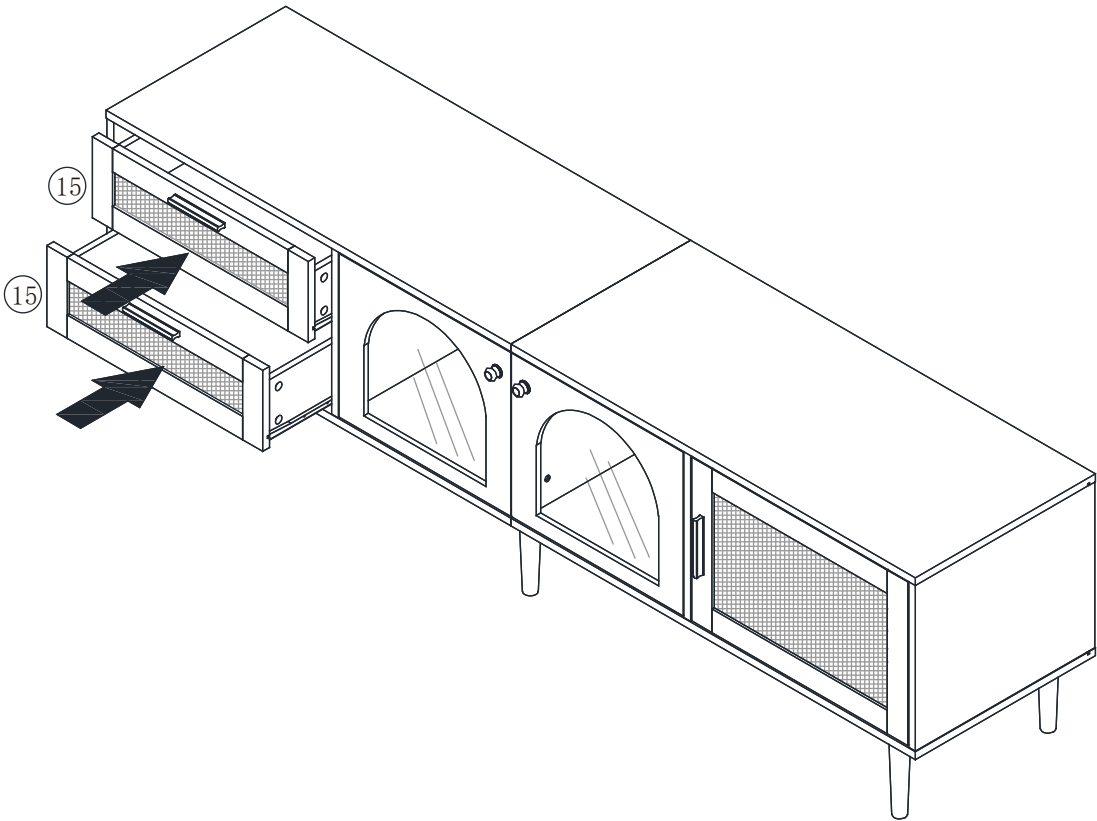
STEP 18



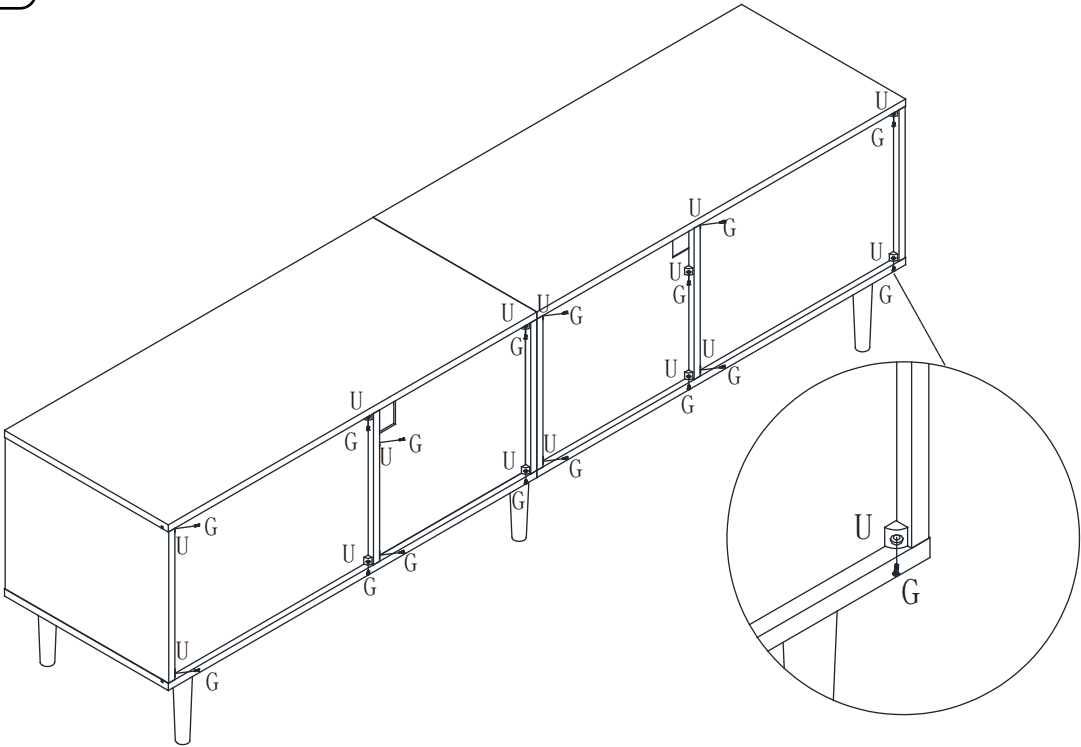
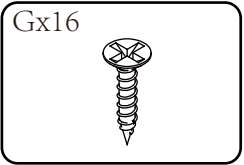
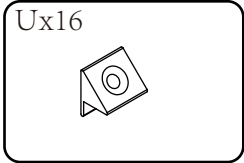
STEP 19



STEP 20

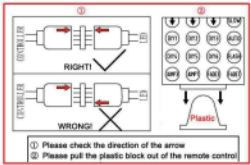


STEP 21

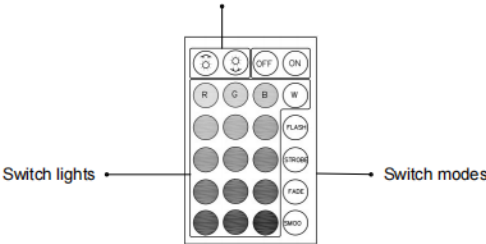


LED Light

- How to fix LED strip lights not working:
- 1. Make sure the arrows on the female and male connector are aligned.
  - 2. Make sure the plastic inserted into the remote control is removed before using it.
  - 3. The remote control only works within a certain range only. Don't use the remote control from a faraway distance.
  - 4. Point the remote control at the receiver, not the light strip.

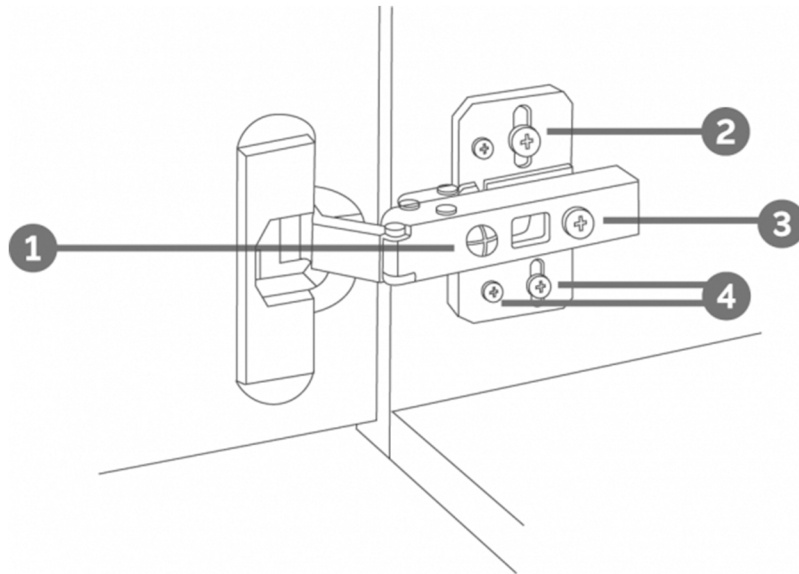


Note: These two buttons are invalid because this product cannot adjust the brightness of the light.



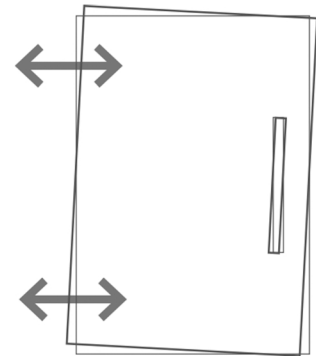
Note: The remote control is compatible with CR2025 battery. Battery is NOT included in the package to comply with safety regulations in certain shipping conditions.

# HINGE ADJUSTMENTS



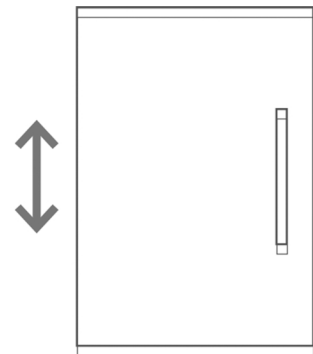
## ① Sideways / Tilt adjustment

Turn the screw  
**clockwise** to move the door further away from  
the side of the cabinet  
**anticlockwise** to move the door closer to the  
side of the cabinet



## ② ④ Height adjustment

While supporting the weight of the door, turn the  
screws  
**clockwise** to move the door up  
**anticlockwise** to move the door down



## ③ Forward and back adjustment

If the gap between the back of the door and the  
cabinet is too small, and the door may not close  
fully. Turn the screw  
**clockwise** to decrease the gap between the  
door and the cabinet  
**anticlockwise** to increase the gap between the  
door and the cabinet

