

CAUTION NOTICE: This Aquarium must be placed on a flat, stable surface to ensure proper use. Do not place on unstable, soft or carpeted flooring. It is suggested that this tank be placed against a flat wall. Like all aquariums, do not allow persons to hang or climb on Aquarium or Aquarium components.

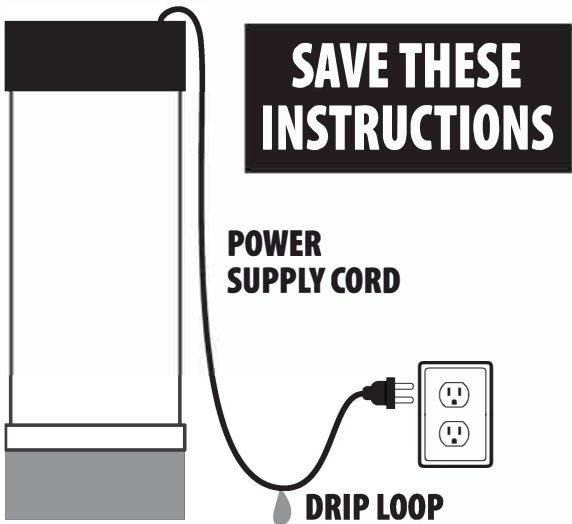
IMPORTANT SAFETY INSTRUCTIONS

WARNING – To guard against injury, basic safety precautions should be observed, including the following:
a) READ AND FOLLOW ALL SAFETY INSTRUCTIONS.

b) DANGER - To avoid possible electric shock, special care should be taken since water is employed in the use of aquarium equipment. For each of the following situations, do not attempt repairs by yourself; return the appliance to an authorized service facility for service or discard the appliance:

- 1. If the appliance falls into the water, **don't reach for it!** First unplug it and then retrieve it. If electrical components of the appliance get wet, unplug the appliance immediately. (Non-immersible equipment only).
- 2. If the appliance shows any sign of abnormal water leakage, immediately unplug it from the power source (Immersible equipment only).
- 3. Carefully examine the appliance after installation. It should not be plugged in if there is water on parts not intended to be wet.
- 4. Do not operate any appliance if it has a damaged cord or plug, or if it is malfunctioning or has been dropped or damaged in any manner.
- 5. To avoid the possibility of the appliance plug or receptacle getting wet, position aquarium stand and tank to one side of a wall-mounted receptacle to prevent water from dripping onto the receptacle or plug. A "drip loop," shown in the figure below, should be arranged by the user for each cord connecting an aquarium appliance to a receptacle. The "drip loop" is that part of the cord below the level of the receptacle, or the connector if an extension cord is used to prevent water traveling along the cord and coming in contact with the receptacle. If the plug or receptacle does get wet, DON'T unplug the cord. Disconnect the fuse or circuit breaker that supplies power to the appliance. Then, unplug and examine for presence of water in the receptacle.

- c) Close supervision is necessary when any appliance is used by or near children.
- d) To avoid injury, do not contact moving parts or hot parts such as heaters, reflectors, lamp bulbs, and the like.
- e) Always unplug an appliance from an outlet when not in use, before putting on or taking off parts, and before cleaning. Never yank cord to pull plug from outlet. Grasp the plug and pull to disconnect.
- f) Do not use an appliance for other than the intended use. The use of attachments not recommended or sold by the appliance manufacturer may cause an unsafe condition.
- g) Do not install or store the appliance where it will be exposed to the weather or to temperatures below freezing.
- h) Make sure an appliance mounted on a tank is securely installed before operating it.
- i) Read and observe all the important notices on the appliance.
- j) If an extension cord is necessary, a cord with proper rating should be used. A cord rated for less amperes or watts than the appliance rating may overheat. Care should be taken to arrange the cord so that it will not be tripped over or pulled.



90 DAY WARRANTY

A. Read these terms carefully. B. Retain this sheet with your sales slip. C. Please DO NOT return this product to your dealer.

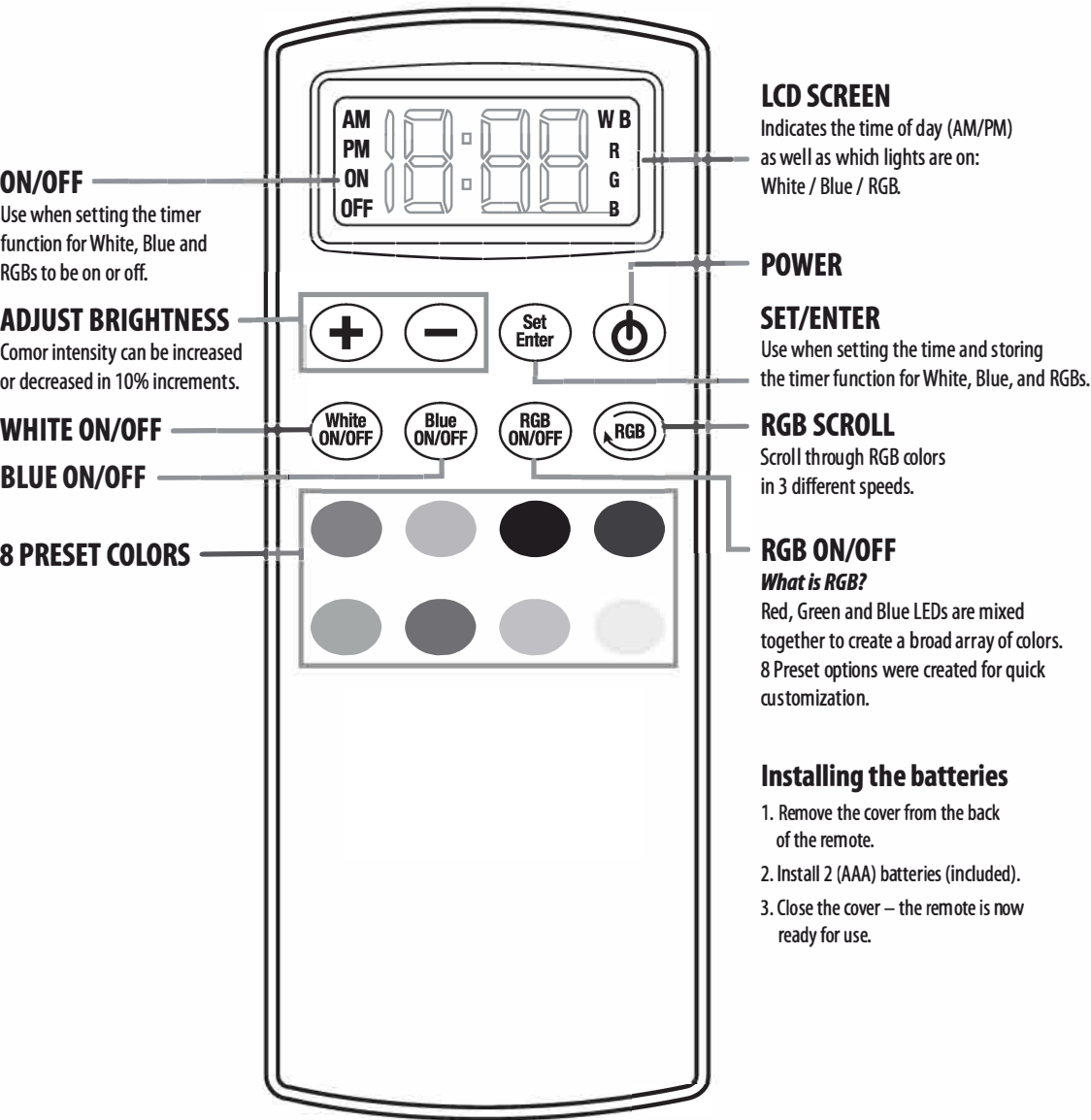
1. This product is warranted under normal usage against defective material and workmanship for a period of 90 days from date of purchase. Repairs and replacements will be made at our discretion, free of any charge for parts and or labor.

2. This warranty will not apply to any product which has been subject to misuse or negligence.

3. We assumes no liability with respect to loss or damage to livestock or personal property, irrespective of the cause thereof. The warranty is in lieu of all warranties, expressed or implied, including the implied warranty of merchantability. Neither the seller nor manufacturer shall be liable for any loss or damage, consequential or direct, arising from the use or inability to use this product. Defects resulting from misuse, abuse or accident are expressly excluded from coverage under this warranty. Some states do not allow limitation on how long an implied warranty lasts or do not allow any exclusion or limitation of incidental or consequential damages, so the limitations may not apply to you.



LM1 / LM2 LED LIGHT REMOTE



Setting the Time

- 1. Press and hold **Set Enter** for 3 seconds until you see the hour blinking.
- 2. Use the **+** and **-** buttons to set the hour – **AM/PM** will be displayed on the screen.
- 3. Press **Set Enter**. The minutes will be blinking. Use the **+** and **-** buttons to set the minute.
- 4. Press **Set Enter**. The time will be set.

Setting Desired Manual Color Options

Set the fixture to the desired color combination by following the steps below:

- 1. Setting the White LEDs
 - a. Press **White ON/OFF** to turn the White LEDs on – **W** will be displayed on the screen.
 - b. Use the **+** and **-** buttons to adjust the color intensity of the White LEDs only.
 - c. Press **White ON/OFF** to turn the White LEDs off.
- 2. Setting the Blue LEDs
 - a. Press **Blue ON/OFF** to turn the Blue LEDs on – **B** will be displayed on the screen.
 - b. Use the **+** and **-** buttons to adjust the color intensity of the Blue LEDs only.
 - c. Press **Blue ON/OFF** to turn the Blue LEDs off.
- 3. Setting the RGB LED Color Option
 - a. Press one of the 8 preset color options to turn the RGBs on – **RGB** will be displayed on the screen.
 - b. Use the **+** and **-** buttons to adjust the color intensity of the RGBs only.
 - c. Press **RGB ON/OFF** to turn the RGBs off.

Note: To set different color intensities for each of the White, Blue and RGBs – each specific color must be on by itself. If all three colors (or two) are on at the same time the intensity will be adjusted for all 3 colors to the same intensity. Ex: If you see **W** on the screen and you use the **+** and **-** buttons, the color intensity will be adjusted for only the White LEDs. If you see **W** and **B** on the screen and you use the **+** and **-** buttons, the color intensity will be adjusted for the same amount for both the White AND Blue LEDs.

Programming the Timer

Automatic Sunrise/Sunset and Moonrise/Moonset

This light is equipped with automatic 30 minute ramp times to reflect a natural Sunrise/Sunset and Moonrise/Moonset. When setting the timer, the **ON** and **OFF** times indicate when the LEDs will begin gradually ramping up or dimming down.

Ex: If you set the **ON** time for 9:00 AM, your light will turn on at 9:00 AM at the lowest light intensity and will gradually ramp up for 30 minutes to reach full brightness by 9:30 AM. Similarly, if the **OFF** time is set for 6:00 PM, your light will start ramping down at 6:00 PM and won't be completely off until approximately 6:30 PM.

Note: Make sure your desired colors are in the **ON** setting before you start programming the timer. **W**, **B** and **RGB** should be displayed on the screen.

- 1. Press and hold **Set Enter** for 3 seconds until you see the hour blinking.
- 2. Press **Set Enter** twice – you will see **W** and **ON** on the screen to set the White LEDs ON.
- 3. Use the **+** and **-** buttons to set the hour – **AM/PM** will be displayed on the screen.
- 4. Press **Set Enter**. The minutes will be blinking. Use the **+** and **-** buttons to set the minute.
- 5. Press **Set Enter** – you will see **W** and **OFF** on the screen to set the White LEDs OFF. Repeat steps 3-4.
- 6. Press **Set Enter** – you will see **B** and **ON** on the screen to set the Blue LEDs ON. Repeat steps 3-4.
- 7. Press **Set Enter** – you will see **B** and **OFF** on the screen to set the Blue LEDs OFF. Repeat steps 3-4.
- 8. Press **Set Enter** – you will see **RGB** and **ON** on the screen to set the RGBs ON. Repeat steps 3-4.
- 9. Press **Set Enter** – you will see **RGB** and **OFF** on the screen to set the RGBs OFF. Repeat steps 3-4.
- 10. Press **Set Enter** – your fixture is now programmed to your custom settings.

Note: If you don't want to set the LEDs to turn on/off you can leave them both at 12:00AM.

RGB LED Scroll Mode

- 1. Press **RGB** to scroll through the different color options at different speeds.
 - a. 25 – Color will change every 5 seconds.
 - b. 50 – Color will change every 4 seconds.
 - c. 75 – Color will change every 3 seconds.
 - d. 100 – Color will stop scrolling and be set to the color you selected.