

Features

- Frameless construction with full-overlay doors.
- One door and three right offset drawers.
- Three-way adjustable slow-close door hinges with 110-degree opening capability for easy cabinet access.
- Optional adjustable shelf / drawer organizer (sold separately).
- Coordinates with other products in the Jacquard™ collection.
- Catalyzed conversion varnish provides a durable moisture-resistant finish.
- Solid wood drawers with dovetail construction.
- Full-extension 18" depth drawers with slow-close under-mount slides for smooth opening.
- Door and drawer pulls are sold separately.

Material

- Solid wood and veneers.

Recommended Accessories

K- 2796-1 Vanity Top Bathroom Sink
K- 2796-8 Vanity Top Bathroom Sink
K- 2779-1 Vanity Top Bathroom Sink
K- 2779-8 Vanity Top Bathroom Sink
K- 5456 Bathroom Vanity Top
K- 5422 Bathroom Vanity Top
K- 5437 Bathroom Vanity Top
K- 99686 Knob
K- 99689 Handle

Optional Accessories

K- 99680-SH8 Rollout Tray
K- 99679-SH8 Rollout Drawer
K- 99665 Framed Mirror
K- 99681 Side Mount Electrical Outlets
K- 99682 General Storage
K- 99683 Makeup Storage
K- 99684 Drawer Dividers
K- 99672 Two-Drawer Bridge
K- 99668 Lap Drawer
K- 99676 Filler Strip
K- 99001 Mirrored Cabinet
K- 99007 Mirrored Cabinet
K- 99009 Mirrored Cabinet
K- 99662-15 Medicine Cabinet Surround
K- 99678-SH8 Adjustable Shelf with Electrical Outlets



Codes/Standards

CARB P2

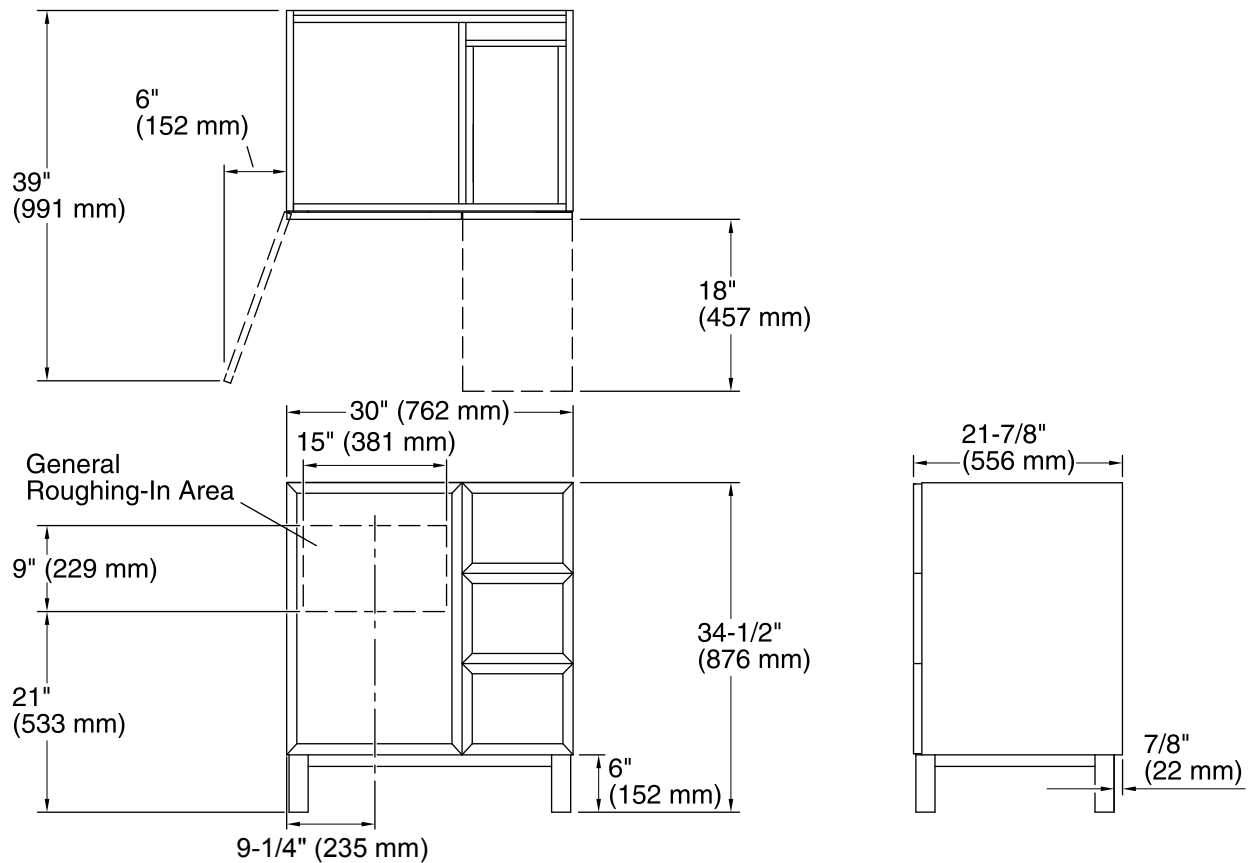
KOHLER® One-Year Limited Warranty

See website for detailed warranty information.

Available Color/Finishes

Color tiles intended for reference only.

Color	Code	Description
	1WA	Linen White
	1WF	Khaki White Oak
	1WD	Ramie Walnut
	1WG	Cherry Tweed
	1WB	Claret Suede
	1WC	Felt Grey
	1WE	Terry Walnut
	1WT	Mohair Grey
	1WU	Batiste Black



Technical Information

All product dimensions are nominal.

Vanity type: Standard

Notes

Install this product according to the installation guide.

Decorative cabinet hardware is not supplied. Refer to the KOHLER bath accessories line for recommended cabinet hardware to complement your vanity.

Select the type of fastener based upon the wall material. Two 250 lb (113.4 kg) minimum load bearing fasteners are recommended.