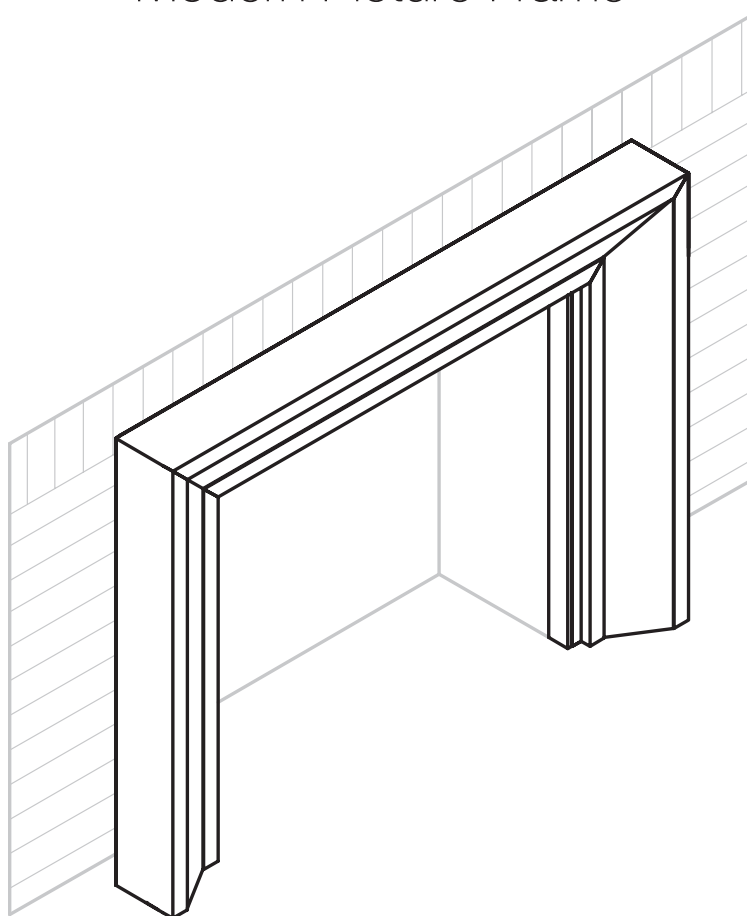




MODERN EMBER

Everly Modern Picture Frame



Mitered Surround

Models:

EVERLY-4842-BCHW | EVERLY-4842-WW | EVERLY-4842-SBL | EVERLY-4842-UMB | EVERLY-4842-UN | EVERLY-4842-WHT
EVERLY-5642-BCHW | EVERLY-5642-WW | EVERLY-5642-SBL | EVERLY-5642-UMB | EVERLY-5642-UN | EVERLY-5642-WHT

OWNER'S MANUAL

Important Safety Instructions

Read and understand the entire manual before attempting to assemble, install, or operate the product.

⚠ WARNING

Heat clearances must be adhered to for installation of this product; adhere to your local building heat clearance codes and heat clearances as stated by the manufacturer of your specific firebox or stove model. Failure to do so will void the product warranty. Always consult a professional.

⚠ CAUTION

To avoid scratching the finish, assemble the product on a soft, non-abrasive surface such as carpet, thick bedding, or a large blanket.

⚠ CAUTION

Before assembly and installation, carefully unwrap all parts. Locate and set aside the hardware kit before disposing of the packaging.

⚠ CAUTION

Use care when assembling the product. Take your time and follow the instructions closely.





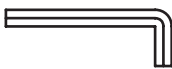


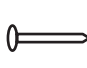
SAVE THESE INSTRUCTIONS FOR FUTURE USE.

Parts & Hardware

PARTS

PART NO.	DESCRIPTION	QTY
1	Breast Plate	1
2	Left Leg	1
3	Right Leg	1
4	French Cleat Mounting Board	1
5	Left Scribe Molding	1
6	Right Scribe Molding	1
7	Top Scribe Molding	1

HARDWARE

PART NO.	DESCRIPTION	QTY
A	 Bolt 1/4" x 1-3/4"	4
B	 Bolt 1/4" x 1-1/4"	8
C	 Lock Washer 1/4"	12
D	 Flat Washer 1/4"	12
E	 Allen Wrench	1
F	 Screw #8 x 40mm	4
G	 Screw #10 x 80mm	4
H	 Small Nails	1 pk

Preparation

MOUNTING GUIDE

It is recommended to mount to a wall studs. If your application calls for mounting directly to drywall, concrete, or brick, we recommend using the appropriate hardware that can be found at your local hardware store.



REQUIRED:

(NOT INCLUDED)

Pencil	Tape Measure
Level	Stud Finder
Drill	Hammer

MAY BE REQUIRED:

(NOT INCLUDED)

Drywall Anchors
Concrete Anchors
Lag Bolts

Installation Guide

STEP 1: ASSEMBLE YOUR FIREPLACE MANTEL

Locate an area large enough to assemble your Fireplace Mantel, we recommend a floor section that has a soft surface. Place Breast Plate upside-down on a floor. One at a time, line up the holes on the legs with the holes on the Breast Plate and using the assembly hardware included, bolt each leg to the header. Make sure legs are straight, then tighten bolts to secure the legs. Leave on the floor until measuring is completed.

See the following section **“Assembly Instructions”** starting on page 5 for step-by-step instructions.

Installation Guide

STEP 2: DETERMINE LOCATION AND MEASURE

With the Fireplace Mantel upside down on a soft surface, hold the mounting board in position on the Breast Plate. Measure from the top of the Breast Plate to the bottom of the mounting board - make note of this measurement, as you will use it in one moment. **(See Figure A)**

Next, Place the Fireplace Mantel against the fireplace in the desired location. Draw a line on the wall along the top of the Fireplace Mantel Shelf. Remove the Fireplace Mantel from the wall. Using your hanger board measurement, measure and mark reference point for the bottom of the mounting board. Mark the line at several points to ensure a level mount. **(See Figure A)**

Locate and mark the location of the center of 3 studs (2x4 boards) inside the wall you intend to mount your mantel shelf. **(See Figure A)**

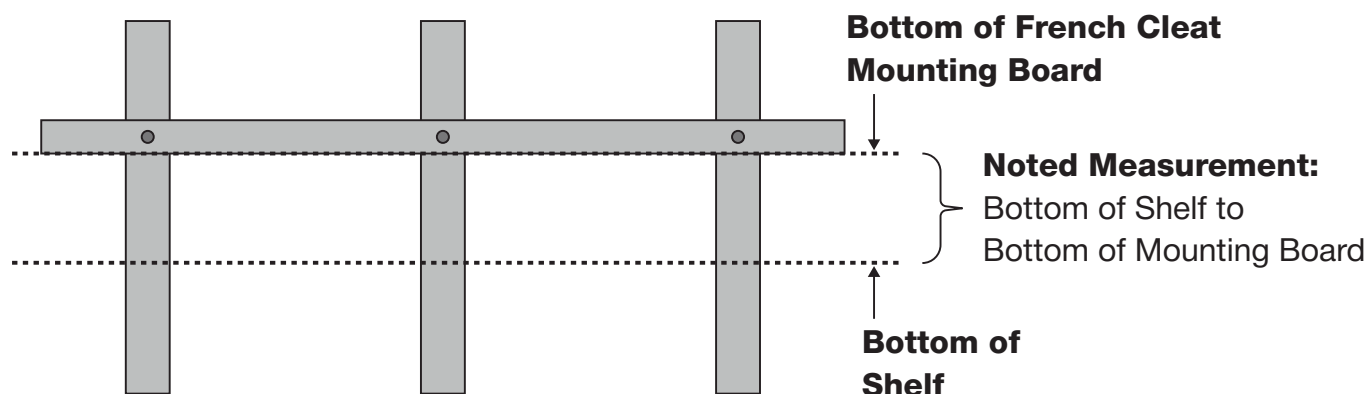


FIGURE A

STEP 3: ATTACH THE FRENCH CLEAT MOUNTING BOARD TO THE WALL

Place the included french cleat mounting board on the wall and line up the bottom of the French cleat mounting board with the Lower line. Attach the mounting board to the wall with appropriate fasteners for your application.

(See Figure B)

NOTE:

If you are mounting on a standard drywall over stud construction, make sure you screw the mounting board into the wood studs for strength. When attaching the shelf to a brick surface, you must use a masonry lag bolt.

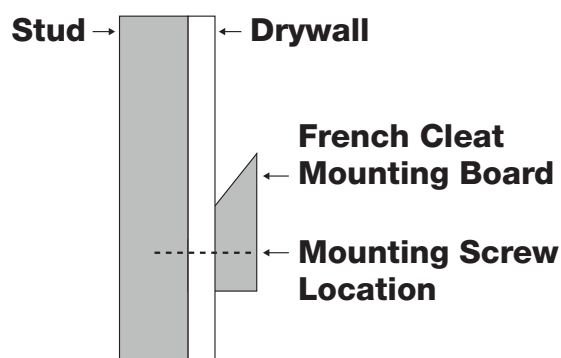


FIGURE B

STEP 4: MOUNTING THE FIREPLACE MANTEL AND INSTALLING SCRIBE MOLDING

Lift and place the fireplace mantel over the french cleat mounting board and slide down until the shelf is tight against the wall. Push the mantel tight against the wall and then push down firmly on the shelf to ensure the French cleat is properly connected. **(See Figure C)**

If needed place the included scribe molding on the inside edge of the mantel, mark and cut scribe molding if necessary. Attached the scribe molding using the supplied small nails.

NOTE:

The edge of the mantel against the wall may not be tight against the wall across the whole length of the mantel. The wall may not be uniform and flat. If not, use caulk to fill the gap.

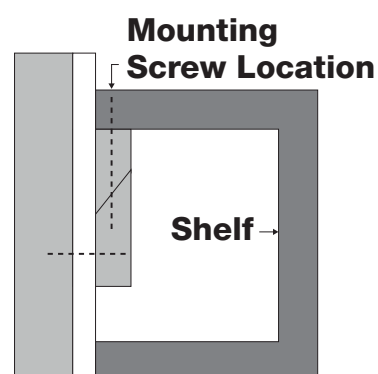
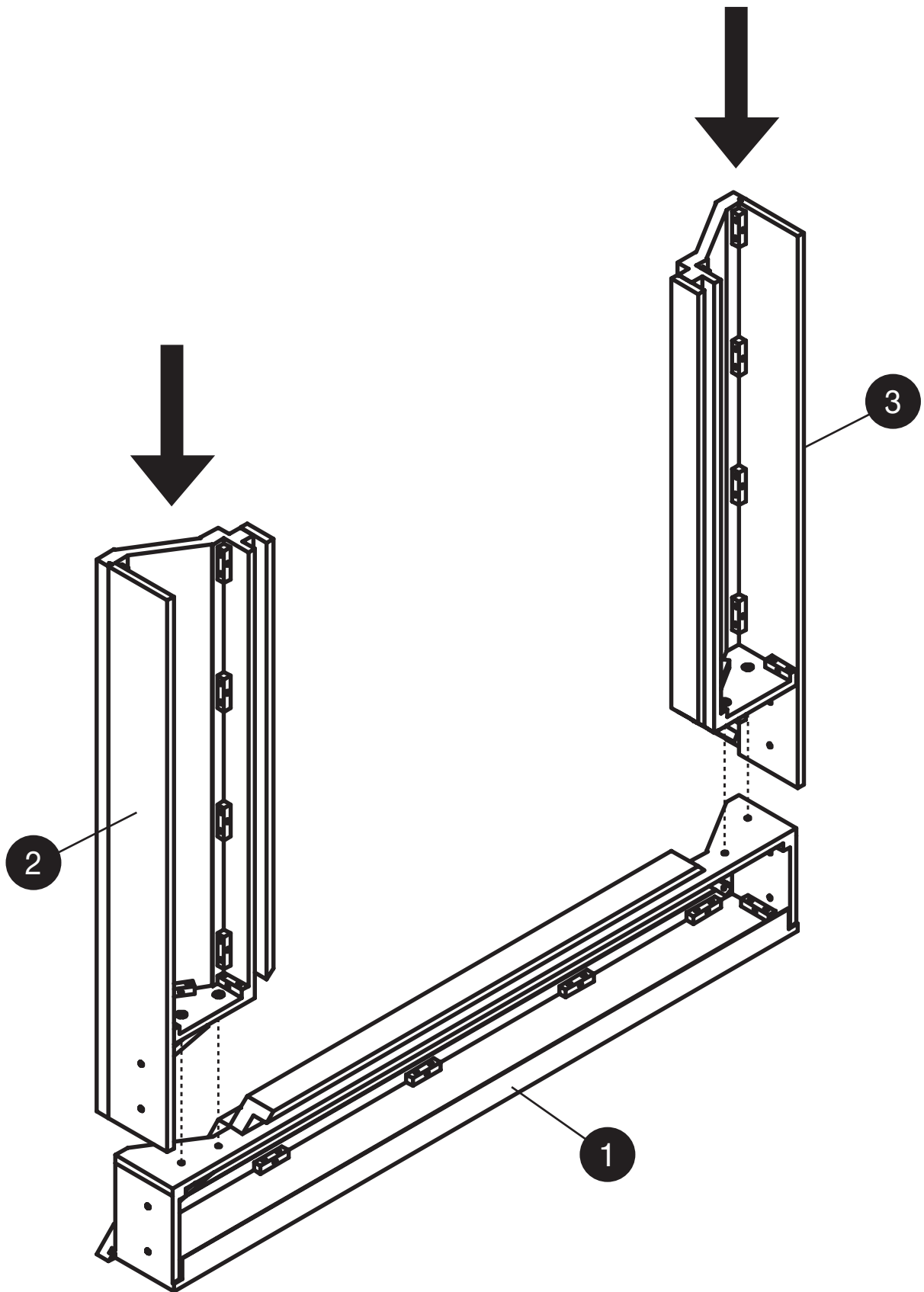


FIGURE C

Assembly Instructions

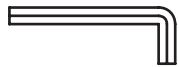
STEP 1



1. Place the Breast Plate **(1)** upside down on a soft surface.
2. Place the Left Leg **(2)** and Right Leg **(3)** onto the Top as pictured above.

Assembly Instructions

STEP 2



E | Allen Wrench



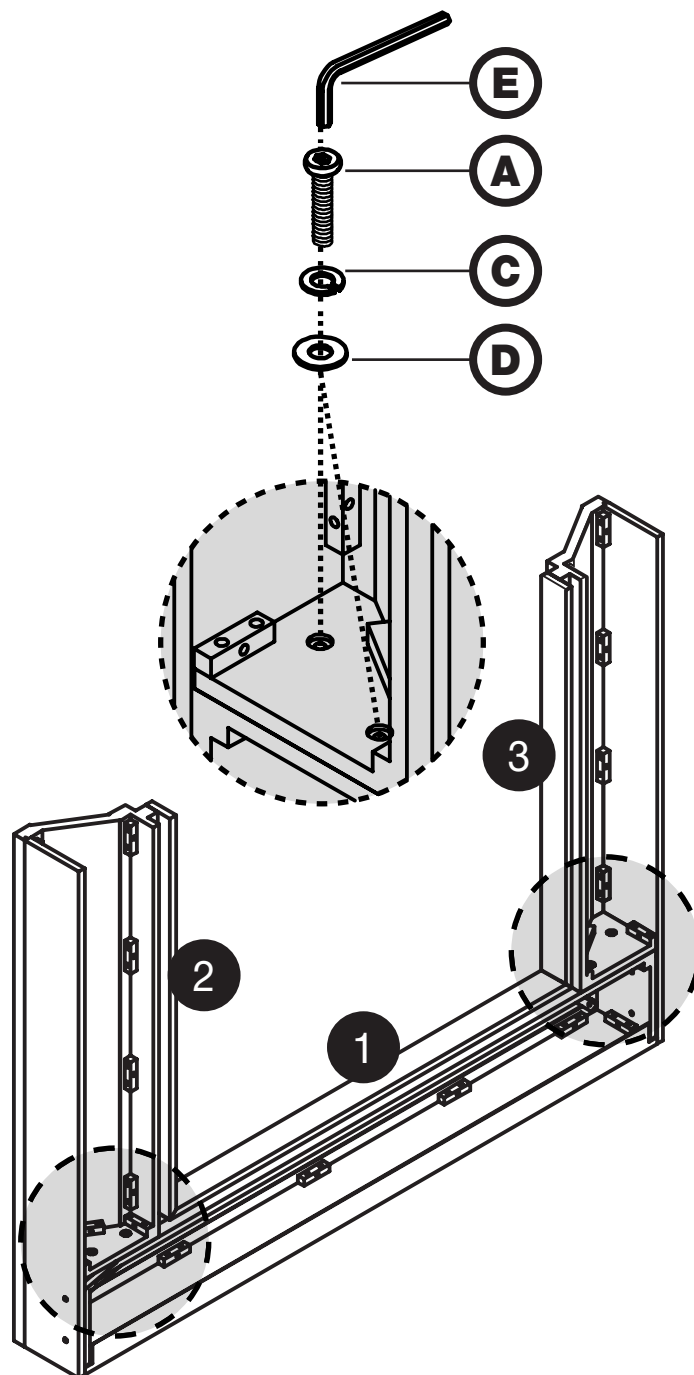
A | Bolt 1/4" x 1-3/4" | x4



C | Lock Washer 1/4" | x4



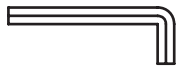
D | Flat Washer 1/4" | x4



1. Use 1-3/4" long Bolt **(A)**, Lock Washer **(C)**, and Flat Washer **(D)** to attach the Left Leg **(2)** and the Right Leg **(3)** to the Breast Plate **(1)** as pictured above.
2. Use Provided Allen Wrench **(E)** to tighten hardware.

Assembly Instructions

STEP 3



E | Allen Wrench



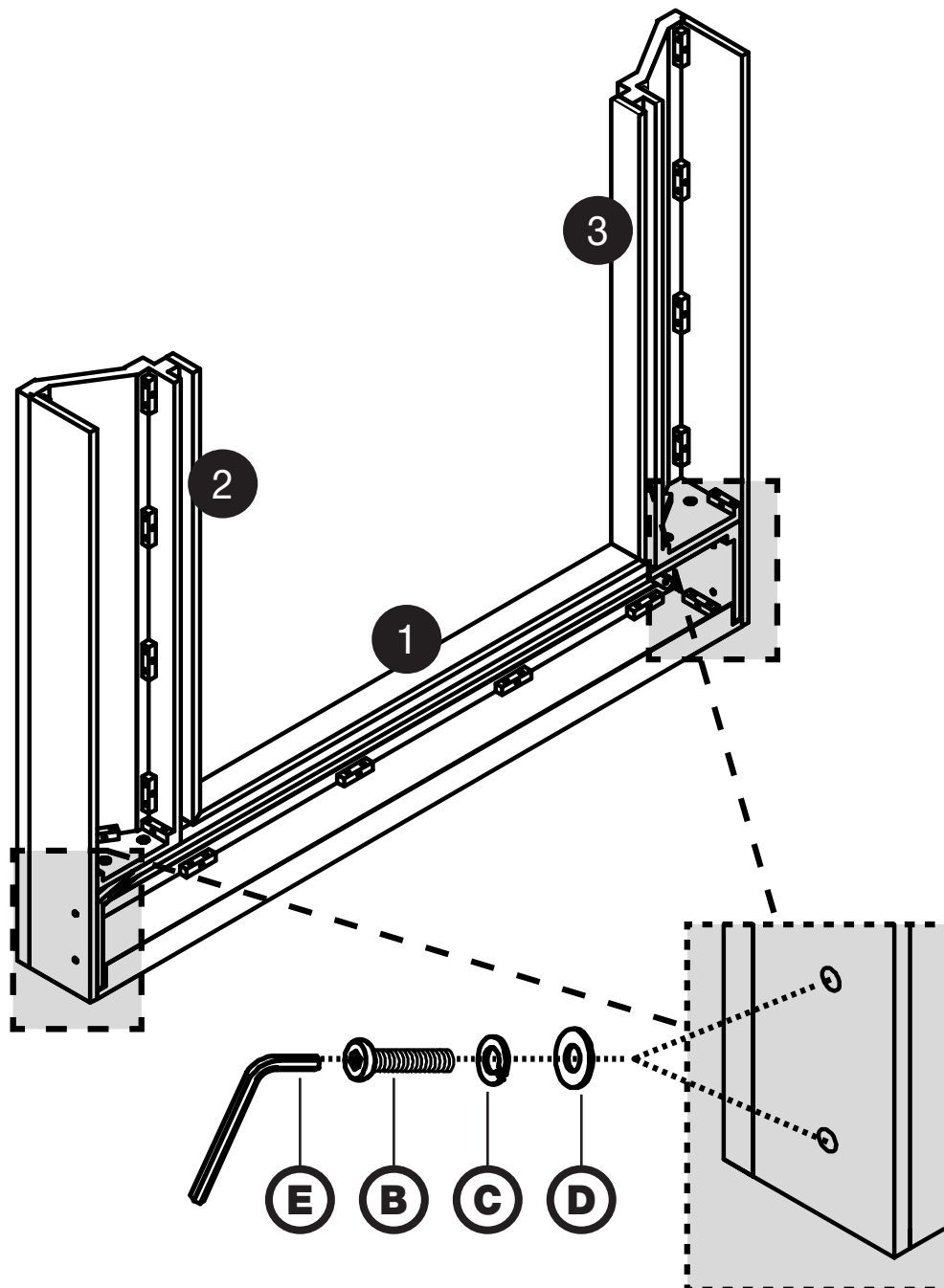
B | Bolt 1/4" x 1-1/4" | x4



C | Lock Washer 1/4" | x4



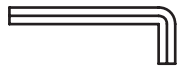
D | Flat Washer 1/4" | x4



1. Use 1-1/4" long Bolt (**B**), Lock Washer (**C**), and Flat Washer (**D**) to attach the Left Leg (**2**) and the Right Leg (**3**) to the Breast Plate (**1**) as pictured above.
2. Use Provided Allen Wrench (**E**) to tighten hardware.

Assembly Instructions

STEP 4



E | Allen Wrench



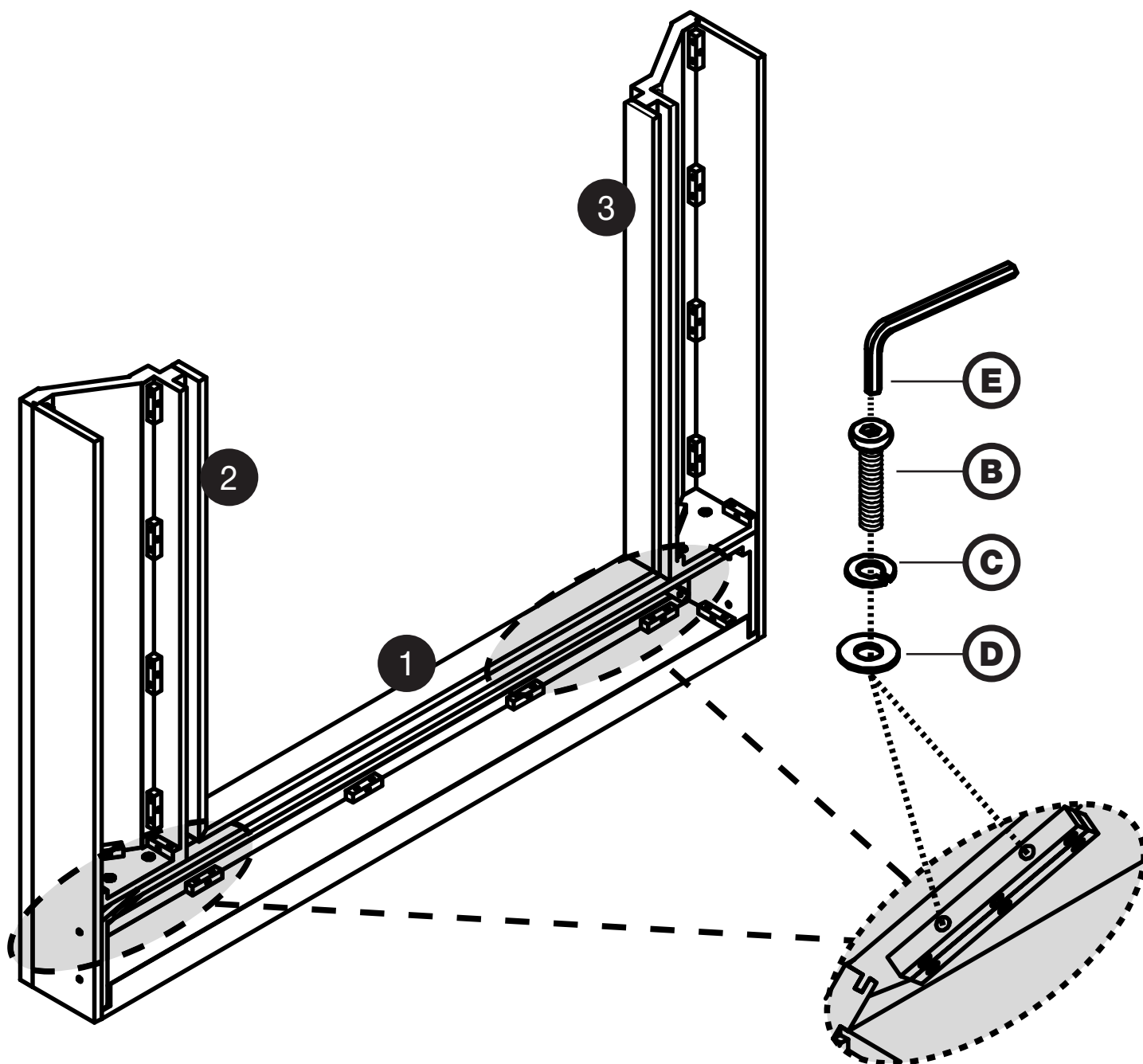
B | Bolt 1/4" x 1-1/4" | x4



C | Lock Washer 1/4" | x4



D | Flat Washer 1/4" | x4



1. Use 1-1/4" long Bolt (**B**), Lock Washer (**C**), and Flat Washer (**D**) to attach the Left Leg (**2**) and the Right Leg (**3**) to the Breast Plate (**1**) as pictured above.
2. Use Provided Allen Wrench (**E**) to tighten hardware.

Assembly Instructions

STEP 5

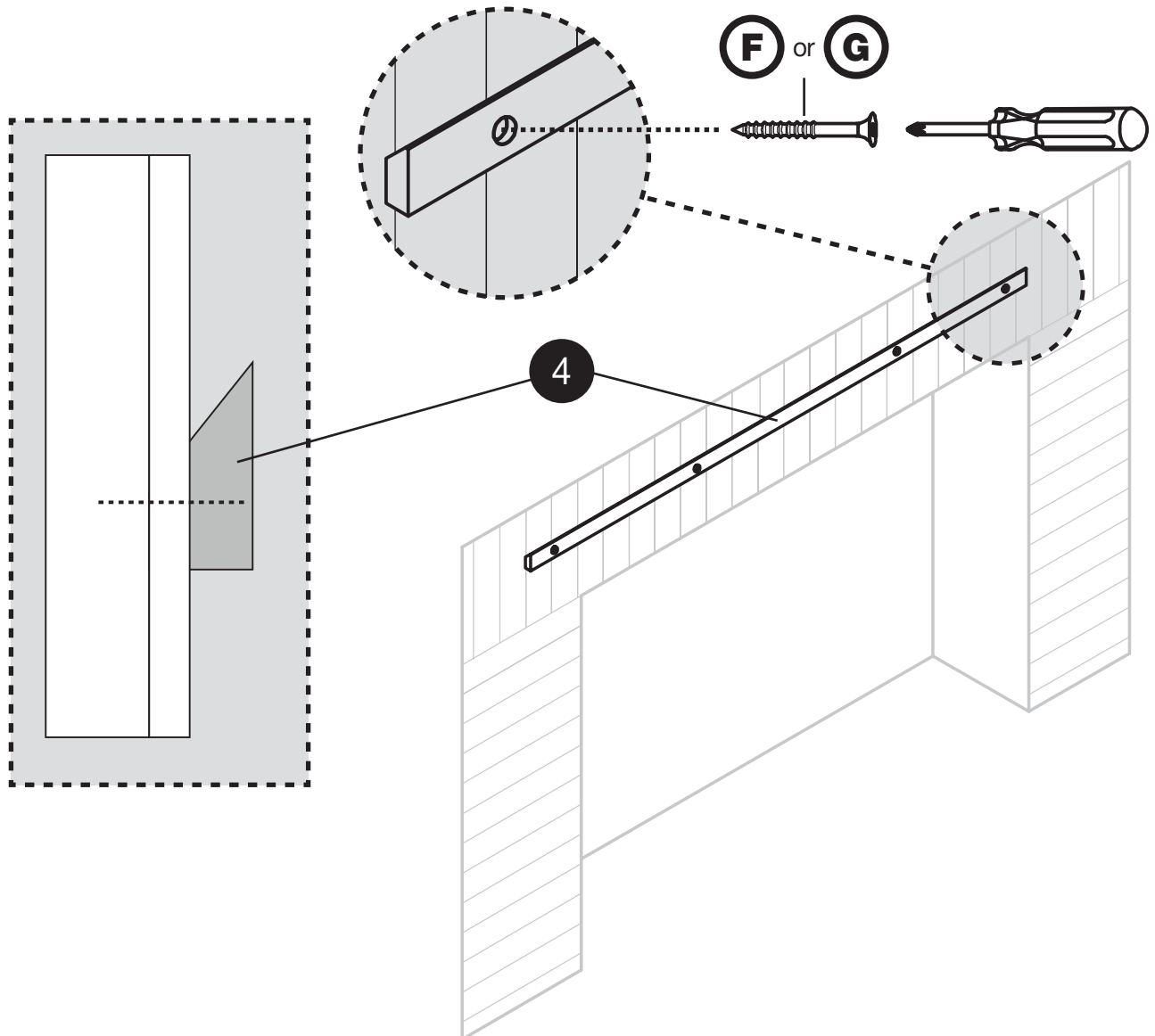


F | Screw #8 x 40mm | x4

OR



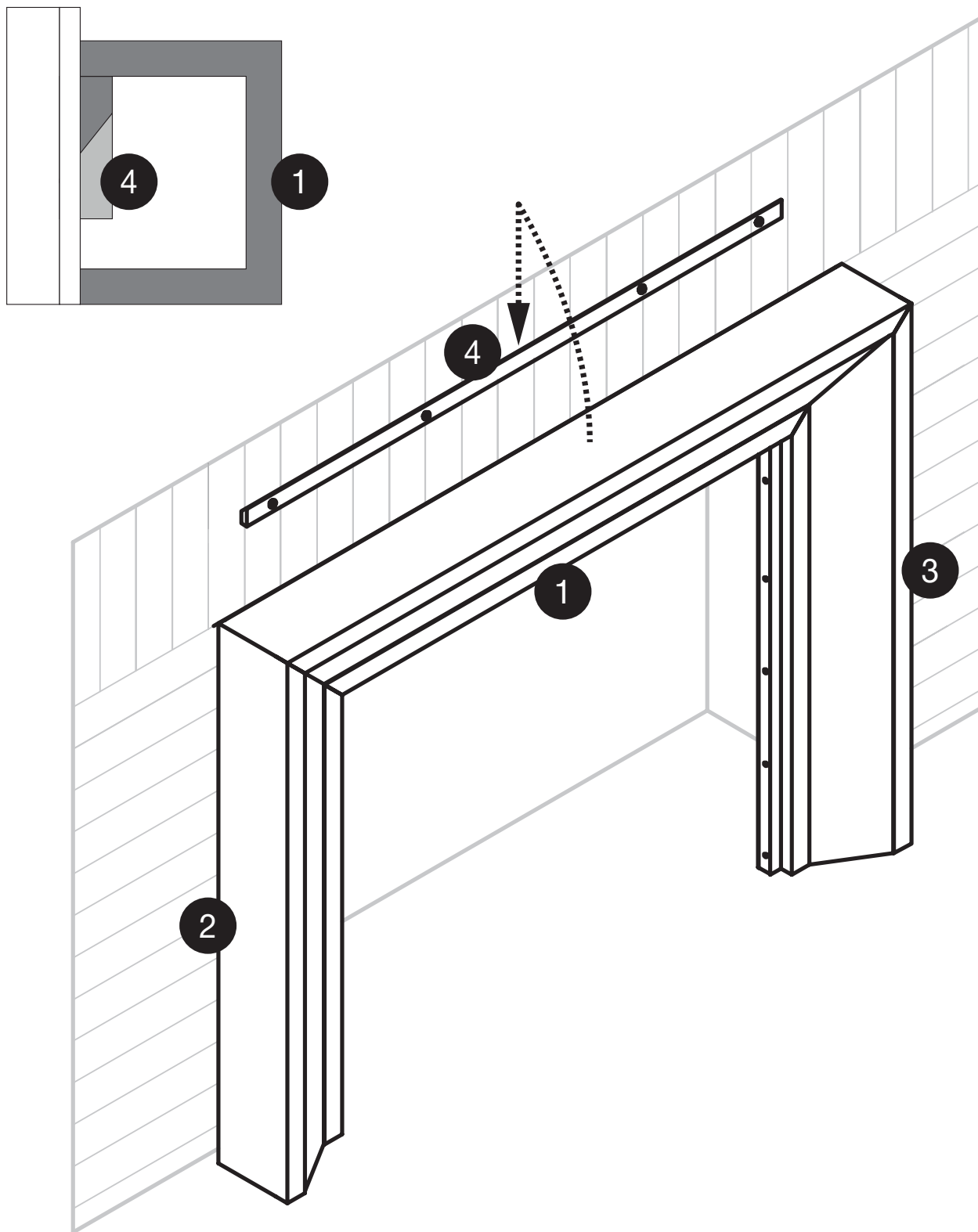
G | Screw #10 x 80mm | x4



1. With the Fireplace Mantel **(1-3)** upside down on a soft surface, hold the mounting board in position on the Breast Plate **(1)**. Measure from the top of the Breast Plate **(1)** to the bottom of the mounting board **(4)** and make note of this measurement.
2. Place the Fireplace Mantel **(1-3)** against the fireplace in the desired location. Draw a line on the wall along the top of the Fireplace Mantel Shelf. Remove the Fireplace Mantel from the wall. Using your noted measurement, measure and mark reference point for the bottom of the Mounting Board **(4)**. Mark the line at several points to ensure a level mount.
3. Locate and mark the location of the center of 3 studs (2x4 boards) inside the wall you intend to mount your mantel shelf.
4. Using either Screw **(F)** or Screw **(G)**, attach the French Cleat Mounting Board **(4)** to the wall.

Assembly Instructions

STEP 6



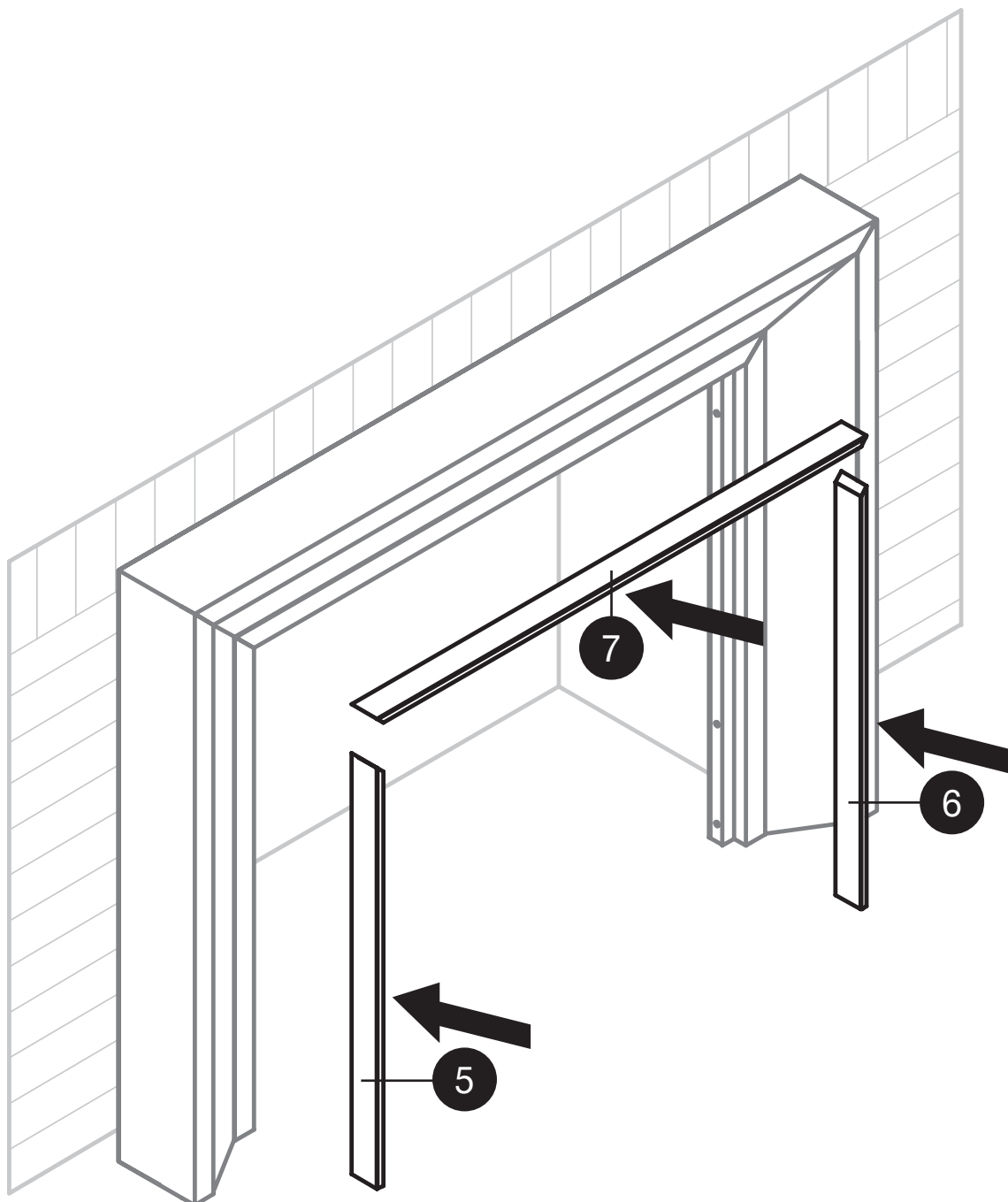
1. Lift and place the Fireplace Mantel **(1-3)** onto the French Cleat Mounting Board **(4)** and slide down until the shelf is tight against the wall.
2. Push the shelf tight against the wall and then push down firmly on the shelf to ensure the French cleat is properly connected.

Assembly Instructions

STEP 7



H | Small Nails



1. Install the Left Scribe Molding **(5)**, Right Scribe Molding **(6)**, and Top Scribe Molding **(7)** using the supplied small nails.

NOTE:

The edge of the shelf against the wall may not be tight against the wall across the whole length of the shelf. The wall may not be uniform and flat. If not, use caulk to fill the gap.



MODERN EMBER

Thank you for purchasing our Everly Mitered Surround!

Each unit has been manufactured to ensure safety and reliability.

Before first use, read the instructions carefully and keep it for further reference.

Questions, problems, missing parts?
Before returning to store, call Customer Service:

8am-5pm CST, Monday - Friday

Phone: 877-430-0703

Email: resolution@netdirectmerchants.com

Retain this manual for future use.

Don't forget to tag us!
#mantelsdirect
#modernember

