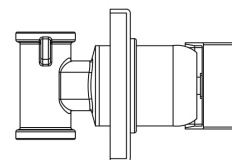
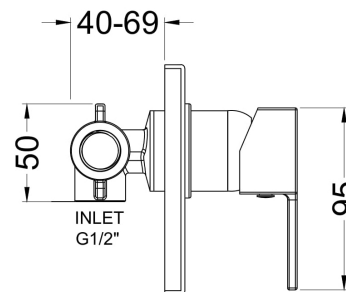
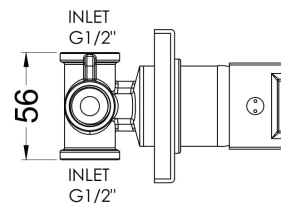
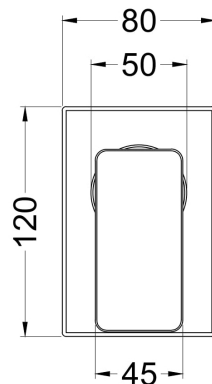
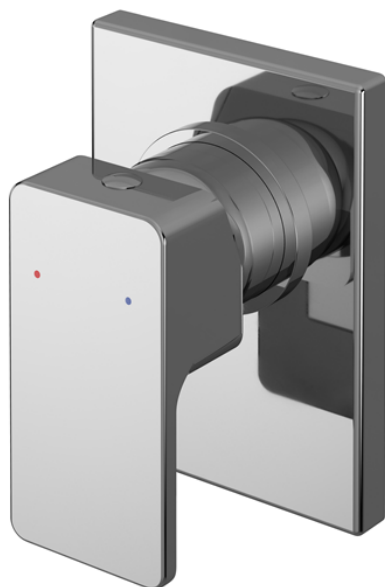


Sales Code: WINMV10

Description: Windon Manual Shower Valve



### Product Dimensions

|                   |      |
|-------------------|------|
| Length (mm):      |      |
| Width (mm):       | 80   |
| Height (mm):      | 120  |
| Depth (mm):       | 113  |
| Nett Weight (kg): | 1.07 |

### Packaging Dimensions

|                    |      |
|--------------------|------|
| Length (mm):       | 150  |
| Width (mm):        | 205  |
| Height (mm):       |      |
| Gross Weight (kg): | 1.07 |

### Packaging Data

|               |                     |
|---------------|---------------------|
| Box Colour:   | White Cardboard Box |
| Box Qty:      | 1                   |
| Label Size:   | 100 x 50            |
| Label Colour: | White Label         |
| Label Qty:    | 1                   |

### Outer Box Dimensions (If Applicable)

|                    |               |
|--------------------|---------------|
| Length (mm):       |               |
| Width (mm):        | 470           |
| Height (mm):       | 470           |
| Depth (mm):        | 400           |
| Gross Weight (kg): |               |
| Barcode:           | 5056211898450 |

### Product Details

|                           |   |
|---------------------------|---|
| Country of Origin:        | United Kingdom  |
| Fitting Instruction:      | Yes   |
| Product Material:         | Brass/ABS   |
| Mount Type:               | Recessed, Wall  |
| Outlet Elbow Supplied:    | No  |
| Easy Clean:               | Not Applicable  |
| Head Included:            | No  |
| Handset Included:         | No  |
| Body Jets Included:       | No  |
| No of Body Jets:          | Not Applicable  |
| Operating Pressure (bar): | 0.5   |
| Valve/Cartridge Type:     | Single Lever Cartridge  |
| Flow Rates (L/min):       | 0.1 bar: 3.4 0.5 bar: 7.9 1 bar: 11.2 2 bar: 15.9 3 bar: 19.5 |
| TMV2 Approved:            | No Approval No: N/A   |
| TMV3 Approved:            | No Approval No: N/A   |
| WRAS Approved:            | No Approval No: N/A   |
| Head Function:            | Not Applicable  |
| Handset Function:         | Not Applicable  |
| Body Jet Info:            | Not Applicable  |
| Pipe Size:                | 15 mm (1/2" Bsp)  |
| Pipe Centres:             | N/A   |
| Colour/Finish:            | Chrome  |
| Hose Included:            | Not Applicable  |
| No. of Outlets:           | 1   |