

Kenmore®/MD



Convertible Chest Freezer/Fridge 25 cu. ft.



Customer Assistance
1-800-265-8456
www.koolatron.com

KKCF25E-W
Use & Care Guide

SAFETY WARNINGS



WARNING! **RISK OF FIRE / FLAMMABLE MATERIALS**

This appliance is intended to be used in household and similar applications such as staff kitchen areas in shops, offices and other working environments; farm houses and by clients in hotels, motels and other residential type environments; bed and breakfast type environments; catering and similar non retail applications.

This appliance is not intended for use by persons (including children) with reduced physical, sensory or mental capabilities, or lack of experience and knowledge, unless they have been given supervision or instruction concerning use of the appliance by a person responsible for their safety.

Children should be supervised to ensure that they do not play with the appliance.

If the supply cord is damaged, it must be replaced by the manufacturer, its service agent or similarly qualified persons in order to avoid a hazard.

DO NOT store explosive substances such as aerosol cans with a flammable propellant in this appliance.

The appliance **MUST** be unplugged after use and before carrying out user maintenance on the appliance.

WARNING! Keep ventilation openings, in the appliance enclosure or in the built-in structure, clear of obstruction.

WARNING! Do not use mechanical devices or other means to accelerate the defrosting process, other than those recommended by the manufacturer.

SAFETY WARNINGS

WARNING! Do not damage the refrigerant circuit.

WARNING! Do not use electrical appliances inside the food storage compartments of the appliance, unless they are of the type recommended by the manufacturer.

WARNING! Properly dispose of the freezer according to local regulators for it use flammable blowing gas and refrigerant.

WARNING! When positioning the appliance, ensure the power cord is not trapped or damaged.

WARNING! Do not place multiple portable socket-outlets or portable power supplies at the rear of the appliance.

WARNING! To avoid a hazard due to instability of the appliance, it must be fixed in accordance with the instructions.

DO NOT use extension cords or ungrounded two prong adapters.

DANGER! Risk of child entrapment.

Before you throw away your old refrigerator or freezer:

- Take off the doors.
- Leave the shelves in place so that children may not easily climb inside.

DANGER! Refrigerant and cyclopentane foaming material used for the appliance are flammable.

Therefore, when the appliance is scrapped, must be kept away from any fire source and be recovered by a special recovering company with corresponding qualification other than be disposed by combustion, so as to prevent damage to the environment or any other harm.

The necessity that, for doors or lids fitted with locks and keys, the keys be kept out of the reach of children and not in the vicinity of the refrigerating appliance, in order to prevent children from being locked inside.

SAVE THESE INSTRUCTIONS

SAFETY WARNINGS

SAFETY WARNING SYMBOLS



Prohibition Symbol

This symbol indicates prohibited matters which the behaviors related to must be prohibited. Failure to follow instructions may result in damage to the product or endanger the user's personal safety.



Warning Symbol

This symbol indicates matters that must be complied with and which the behaviors related to must be carried out in strict accordance with the required operation.

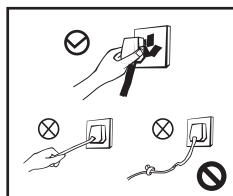
Failure to follow instructions may result in damage to the product or endanger the user's personal safety.



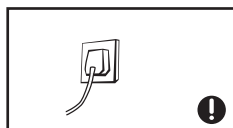
Note Symbol

This symbol indicates matters requiring attention, which the behaviors related to require special attention. If left unguarded, this could result in minor or moderate injuries or product damage.

This manual contains a lot of important safety information, please be sure to follow all of it.



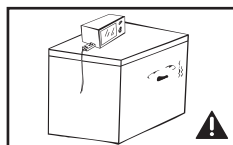
- Do not pull on the power line when unplugging the freezer. Be sure to hold the plug firmly and pull it straight out of the socket.
- For safe use, do not damage the power line at any time, and do not use the power line when it is broken or the plug is worn.
- If the power line is worn or damaged, it must be replaced at the manufacturer's designated service point.



- The power line plug should be kept in firm contact with the socket, otherwise it may cause a fire. Please ensure that the grounding electrode of the socket should have a reliable ground wire.

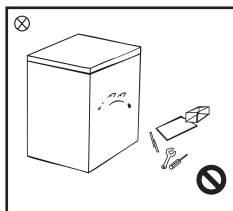


- When flammable gases, such as coal gas, leak, you should first close the valve that causes the gas leak, and then open the doors and windows. At this time, do not pull out the plugs of electrical appliances, such as freezer, so as to avoid electric sparks causing a fire.

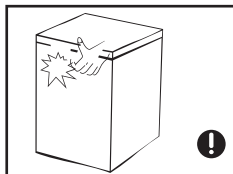


- For safety, it is recommended that electrical sockets, voltage stabilizers, rice cookers, microwave ovens, and other appliances are not placed on top of the freezer; and that appliances are not used in the food storage room of the appliance, except for the type recommended for use by the manufacturer.

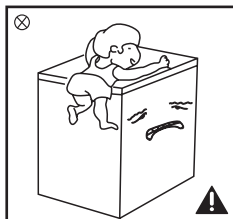
SAFETY WARNINGS



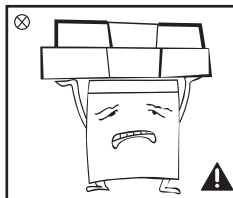
- It is strictly prohibited to privately disassemble and remodel the freezer, and to damage the refrigeration pipeline, and the maintenance of the freezer must be carried out by professional personnel.
- To avoid danger, if the supply cord is damaged, it must be replaced by the manufacturer, its maintenance department, and relevant professionals.



- There are small gaps between the doors and between the door and the freezer case, so be careful not to put your hand in these areas to prevent squeezing your fingers. When opening and closing the freezer door, do not use excessive force to prevent items from falling.
- After the freezer starts running, do not reach for food or containers in the freezer with wet hands, especially metal containers, to avoid frostbite on your hands.



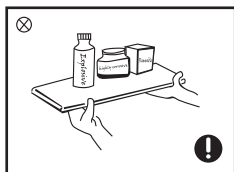
- Do not allow children to enter or climb on the freezer to avoid sealing children into the freezer or the freezer falling down, which may cause injury to children.
- Do not spray or rinse the freezer with water, and do not place the freezer in a damp, easily splashed place, and do not fill or load the freezer with water to avoid affecting the electrical insulation of the freezer, which may even lead to electric shock, fire and other accidents.



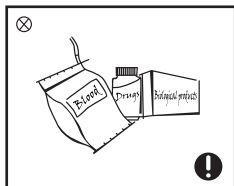
- Please do not place heavy objects on the top of the freezer, as it is easy to cause the objects to fall down when closing the door, resulting in accidental damage.

- Freezer might not operate consistently when sited for an extended period of time below the cold end of the range of temperatures for which the freezer appliance is designed.
- The fact that effervescent drinks should not be stored in food freezer compartments or cabinets or in low-temperature compartments or cabinets, and that some products such as water ices should not be consumed too cold;
- The need to not exceed the storage time recommended by the food manufacturers for any kind of food and particularly for commercially quick-frozen food in food-freezer and frozen-food storage compartments or cabinets;
- The precautions necessary to prevent an undue rise in the temperature of the frozen food while defrosting the refrigerating appliance, such as wrapping the frozen food in several layers of newspaper.
- The fact that a rise in temperature of the frozen food during manual defrosting, maintenance or cleaning could shorten the storage life.
- The necessity that, for doors or lids fitted with locks and keys, the keys be kept out of the reach of children and not in the vicinity of the freezer appliance, in order to prevent children from being locked inside.

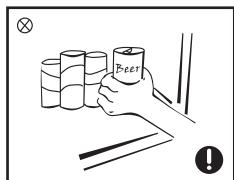
PLACEMENT OF ITEMS



- Please do not place flammable, explosive, volatile and highly corrosive items into the freezer, so as not to cause product damage or fire and other accidents.
- Do not place or use combustible items near the freezer to avoid a fire.



- This product is a household refrigeration appliance, and according to national standards, it is only suitable for storing food, and cannot be used for other purposes, such as storing blood, medicines and biological products.



- Please do not put bottled or closed containers of fluid items such as bottled beer, drinks, etc. into the freezer to avoid freezing and cracking, which may cause other losses.

THE PROPER DISPOSAL

The refrigerant and cyclopentane foaming material used in this freezer are flammable materials, and the used freezer should be isolated from sources of ignition and cannot be burned for disposal.

Please hand over to qualified professional recycling company for disposal to avoid harming the environment or causing other dangers.



When the freezer is abandoned and not in use, please remove the door of the freezer, and remove the door seal and shelf basket, and place the door and shelf basket in a suitable position, so as to avoid children from entering and playing, which may cause accidents.



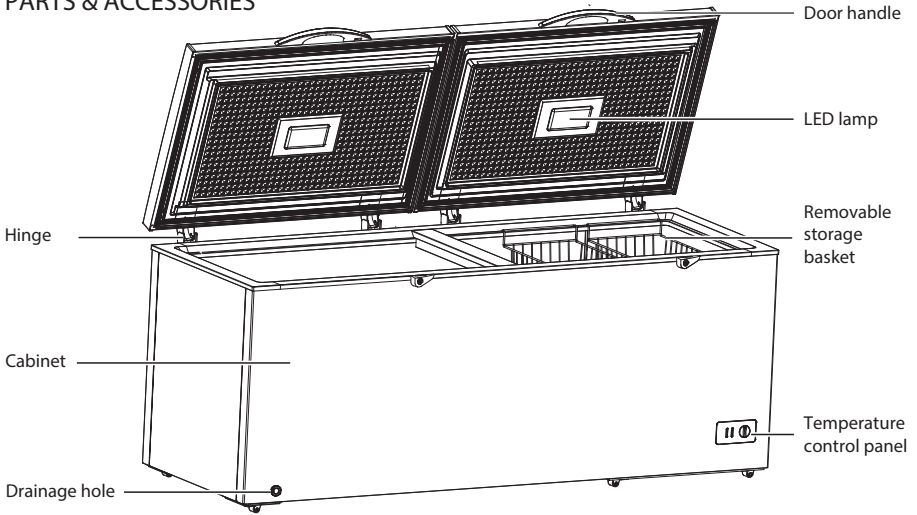
THE PROPER DISPOSAL OF THE UNIT

This symbol means this product is not suitable to be disposed of with other household waste. To avoid causing potential danger to environment or human health because of uncontrolled waste treatment, recycle the waste to promote the sustainable reuse of material.

In order to recycle the used devices, please use the recycle system or collecting system, or contact the product retailers. They can guarantee that the recycling process is environmental friendly and safe.

USING YOUR FREEZER

PARTS & ACCESSORIES



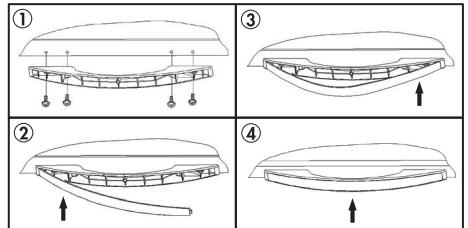
- The freezer can maintain the freshness of food for a long time at low temperatures. It is mainly used for storing frozen food and making ice cubes.
- The freezer is suitable for storing meat, fish, shrimp, and pastries that are not to be consumed in the short term. It is not suitable for storing fluids in bottled or sealed containers, such as bottled beer or beverages.
- Please note that the food should be consumed by its expiration date.
- The freezing speed of the product depends on the amount of food stored and the ambient temperature. If too much food at room temperature is placed at once, it is recommended to set the temperature controller to the maximum level and operate it for 24 hours in advance or use ice cubes for cooling. Moreover, large pieces of food should be divided into small pieces and stored separately to ensure proper freezing. Otherwise, certain parts of large or excessive food may not freeze properly, leading to potential spoilage.

REMINDER

Due to the wear and tear of the hinge during long-term opening and closing, the hinge's service life could be affected and noise may occur. It is recommended that users regularly apply lubricating oil to the hinges for maintenance, which can effectively eliminate noise and extend the service life of the hinges.

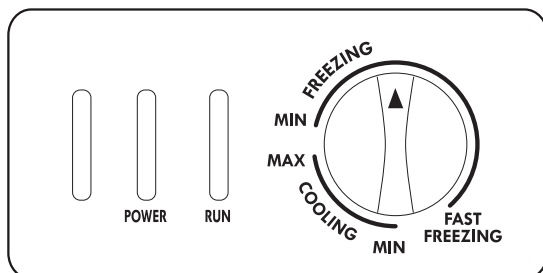
DOOR HANDLE INSTALLATION

1. Remove the handle base, the handle cover and the screws from the accessory bag. Remove the screw hole plugs from the lid and attach the handle base to the lid using the screws.
2. Insert one end of the handle cover into the side of the handle base.
3. Insert the other end of the handle cover into the handle base.
4. Press the handle into the base until it clicks. Repeat this process for both handles



USING YOUR FREEZER

TEMPERATURE CONTROL PANEL



- **FREEZER MODE**

To use the appliance as a freezer, set the thermostat dial in the "FREEZING" range.

Using this setting allows the appliance to store frozen foods and ice. The internal temperature will be between 6.8°F and 11.2°F (-14°C and -24°C). Do not place liquid items in sealed bottles or containers into the appliance when it is being used as a freezer to avoid damage caused by expansion and cracking of the container. While set as a freezer this model will perform in ambient temperatures between 0°F and 110°F (-17°C and 43°C).

- **REFRIGERATOR MODE**

To use the appliance as a refrigerator, set the thermostat dial in the "COOLING" range. Using this setting allows the appliance to store fresh food and beverages. The internal temperature will be between 32°F and 46.4°F (0 and 8°C). There are refrigerant lines in the cabinet walls that will get very cold. When using the appliance as a refrigerator, keep food items away from the cabinet walls to avoid freezing food. While set as a refrigerator the ambient temperature must fall within 50°F and 109°F (10°C and 43°C).

IMPORTANT

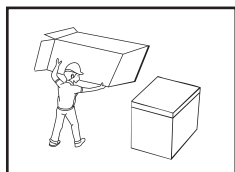
- MIN indicates the warmest setting.
- MAX indicates the coldest setting.
- Setting the thermostat dial in the middle of the MIN-MAX range should be sufficient for regular home use.
- Setting the thermostat to MAX in the "FREEZING" range will cause the compressor to run continuously and will make the interior very cold. It is not recommended to run the appliance at this setting for long periods of time.
- The temperature inside the appliance can vary based on ambient room temperature, the frequency that the lid is opened and the amount of fresh food that has recently been added to the appliance.
- Do not overload the appliance as this can affect performance.
- Do not freeze large quantities of fresh food at the same time.

CHANGING THE LIGHT (optional)

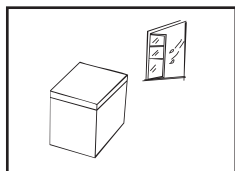
The LED light must be replaced by a professional from the manufacturer, its maintenance department or other similar departments.

USING YOUR FREEZER

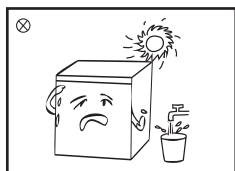
PLACEMENT OF THE FREEZER



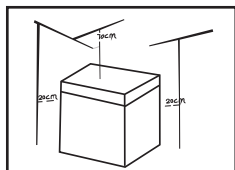
- Before using the freezer, please remove all the package, which includes the base pad, the foam cushion block in the freezer and adhesive tape, etc. and tear off the protective film on the door body and case.



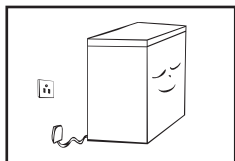
- Place the freezer in a well-ventilated indoor area with a flat and sturdy ground.



- Select the place that is far away from the heat source and direct sunlight. Do not place it in damp or watery areas to prevent rusting or weakening the insulation effect.



- The top space of the freezer should be greater than 28" / 70 cm and the distance between the sides, back of the freezer and the wall should be greater than 8" / 20 cm, so as to facilitate the opening and closing of the freezer door and heat dissipation.



- After transportation, please let the freezer stand for at least 2 hours before connecting to the power supply, otherwise it may cause performance degradation or damage to the freezer.
- Before storing fresh or frozen food in the freezer, run the freezer for 2 to 3 hours; in hot summer days, run the freezer for 4 hours in advance.
- During a power outage or cleaning, unplug and plug in again after a 5-minute interval to prevent damage to the compressor.

ENERGY SAVING TIPS

- The appliance should be located in the coolest area of the room, away from heat producing appliances or heating ducts, and out of the direct sunlight.
- Let hot foods cool to room temperature before placing in the appliance.
- Overloading the appliance forces the compressor to run longer.
- Foods that freeze too slowly may lose quality, or spoil.
- Be sure to wrap foods properly, and wipe containers dry before placing them in the appliance. This cuts down on frost build-up inside the appliance.
- The shelving basket should not be lined with aluminum foil, wax paper, or paper toweling. Liners interfere with cold air circulation, making the appliance less efficient.
- Organize and label food to reduce door openings and extended searches.
Remove as many items as needed at one time, and close the door as soon as possible.

CLEANING & MAINTENANCE

CLEANING

- Please clean the dust behind and around the freezer frequently to improve heat dissipation and save energy.
- Regularly inspect the door seal to ensure it is clean and free of debris. Clean the door seal with a soft cloth dipped in soapy water or diluted cleaning agent.
- The interior of the freezer should be regularly cleaned to avoid odor.
- Before cleaning the interior of the freezer, please turn the power off, take out all the food, hanging baskets and containers.
- Use a soft cloth or sponge to clean the inner liner of the freezer. You can use two tablespoons of baking soda and one quart of warm water solution to clean it first, then rinse it with clean water, then wipe it clean. After cleaning, leave the door open and let it dry naturally before connecting to the power supply.
- For areas inside the freezer that are not easy to clean (e.g. gaps or corners), it is recommended to use soft cloths, soft brushes, etc. and some necessary aids (e.g. thin sticks, etc.) to carry out regular cleaning to ensure that there are no accumulation of pollutants or bacteria.
- Do not use soaps, detergents, spray cleaners, etc. to clean the liner as these may create odors or contamination.
- Clean the hanging basket with a soft cloth dipped in soapy water or diluted cleaning agent, then dry it with a soft cloth or air dry naturally.
- Wipe the outside surface of the freezer with a soft cloth moistened with soapy water, detergent, etc., then dry with a soft cloth.
- Do not use hard hairbrush, steel wire ball, steel wire brush, abrasive (such as toothpaste), organic solvent (such as alcohol, acetone, isoamyl acetate, etc.), boiling water, or acidic or alkaline substances during cleaning, as it may damage the surface and inner liner of the freezer. Organic solvents such as boiling water and benzene may deform or damage plastic parts.
- Do not rinse directly with water or other liquids during cleaning to avoid short circuit or affecting electrical insulation performance after soaking.



When defrosting and cleaning the freezer, unplug the power supply first.

DEFROST

- Freezers need to be manually defrosted. When defrosting, please unplug the power plug first, open the freezer door, and take out indoor food, hanging baskets, etc.; Open the drain hole and outlet hole (and place a water container at the outlet hole) to allow the indoor ice and frost to naturally melt, and dry the defrosting water with a dry soft cloth. Once the frost softens, you can use an ice shovel to speed up deicing.
- When defrosting, please keep the removed food in a cool place before removing the accessories.



Do not use mechanical devices or other means of acceleration other than those recommended by the manufacturer. The refrigeration circuit must not be damaged.

WHEN NOT IN USE

- **POWER INTERRUPTIONS** - Even in the summer, food can still be stored for several hours. During this period, the number of opening door should be reduced, and fresh food should not be added. If outage is for a prolonged period, inspect and discard spoiled or thawed food in freezer. Clean freezer before reusing.
- **LONG ABSENCES** - Empty the freezer completely and unplug the power cord. Clean and dry the interior thoroughly. To prevent odor and mold growth, leave the door slightly open.
- **MOVING** - Do not invert, transport horizontally, or vibrate the freezer during transportation. The tilt angle during transportation should not exceed 45°. Do not grab the door or hinge while moving.



Once the freezer is activated, it is best to use it continuously, and under normal circumstances, do not stop using the freezer, so as not to affect the service life.

TROUBLESHOOTING GUIDE

You can solve many common appliance problems easily, saving you the cost of a possible service call. Try the suggestions below to see if you can solve the problem. If there is no improvement, please call Koolatron Customer Assistance.

The freezer does not work	<p>Check the power supply is connected and the plug is firmly inserted The voltage is too low. The freezer temperature control is set at "OFF". Is there a power outage or partial circuit tripping?</p>
The freezer smells bad	<p>Odorous food should be tightly packed. Check for rotten food. The interior of the freezer needs to be cleaned.</p>
Compressor runs too frequently or for too long	<p>It is normal for freezers to work for a long time due to high temperatures in summer. Do not put too much food into the freezer at one time. Put the food into the freezer after it has cooled down. The door is open too often. The frost layer of the freezer is too thick. Defrosting is required.</p>
The freezer light does not light up	<p>Check the freezer is powered on. The indicator light is damaged.</p>
The freezer door cannot be closed correctly	<p>A food package is jamming the door. Too much food has been put in. The freezer is not level.</p>
Loud noise	<p>Check to assure that the freezer is level. Check the basket is placed in the normal position.</p>
It is difficult to open the freezer for a short time	<p>After the refrigeration of the freezer, there is a pressure difference between the outside and inside of the unit, which can cause a temporary difficulty in opening the door. This is normal.</p>
Case emits heat External condensation	<p>When the freezer is running, the outer shell of the case will generate heat, even generating more heat in the early stages of operation or in summer. This is caused by the heat dissipation of the condenser and is a normal. When the environmental humidity is high, there may be condensation on the surface of the case and the door seal, which is normal. Wipe with a dry towel.</p>
Airflow sound Buzzing sound Clattering sound	<p>The refrigerant circulating in the refrigeration pipeline will produce bubbling or gurgling sounds, which is a normal sound and will not affect the cooling effect. The compressor produces a buzzing sound during operation, and the sound is loud when starting or stopping. The electromagnetic valve or electric switching valve will make a clattering sound, which is a normal and will not affect its use.</p>

WARRANTY

2 Year Limited Warranty

FOR TWO YEARS from the date of sale this product is warranted against defects in material or workmanship.

WITH PROOF OF SALE a defective product will be repaired or replaced free of charge.

The Kenmore brand is used under license. Direct all claims for warranty service to Koolatron Customer Assistance, call 1-800-265-8456 or email service@koolatron.com

This warranty covers manufacturer's defects including electrical and mechanical defects provided the appliance is correctly assembled, operated and maintained according to the supplied instructions. It does not cover damage caused by accident, misuse or abuse including overheating, unauthorized repairs or alterations, or use with a voltage converter or aftermarket accessories, and it does not apply to scratches, stains, discoloration or other surface damage that does not impair the product function. This warranty is void if the appliance is ever used for purposes other than private household use.

Koolatron Corporation
4320 Federal Drive, Batavia, NY 14020 U.S.A.
139 Copernicus Blvd., Brantford, ON N3P1N4 Canada

Kenmore and the Kenmore logo are registered trademarks
to Transform SR Brands Management LLC
and are used under license by Koolatron Corporation

H1S410
03/2024-v1