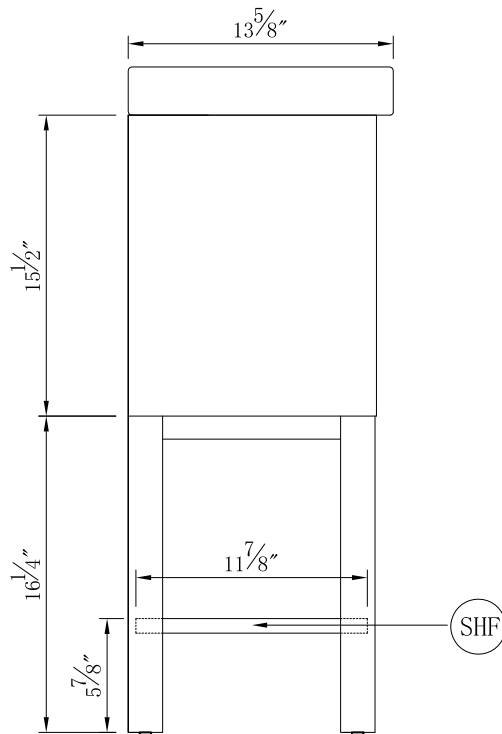
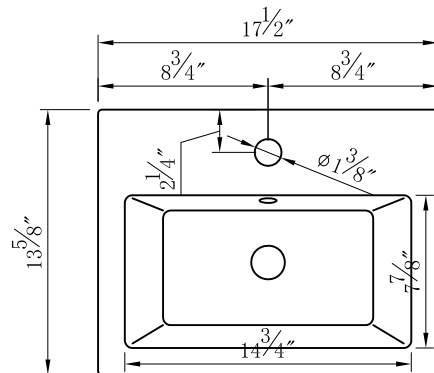


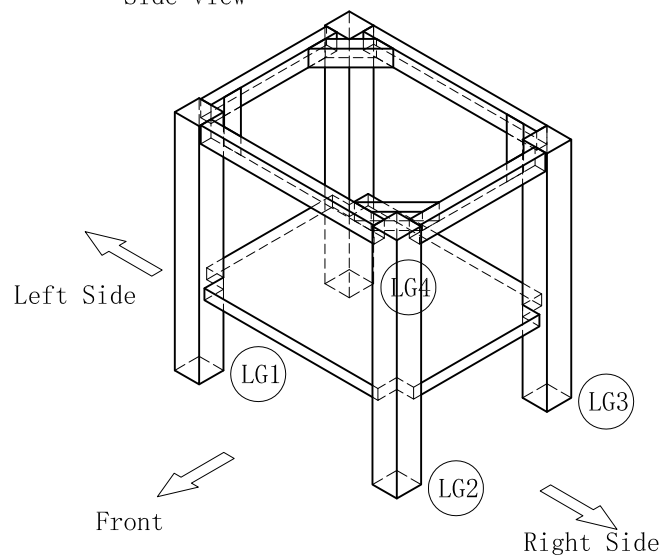
Front view



Side view



Top view



KD leg orientation diagram

QUANTITY:

CHECKED BY:

FOR PROPOSAL ONLY ALL  
DIMENSIONS TO BE VERIFIED

PROJECT:

COLOR:

FINISH:  
Grey

REVISIONS

1	
2	
3	
4	
5	
6	

		Finish	Grey	Mirror type	N/A	Beveled glass	N/A	Frame material	Solid wood and MDF
Solid wood construction	Solid wood legs	Drawers Included	No	Number of Drawers	0	Joinery Type	N/A	Drawer railing	N/A
Drawer Width	N/A	Drawer Depth	N/A	Drawer Height	N/A	Shelves	Yes	Number of Shelves	1
Doors included	Yes	Number of Doors	1	Finished Back	Yes	Hardware finish	Chrome	Assembly	No
Countertop included	Yes	Countertop material	Porcelain	Number of Sinks accommodated	1	Sink material	Porcelain	Sink Width	14-3/4"
Sink Depth	7-7/8"	Sink Height	3-3/8"	Sink hole size	1.75	Mounting type	Free-Standing	Backsplash	No
Backsplash length	N/A	Backsplash width	N/A	Backsplash height	N/A	Drain assembly included	NO	Faucet included	NO
Faucet type	NO	Faucet hole size	1-3/8"	Faucet hole spacing	N/A	Product Width	17-1/2"	Product Depth	13-5/8"
Product Height	34-1/4"	Package LENGTH (inches)	22-1/2"	Packaged WIDTH (inches)	19-3/8"	Packaged Height(inches)	26-3/8"	Package Weight (lbs)	55 lbs
Product Weight	41 lbs	Shipment Type	Small Parcel	Vanity countertop width (in)	13-5/8"	Vanity: Countertop finish	White	glass top tempered	NO
Table/Desk: top maximum weight	33 lbs	Table: seating capacity	N/A	upholstery color	N/A	upholstery Pattern	N/A	cushion material	N/A
Vanity: base finish	Grey	Powder coated finish	NO	base material	MDF	top material	Porcelain	wood species	Poplar
tip over restraint strap	NO	shape of top	Rectangle	lift top	NO	shelf material	MDF	adjustable shelves	NO
Drawer Handle designs	Knob	safety stop	No	felt lined drawers	NO	drawer glide extension	N/A	drawer glide material	N/A
drawer dividers	N/A	Drawer Interior finish	N/A	Ball Bearing Glides	N/A	soft close drawer glides	N/A	Number of cabinets	1
shelf height	5-7/8"	shelf width	15-1/8"	shelf depth	11-7/8"	Shelf thickness	3/4"	Any certification?	NO
California Proposition 65 warning required	YES	Drawers Interior Height	N/A	Drawer Interior Width	N/A	Drawer Interior Depth	N/A	cabinet interior height	14-3/4"
cabinet interior width	14-7/8"	cabinet interior depth	12-1/8"	leg height	5-1/8"	leg width	1-3/4"	leg depth	1-3/4"
glass finish	N/A	stackable	NO	leg design	Straight Legs	Armoires: ring slots	N/A	Armoires: hooks	N/A
armoires: mirror dimensions	N/A	door thickness	3/4"	false drawers?	NO	Sink mounting type	Vanity sink	# of faucet holes	1

**QUANTITY:**

**CHECKED BY:**

**FOR PROPOSAL ONLY ALL DIMENSIONS TO BE VERIFIED**

**PROJECT:**

**COLOR:**

**FINISH:**  
Grey

**REVISIONS**

