

WARNINGS Please read the following information before installing and using your Heated Towel Rack.

- These units should be installed by a certified electrician.
- The unit requires a 120 volt, 60Hz power source and should be installed on a protected circuit.
- Plug-in units should be connected to a grounded outlet with a minimum rating of 10 amps.
- Follow installation instructions to ensure unit is securely fixed to wall.
- Unit is designed for drying towels. Under no circumstances should anybody climb on or hang on unit.
- Unit is intended for indoor use only. Do not place units inside a shower, sauna, steam room, or wherever unit would be exposed to water.

CAUTION

- As this is a heating device, the surface temperature can increase depending on the ambient temperature and the towels applied to the unit.
- Overloading the unit will cause the unit to become extremely hot and may result in a burn if touched and/or damage to towels.
- The fasteners provided with the installation kit are for convenience only and are not suitable for all installation conditions.
- It is the ultimate responsibility of the installer to ensure suitable mounting hardware is used.

OPERATING INSTRUCTION

- After installation, connect the electric power and turn on switch.
- The indicator light will glow blue and the towel warmer will start to heat —Allow 10-20 minutes to heat up.
- This towel warmer has been designed to run continuously — Turn off the switch or unplug the cord when the towel warmer is not in use for long periods of time.
- Never use an extension cord for Plug-in models.
- The towel warmer features an Integrated on/off switch.
- Remove plastic cover after installation.
- Press switch to power on unit.
- Switch will illuminate when on.

CARE & MAINTENANCE

- The unit is constructed from extremely durable stainless steel. To maintain a good appearance, follow these simple instructions:
- For routine cleaning, simply switch off the unit, allow to cool to room temperature, wipe with a damp cloth.
- Under no circumstances should abrasive cleaners be used to clean the unit.

Contact us

Email: support@SHARNDY.com

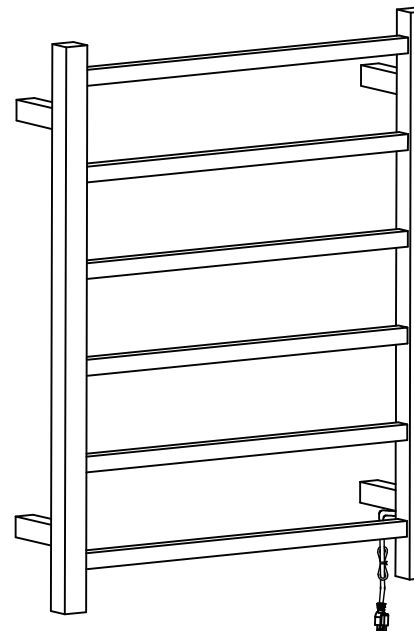
Website: www.sharndy.com

Warranty: Three year limited warranty. With proof of purchase, will apply if all Terms and Conditions of sale are met and Installation Instructions are adhered to.

! CAUTION — SURFACE OF UNIT IS HOT WHEN ON !

SHARNDY®

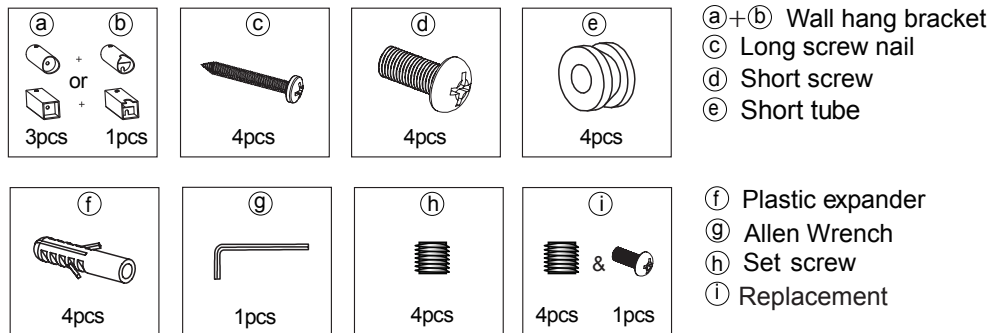
INSTALLATION GUIDE



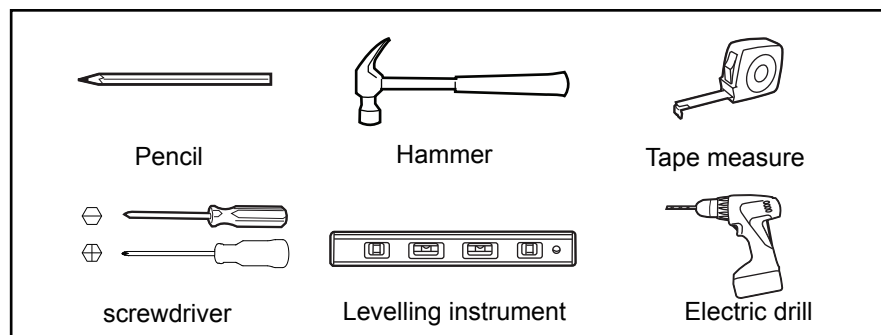
SPECIFICATIONS	
Model	ETW13
Size	H26.77*W20.47*D4.33 inches
Rated Voltage	120V, 60Hz
Rated Power	68W
Control Mode	Blue Metal on/off Switch
Length of the cable	4.8 ft / 1.6 m
Warranty	3 years

! CAUTION — SURFACE OF UNIT IS HOT WHEN ON !

INCLUDED COMPONENTS

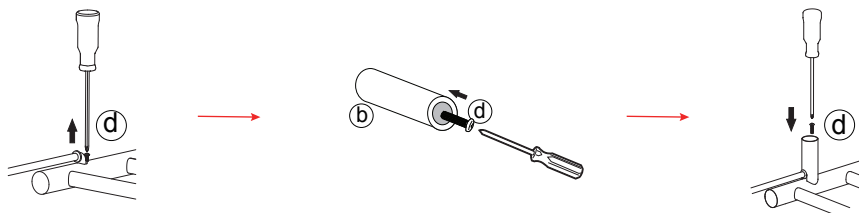


TOOLS REQUIRED



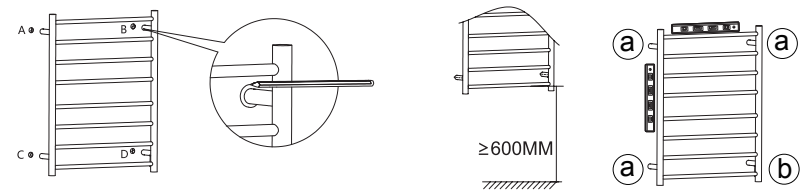
BEFORE STARTING ASSEMBLY MAKE SURE ALL COMPONENTS LISTED ARE IN THE PACKAGE

Installation Steps

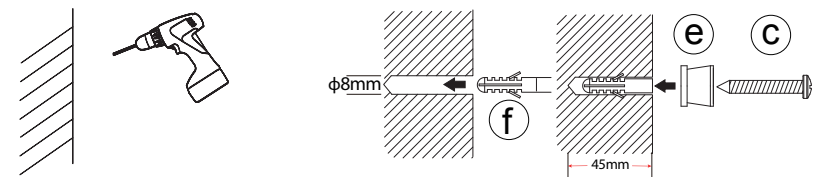


1. Remove the short screw (d) near the power cable of towel warmer.
2. Insert the short screw (d) through the hole of the wall bracket (b).
3. Screw down the short screw (d) by screwdriver to fix the wall bracket (b) on the back of towel warmer.
Note: When installing the unit, the set screw of the bracket should towards the floor.
4. Fix the remaining three brackets (a) to the towel warmer by repeating step 2 to 3.

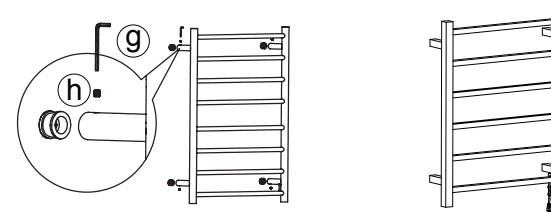
! CAUTION — SURFACE OF UNIT IS HOT WHEN ON !



5. Use tape measure to measure and confirm the distance between these four wall bracket, and then mark A, B, C, D on the wall.
Suggest it is installed at least 600mm above the floor level, and try to use the levelling instrument to test the levelness and perpendicularity.



6. Drill holes on the wall marked A, B, C, D.
7. Use hammer to knock plastic expander (f) into wall completely. And the insert long screw (c) through short tube (e), then screw into plastic expander (f).



7. Use hammer to knock plastic expander (f) into wall completely. and the insert long screw (c) through short tube (e), then screw into plastic expander (f).
8. Install the bracket onto the short tube (e), install the set screw (h) into the hole of the bracket (a+b) using the allen wrench; fix the bracket (a+b) onto the short tube (e).
9. Fix the remaining three brackets by repeating step 8.
10. The installation is finished. Then wipe the tubs cleanly.

! CAUTION — SURFACE OF UNIT IS HOT WHEN ON !