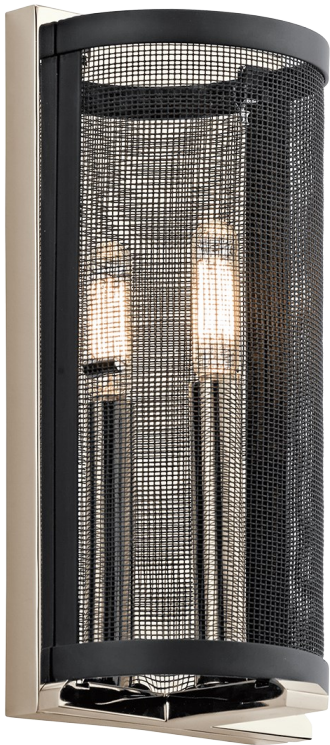


# 1 Light Wall Sconce in Polished Nickel

Polished Nickel



## Dimensions

Height	12.00"
Width	6.00"

## Alternate Lamps

Lamp Included	Bulb Listing	Light Source	Max Wattage/Range	Bulb Product ID	Dimming
No	Alternate	INCA	40W		

Project Name: \_\_\_\_\_  
Location: \_\_\_\_\_  
Type: \_\_\_\_\_  
Qty: \_\_\_\_\_  
Comments: \_\_\_\_\_

## Ordering Information

Finish	Polished Nickel
--------	-----------------

## Dimensions

Extension	4.00"
Height from center of Wall opening	6.00"
Base Backplate	6.00 X 12.00
Weight	2.75 LBS

## Specifications

Material	Steel
Shade Description	Black Steel Mesh
Shade Dimensions	5.25 DIA x 11.25

## Electrical

Voltage	120V
---------	------

## Qualifications

Safety Rated	Damp
Warranty	

## Primary Lamping

Light Source	Incandescent
Lamp Included	Not Included
Number of Lights/LEDs	1
Max or Nominal Watt	60W
Socket Wire	105
Socket Type	Candelabra
Lamp Type	B
Bulb Product ID	

**Notes:**  
1) Information provided is subject to change without notice.  
All values are design or typical values when measured under laboratory conditions.  
2) Incandescent Equivalent: The incandescent equivalent as presented is an approximate number and is for reference only.