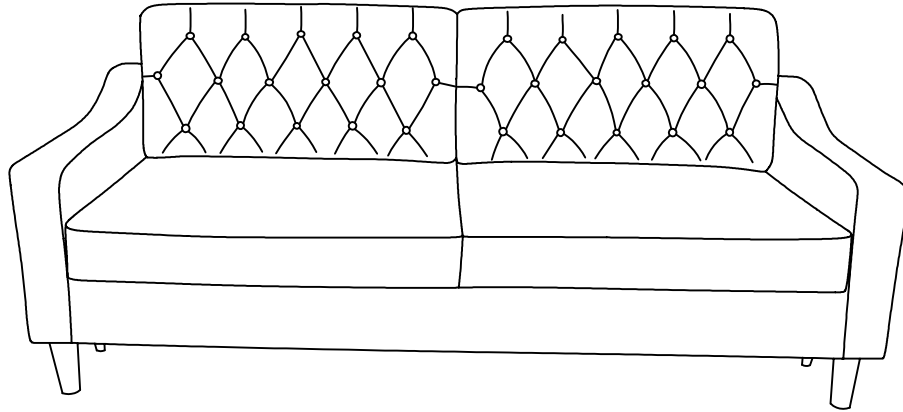
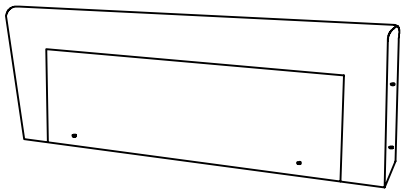


# ASSEMBLY INSTRUCTIONS

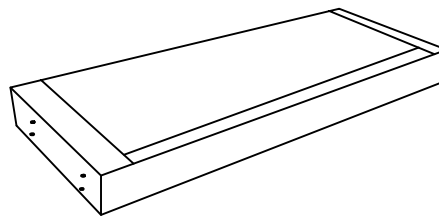
MODEL NO.: SF2022



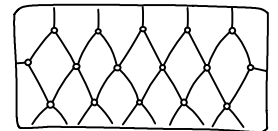
## PARTS AND HARDWARE:



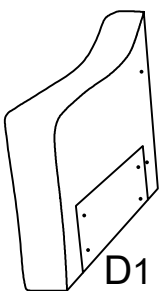
A (back) x1pc



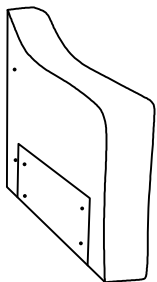
B (seat) x1pc



C (back cushion)  
x2pcs

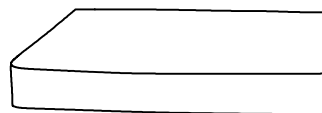


D1



D2

D (arms) x1 set



E (seat cushion)  
x2pcs



F x14pcs



G x14pcs



H x14pcs



J x1pc



K x4pcs



L x1pc

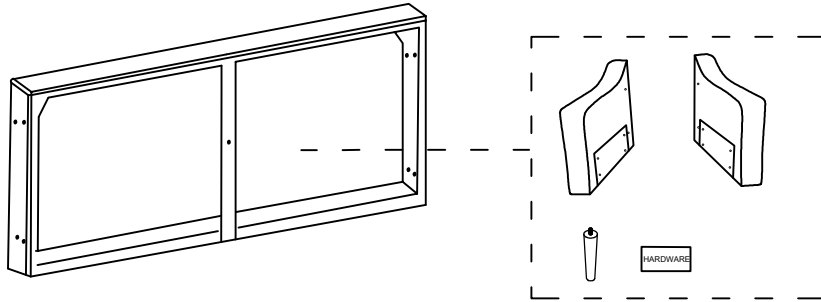


## CAUTION:

**PLEASE DO NOT OPEN COMPRESSED PLASTIC CUSHION BACK UNTIL YOUR SOFA FRAME IS COMPLETELY ASSEMBLED, OTHERWISE, IT CAN'T BE REPACKED IN ORIGINAL PACKING WAY TO RETURN.**

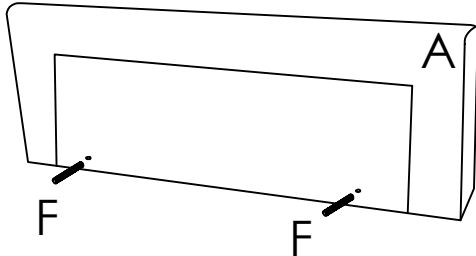
## STEP 1

Please take out the arms, legs and hardware from bottom of sofa

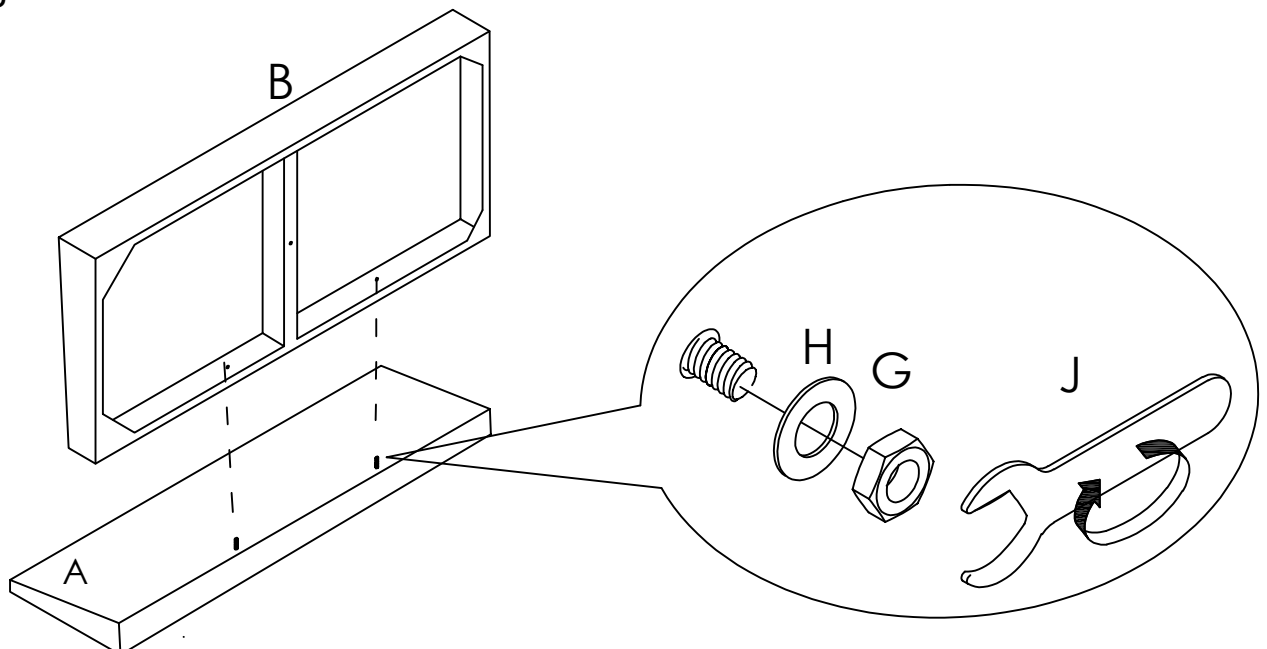


## STEP 2

Screw in the back frame "A" about 1 or 2cm

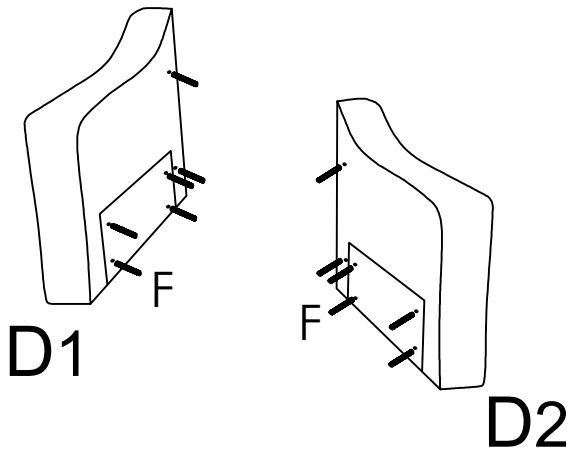


Insert the back frame with screws to the seat frame, Put the washer, and tighten the nut with wrench from the bottom



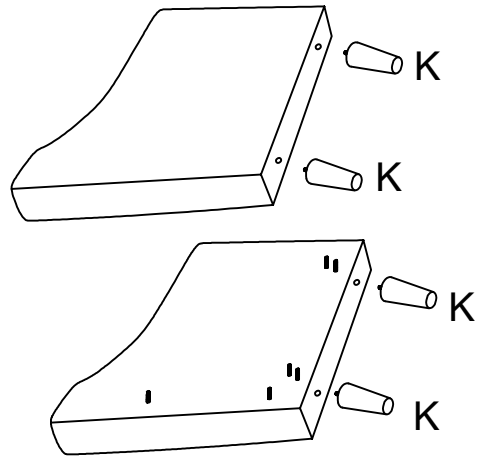
### STEP 3

Screw in the arm "D" about 1or 2cm.  
(6 screws in each arms.)



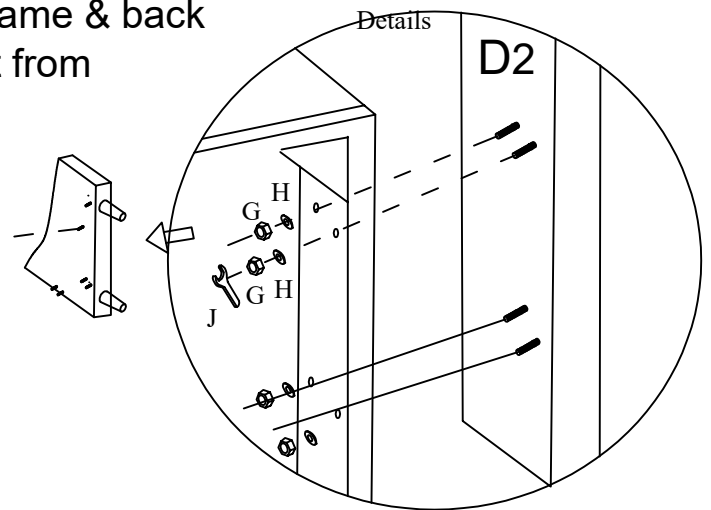
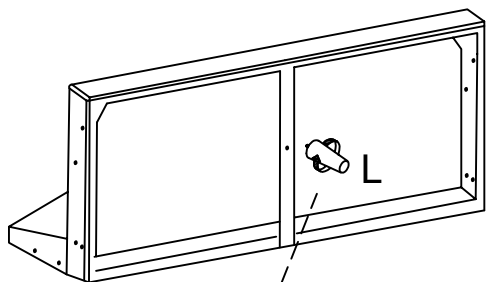
### STEP 4

Assemble 4 legs "K" to the bottom of  
arms.



### STEP 5

Insert the frame with screws to the seat frame & back  
frame. Put the washer and tighten the nut from  
the bottom of seat frame. (4 screws)

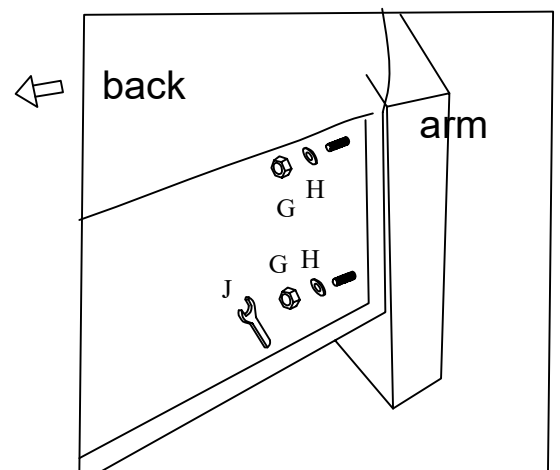


### STEP 6

Assemble legs "L" to the bottom.

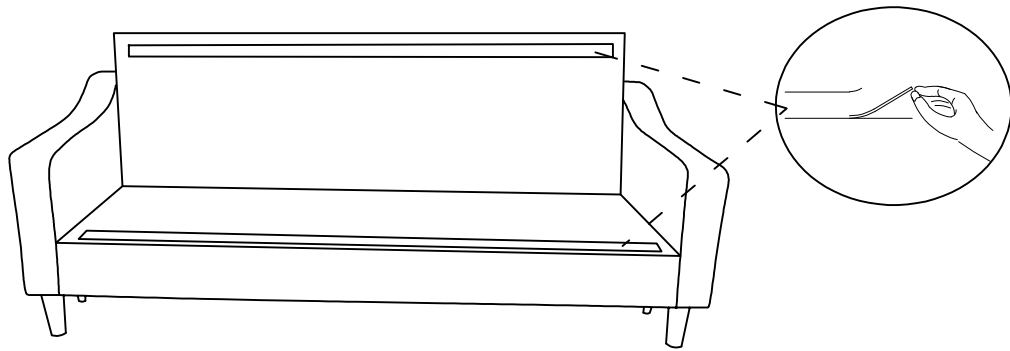
### STEP 7

Put the washer and tighten the nut from  
the back of back frame. (2 screws)



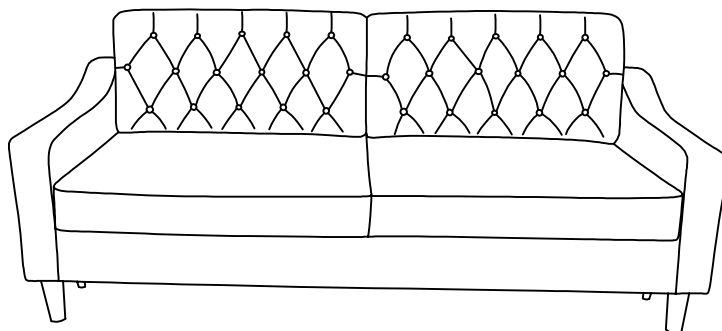
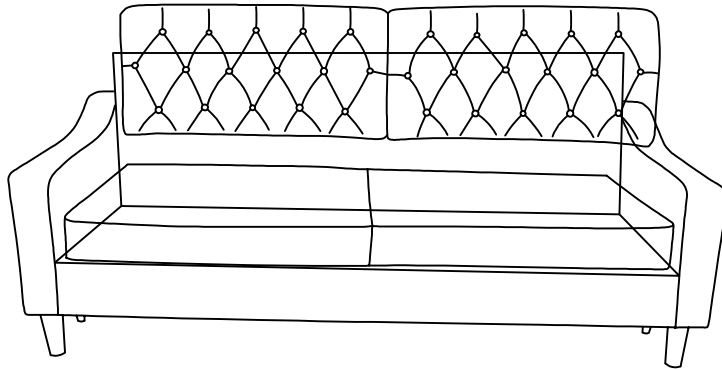
## STEP 8

Remove the black strips on seat frame & back frame



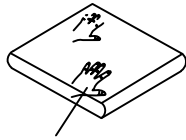
## STEP 9

Put the seat cushion and back cushions on sofa,  
press them to stuck with the velcro,  
then the assembly is finished.



**TIPS:**

- 1, Please do not open the compress packaging until your sofa frame is completely assembled.**
- 2, Compress cushions or pillows need to be fully fluffed within 72 hours for your perfect use.**
- 3, Please keep children away from plastic bag or any small pieces of stuff.**
- 4, After assembly is completed, don't forget to pat the back cushions and seat cushions, make them recovering better. And wait 72 hours for fully rebound.**

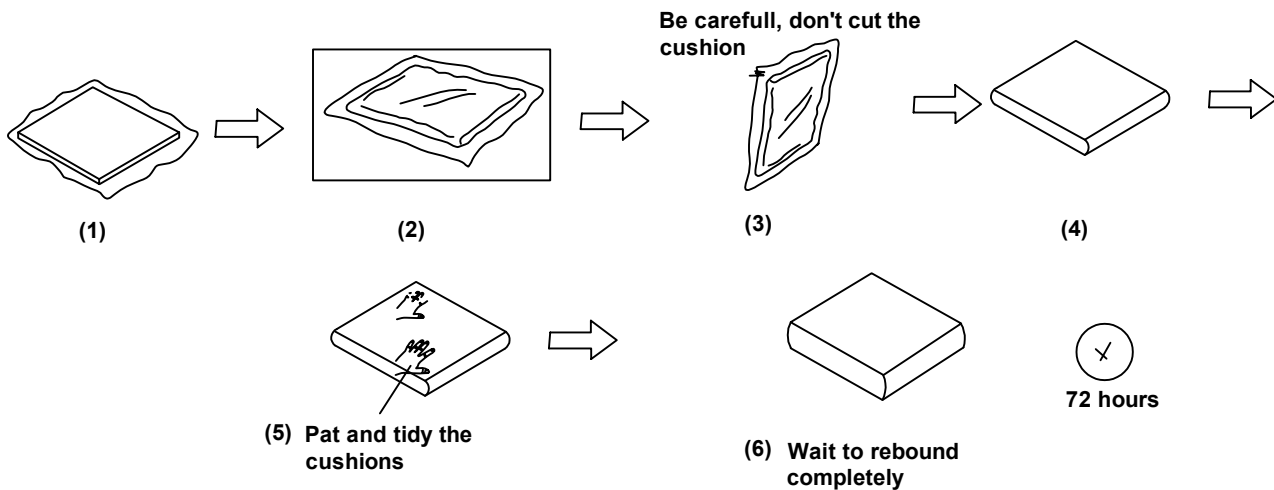


Pat and tidy the cushions

- 5, Cushions should be regularly maintained for perfect use.**

**STEPS for compressed pack:**

- (1) open the carton -- (2) take out the compressed pack -- (3) cut from edge and take out the cushion -- (4) Put the cushion on floor -- (5) Pat and tidy the cushion -- (6) Wait to rebound completely after 72 hours.**



**CAUTION:**

**PLEASE DO NOT OPEN COMPRESSED PLASTIC CUSHION BACK UNTIL YOUR SOFA FRAME IS COMPLETELY ASSEMBLED, OTHERWISE, IT CAN'T BE REPACKED IN ORIGINAL PACKING WAY TO RETURN.**