

Instruction Manual

Please save this manual for future reference.

Product Name:	Resin Puppies and Water Pump Outdoor Patio Fountain with LED Light
----------------------	--

	Description	Accessories standards and type	Quantity
01	Fountain		1
02	Pump w/ Adaptor	PT333-LV	1
03	LED Connector		1

Tools required for assembly: No tools required for assembly.

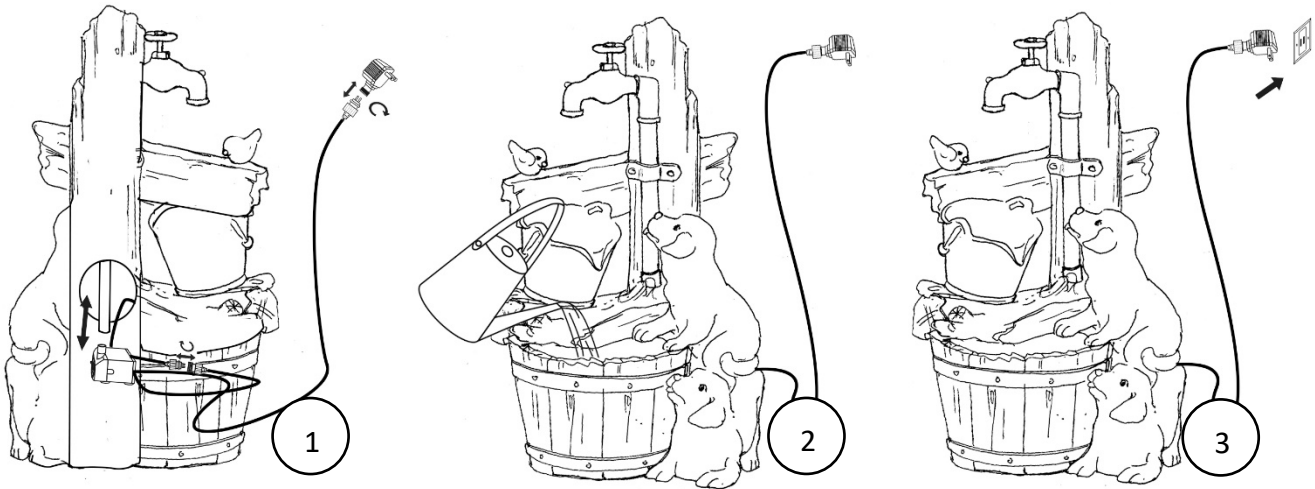
Assembly Instructions:

1. Unpack the contents of the box and check to make sure that all items are accounted for and in good condition.
2. Select a flat, level surface for the assembly and final location of your fountain.
3. Place the fountain on a flat, level surface. From the opening at the back of the fountain base, insert the water supply tube into the pump outlet. Place the pump upright in the basin and draw the pump power cord out of the fountain back. Insert LED connector to cord with the pump and twist tight. (①)
4. Add clean water into the basin. The water level should be approximately 1.18in (30mm) lower than the edge of the basin. The pump will be submerged in the water. (②)
5. Connect the pump power cord to a ground fault circuit interrupter (GFCI) outlet and the product will begin to function as intended. (③)
6. To eliminate the possibility of water damage around your fountain, check for leaks and excessive splashing after the initial setup of your fountain. It is highly recommended that this fountain be placed in an area where it cannot be damaged.
7. Do not leave your fountain running for extended periods of time when no one is present to observe the performance.
8. Check the area around your fountain on a regular basis to ensure that there is no leakage.
9. Please refresh the fountain with water each week to ensure it in good condition.
10. Do not add any harmful chemicals to the water as it may alter the paint finish.

Instruction Manual

Please save this manual for future reference.

Product Name:	Resin Puppies and Water Pump Outdoor Patio Fountain with LED Light
----------------------	--



Note: The above diagram is for illustrative purposes only.

Pump Instructions:



Special Warnings and Cautions:

CAUTION:

- The pump has been evaluated for use with water only.
- Risk of electric shock. Do not remove cord and strain relief. Do not connect conduit to pump.
- Do not use the pump in water exceeding 30°C / 86°F.
- Do not use the pump in flammable liquids.
- Do not use the pump for industrial purposes.
- Do not use the pump in vehicles or on ships or aircraft or swimming pools.
- Do not use the pump in location where special conditions prevail, such as the presence of a corrosive or explosive atmosphere (dust, vapor or gas).
- Do not let the pump run dry. Pump must be completely submerged for proper operation and cooling.
- Do not lift the pump by its power cord.
- Keep the plug dry. Do not expose the plug to water or steam.
- Before connecting to the power source, make sure that the pump is assembled and completely submerged in water.
- Always disconnect the pump from the power source before performing any maintenance on the pump, lights (if equipped), or fountain.
- Do not exceed the voltage shown on the pump.

Instruction Manual

Please save this manual for future reference.

Product Name:	Resin Puppies and Water Pump Outdoor Patio Fountain with LED Light
----------------------	--

- Check the water level regularly to ensure the pump is completely submerged during operation. The pump should be fully submerged during operation. Do not add water while operating the product. Always disconnect the pump from the power source before adding water.

MAINTENANCE OF YOUR FOUNTAIN:

- Keep water clean - using clean water will reduce mineral deposits and improve water clarity.
- Clean the fountain periodically to prevent mineral deposits and contamination. Use warm soapy water and a stiff brush for heavily stained surfaces. **Do not use harsh chemicals as this will damage the finished surface and void the warranty.**
- Add clean water periodically to ensure that the pump is fully submersed in water.
- Disconnect the power and empty the basin if the fountain will not be used for an extended time.
- If installed outdoors and in a freeze-area of the country, ensure that all water is removed and the unit is completely dry. **This product is NOT to be operated below 41°F (5°C) freeze damage may occur.**

WARNINGS:

1. To reduce the risk of electric shock, connect only to a properly grounded, grounding type receptacle.
2. To reduce the risk of electric shock, use only on portable self-contained fountains no larger than 5 feet in any dimension.
3. Do not exceed the voltage shown on the pump.
4. Always disconnect the pump from the power source prior to beginning any maintenance or work on the pump or fountain.
5. Inspect the power cord for damage before installation and/or maintenance. Replace the entire pump if damage is found.
6. For pumps with a 3-prong, grounded type plug, do not remove the grounding pin from the plug on the power cord.

PUMP ASSEMBLY INSTRUCTIONS:

Remove the pump from the package and untie the power cord.

1. Place the pump in the desired location in your pond or fountain ensuring that it is completely submerged in the water. If the pump is to be used in a pond, raise the pump off of the pond floor to ensure that it is above any dirt that will collect, as this will adversely affect the performance of the pump.
2. Adjust the flow rate (if applicable) to the maximum (+) position.
3. Connect the power cord from the pump to a properly grounded, grounding type receptacle (GFCI).
4. If necessary, readjust the flow rate to the desired level (remember to always disconnect from the power source before handling the pump).

Instruction Manual

Please save this manual for future reference.

Product Name:	Resin Puppies and Water Pump Outdoor Patio Fountain with LED Light
----------------------	--

CARE & MAINTENANCE:

1. Keep the water clean – clean water will prolong the useful life of your pump.
2. Use a pre-filter on your pump if available.
3. Regular cleaning of the pump will be necessary depending upon the environment in which it is operated. Clean the pump when it is visibly soiled or when a noticeable drop in performance is detected. **Failure to clean the pump will result in overheating of the pump and the voiding of the warranty!**
4. Before cleaning, always disconnect the pump from the power source.
5. Disassemble the pump by removing the inlet screen & the impeller housing. Remove the impeller/rotor assembly by gently pulling on the impeller blades. Use a soft cloth or brush to clean the area inside of the pump where the impeller/rotor assembly was. Clean the inlet screen, impeller housing & impeller in warm soapy water. Reassemble the pump and inspect for proper operation.

TIPS AND TROUBLESHOOTING:

1. Ensure that the pump's flow control switch is set to maximum (+) before operating. Once the flow is established, the pump can be adjusted downward to the desired level.
2. If the pump operates, but there is no flow, check to ensure the pump is fully submerged.
3. If the pump operates, but there is no flow, check the supply tubing for kinks and correct.
4. If the pump operates, but there is no flow, and if the pump is submerged and there are no kinks in the supply tubing, lift the pump from the water. Remove supply tubing at pump outlet and clean tubing inside and out if necessary. Reset pump in water (outlet side up) and once water begins to flow, re-attach the supply tubing.

SAVE THESE INSTRUCTIONS – This manual contains important safety and operating instructions for power units.