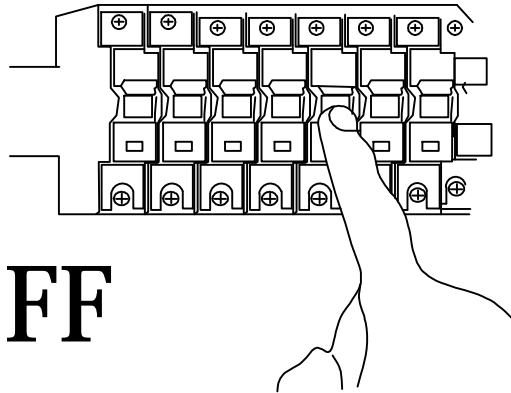


Installation

1

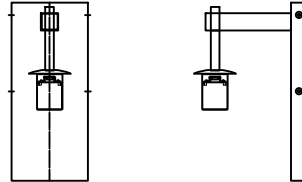


STEPS

Turn off the power

2

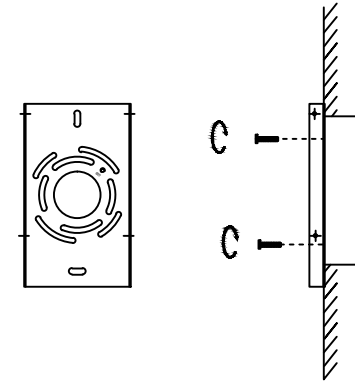
① Take out the lamp body and check if the accessories are complete



STEPS

And then proceed to the next step, as shown in Figure 3

3

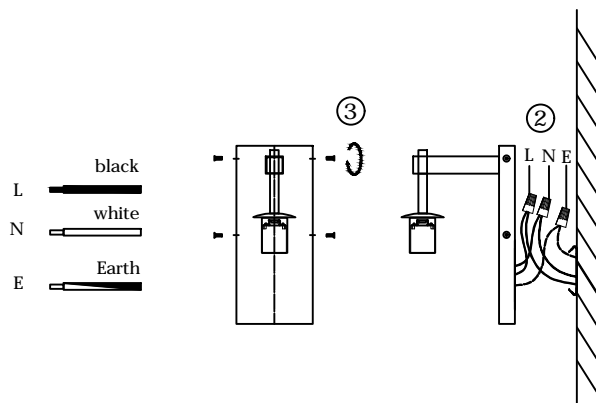


STEPS

Install the hanging board on the wall, and then proceed to the next step, as shown in Figure 4

4

- ② Connect the power wire of lamp body to the reserved Power cable, pay attention to the positive and negative poles
- ③ Fix the lamp body on the hanging board with screws

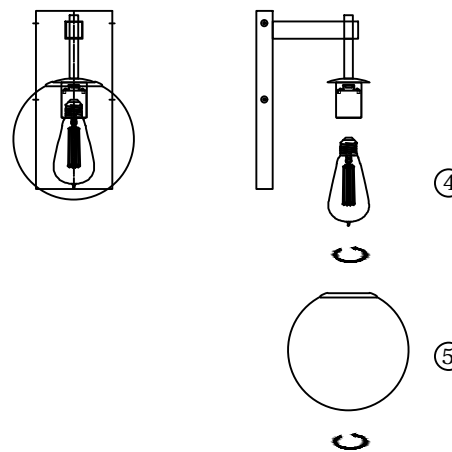


STEPS

And then proceed to the next step, as shown in Figure 5

5

- ④ Twist the light bulb onto the lamp body
- ⑤ Twist the glass onto the lamp body



STEPS

The installation is complete

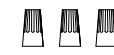
Caution:

Advertencia:

- 1.Voltage: 110V-130V
- 2.Bulb Model: E12 / MAX-40W
- 3.Before installation, please check whether the accessories are complete,If you have any problem, please contact our customer service in time
- 4.Before installation, please cut off the power supply to prevent electric shock.
- 5.Please be sure the installation according to the company's instructions.



Screw



Wire connector



Instruction