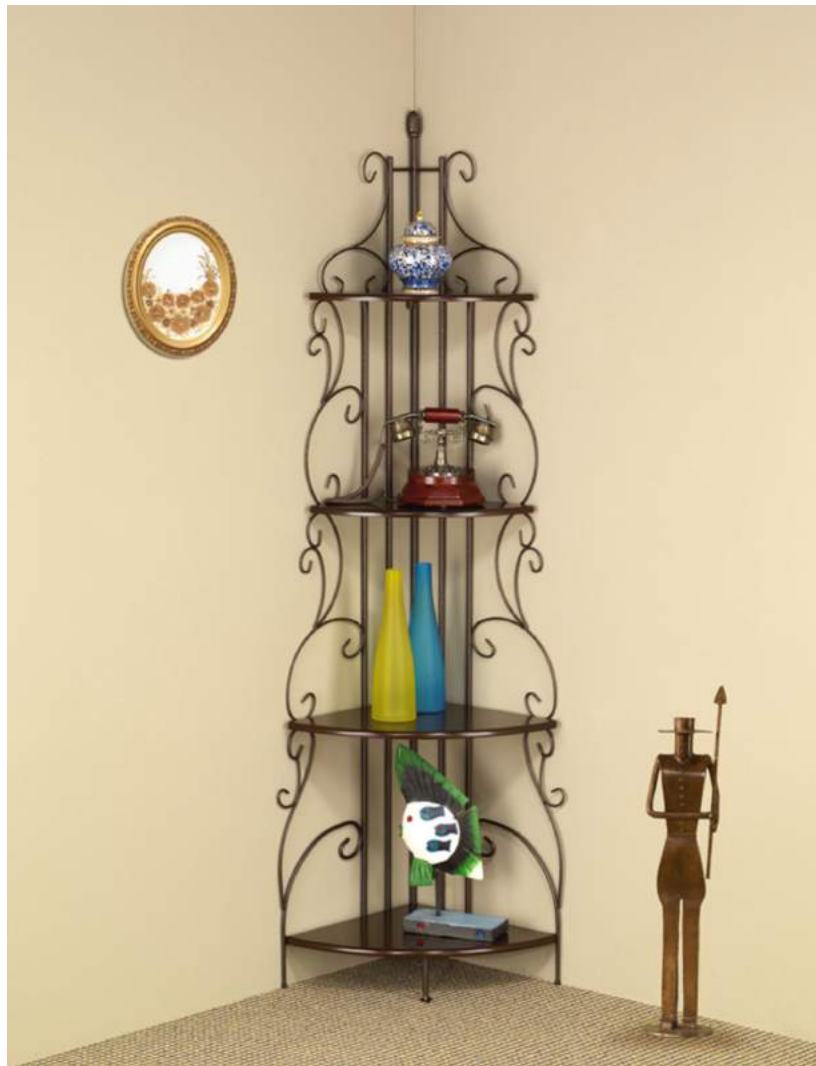


FOLDABLE CORNER SHELF

ASSEMBLY INSTRUCTION



Assembly Instruction

ASSEMBLY TIPS:

1. Remove hardware from box and sort by size.
2. Please check to see that all hardware and parts are present prior to start of assembly.
3. Please follow attached instructions in the same sequence as numbered to assure fast & easy assembly.



Warning!

1. Don't attempt to repair or modify parts that are broken or defective. Please contact the store immediately.
2. This product is for home use only and not intended for commercial establishment.

ASSEMBLY TIME PER UNIT : 30 MINUTES

PARTS IDENTIFICATION:

A. SIDE FRAME(LEFT)



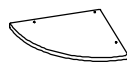
1 PC

B. SIDE FRAME(RIGHT)



1 PC

C. SHELF



2PCS

D. SHELF



1 PC

E. BOTTOM SHELF

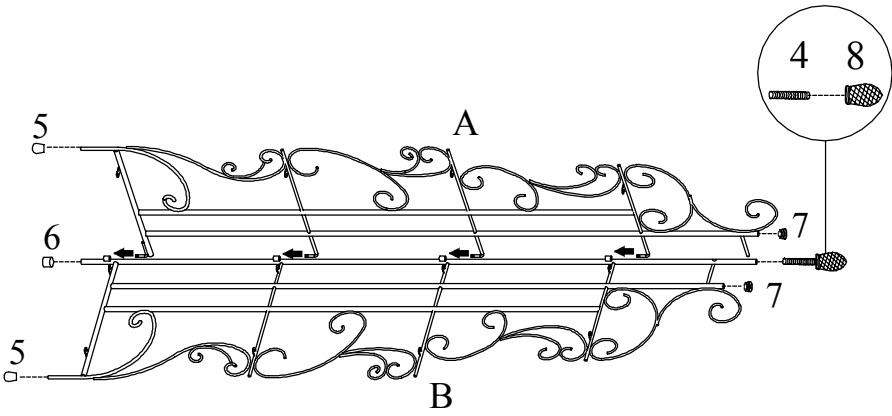


1 PC

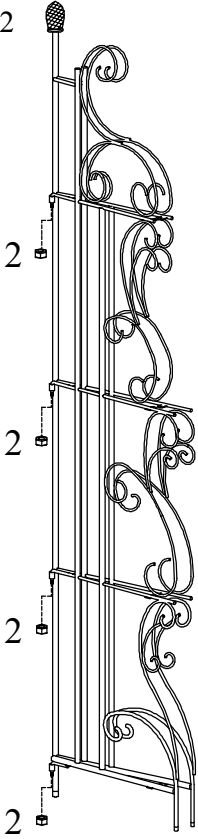
HARDWARE PACKAGE:

Z	DESCRIPTION	FIGURE	QTY
1	POST 45mmW*97mmL		1 PC
2	NUT 6mm*10mmH		4PCS
3	ALLEN BOLT 1/4"*1/2"		14PCS
4	BOLT 50mmL		1 PC
5	END CAP 10mm*13mmH		2PCS
6	END CAP 20mm*20mmH		1 PC
7	PLUG 15mm*10mm		2PCS
8	FINIAL 20mm*50mmH		1 PC
9	BOLT 22mm*30mmL		1 PC
10	OPEN END WRENCH 60mmL*25mmW		1 PC
11	ALLEN KEY 4mm*20mmh*7mmL		1 PC
12	SADDLE CLAMP 57mmL*15mmW		1 PC
13	FISCHER PLUG 6mm*30mmL		2PCS
14	SCREW 4mm*1" L		2PCS

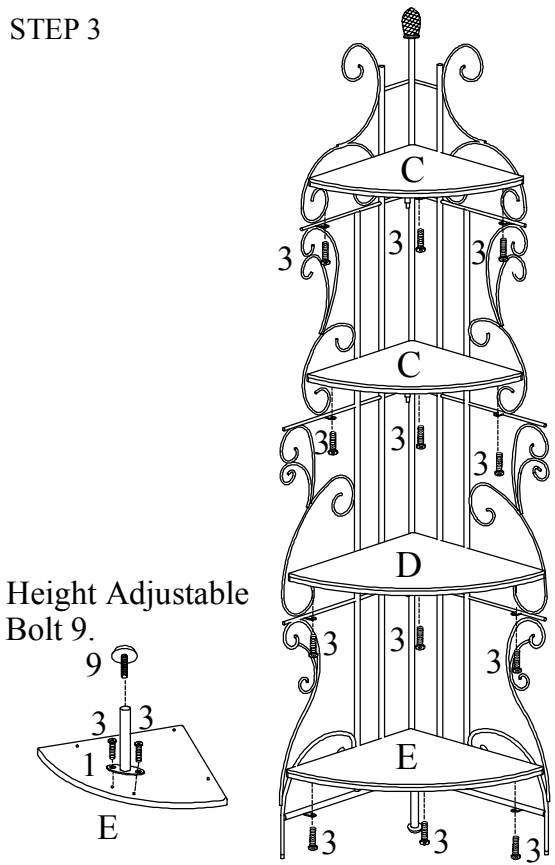
STEP 1



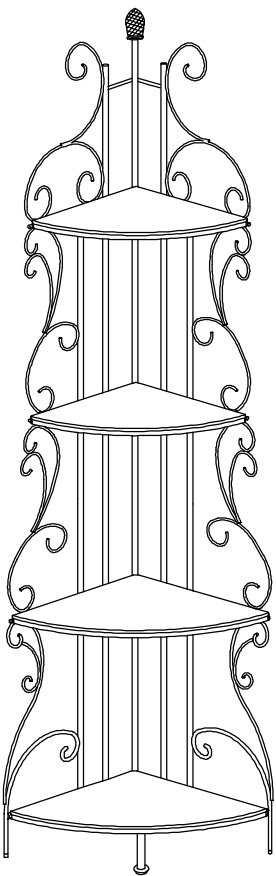
STEP 2

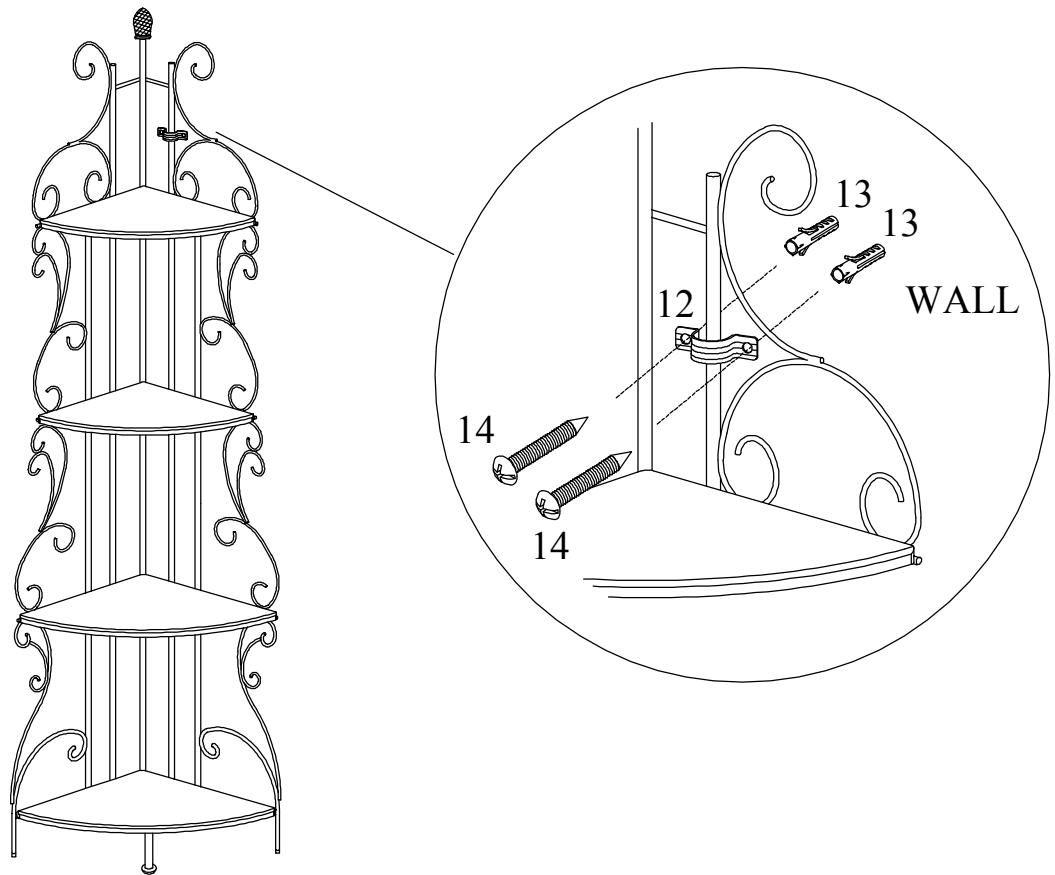


STEP 3



Finish Figure





FURNITURE TIPPING RESTRAINT

WARNING

Injury may result from tipping furniture
This restraint is not a substitute for proper adult supervision
This restraint may provide protection against tipping furniture.
Do not allow children to climb on furniture.
Failure to detach this restraint before moving furniture may
result in injury and damage