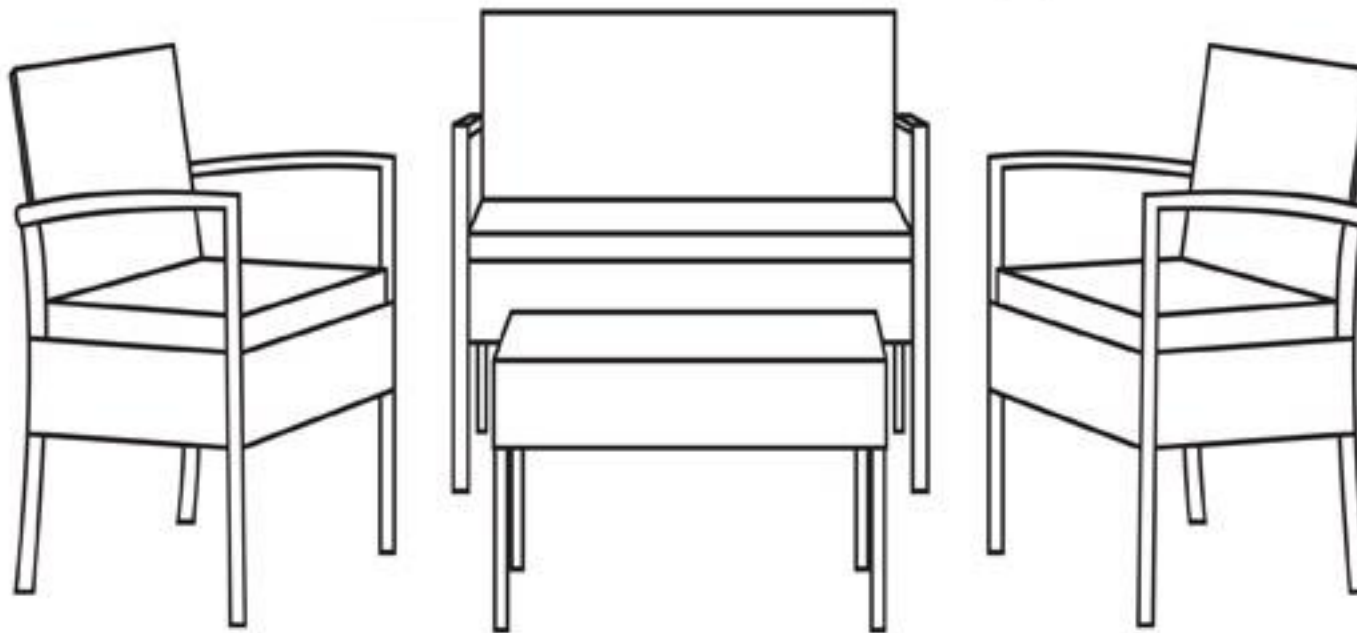


Thank you for choosing us. If you have any questions, comments or concerns, feel free to contact us by phone, by email, or via our page.

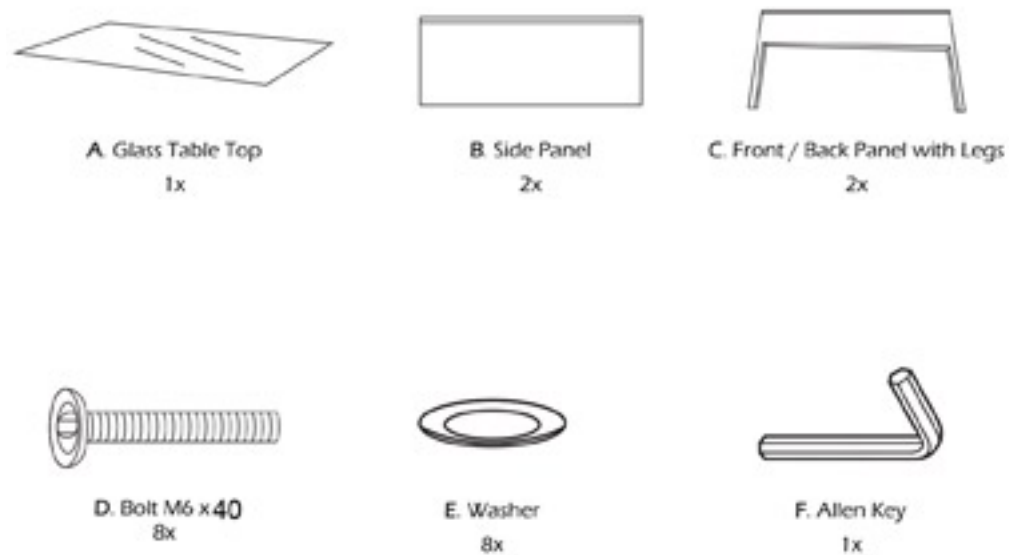
We stand behind our brand and the quality of the items we sell. We will send new parts or replace products at our discretion within the one year warranty period. Before we can help, you will need to provide proof of purchase with the date of purchase and photos of the defective merchandise. We will use the photos to determine the cause of defect and for future quality control.



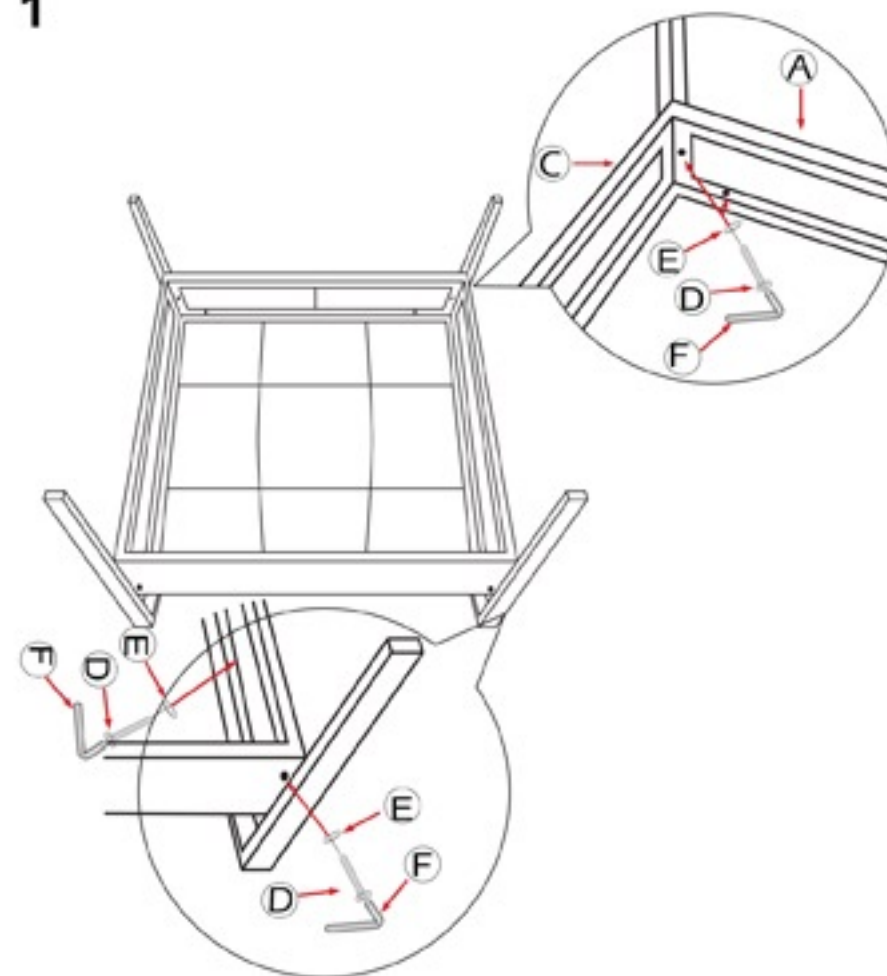
ASSEMBLY INSTRUCTIONS

PARTS AND HARDWARE (Coffee Table)

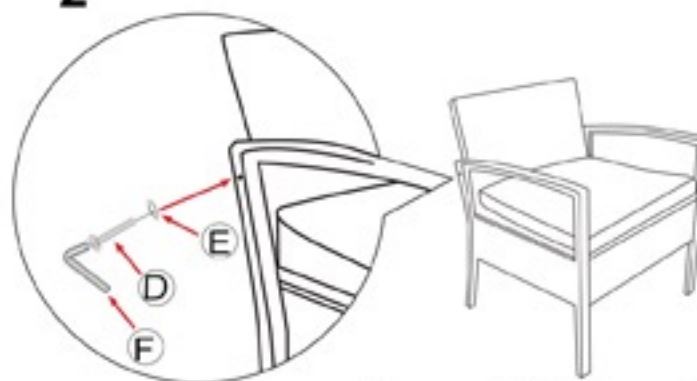
Avoid using sharp objects such as a knife to cut open packing as you may accidentally damage the upholstery.



1

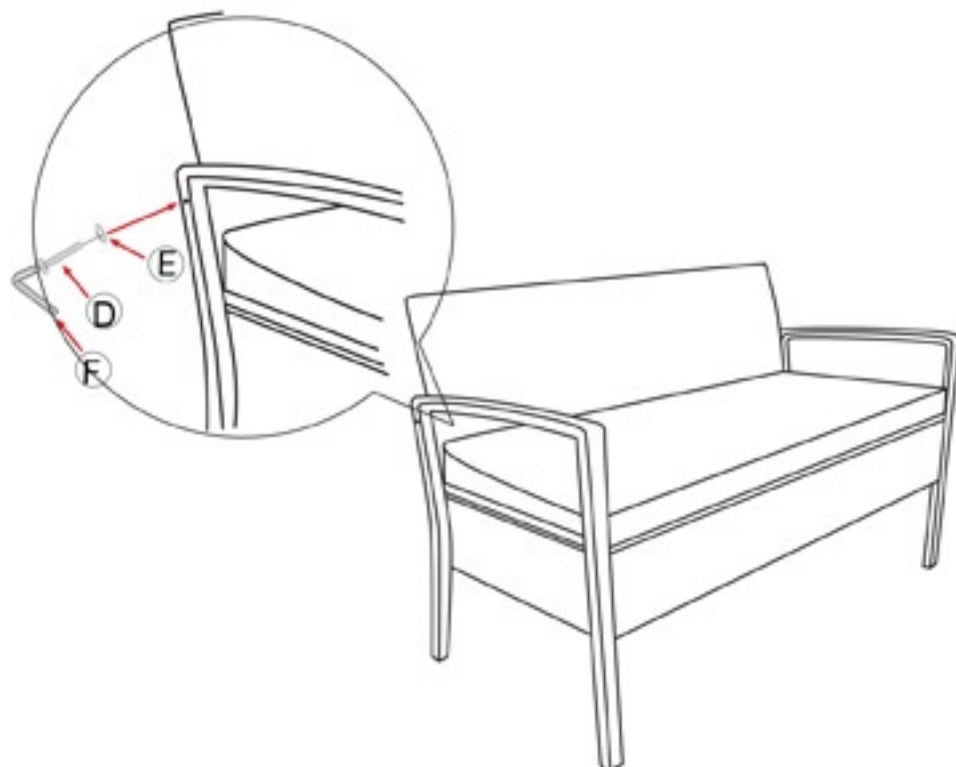


2



*Repeat steps 1-2 for the second Single Seater.

2



PARTS AND HARDWARE (Chair)

Avoid using sharp objects such as a knife to cut open packing as you may accidentally damage the upholstery.



A. Backrest
1x



B. Seat
1x



C. Arm
2x



D. Bolt M6 x 40
10 x



E. Washer
10 x

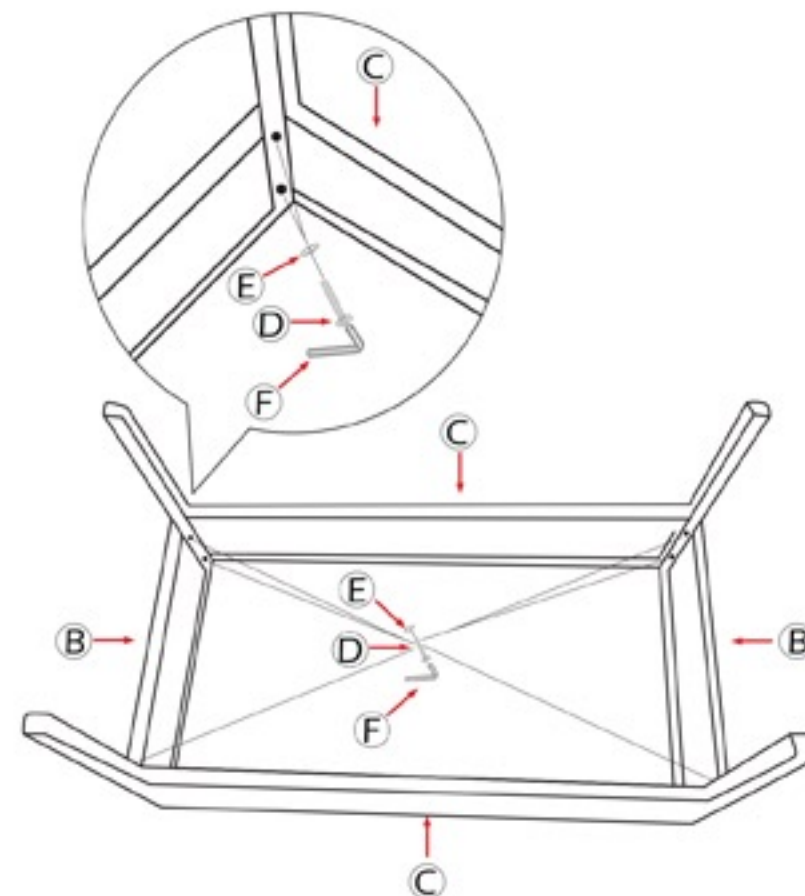


F. Allen Key
1x

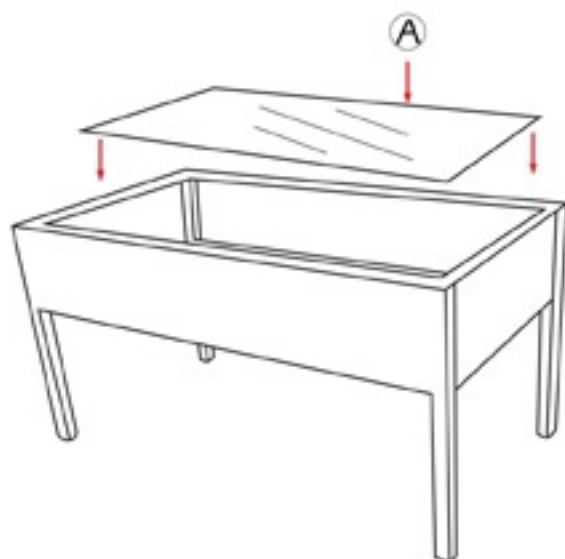
ASSEMBLY INSTRUCTIONS (Coffee Table)

Do not fully tighten bolts until assembly is complete.

1



2 Place glass Table top on assembled coffee table



PARTS AND HARDWARE (Loveseat)

Avoid using sharp objects such as a knife to cut open packing as you may accidentally damage the upholstery.



A. Backrest
1x



B. Seat
1x



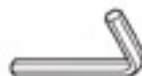
C. Arm
2x



D. Bolt M6 x 40
11 x



E. Washer
11 x



F. Allen Key
1x

