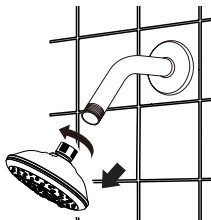


SHOWER FILTERS PRODUCT GUIDE



INSTALLATION

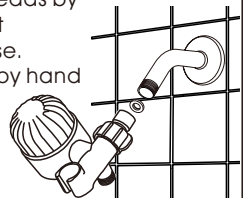
1 Remove old shower head from the shower arm.



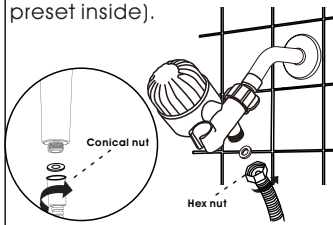
2 Wrap the shower pipe with the white Teflon tape, ensuring an even application with 4 to 5 clockwise rotations.



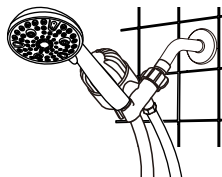
3 Attach the handheld shower head bracket onto the shower pipe threads by turning it clockwise. Tighten by hand only.



4 Connect Hex nut of shower hose to bracket and connect conical nut of shower hose to handheld (Make sure washer preset inside).



5 Open the valve to check for any leaks. If leaks are detected, close the valve and further tighten the shower head.



CLEANING & MAINTENANCE

- To maintain proper working conditions, cleaning your shower head is required when mineral deposits appear on the spray openings. To clean mineral deposits, gently rub the rubber nozzles on the face of the shower head to dislodge.
- To clean heavier deposits on your shower head, remove shower head and soak face down in 1-2 cups of white vinegar (use white vinegar only) for about 2-3 hours.
- Do not clean or rinse any part with harsh chemicals, heavy duty cleaners, or abrasives; this may damage the parts or the finish.

Trouble Shooting

Water Pressure too low?

1. Insert a screwdriver, tweezers or other tool. Between the restrictor and threads of the handheld shower head. (This can be done carefully by hand)



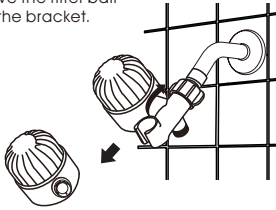
2. Pop out with the screwdriver or tweezers to remove.



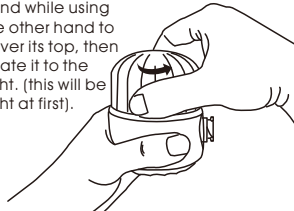
REMOVE Screened Washer **REMOVE** 1.8G/PM Washer **INSTRT** 2.5G/PM Washer

How to replace the filter cartridge?

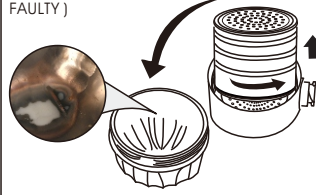
1. Rotate backwards to remove the filter ball from the bracket.



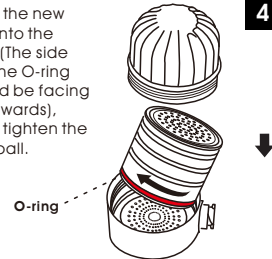
2. Gently grasp the filter ball with one hand while using the other hand to cover its top, then rotate it to the right. (this will be tight at first!).



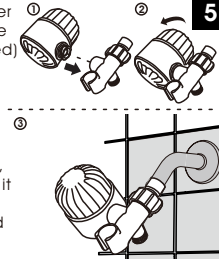
3. Remove the dirty filter (there is a discolored part inside the housing originally, NOT FAULTY)



4. Insert the new filter into the head (The side with the O-ring should be facing downwards), hand tighten the filter ball.



5. Insert the filter ball (with one end attached) into the bracket, rotate it slightly downward and forward, and reinstall it onto the shower head bracket.

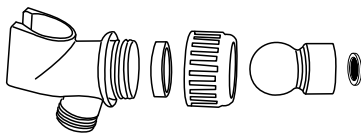


TROUBLE SHOOTING

How long it takes to replace the filter?

The filter element has a lifespan of around 3-4 months, so it is recommended to replace it regularly to ensure maximum effectiveness.

HOW TO REINSTALL IF LEAKING



When the KDF-55 in the filter element turns gray, it is time to replace the filter element.



What is KDF?

Kinetic Degradation Fluxion (KDF) is a high-purity copper-zinc formulation that uses a basic chemical process known as redox (oxidation/reduction) to remove chlorine, lead, mercury, iron, and hydrogen sulfide from water supplies.

How does KDF Work?

In short, the KDF redox process works by exchanging electrons with contaminants. This "give and take" of electrons converts many contaminants into harmless components. During this reaction, electrons are transferred between molecules, and new elements are created. Some harmful contaminants are changed into harmless components. Others are electrochemically bound to the KDF media.

What Contaminants Does KDF Remove?

KDF process media works to reduce or remove chlorine, iron, hydrogen sulfide, lead, mercury, magnesium, and chromium. It may also inhibit the growth of bacteria, algae, and fungi. Redox media removes up to 98% of water-soluble cations (positively-charged ions) of lead, mercury, copper, nickel, chromium, and other dissolved metals. More than 98% of chlorine is generally removed.

Why is KDF used in shower water filters?

KDF is frequently found in home showerhead filters because of its effectiveness at higher operating temperatures and flow rates.

Step 1



Step 2



Step 3



Step 4



Step 5



Step 6

