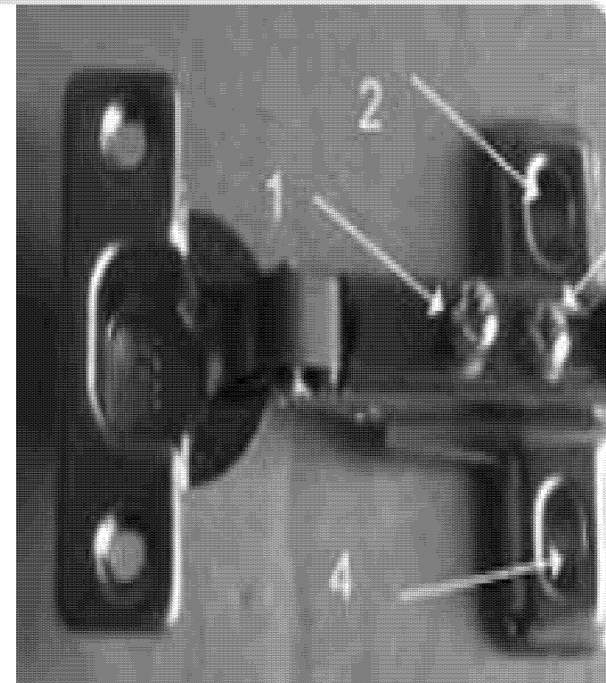
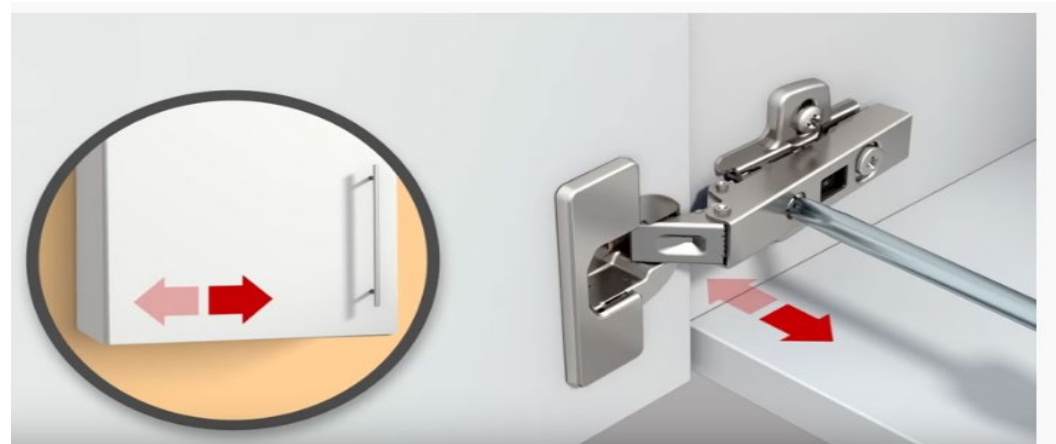


Use screw 1 to **adjust** the **doors** from side to side. Turning the screw in a clockwise direction moves the **door** closer to the edge of the **cabinet**. You can **adjust** both the top and bottom **hinge** to move the **doors** closer together or further apart. If you loosen screws 2 & 4 the **hinge** backplate can be moved up or downwards.



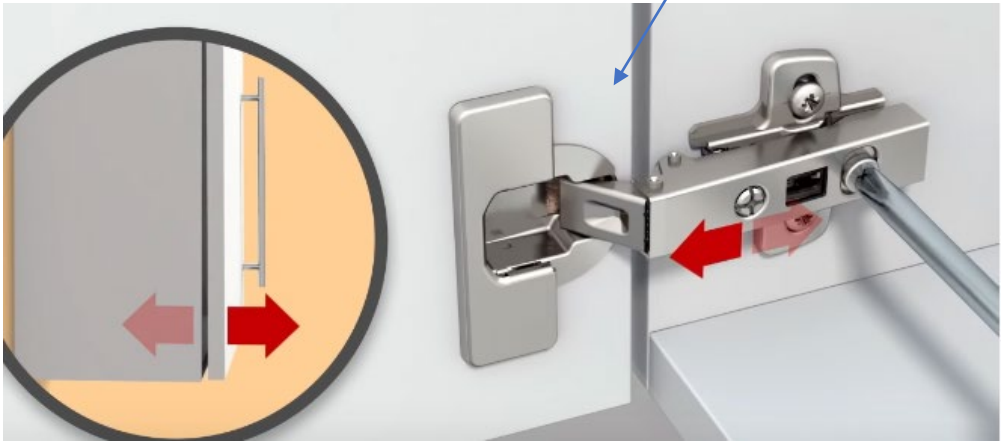


This screws brings the door in closer to the unit so that it fits against the frame





This screw brings the door tighter to the frame so there is no gap





These screws make the door move up and down so that you can align them to fit flush with the top and bottom of the unit

