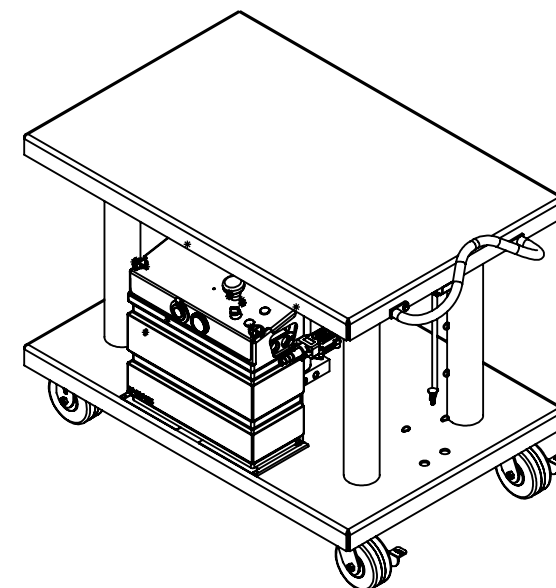
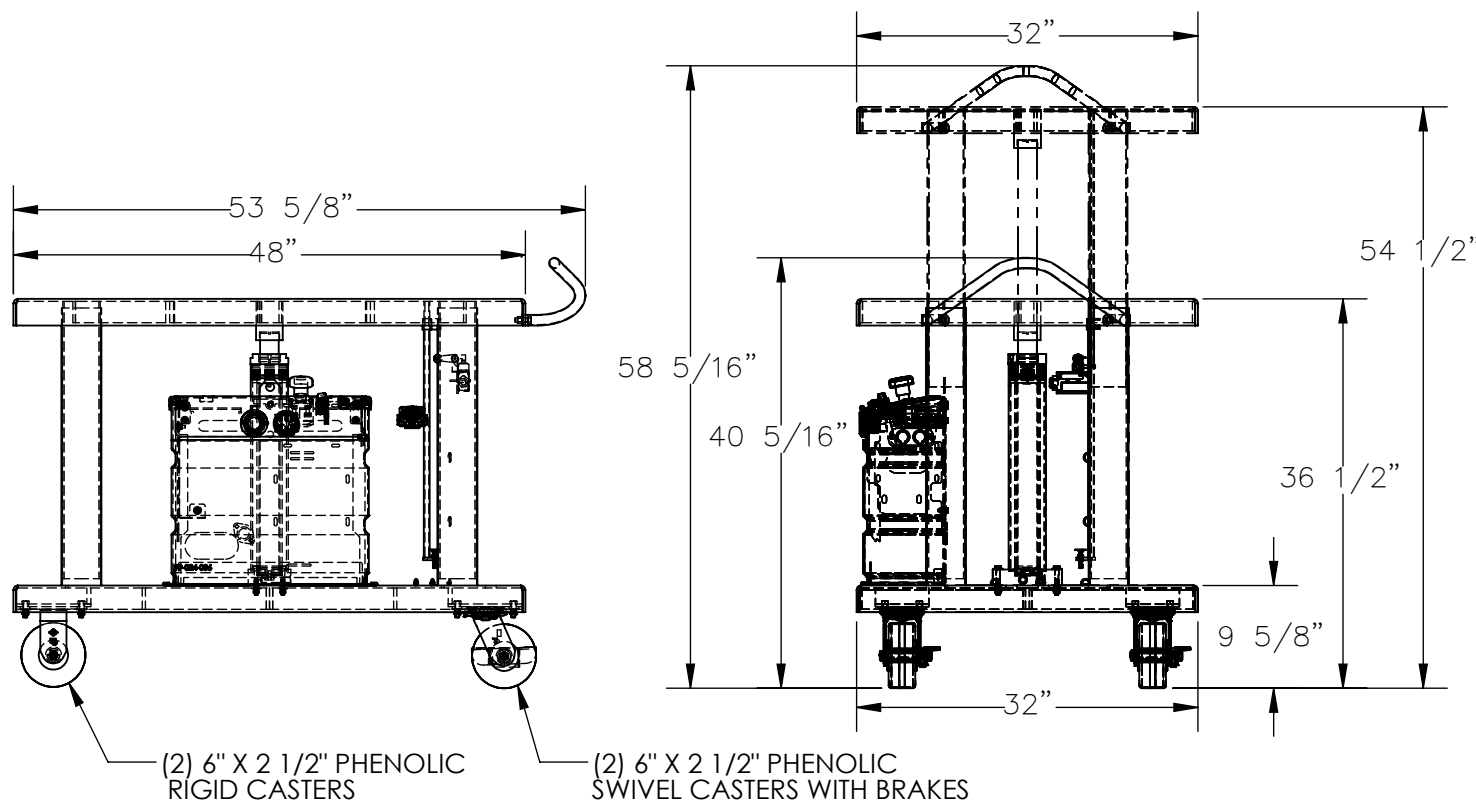


HYDRAULIC POST TABLE - HT-60-3248-DC

APPROX WEIGHT: 589.87 lbs.
DOES NOT INCLUDE WEIGHT OF POWER OR PACKAGING!!!

*** ANY ADDITIONS, DELETIONS, OR OMISSIONS MUST BE CORRECTED ON THIS DRAWING AS THIS DRAWING WILL BE CONSIDERED ALL INCLUSIVE ***

ALL GRAPHICS PROVIDED ARE FOR REFERENCE ONLY. IF CERTAIN DIMENSIONS ARE CRITICAL PLEASE VERIFY THOSE DIMENSIONS WITH YOUR SALESPERSON



DIMENSION TOLERANCE $\pm 1/4"$

STANDARD FEATURES

MODEL NUMBER IS HT-60-3248-DC
MAX CAPACITY IS 6,000 LBS.
OVERALL WIDTH: 32"
USABLE WIDTH: 32"
OVERALL LENGTH: 53 5/8"
USABLE LENGTH: 48"
RAISED HEIGHT: 54 1/2"
LOWERED HEIGHT: 36 1/2"
OVERALL RAISED HEIGHT: 58 5/16"
OVERALL LOWERED HEIGHT: 40 5/16"
(2) PHENOLIC RIGID CASTERS
(2) PHENOLIC SWIVEL CASTERS WITH BRAKES
HYDRAULIC HOSES NOT SHOWN
TOUGH BAKED IN POWDER COATED BLUE FINISH

SPECIAL FEATURES

NONE

APPROVAL

I, THE UNDERSIGNED, AGREE THAT THE PRODUCT AS REPRESENTED SATISFIES DESIGN AND DIMENSION REQUIREMENTS. I ALSO ACKNOWLEDGE MY DUTY TO CONFIRM PRODUCT AND INSTALLATION COMPLIANCE WITH ALL APPLICABLE FEDERAL, STATE AND LOCAL REGULATIONS AND STANDARDS.

ANY MODIFIED UNITS ARE NON-RETURNABLE

[] As drawn [] As marked

Signed: _____ Date: _____

Printed Name: _____

LEAD TIME WILL START UPON RECEIPT OF SIGNED APPROVAL DRAWING

FOR INTERNAL USE ONLY
PROJECT SIGN OFF

SALES	
ENG.	
FAB.	
POWER	

DISTRIBUTOR'S NAME:

VESTIL MANUFACTURING

P.O.#

X

W.O.#

X

DRAWN BY: CRH

DATE: 3/11/2020

SALES: X

REFERENCE: X

SCALE: 1:18

FILE NAME:

QUOTED LEAD TIME: X

QUOTE # X

21-007-149-001