

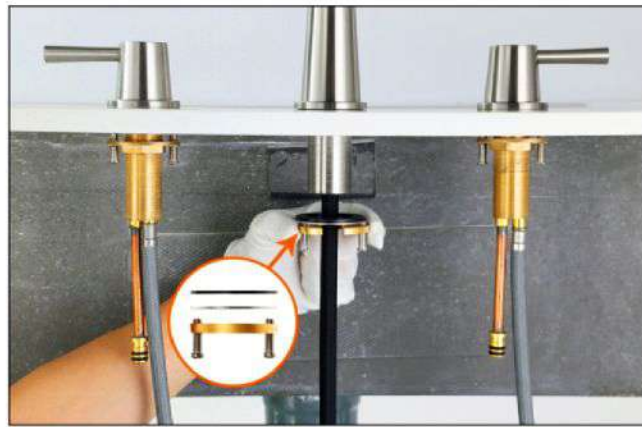
# **Faucet Installation Manual**

**Committed to Creating a Better Life**





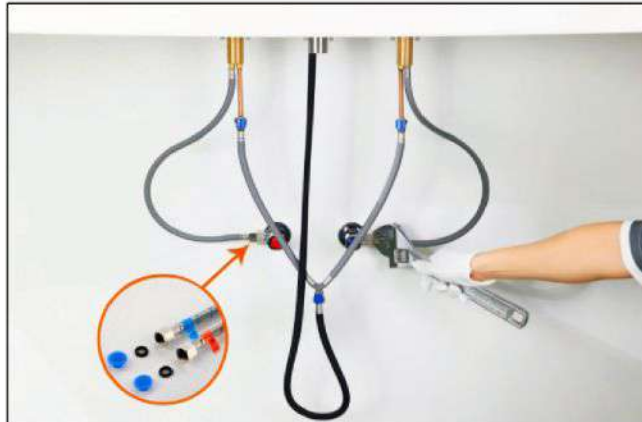
1. Place the faucet, two handles into the sink hole.



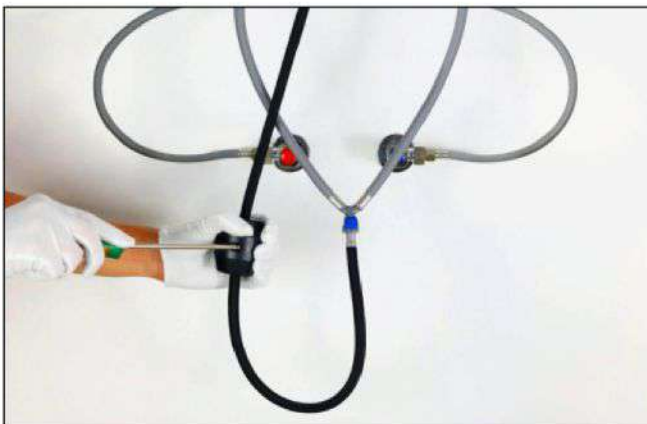
2. Put rubber gasket, steel washer and the nut in sequence upward. Screw the nut in counter-clockwise and then tighten.



3. V shape hose connection. Make the black hose, two brass hoses connect to the V shape hose.



4. Connect the water supply hoses to the angle valves.



5. Clasp the weight to the label "Weight Here" .



6. The installation is complete. You can open the handle and check whether there's leaking or not.

## TIPS:

- Flush the block and the water supply pipes thoroughly before installation.
- Clean the surface of the faucet regularly.
- Avoid sharp objects and acidic detergent to the surface of the faucet.

**If you have any queries about our products, please feel free to contact us.**

**Email: [dlem@pobosales.com](mailto:dlem@pobosales.com)**

### For the cold&hot supply hoses :

- The two filters are used for preventing the impurities from entering and damaging the faucet.
- If the water flow becomes smaller, then there may be impurities stuck onto the filters.
- Please take the filters out and have them washed thoroughly.

