



**leisure craft** INC.

P.O. Box 1700 • Hendersonville, NC 28793 • Tel: (800) 633-8241 • (828) 693-8241  
Fax: (828) 693-8777 • [www.leisurecraftinc.com](http://www.leisurecraftinc.com) • [sales@leisurecraftinc.com](mailto:sales@leisurecraftinc.com)

## SPEC SHEET: T6XPP

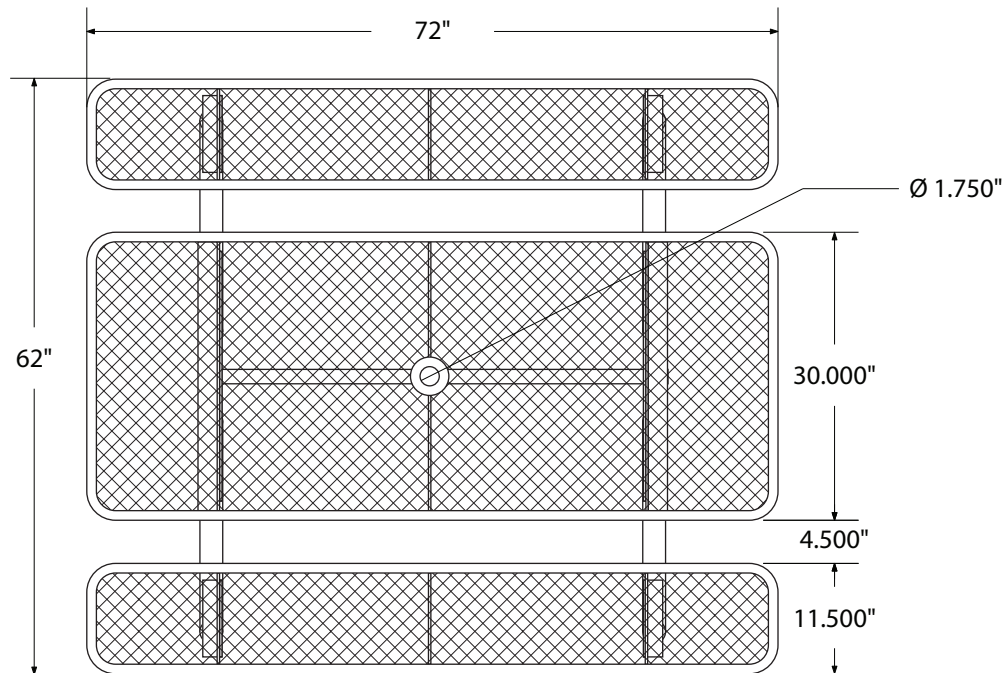
### 6' STD EXP PICNIC TABLE *with umbrella hole, portable*

**Wt. 210 lbs**

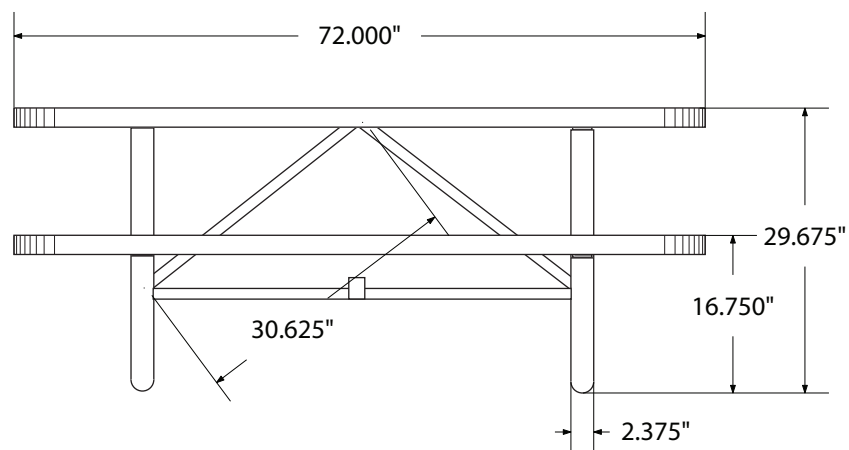
*photo*



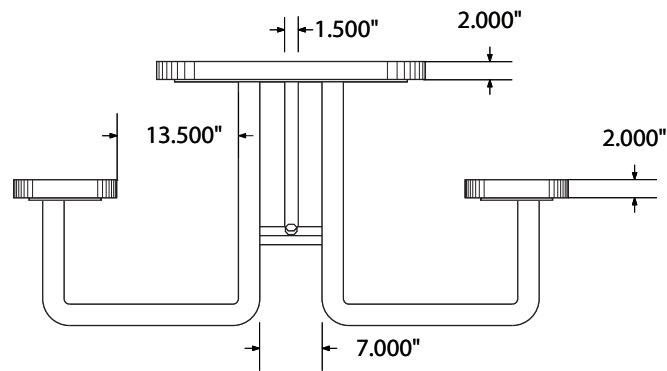
*top view*



*front view*



## side view



## product details



### Coated Surfaces:

- Thermoplastic coated
- Copolymer-based, environmentally safe
- Does not fade, crack, peel or warp
- Applied at a thickness of 25-30 mils.
- 5 Year warranty on coating



### Construction:

- Seats and tops - 9 gauge steel
- 2 3/8" tubular understructure
- Understructure - galvanized steel
- Understructure finish - black polyester powder coated
- Nuts, washers and bolts - galvanized steel

## mounting types

P = Portable : no mount

SM = Surface Mount:  
concrete anchors  
through discs welded  
to legs

IG= In-Ground:  
J-rods set in concrete  
through discs welded  
to legs

