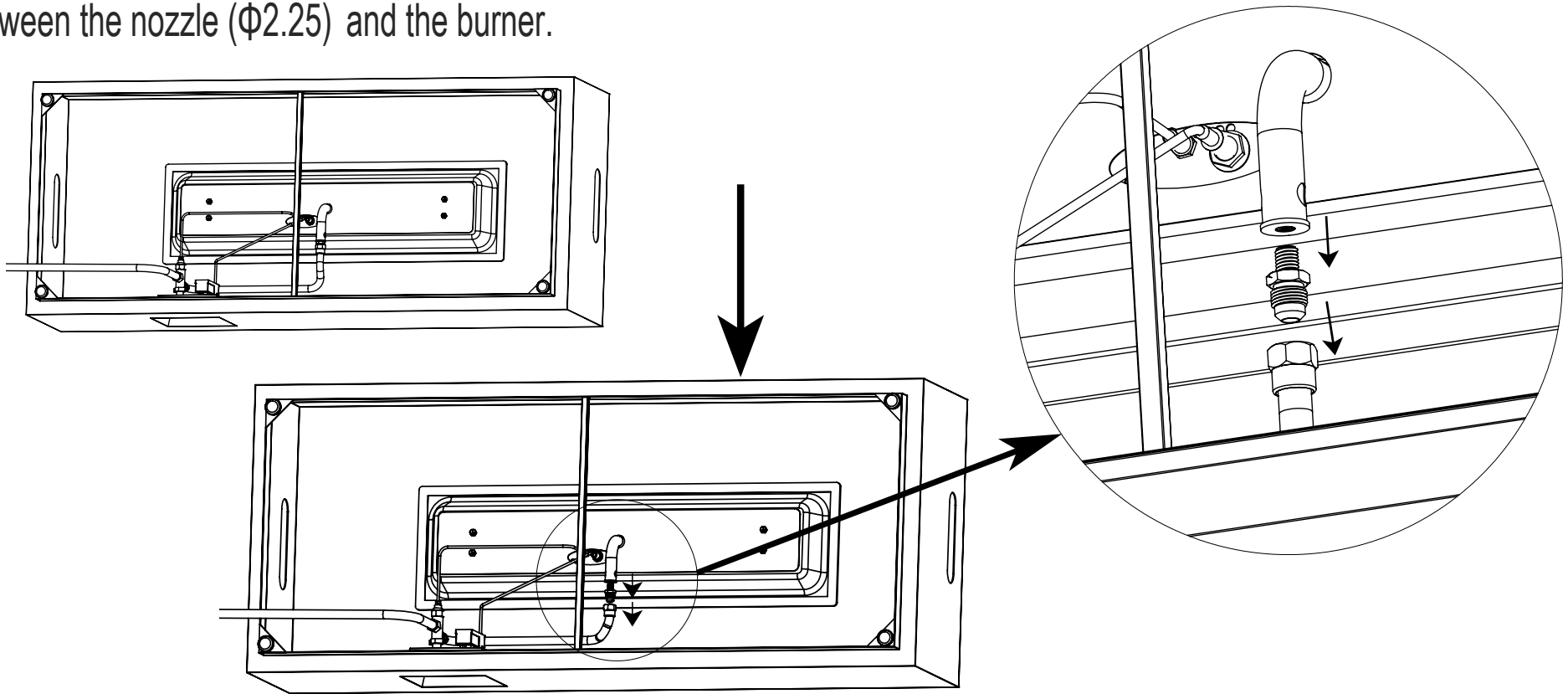


WARNING: Natural gas conversion must be performed only by a qualified natural gas provider or service technician.

WARM REMINDER: When replacing the orifice, ensure that the gas supply has been disconnected and that the work environment is well-ventilated.

● **STEP 1**

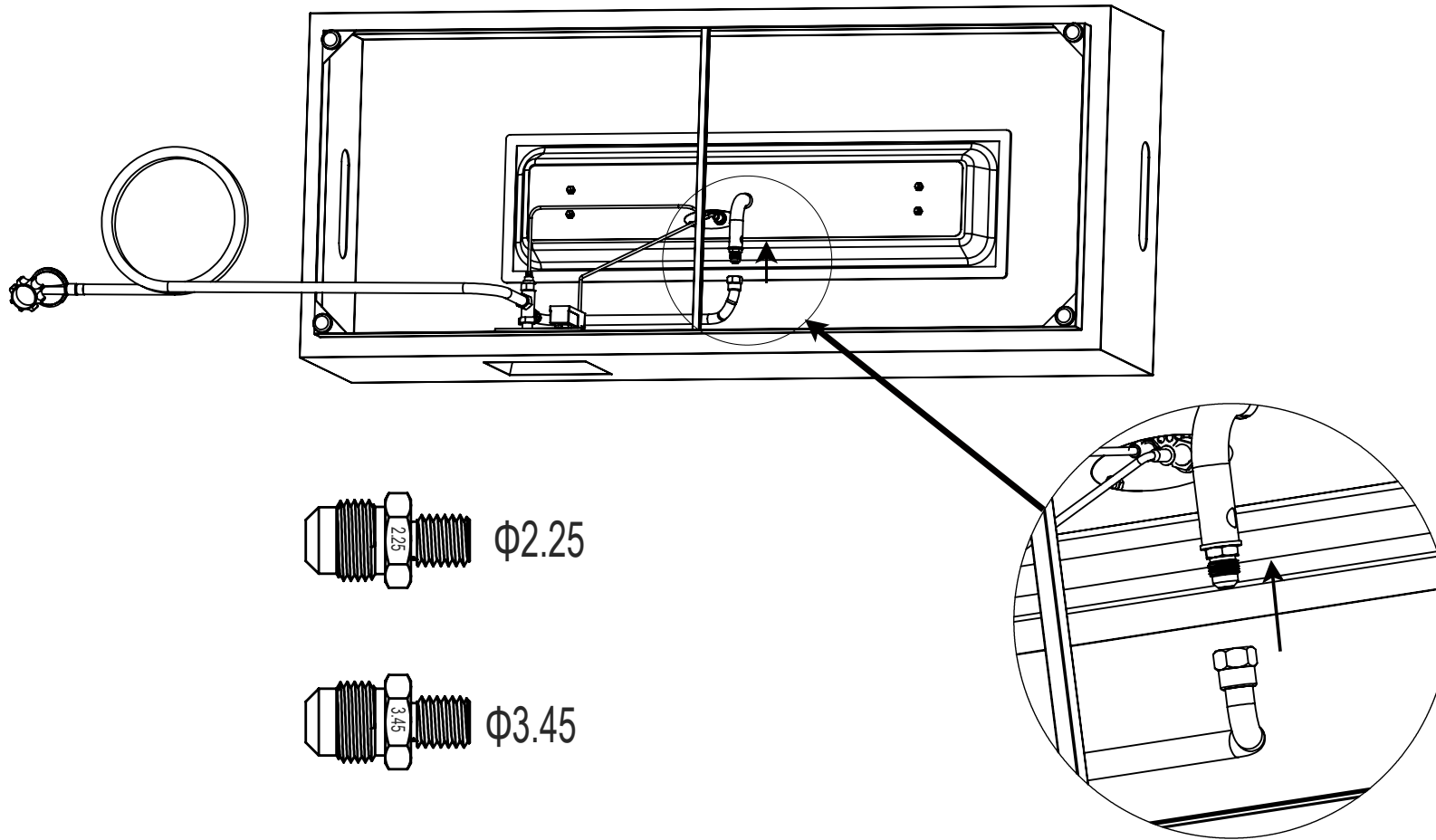
Remove the connection between the corrugated pipe and the nozzle ($\Phi 2.25$), remove the connection between the nozzle ($\Phi 2.25$) and the burner.



* You will need two wrenches for disassembly and tightening.

● STEP 2

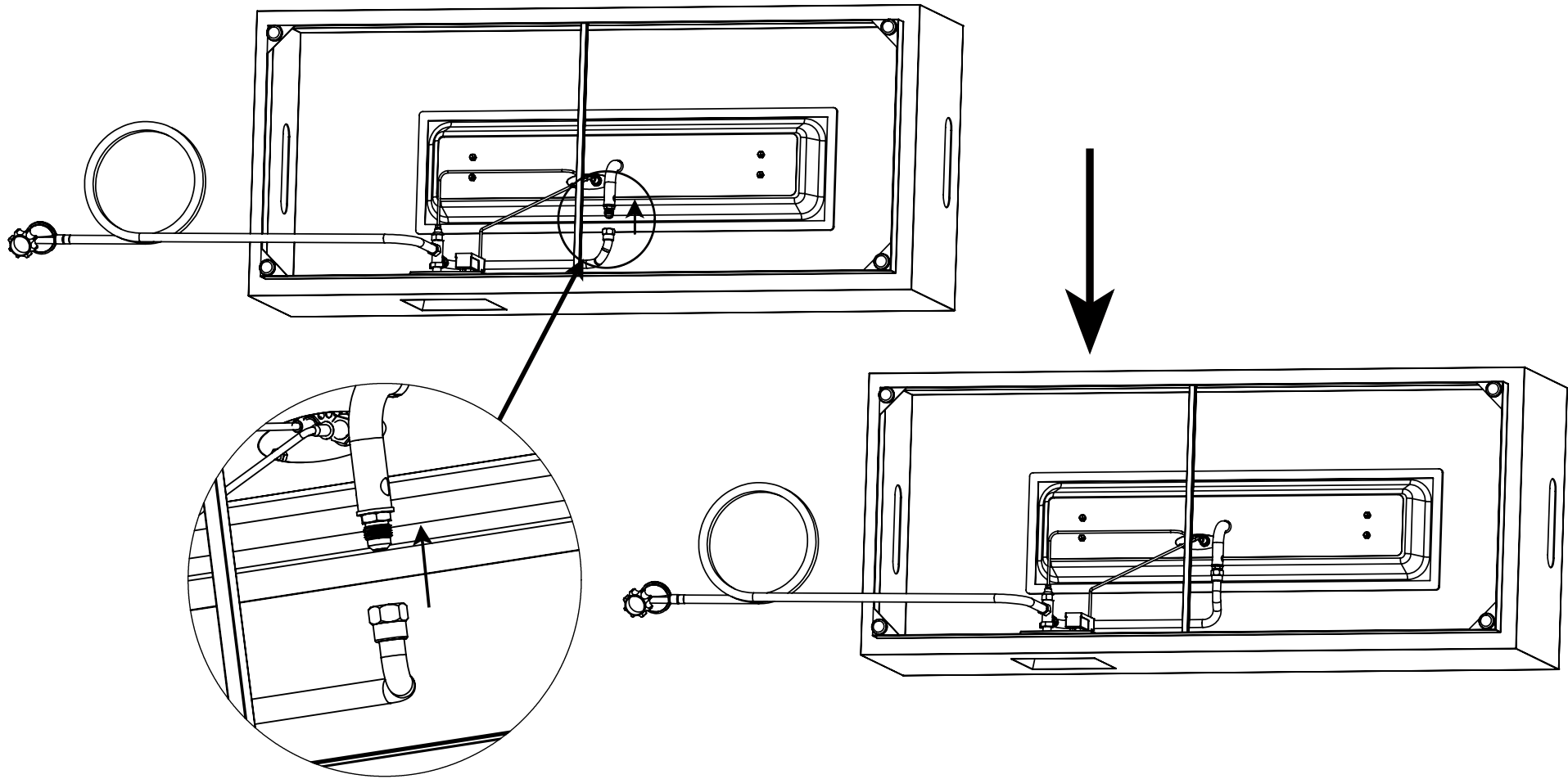
After removing the $\Phi 2.25$ nozzle, connect the $\Phi 3.45$ nozzle to the burner and tighten it securely. You will need two wrenches for disassembly and tightening.



* You will need two wrenches for disassembly and locking.

● STEP 3

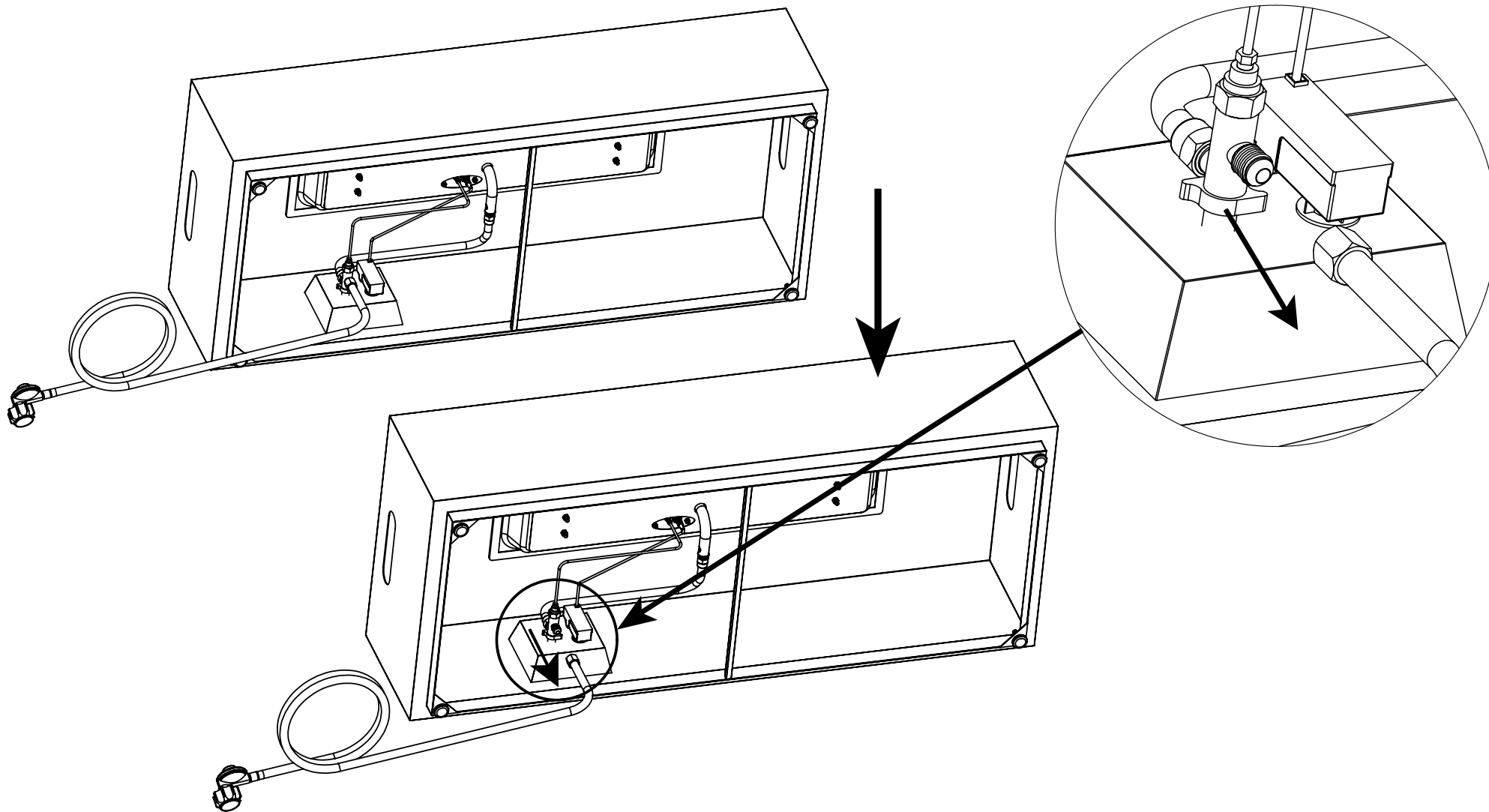
Connect the corrugated pipe to the nozzle and tighten it securely.



* You will need two wrenches for disassembly and locking.

● STEP 4

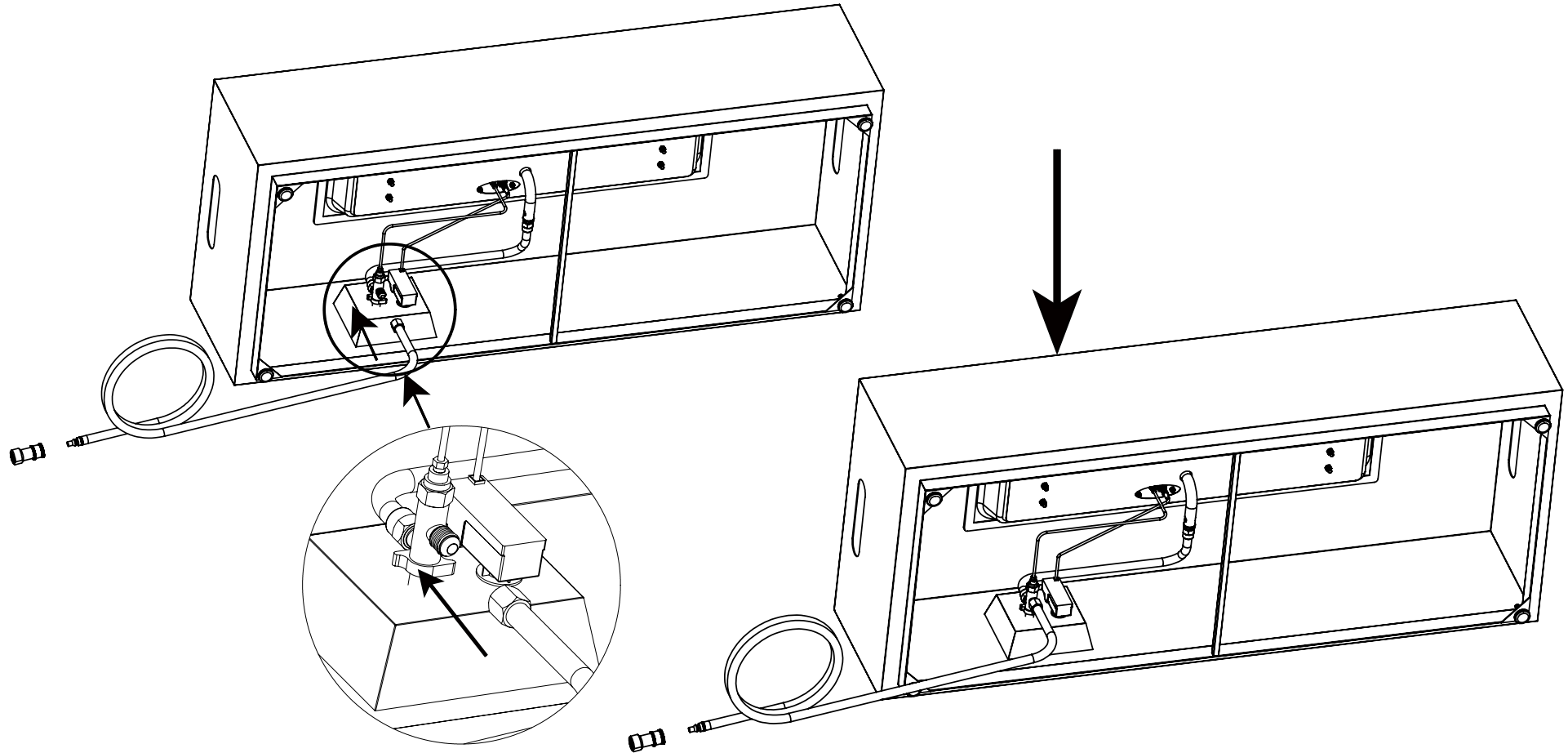
Then, disconnect the connection between the regulator and the gas valve.



* You will need two wrenches for disassembly and locking.

● STEP 5

Connect and secure the natural gas hose to the gas valve.



Warm reminder: Please prioritize using a 1/2 inch ID natural gas hose. Fire pits with a power of less than 50,000 BTU can also use a 3/8 inch ID natural gas hose.

* You will need two wrenches for disassembly and locking.