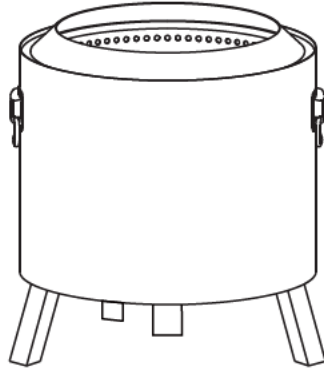


User Manual



FOR YOUR SAFETY

PLEASE READ ALL SAFETY RULES BEFORE ASSEMBLY AND USAGE. FAILURE TO FOLLOW THESE INSTRUCTIONS MAY RESULT IN A FIRE, PROPERTY DAMAGE, OR PHYSICAL INJURY.

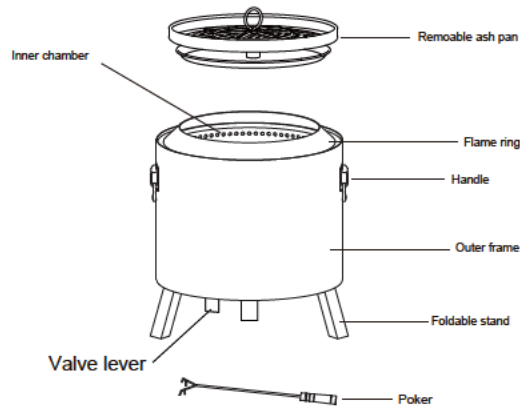
- **THIS PRODUCT IS FOR OUTDOOR USE ONLY. DO NOT USE THE STOVE INDOORS.**
- All surfaces of this fire pit are extremely hot during and after the fire has been put out. To avoid any burns or injuries, do not touch this stove under any circumstances until the fire is completely out and the surfaces have fully cooled down.
- **FOR ADULT USE ONLY.**
- **DO NOT** allow children to operate this fire pit. Keep children and pets away from the stove when it is in use.
- **DO NOT** use this product under a covered porch, patio roof, low hanging branches, trellis, or overhangs of any kind.
- **DO NOT** use this product in extreme weather or thunderstorm conditions.
- **DO NOT** leave a burning fire pit unattended at any time.
- **DO NOT** wear any flammable or loose clothing when using this stove, especially when igniting a fire.
- **DO NOT** modify or tamper with this appliance. Tampering with the fire pit is dangerous and not permitted.
- **DO NOT** move the fire pit once the fire is started.
- When using on deck it is recommended to use a fire pit mat under.
- Always place the fire pit on a hard, flat, non-flammable surface.
- Always use this product in accordance with all local and state fire codes.
- Practice the same safety precautions you would as with any open fire.
- Make sure the fire is completely extinguished before leaving the fire pit after use.
- Make sure all flammable materials or items are at least 8 feet away from the fire pit.
- Ensure the fire pit is placed in an area that is visible and will not be a trip hazard to anyone.

STORAGE AND CARE

- When the stove is not in use, store it in a dry place or cover it on to preserve its usage.
- If the stove becomes yellow or stained, clean the stove with a mild stainless steel detergent and gently wipe it with a sponge.



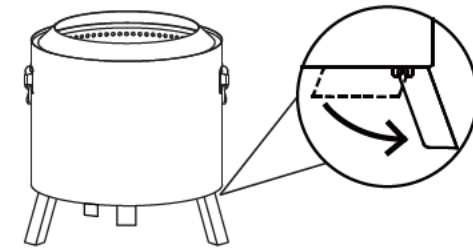
Know Your Fire Pit



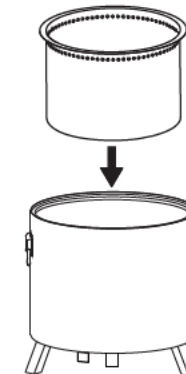
Specifications

HEIGHT	DIAMETER
18" (460mm)	18" (455mm)
WEIGHT	MATERIALS
20 lbs (9kg)	304 + 201 Stainless steel

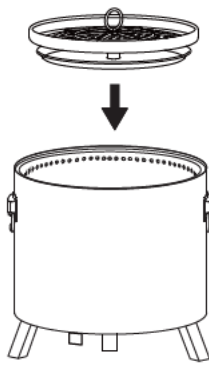
1. Adjust the foldable stands for using



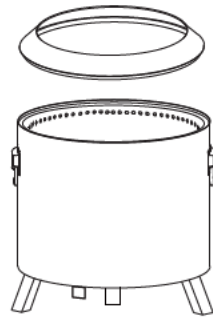
2. Place the inner chamber inside the outer frame for burning or out of it for ash cleaning



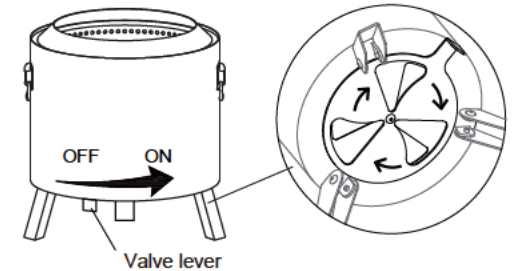
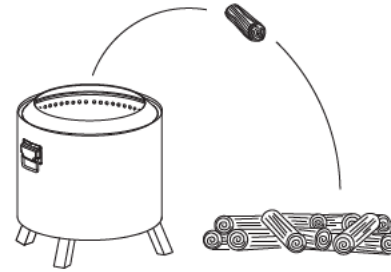
3. Place the log grate into the chamber for combustion



4. Place the flame ring onto the fire pit



5. Place wood logs or pellets into the inner chamber and ignite them afterwards, meanwhile adjust the airflow intake to get different burning effect (Strong or weak or off) by sliding the valve lever



How to Use Your Fire Pit

1. Form a small hill of sticks, branches, or other dry kindling at the center of your burning plate. Place them as close together as possible to maximize fuel strength. Light the small hill of dried twigs or other fuel burners and wait for the flame to ignite.
2. Once the fire starts, add bigger sticks. As a safety precaution, do not add any other combustible except wood. Do not use wood pellets, because these may produce a toxic gas or block the air holes.
3. Add wood blocks at least 1" to 5" in diameter to create a solid thermal chamber.
4. Fill the stove with fuel. The maximum height should not exceed the height of the air outlet on the inner wall.

LOW-SMOKE FIREWOOD SUGGESTIONS

- Black Locust
- White Ash
- Oak (white, black and red)
- Birch (black and yellow)
- Hickory (shagbark and butternut)
- Beech (blue and high)
- Pecan
- Apple
- Cherry

Each is generally considered a low-smoke firewood that will also burn long and hot.

CALIFORNIA PROP 65 WARNING

This product can expose you to chemicals including Carbon monoxide which is known to the State of California to cause birth defects or other reproductive harm.

For more information go to www.P65Warnings.ca.gov.