

# 67" DUET CAST IRON DOUBLE ROLL TOP TUB

Cat. No.  
CTDRH



L: 67- $\frac{3}{4}$ "  
W: 31"  
H: 23- $\frac{1}{4}$ " (from floor to top of tub)  
18- $\frac{1}{2}$ " (from bottom of tub to top of tub)

Water depth: 12- $\frac{1}{2}$ " to Over flow  
Slope: 30°



**The following is recommended for CTDRH tubs with deck holes:**

- Rim-mounted faucet: part #4601 or 4201
- Straight bath supplies: part #5577
- Leg tub drain: part #5599

Maximum Gallon Capacity: 55  
Shipping Weight: 570 lbs.  
Empty Weight: 350 lbs.  
Filled Weight: 809 lbs.

## Features:

- Inside finish is white enamel
- Cast Iron imperial feet available
- Tub exterior available in white (epoxy)
- 7" centers on the long side of tub
- Pre-drilled overflow hole
- Non-skid strips
- Feet are attached and leveled before shipment
- Tub is thoroughly inspected before shipment

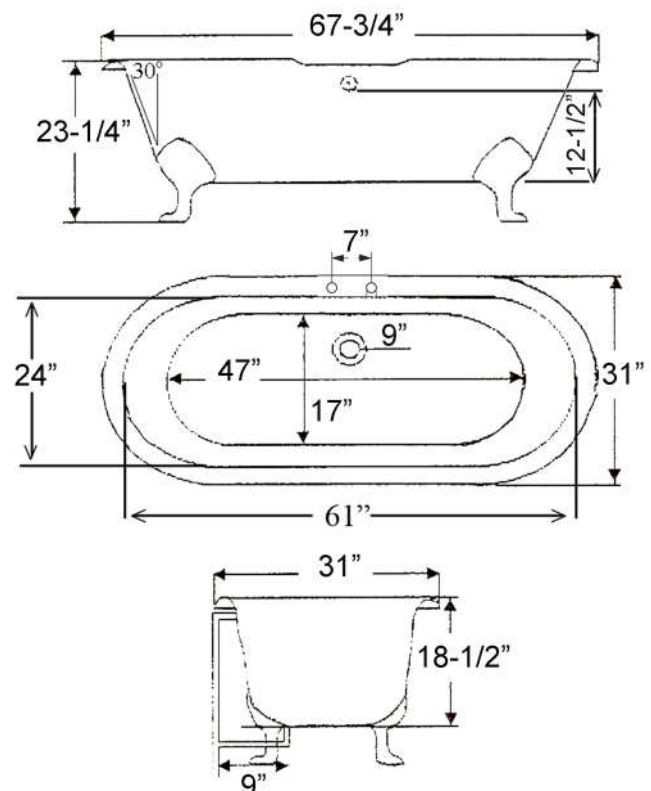
### Foot Finishes:

UF Unfinished  
BL Painted Black  
BQ Painted Bisque  
PB Polished Brass



CP Polished Chrome  
WH Painted White  
PN Polished Nickel  
SN Brushed Nickel  
ORB Oil Rubbed Bronze

**Custom Colors Available** (inside of tub is always white enamel):  
Painted bathtubs are considered "special order" and are not returnable  
\$160 Bisque or Black \$250 Designer Color



Dimensions and specifications subject to change without notice.

09/26/2018

P 847•244•1234

www.barclayproducts.com