

SUDAN /SLATE

Construction	Hand Woven	Color	
Fiber Content	Viscose & Leather Face	Availability	24 units currently in stock
Country of Origin	India	Dimensions	2' x 3' Sample
Thickness	0.16 inches		

Available Sizes

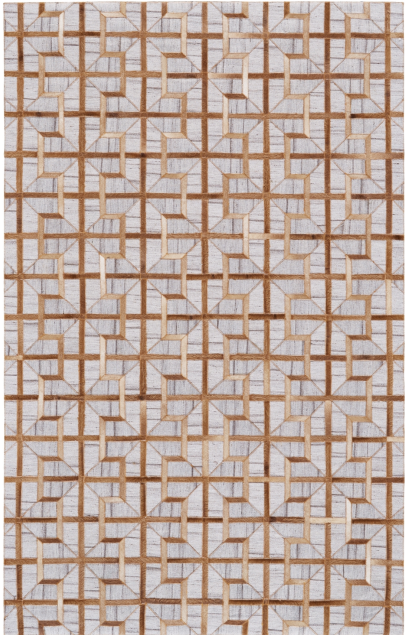
- 5' x 8'
- 8' X 11'
- 9' 6" x 13' 6"
- 2' x 3' Sample



Flat Weave



Hand Made



GRAY / ASPHALT



IVORY / SILVER



STEEL / STORM



IVORY / BURLYWOOD



ONYX / ASPHALT



SUDAN / SAND



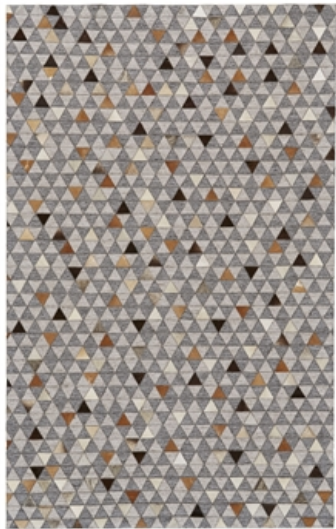
BISQUE / STORM



IVORY/SLATE



ONYX / GARGOYLE



MULTI



IVORY / BURLYWOOD



IVORY/SAND



ONYX / BURLYWOOD