

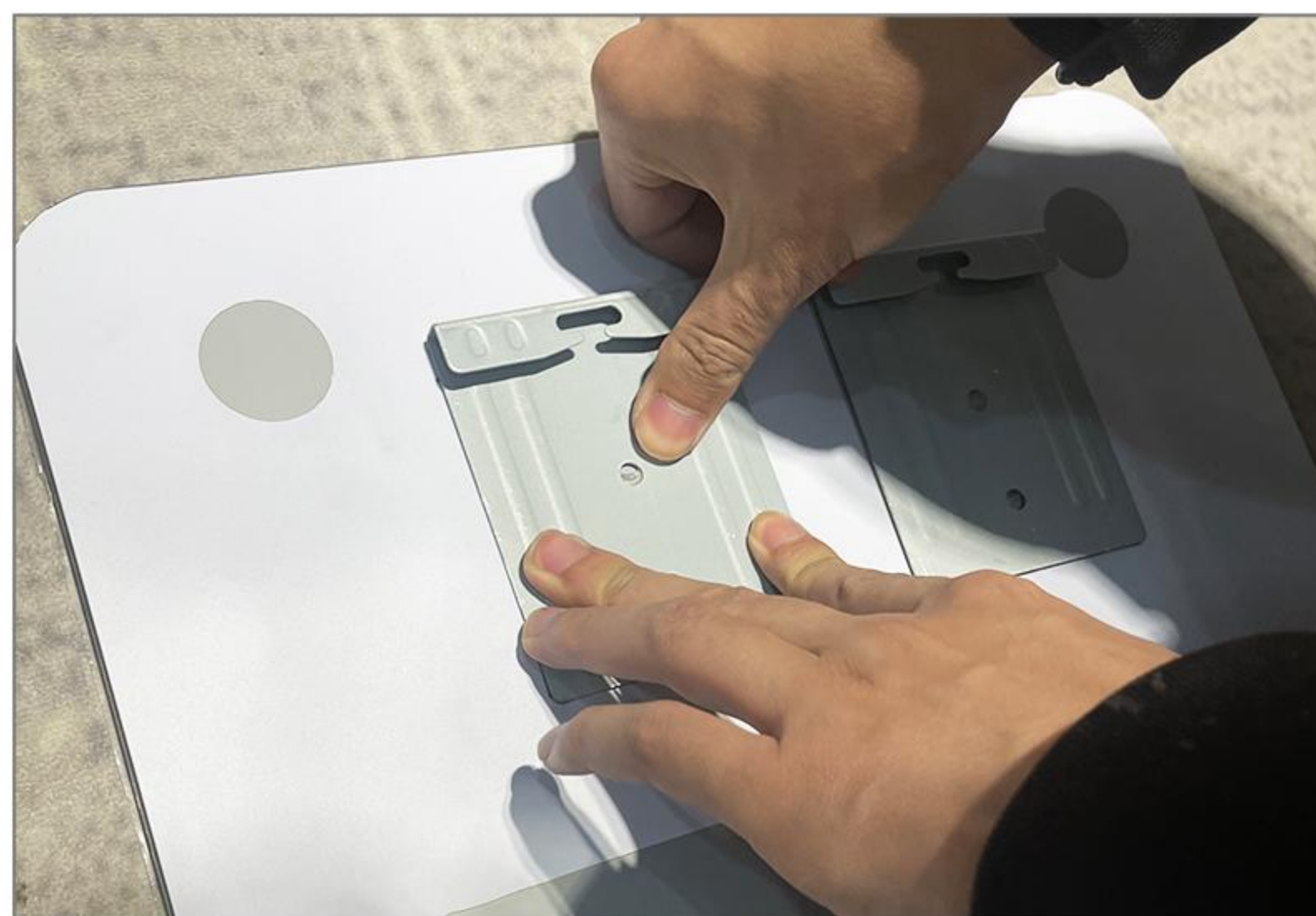
# INSTALLATION INSTRUCTIONS

## WALL HANGING (DRILLING REQUIRED) INSTALLATION PROCEDURE

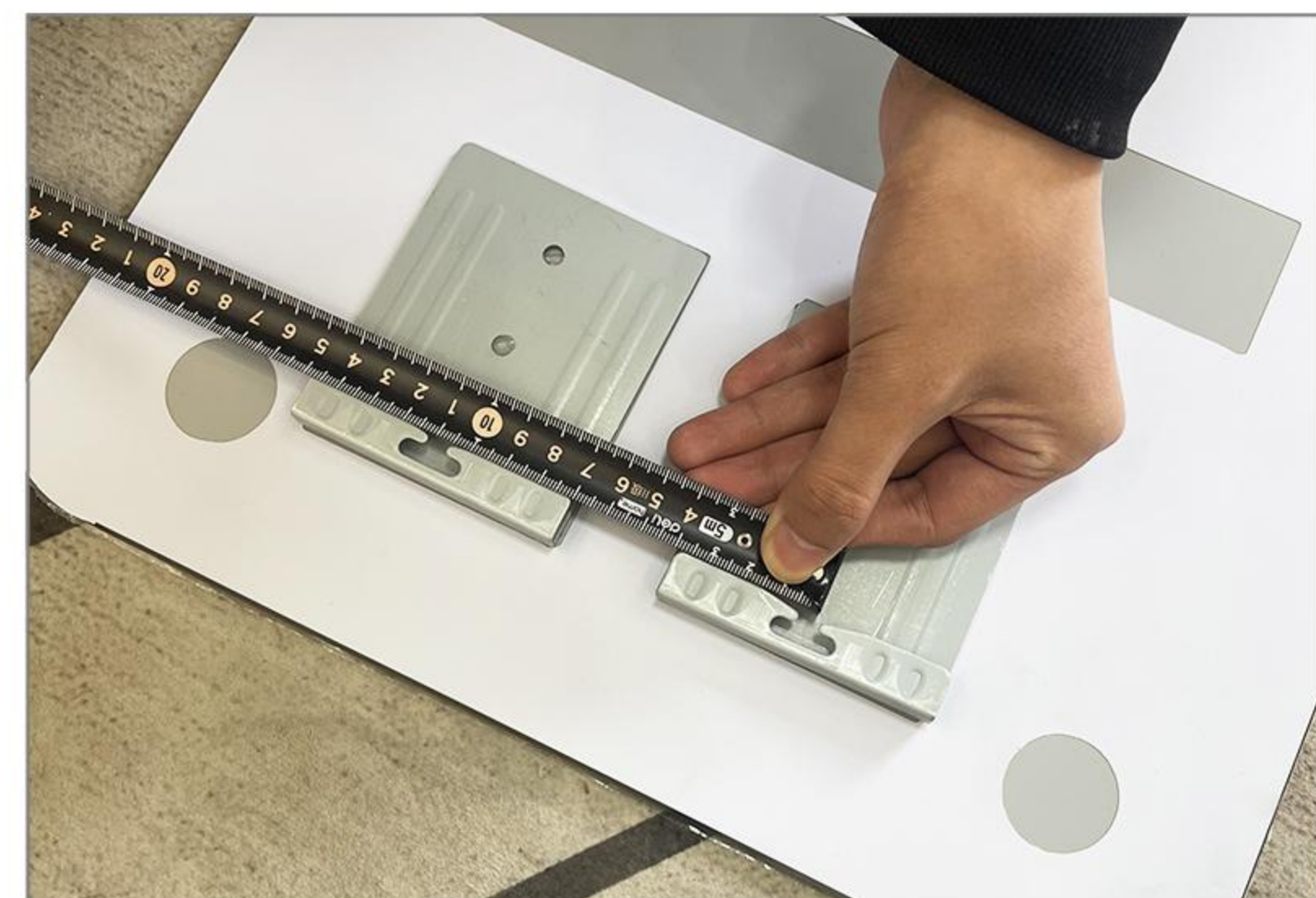
Tools Needed: Hanging Piece A\*2      Glass Glue\*1  
Screw Mounting Kit      Balance Pad\*2



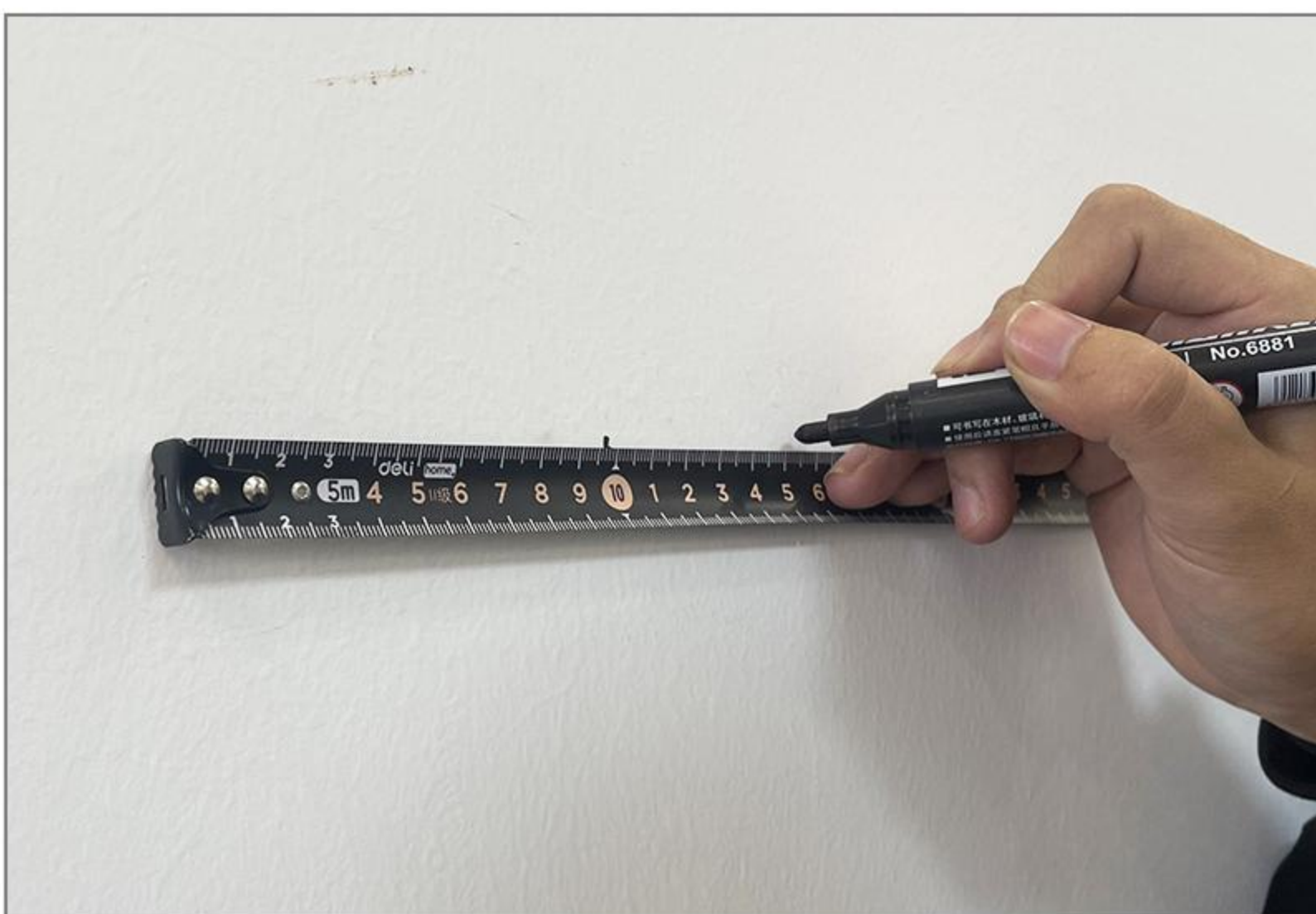
1. Squeeze an appropriate amount of glass glue on the back of 2 pieces of hanging piece A and fix them in 2 boxes above the back of the mirror.



2. Fix the hanging piece A on the position just covered with glue.  
**Note: Wait 3-5 days before proceeding to the next step. (Glue needs to set)**



3. Measure the hole distance between the hanging plate A.



4. Mark the hole spacing on the wall.



5. Drill holes with electric drill, install expansion screw tube and screw in.



6. Put the balance pad on each side below the back of the mirror, hang up the mirror.

SUITABLE  
WALL



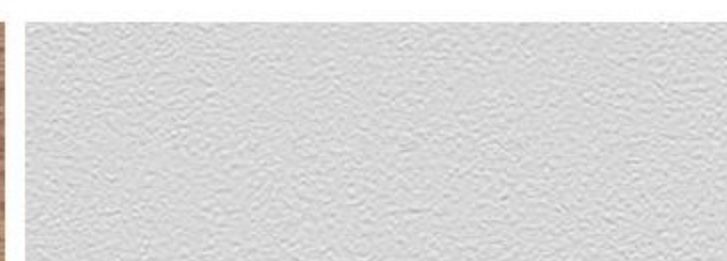
Smooth ceramic tile



Concave and convex ceramic tile



Hard wood wall



Latex paint wall



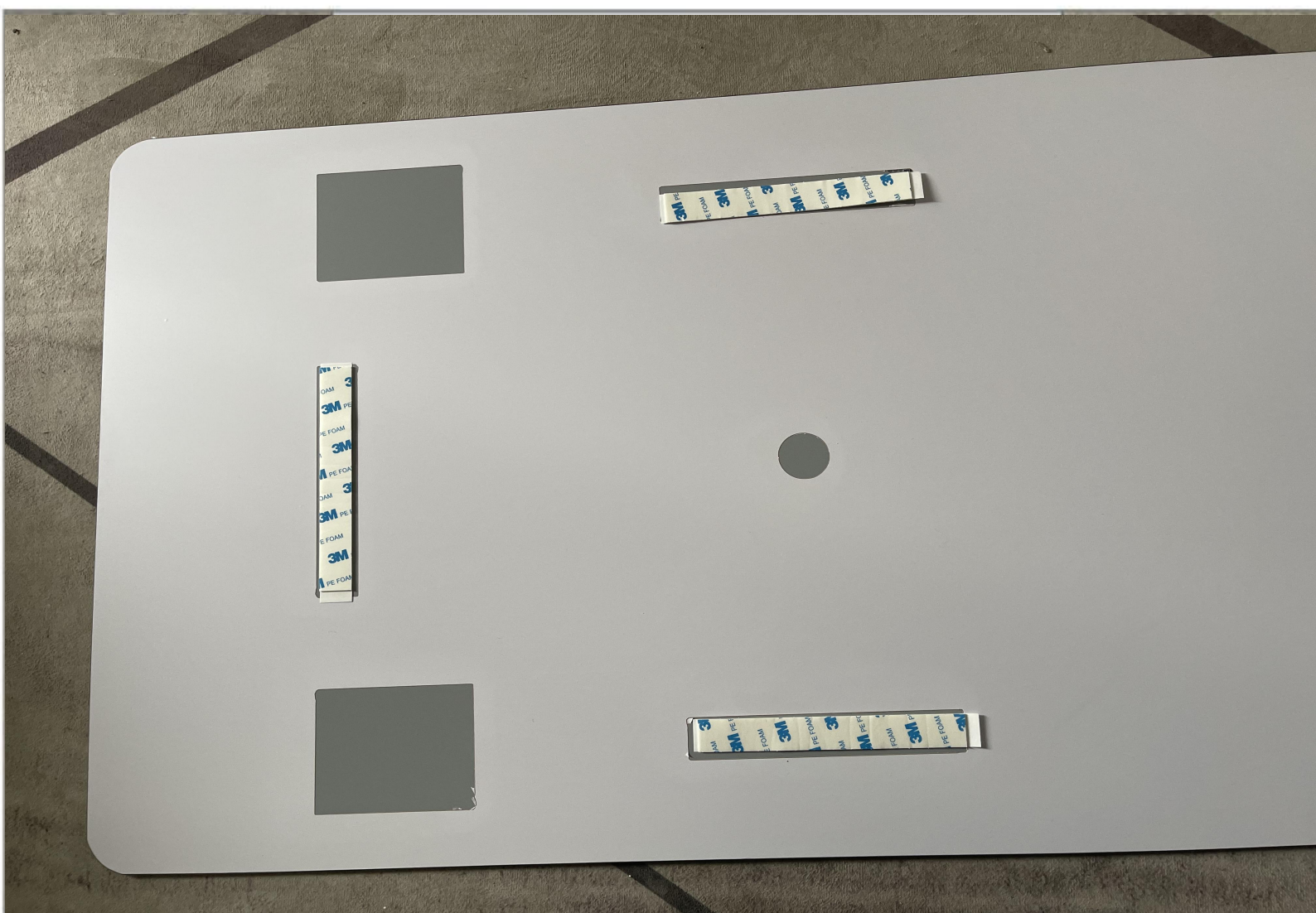
Concrete wall surface

# INSTALLATION INSTRUCTIONS

**! GLASS GLUE MUST BE USED, OTHERWISE THE MIRROR WILL FALL OFF**

## PASTE INSTALLATION PROCEDURE

Tools Needed: Glass Glue\*1 Double-sided Adhesive\* 6



1. Attach 6 pieces of double-sided tape to the positioning frame of the strip on the back of the mirror.



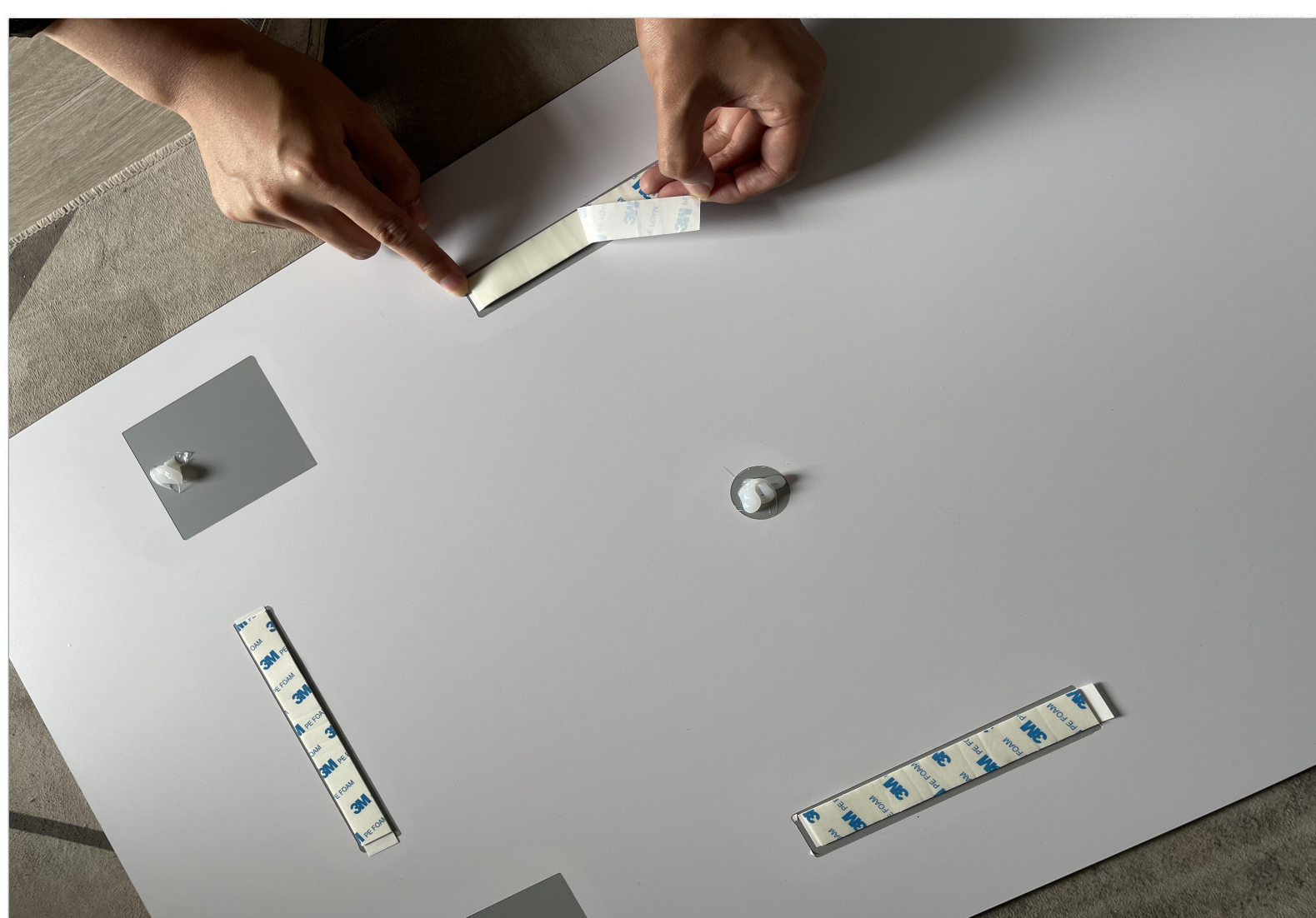
2. Open glass glue.



3. Squeeze appropriate amount of glass glue on the round anchor point, **glass tape full of dots higher than double-sided tape.**



4. As shown in the figure



5. Tear off the top layer of double-sided tape.



6. Stick the mirror on the wall.

**SUITABLE WALL**



Smooth ceramic tile



Concave and convex ceramic tile



Smooth marble



Concave and convex marble



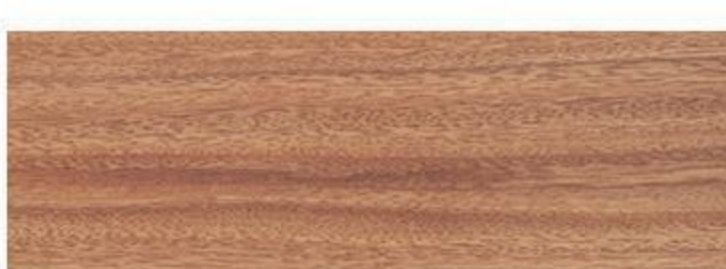
Hard glass



Smooth metal



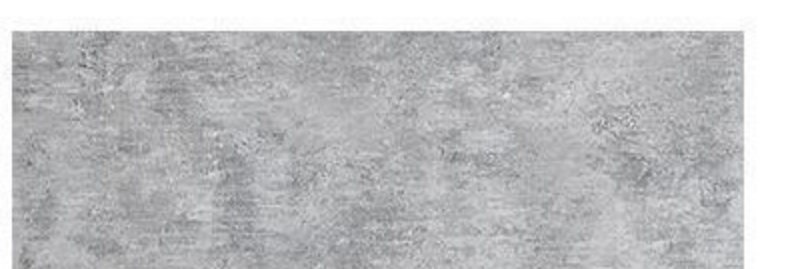
Concave and convex metal



Hard wood wall



Latex paint wall



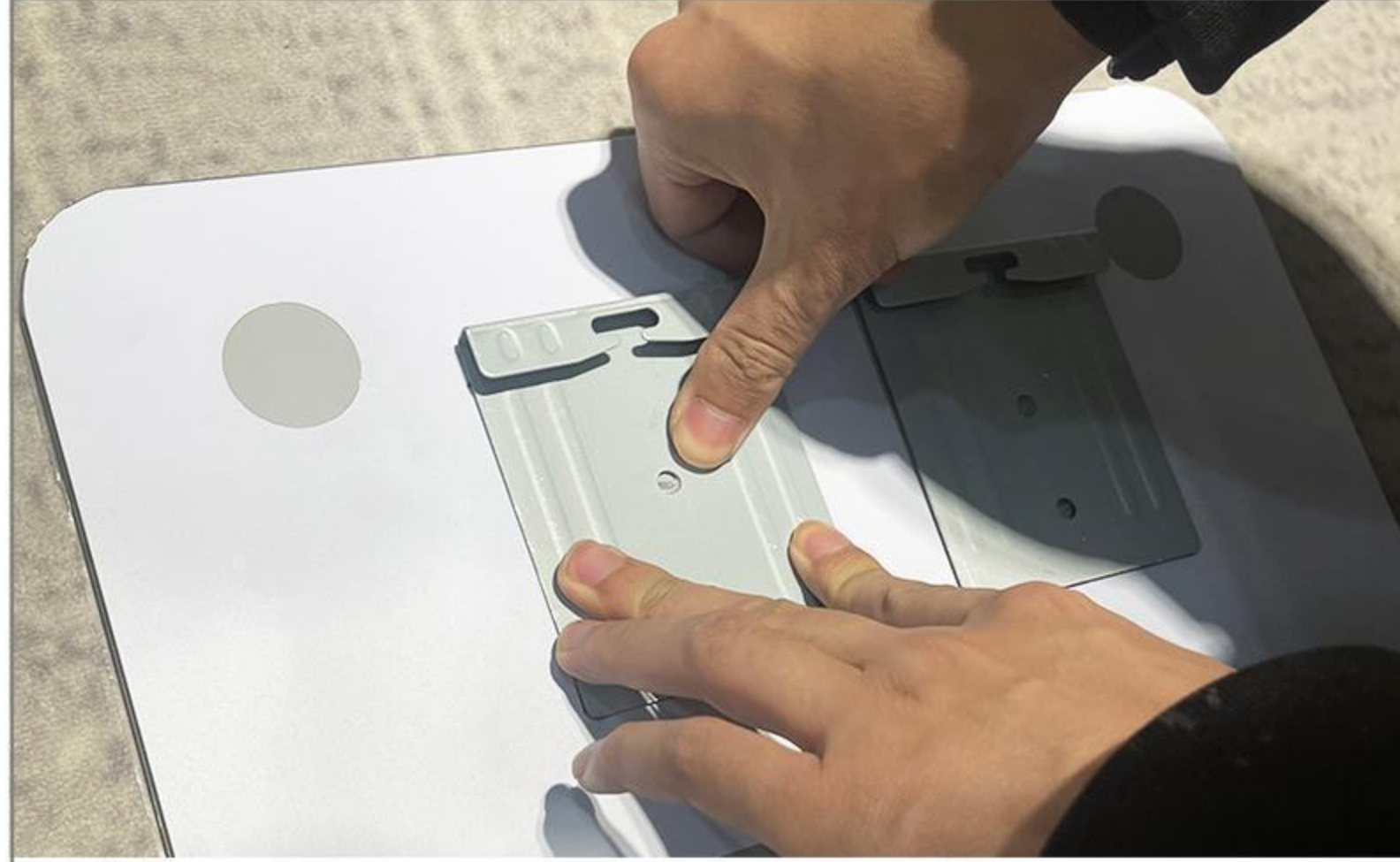
Concrete wall surface

# WALL HANGING (NO DRILLING REQUIRED) INSTALLATION PROCEDURE

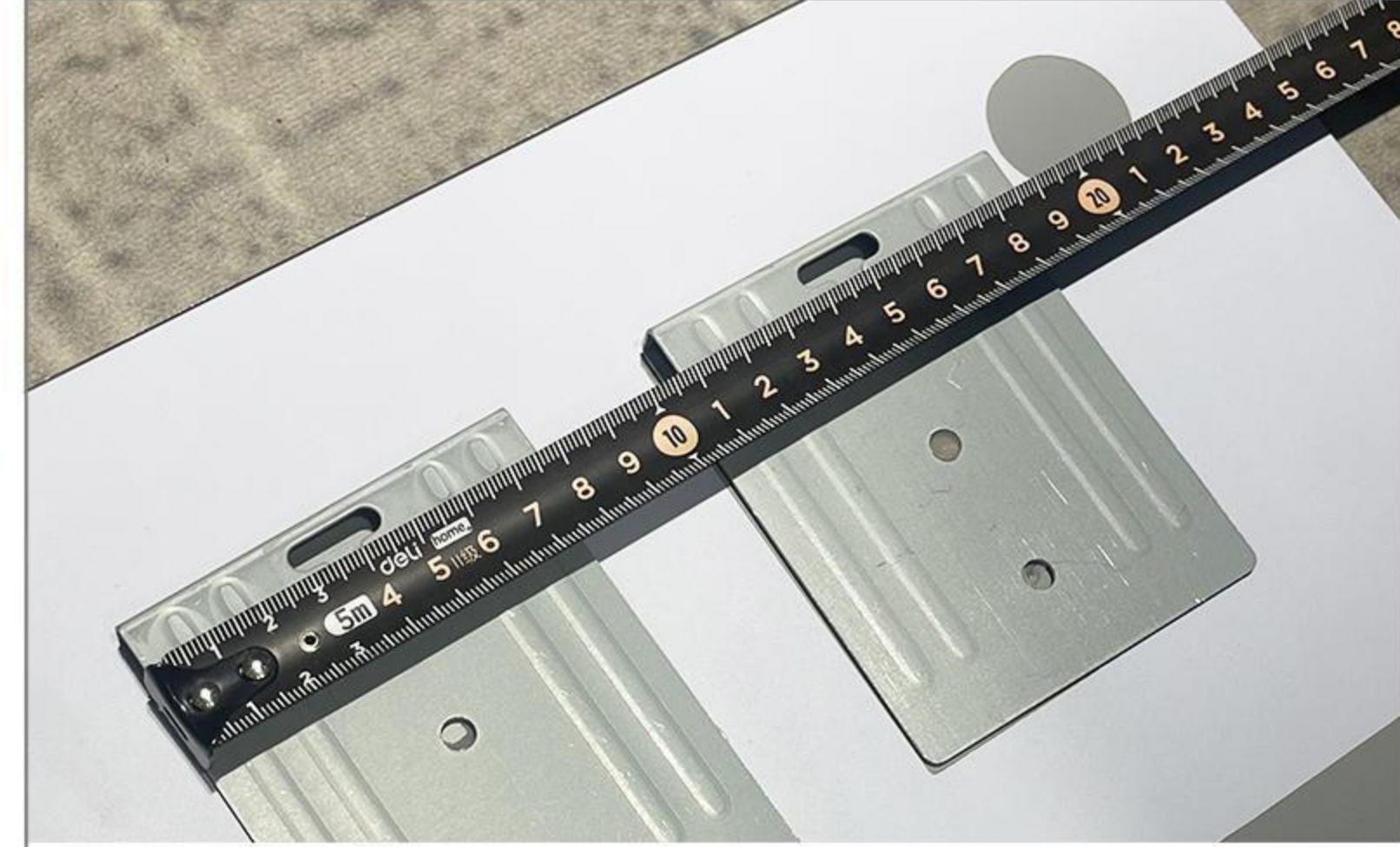
**Tools Needed:** Hanging Piece A\*2      Hanging Piece B\*2      Auxiliary Sticker\*4  
Glass Glue\*1      Balance Pad\*2      Balance Rule



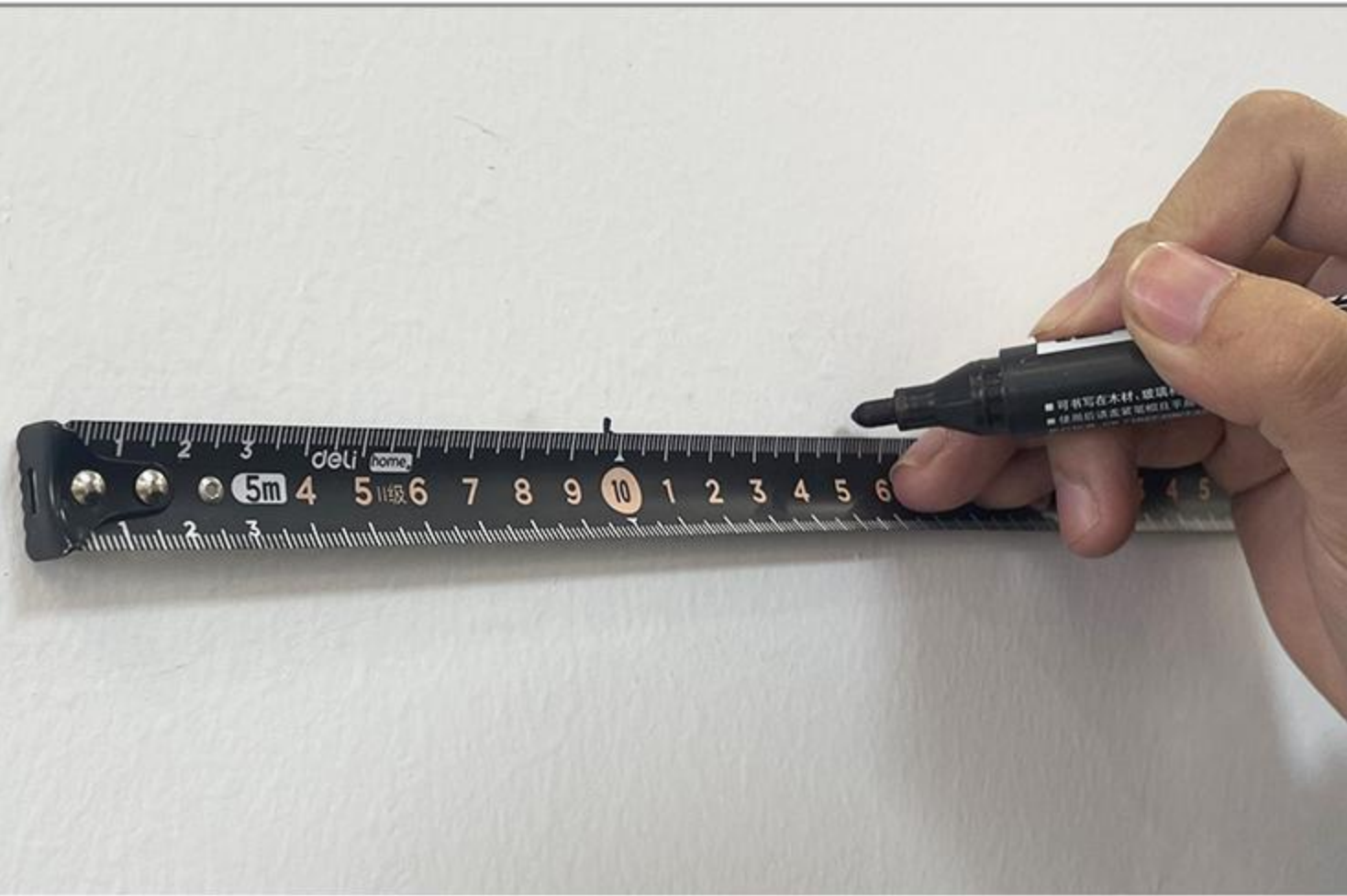
1. Squeeze an appropriate amount of glass glue on the back of 2 pieces of hanging piece A and fix them in 2 boxes above the back of the mirror.



2. Fix the hanging piece A on the position just covered with glue.



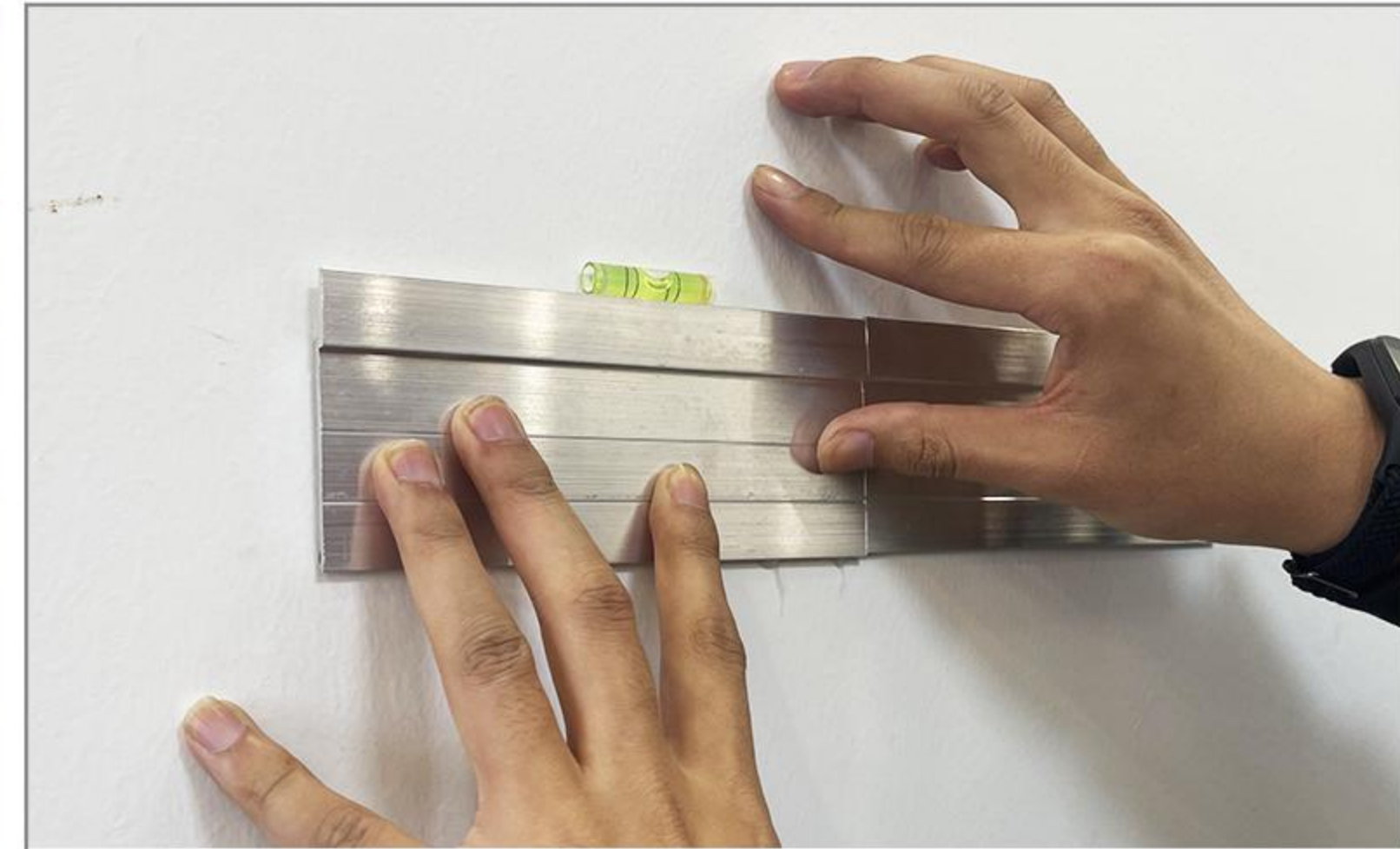
3. Measure the hole distance between the hanging plate A.



4. Mark the hole spacing on the wall.



5. Apply glass glue evenly to the two hanging pieces B.



6. Fix the hanging piece B coated with glass glue on the wall mark, use the Balance Rule to keep horizontal.



7. Attach auxiliary stickers to piece B, put the balance pad on each side below the back of the mirror.



8. **It needs to be ventilated for 3-5 days in summer and 5-7 days in winter, when the glass glue is dry, hang up the mirror.**

## SUITABLE WALL



Smooth ceramic tile



Concave and convex ceramic tile



Smooth marble



Concave and convex marble



Hard glass



Smooth metal



Concave and convex metal



Hard wood wall



Latex paint wall



Concrete wall surface